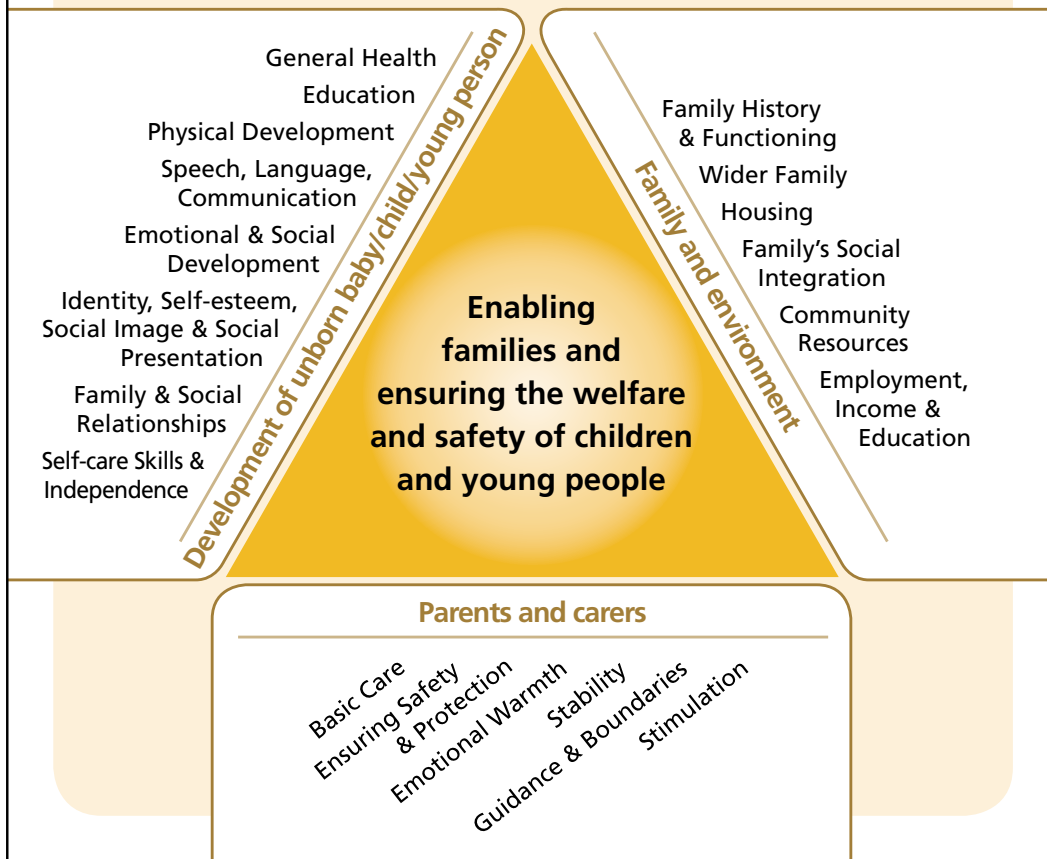


# Early Help Assessment Diagram

For use with the Early Help Assessment and Plan (EHAP)



## A good assessment is:

**Efficient** – assesses the needs of the child/young person and their family

**Balanced** – looks at strengths/positives as well as needs

**Inclusive** – reflects the views and wishes of the family

**Unbiased** – remains fair, impartial and non-judgemental

**Solution-focussed** – concentrates on appropriate and doable actions to achieve the desired results

**Authentic** – an accurate, evidence-based record of discussions

**Clear** – concise and easy to understand

If you have an EHAP related enquiry, please contact the **Family Information Service** on **020 8825 5588** (Mon-Fri, 9am to 5pm), email [EHAP@ealing.gov.uk](mailto:EHAP@ealing.gov.uk) or visit [www.ealing.gov.uk/EHAP](http://www.ealing.gov.uk/EHAP)