

# Gunnersbury Park



## HLF Parks for People

### Gunnersbury Park Stage D Landscape Design Presentation

March 2014

Gunnersbury Park  
Popes Lane  
London  
W3 8LQ

# Gunnersbury Park 2026 Masterplan

## Gunnersbury Masterplan - Showing 'Parks for People' Works and Future Development Phases

2

### KEY

#### Parks for People Project

##### Repair and Conservation Work

1. Museum frontage and drive improvements - restore the unique historic parkland setting and views.
2. Terrace Improvements - restore the historic setting of the two mansions and improve access down to the south lawns and gardens.
3. Restore the Orangery for use as an events venue.
4. Recreate the west section of the Horseshoe Pond.
5. Repair the round pond and bring back public boating activities.
6. Restore and repair the listed heritage parkland structures to remove them from the Risk Register.
7. Open up central parkland (pitch and putt course to be relocated see item 20)
8. Restore the heritage planting beds and rockeries and improve access around the south lawns.
9. Works to heritage trees and designed views across the whole park (park-wide, not shown on plan).

##### New Building Work

10. New cafe on site of existing cafe building

##### Other Physical Work

11. Improve the parks entrance areas, welcome signage and wayfinding.
12. New interpretation features and information
13. Create a community kitchen garden with learning and volunteering opportunities
14. Improved cafe landscape with 'museum collection' themed play area
15. Create a new nature trail and develop existing and new habitats to increase the wildlife value of the park.

##### Future phases of work

16. Gunnersbury House (small mansion) - commercial / community options under investigation
17. East and West Stables - commercial / community options under investigation
18. Carriage Display Building - HLF Heritage Grant application 2014 includes the new carriage display building to be connected to the new cafe.
19. Potomac Lake - community wildlife and fishing project under discussion
20. Sports facilities - community sports hub options under investigation including relocation of Pitch and putt course.
21. Infrastructure (e.g. Car park/ footpaths) - future improvements as part of planned maintenance programme (park-wide - only car park shown)
22. Walled Garden (Greenscene) - find a more suitable use for the site when lease ends in 2017
23. Walled Garden (Capel Manor)- future scope to expand Capel Manor College site.
24. Japanese Garden - future community garden project



# HLF – Parks for People Priorities

- **Parks for People Priorities**

Funding for the 'Parks for People' programme comes from the **Heritage Lottery and The Big Lottery**. The emphasis is on both heritage and the community benefits.

The 5 priorities:

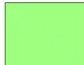


- increase the range of park visitors and audiences
- conserve and improve the heritage value of the park
- increase the range of volunteers involved in the running of the park
- increase knowledge and skills for all those involved in the park
- improve management and maintenance of the park

# Parks for People – Areas of Work

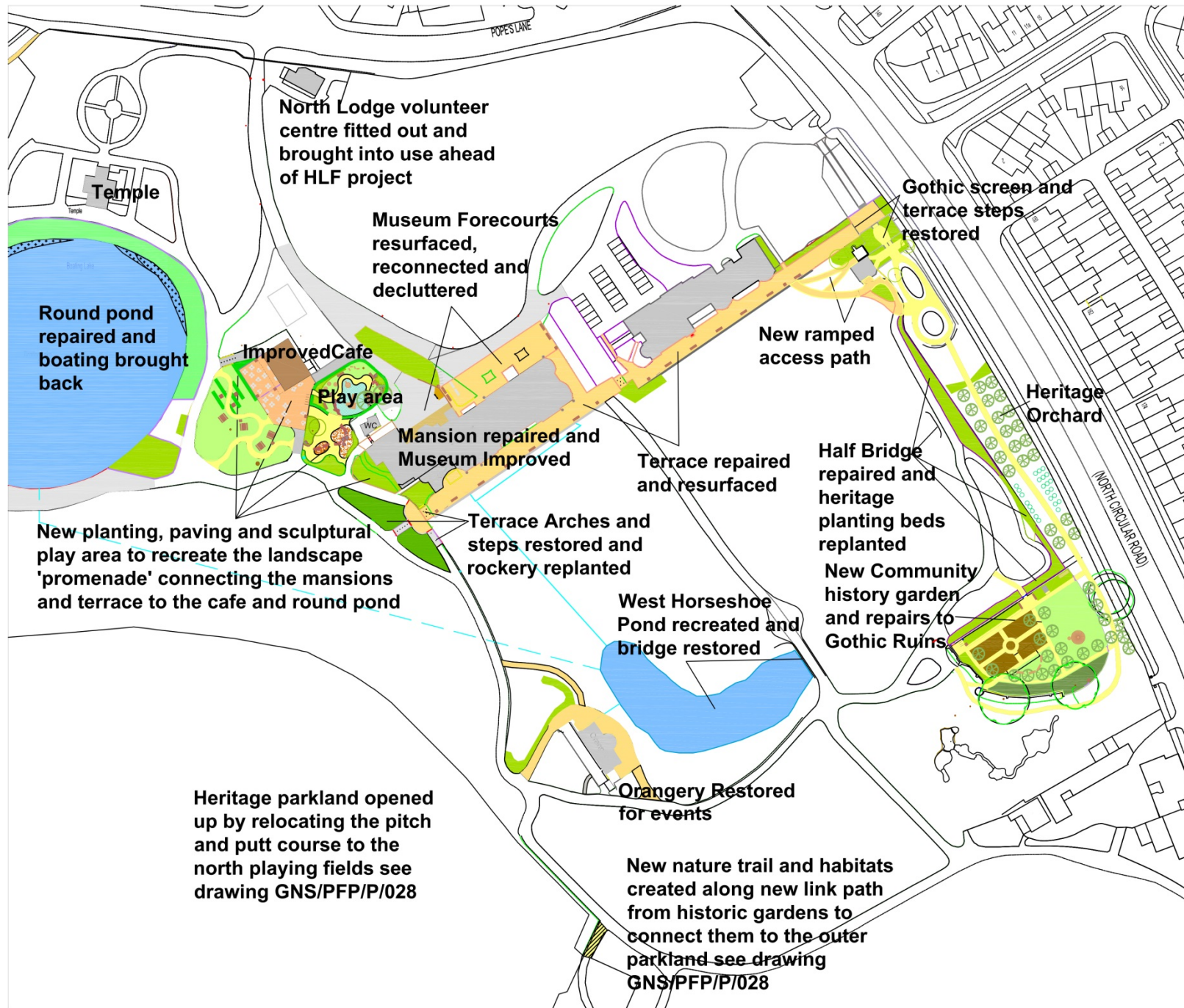


## **Gunnersbury Park** Parks for People Stage C Landscape Works

### KEY

-  Heritage Parkland Improvements: including repairs and restoration to Round Pond, parkland structures and Terrace, improvements to the museum entrance and north curtilage, new cafe landscape and play area, new community kitchen garden, heritage planting to south lawns and boating lake beds, interpretation, park furniture and signage
-  Outer Parkland Improvements - including relocation of the pitch and putt course, new nature trail and footpaths, new habitat creation, interpretation, wayfinding and park furniture
-  Entrance and node Improvements - new signage, hard and soft landscaping, park furniture and wayfinding.

# Parks for People – Heritage Core Landscape Works



- KEY**
- Heritage Building
  - Tarmac with golden gravel chip dressing
  - Tarmac resurfaced
  - Breedon Gravel paths
  - Play area safety surfacing
  - Heritage slab paving
  - Concrete slab paving
  - Heritage planting beds refurbished
  - Heritage parkland - Meadow grass
  - Refurbished rockeries
  - Mown grass
  - Community and learning gardens
  - New pipes connecting new borehole to ponds
  - Ponds
  - Existing play area refurbished
  - Existing car park



Environment & Cultural Services  
Major Projects and Development Team  
London Borough of Ealing  
Perceval House  
14 - 16 Uxbridge Road  
London W5 2HL

Project Name	Gunnersbury Park Parks for People - Stage D landscape
Drawing Name	Heritage Core Area Works
Project Leader	JEA
Drawn by	JEA
Checked by	-
Date	JAN_14
Scale	1/1250@A3
Drawing Number	GNS/PFP/P/029
Revision	-

# Parks for People - Heritage and Conservation

- Improve and restore the heritage setting for the two mansions by resurfacing the terrace and museum forecourt, repairing the arches and balustrades.
- Repair and extend the Orangery for events use
- Recreate the West Horseshoe Pond as the historic setting for the Orangery and repair the two 'bridges'
- Repair the Round Pond and bring back boating
- Repairs to the historic parkland structures and follies
- Replant and restore the Victorian borders, rockeries and shrub beds around the south lawns
- Carry out heritage tree management and restoration of 'designed' views



# Parks for People – Ponds past, present and future

- Repair the Round Pond, install new pumps and pipework and bring back boating.
- Recreate the west half of the Horseshoe Pond to re-establish the historic setting for the Orangery
- Restore the parkwide pipe network to reconnect the Round Pond and Horseshoe Pond to the Potomac Lake

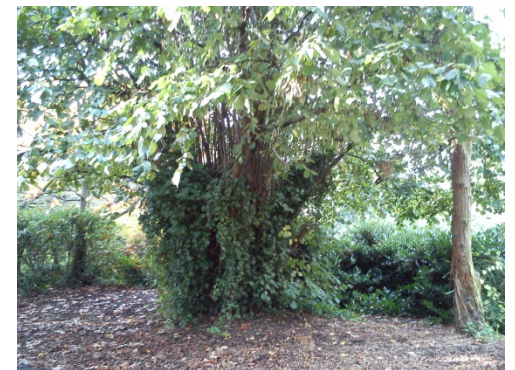


# Parks for People – Heritage Trees

- Maintain and celebrate the parks 2500+ magnificent trees.
- Carry out specialist tree condition surveys, management and research to identify and protect our heritage trees.
- Set up tree trails, interpretation and events to allow visitors to discover our amazing trees.



Tree Map Key – pink: 1800-1835, green: 1835-1889, orange: 1889-1925, blue: 1925-present



# Parks for People – Heritage Views

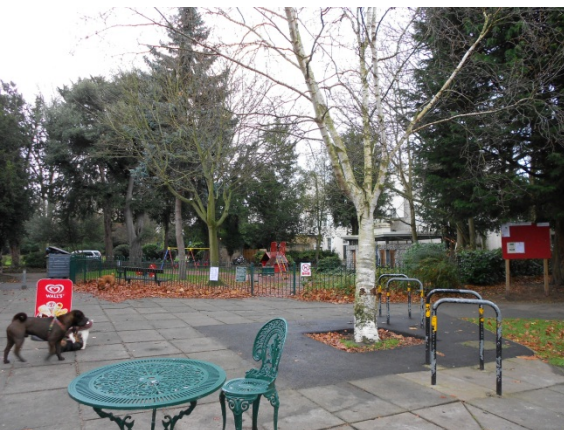
Restore, interpret and manage the designed views including:

- Views from the terrace across the south lawns
- Views of the Orangery and Horseshoe Lake
- Views of the large Mansion from the main gate
- Views from the terrace western viewpoint across the central parkland



# Parks for People – Café Area

- Build a new café to replace the existing worn out building and link it with a new building to display the Rothschild Carriages
- New café terrace and landscaping, and replace the old toddler play area with a new ‘museum collections’ themed accessible play area



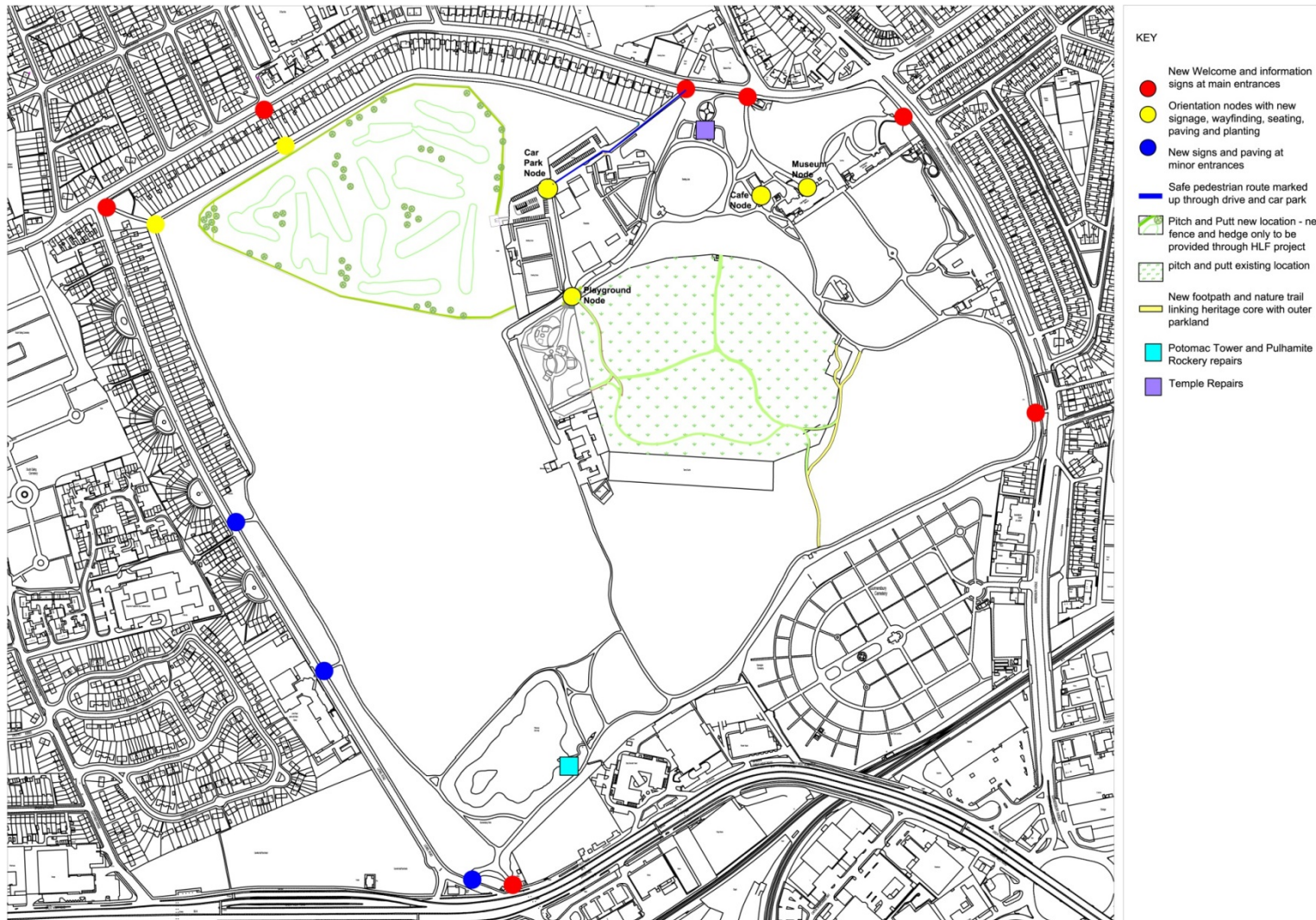
# Parks for People – Community Garden

Develop our community history garden in the east walled garden, including a 'plants and gardens' timeline, Victorian kitchen garden beds, skills and learning activities and volunteers plots



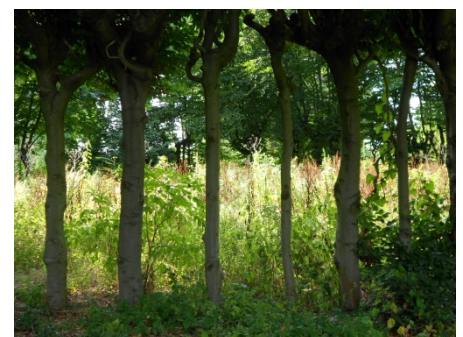
# Parks for People – Central Parkland Works

- Open up the central heritage parkland as long-grass meadow by relocating the pitch and putt golf course to the playing fields
- Create a nature trail with new habitats to increase biodiversity and reconnect the inner and outer park



# Parks for People – Activities

- Return family boating activities to the newly repaired Round Pond
- Interpret the unique heritage and landscape of Gunnersbury park through a wide range of media including new sculptural interpretation hub features, park collection 'labels' and a range of 'portable' media trails
- Run a range of learning, volunteering and training activities linked to existing and new features in the park
- Develop a range of nature trail activities and resource packs



# Parks for People – Infrastructure and Information

- New footpath links to open up and reconnect the inner and outer parkland
- Improve disabled access to the south lawns by installing a new ramped path from the terrace down to the Bathhouse and improving the footpaths around the south lawns.
- New signage and interpretation throughout the park to tell the stories of the Gunnersbury Park estate and its people
- Welcoming and informative park entrances and improved way-finding
- Employ dedicated project staff for park development, management, outreach and education
- Develop the park stakeholder and volunteer groups and provide training to empower them to help run the park



# 10 Year Park Maintenance and Management Plan

A Park Maintenance and Management Plan has been developed recommends the following key actions to ensure that the park will be maintained and sustained in the future

- Develop the park master plan of phased works to restore, maintain and manage Gunnersbury Park as a nationally important heritage park and a vibrant community hub offering a wide range of park activities and attractions.
- Set up a strong, grounds maintenance team of site-based staff, with the skills and resources to develop and run an excellent park.
- The HLF project will re-establish a dedicated Park Manager role based in the park, working directly with the grounds staff to ensure high quality maintenance is delivered and the park is managed effectively. The park will also have dedicated park education and outreach officers and three park apprentices.
- Provide a range of ways for local people to get involved in managing and looking after the park, including a Park Stakeholder Forum, community and volunteer activities, and skills and learning opportunities linked with Capel Manor College.



# Further Planning Information Available

These proposals are detailed in RIBA stage D drawings GNS/PfP/P/001-029 and hydrology drawings 4753/00/01-06, and further information is also available in the following supporting documents:

- Conservation Management Plan
- Heritage Impact Assessments
- Statements of Significance
- Hydrological Restoration Report
- Archaeological Investigation Report
- Heritage Tree survey
- Ecology Report
- Bat Emergence Survey Report
- Pedestrian and Vehicular Movement Survey Report
- Travel Plan
- Public Consultation reports