

Gunnersbury Park 2026



Public Consultation 23 November 2013

Bridget Gregory – Project Manager

Gunnersbury Park
Popes Lane
London W3 8LQ

Public Consultation Programme

2.00 Welcome and introduction to Gunnersbury 2026 - Bridget Gregory, Project Manager

2.10 Museum Project - Rita McLean, Invigour

2.30 Parks for People Project – Jan Anderson, Landscape Architect, Ealing Council

2.50 Activities in Museum and Park – Florence Andrews, Senior Outreach Officer, Ealing Council

3.00 Summarise and explain next steps

3.05 Questions

3.30 Team on hand to provide further information and answer questions

Phasing of Masterplan

	Phase1	Phase 2	Phase 3
Buildings	Repair, Restore and conserve of Large Mansion Development of the Museum	Repair of other listed structures including Temple, lodges and walls and developing. Options for Small mansion and Stables	Remaining Structures Sports
Landscape	Restore Priority Heritage Parkland inc Orangery plus other key park features including boating lake, signage and interpretation	Refurbishment of 'desirable' parkland assets Including Potomac Lake and Japanese Garden	'Other' Parkland projects including Walled garden / Capel Manor, woodland biodiversity
Timescale	2011– 2018 development	2015-2019 2019 start on site	2019 – 2023 2023 start on site
Cost	£22m	£15m	£14.25m
Potential Funding Sources	Heritage Lottery Fund Ealing and Hounslow Council Trusts and Foundations S106/CIL	English Heritage Trusts and Grants	HLF Sporting organisations Trust and Grants

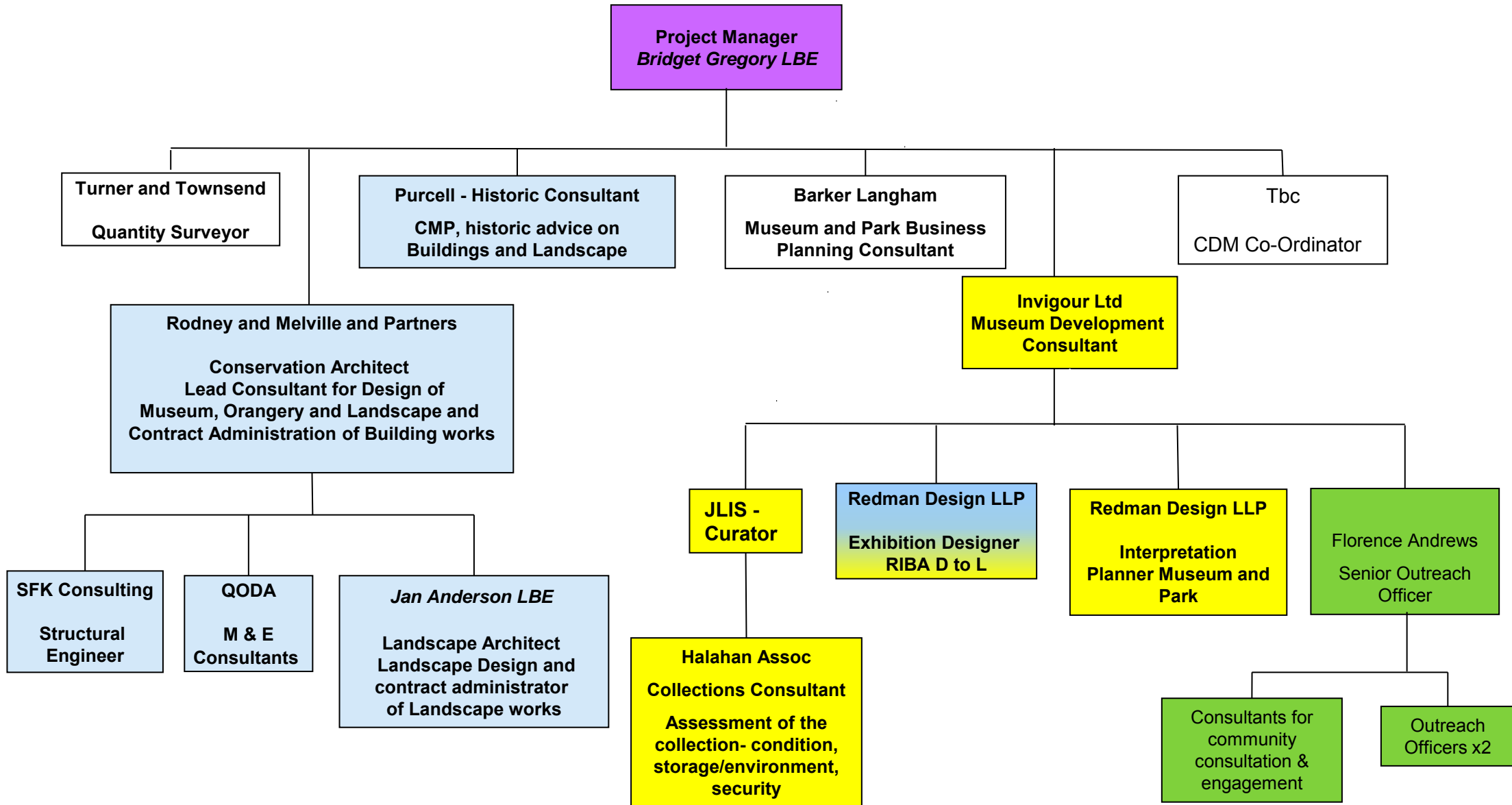
The Vision

Gunnersbury Park and Museum will be a vibrant, creative, community hub and a leading visitor destination: a place of enjoyment, discovery, and learning.

Engaging local, national and international audiences through its historic house and park land, extensive museum collections and inspiring programmes of events and activities.



Gunnersbury Park Multi Disciplinary Team Organogram



Commitment of Hounslow and Ealing Councils

- Financial commitment from both councils totalling nearly £10m
- Ongoing annual revenue commitment of over £ 700,000pa
- Project Champions :Leader of Ealing Council and Deputy Leader of Hounslow Council, both on Project Board
- Gunnersbury Park Joint Advisory Panel with 3 Councillors from each Borough meeting regularly to discuss the project
- Investing in business planning, including catering and retail expertise to ensure future sustainability
- Looking at future governance models to ensure the vision is achieved and the park and museum remain a vibrant, creative hub and leading visitor destination in years to come.

Programme – Key Dates

Round One Submission

- Parks for People – 28 February 2014
- Heritage Grant – 11 April 2014

Round Two Start

- Parks for People - Decision date June 2014, Start September 2014
- Heritage Grant – Decision date 22 July 2014, Start September 2014

Project End Date

- Parks for People – summer 2017
- Heritage Grant - spring 2018

Costs of the Project – current estimated

- Heritage Grant - £13.2m
- Parks for People - £8.6m

Funding Strategy

- Ealing and Hounslow Council
- Heritage Lottery Fund
- Fundraising from trusts, foundations and other organisations

Gunnersbury Park 2026



Museum Development Proposals

Public Consultation: November 2013

Gunnersbury Park
Popes Lane
London W3 8LQ

Vision & Mission

Gunnersbury Park Museum

“Gunnersbury Park Museum will be a vibrant, creative community hub and a leading visitor destination: a place of enjoyment, discovery, and learning. It will engage local, national and international audiences through its historic house and park land, extensive museum collections and inspiring programme of events and activities.”

“The mission of GPM is to collect, care for and record the multicultural and diverse heritage of the London Boroughs of Ealing and Hounslow and make it accessible to all.”

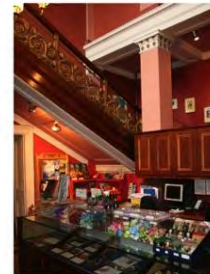
Museum Development Project Objectives

- Refurbish house, raise visibility, make welcoming, open the shutters, connect with park and park users
- Create vibrant museum - new interpretation & displays, local & global stories, more collections on show
- More & more diverse visitors, family friendly, learning opportunities, improved access
- Museum collections – better conditions for care and management
- Organisational change - governance, management, staffing, partnerships
- Sustainability

Proposals - Gunnersbury Park House

REPAIR & REDEVELOPMENT WORK

- Conservation Management Plans (historic buildings, historic landscape/park & museum collections)
- Repair of the Historic Fabric
- Establishment of new Museum Display & Exhibitions Spaces
- Creation of Heritage Function Rooms
- Increased Education Facilities
- Improved Staff & Volunteer's Accommodation
- Improved Accessibility



Repair and Conservation



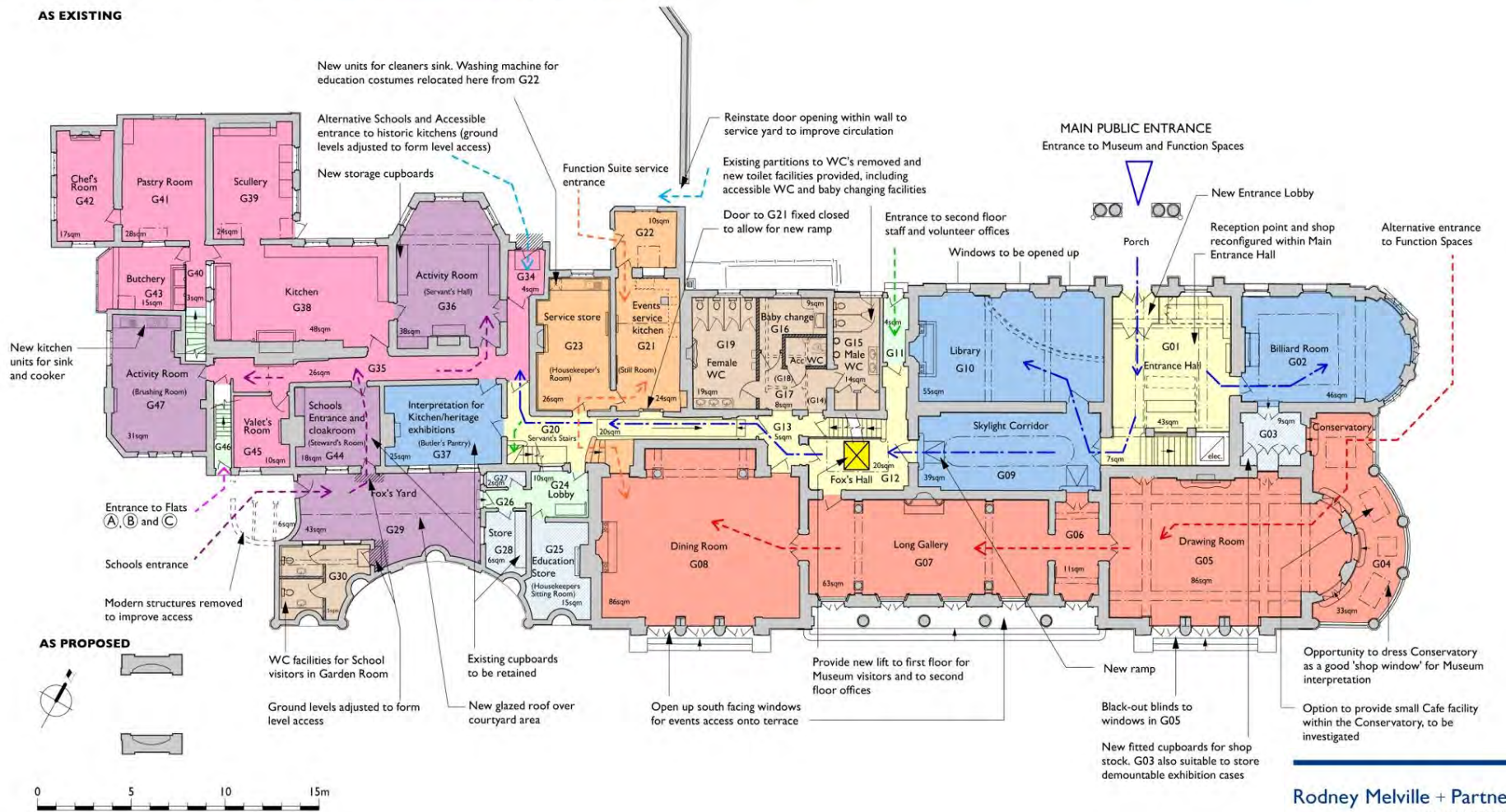
Ground Floor Plan



KEY:

- Heritage Room/Function Spaces
- Exhibition Spaces
- Heritage Exhibition Spaces (intended to allow interpretation of historic function)
- Education and 'Activity' Rooms (multi-purpose spaces)
- Service Spaces - Kitchen and storage for functions
- Proposed Lift
- WC facilities
- Storage
- Public Circulation Space
- Staff and Residential Circulation Space
- New Partitions
- Structure Removed
- Primary Public Route
- Secondary Public Route
- Supplementary Events Access
- Event Service Route
- Schools Visitor Circulation Route
- Staff Access
- Residential Access

AS EXISTING

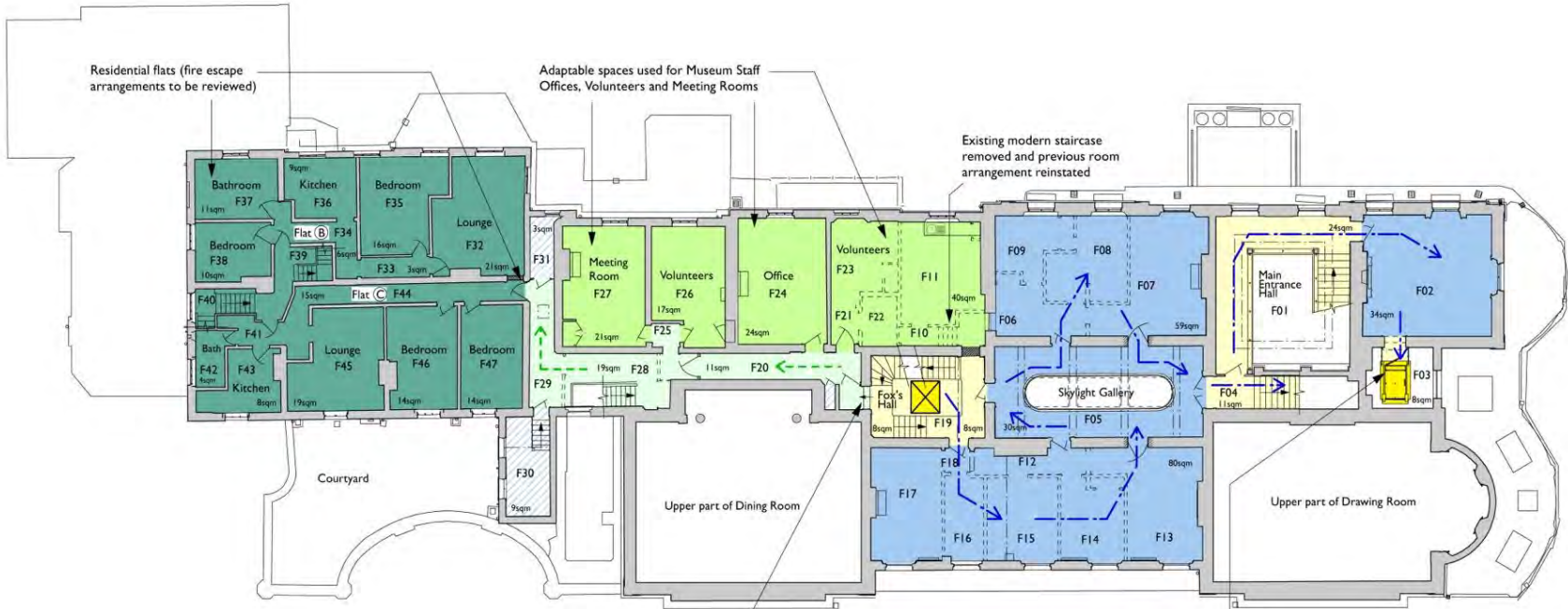


First Floor Plan



AS EXISTING

- KEY:**
- Exhibition Spaces
 - Offices/Meeting Rooms for Museum Staff and Volunteers
 - Public Circulation Space
 - Staff Circulation Space
 - Residential Circulation Space
 - Proposed Lift
 - Storage
 - New Partitions
 - Structure Removed
 - Primary Public Route
 - Staff Access



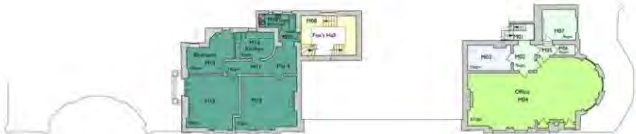
AS PROPOSED



Mezzanine Floor Plan

KEY:

- Exhibition Spaces
- Offices/Meeting Rooms for Museum Staff and Volunteers
- Storage
- WC facilities
- Public Circulation Space
- Staff Circulation Space
- Residential
- Education and 'Activity' Rooms
- Primary Public Route
- New Partitions
- Structure Removed
- Proposed Lift



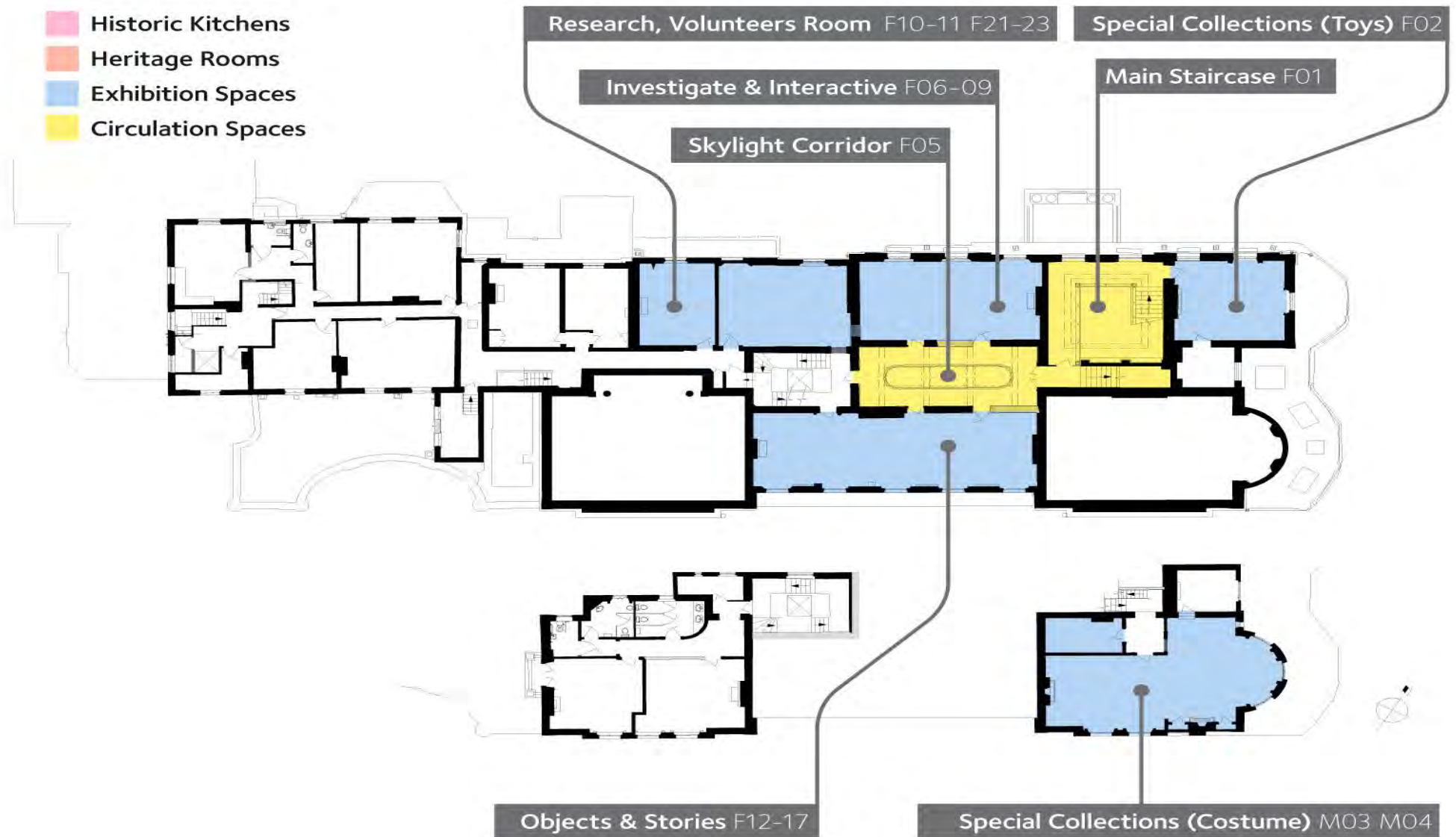
AS PROPOSED



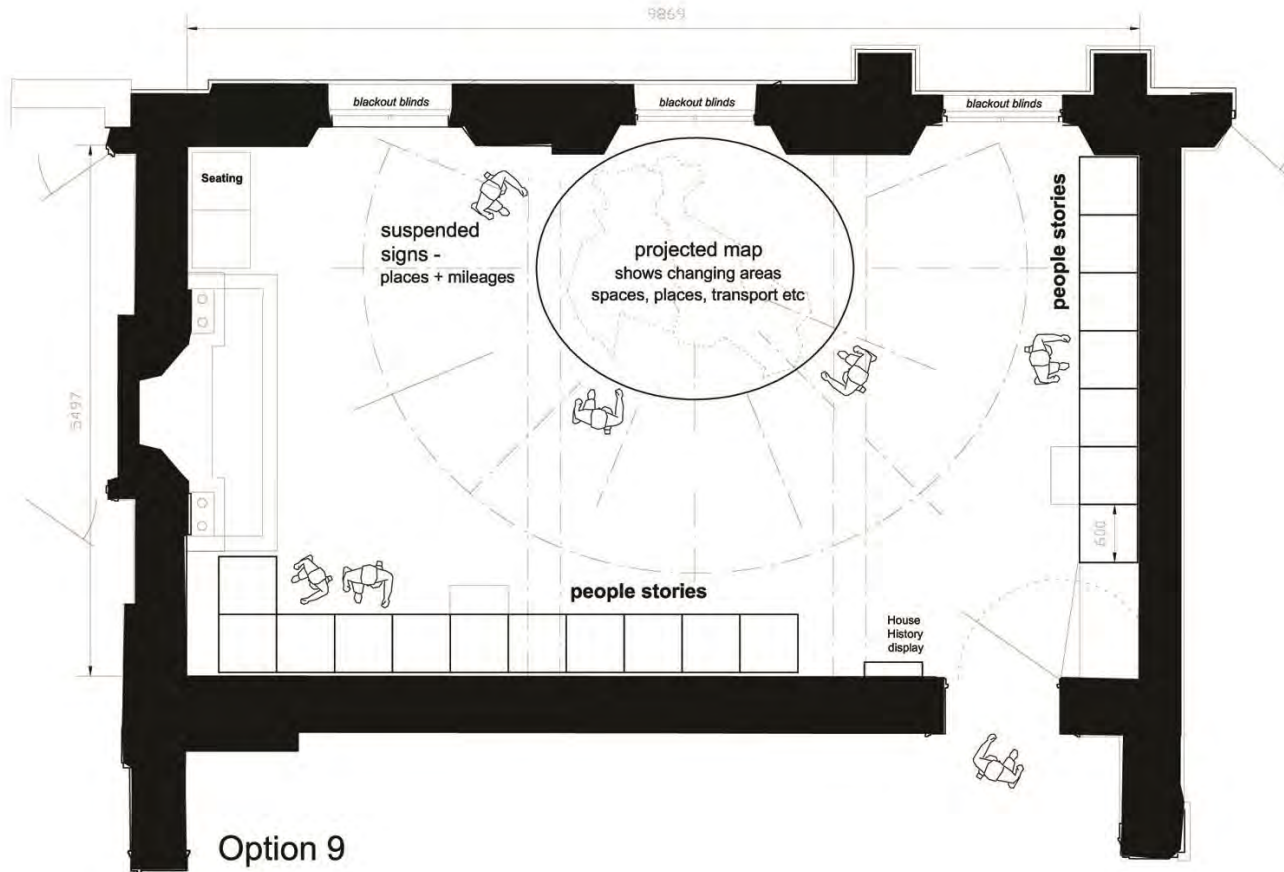
Proposed Museum Display Areas



Proposed Museum Display Areas



Work in Progress



Option 9

Rev	Date	Notes	By

REDMAN DESIGN

48, The Grove
 Ilkley
 West Yorkshire
 LS29 9EE
 Tel 01943 816898
 Fax 01943 816173

Project
 Gunnersbury Park Museum

Ground Floor

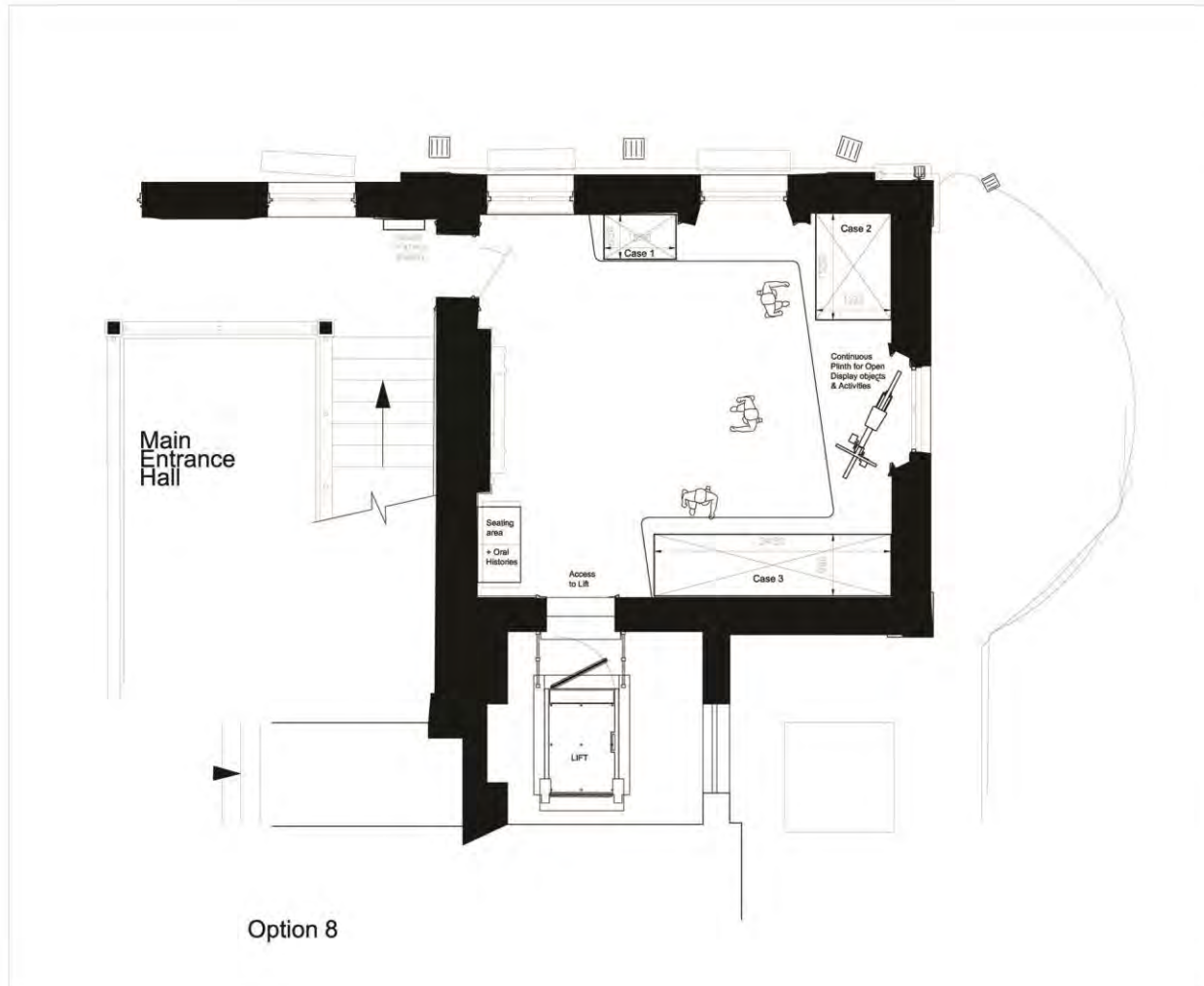
Drawing
 G10 Local History Overview

Option 9

Dwg. No.	Date	Revision
13.371.GF.LH.SK05	Nov 2013	
Drawn by.	Scale	
JMJ	1:50 @ A3	

All dimensions to be checked on site by contractor
 Copyright REDMAN DESIGN LLP 2013

Work in Progress



Rev	Date	Notes	By

**REDMAN
DESIGN**

48, The Grove
Ilkley
West Yorkshire
LS29 5EE
Tel 01943 818998
Fax 01943 819173

Project: Gunnersbury Park Museum

First Floor

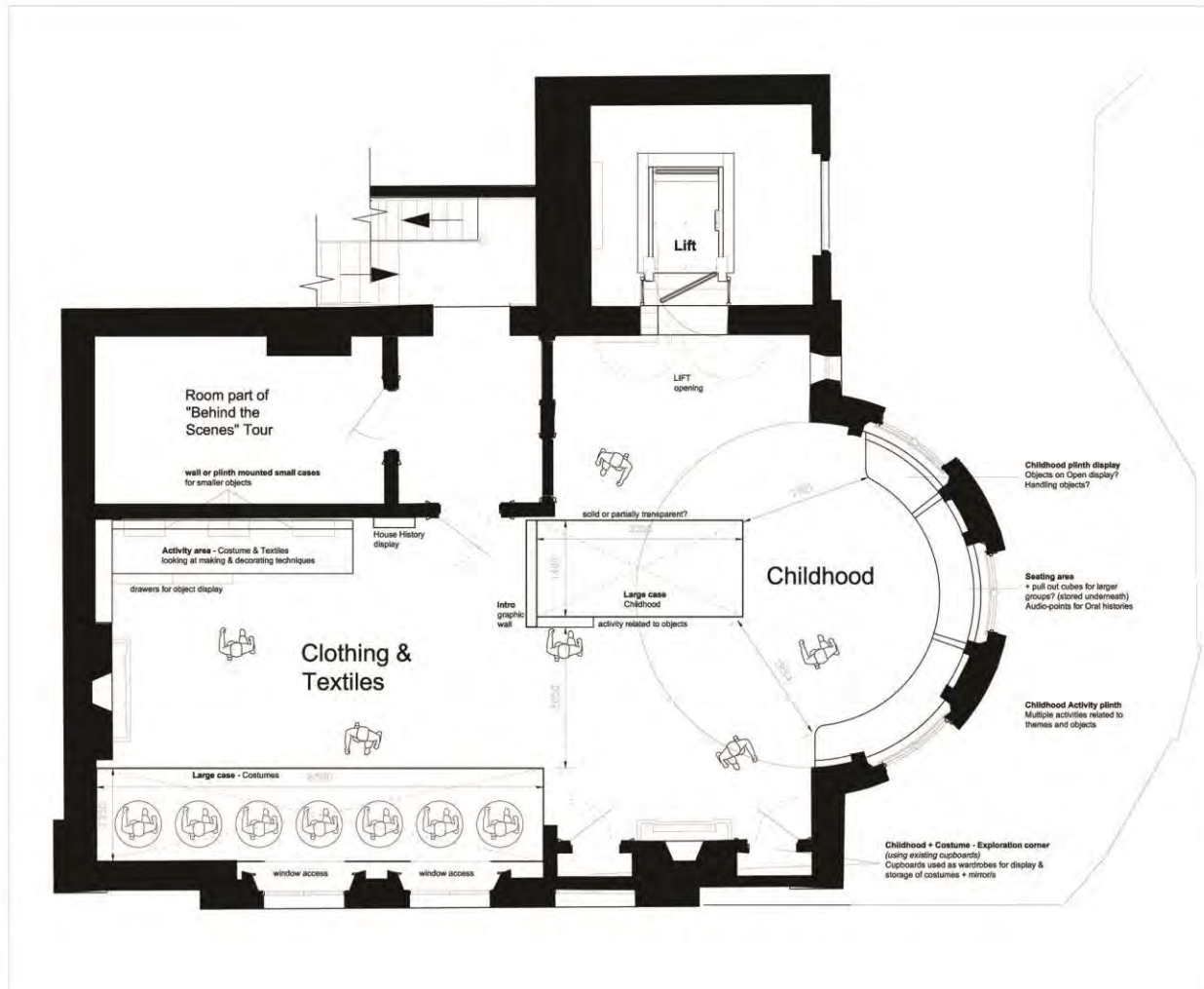
Drawing: F02 - Special Collections 1

Option 8

Dwg No.	Date	Revision
13.371.FP.SCI.SR06	Nov 2013	
Drawn by:	Scale	
JMJ	1:50 @ A3	

All dimensions to be checked on site by contractor
Copyright REDMAN DESIGN LLP 2013

Work in Progress



Rev	Date	Notes	By

REDMAN DESIGN

48, The Grove
Ilkley
West Yorkshire
LS29 8EE
Tel 01943 816998
Fax 01943 816173

Project: Gunnersbury Park Museum

First Floor Mezzanine

Drawing: M04 Special Collections 2

Initial Layout

Dwg No.	Date	Revision
13.371.MF.SC2.01	Nov 2013	
Drawn by:	Scale	
JMJ	1:50 @ A3	

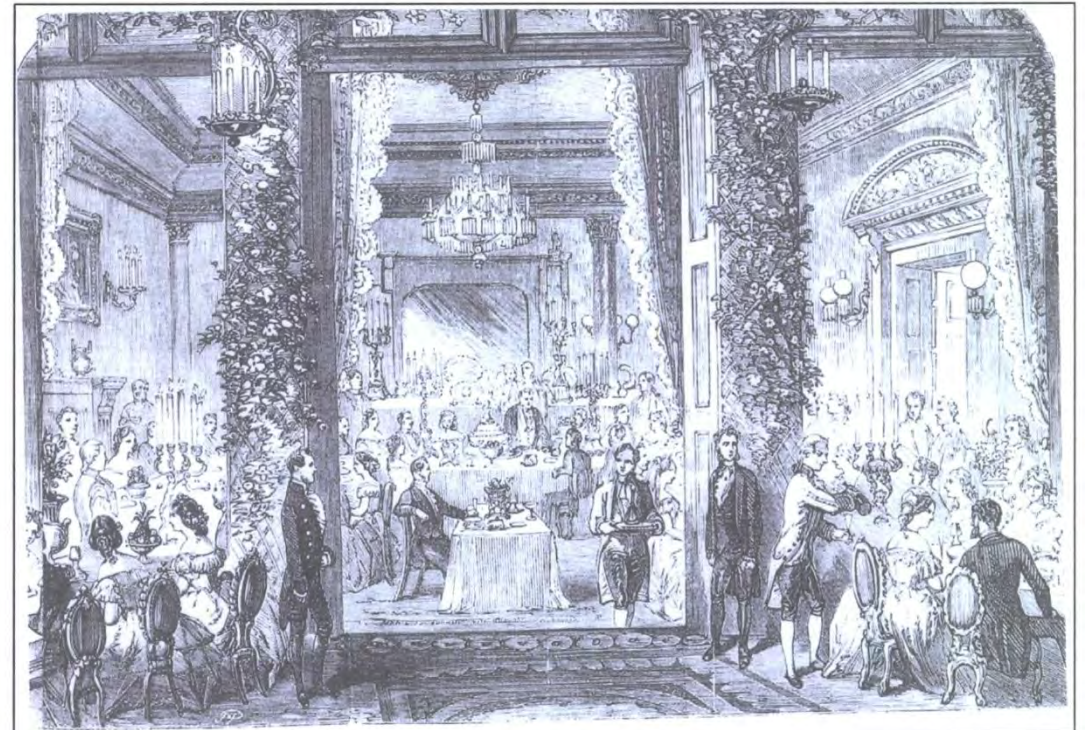
All dimensions to be checked on site by contractor
Copyright REDMAN DESIGN LLP 2013



Historic Rooms and Function Spaces



Historic Rooms & Function Spaces



Historic Service Rooms



Gunnersbury Servants



Collections in Store



Gunnersbury Park



HLF Parks for People

Gunnersbury Park

November 2013

Gunnersbury Park
Popes Lane
London
W3 8LQ

HLF – Parks for People Priorities

- **Parks for People Priorities**

Funding for the 'Parks for People' programme comes from the **Heritage Lottery and The Big Lottery**. The emphasis is on both heritage and the community benefits.

The 5 priorities:

- increase the range of park visitors and audiences
- conserve and improve the heritage value of the park
- increase the range of volunteers involved in the running of the park
- increase knowledge and skills for all those involved in the park
- improve management and maintenance of the park

Parks for People – Areas of Work



Gunnersbury Park Parks for People Stage C Landscape Works

KEY

-  Heritage Parkland Improvements: including repairs and restoration to Round Pond, parkland structures and Terrace, improvements to the museum entrance and north curtilage, new cafe landscape and play area, new community kitchen garden, heritage planting to south lawns and boating lake beds, interpretation, park furniture and signage
-  Outer Parkland Improvements - including relocation of the pitch and putt course, new nature trail and footpaths, new habitat creation, interpretation, wayfinding and park furniture
-  Entrance and node Improvements - new signage, hard and soft landscaping, park furniture and wayfinding.

Parks for People – Heritage Core Landscape Works



Parks for People - Heritage and Conservation

- Restore the 'core' heritage landscape around the mansions, Terrace, Orangery and south lawns
- Repair and extend the Orangery for events use
- Restore the West Horseshoe Pond and repair the Round Pond
- Repairs to the historic parkland structures and follies
- Refurbish the heritage planting beds around the south lawns and the rockery
- Heritage tree management and restoration of 'designed' views
- Relocate the pitch and putt golf course away from the historic parkland to open up and reconnect the heart of the park



Parks for People – Parkland Buildings and Structures

Surveys of the key park buildings and structures have been carried out and a repair strategy has been developed.

Parks for People Project -

- 8 Key buildings and structures close to the mansions will have full repairs
- 7 other important parkland structures will have 'Priority 1' Repairs to prevent further deterioration whilst we seek further funding
- Maintenance and Management plans for these structures are being drawn up to ensure they are correctly maintained in the future



Parkland Structures – Proposed Scope of Works



Orangery Full Repairs and Alterations

Orangery

- Full Repair of the existing building fabric inside and out
- Bring back into regular use as an events venue



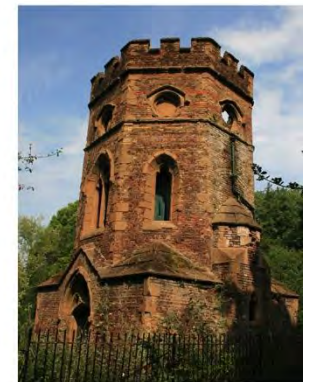
Parkland Structures - Full Repairs

- South West Terrace Arch
- South East Terrace Arch
- Terrace, West Viewpoint and Steps
- Terrace, Wall and Urns
- Gothic Screen
- Terrace, East Steps
- South Lawn Half Bridge
- South Lawn Middle Bridge



Parkland Structures - Priority 1 Repairs

- North Gateway Entrance
- Temple
- Inner Boundary Wall
- Kitchen Garden Walls
- East Archway
- Potomac (Gothic) Tower



Parks for People – Ponds past, present and future

- Repair and dredge the Round Pond so we can bring back boating.
- Recreate the west half of the Horseshoe Pond to re-establish the historic setting for the Orangery, to collect rainwater from the terrace and Orangery, and to attract and provide a new habitat for wildlife.



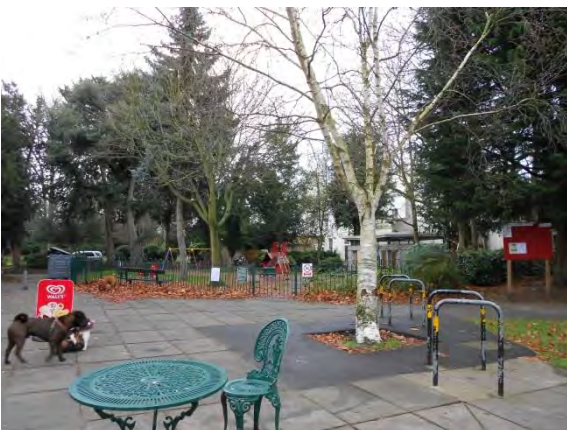
Parks for People – Heritage Trees and Views

- Maintain and celebrate the parks magnificent trees and views. Carry out specialist tree management and research to identify and protect our heritage trees.
- Do selective pruning and remove a few more recent trees to open up lost views.
- Set up tree trails, interpretation and events to allow visitors to discover our amazing trees.



Parks for People – Café Area

- Create a 'Museum collections' themed landscape 'promenade' and play trail along the historic route linking the museum to the café and the Round Pond
- Improve the planting, paths and seating areas around the café
- Café building - carry out roof repairs and redecoration

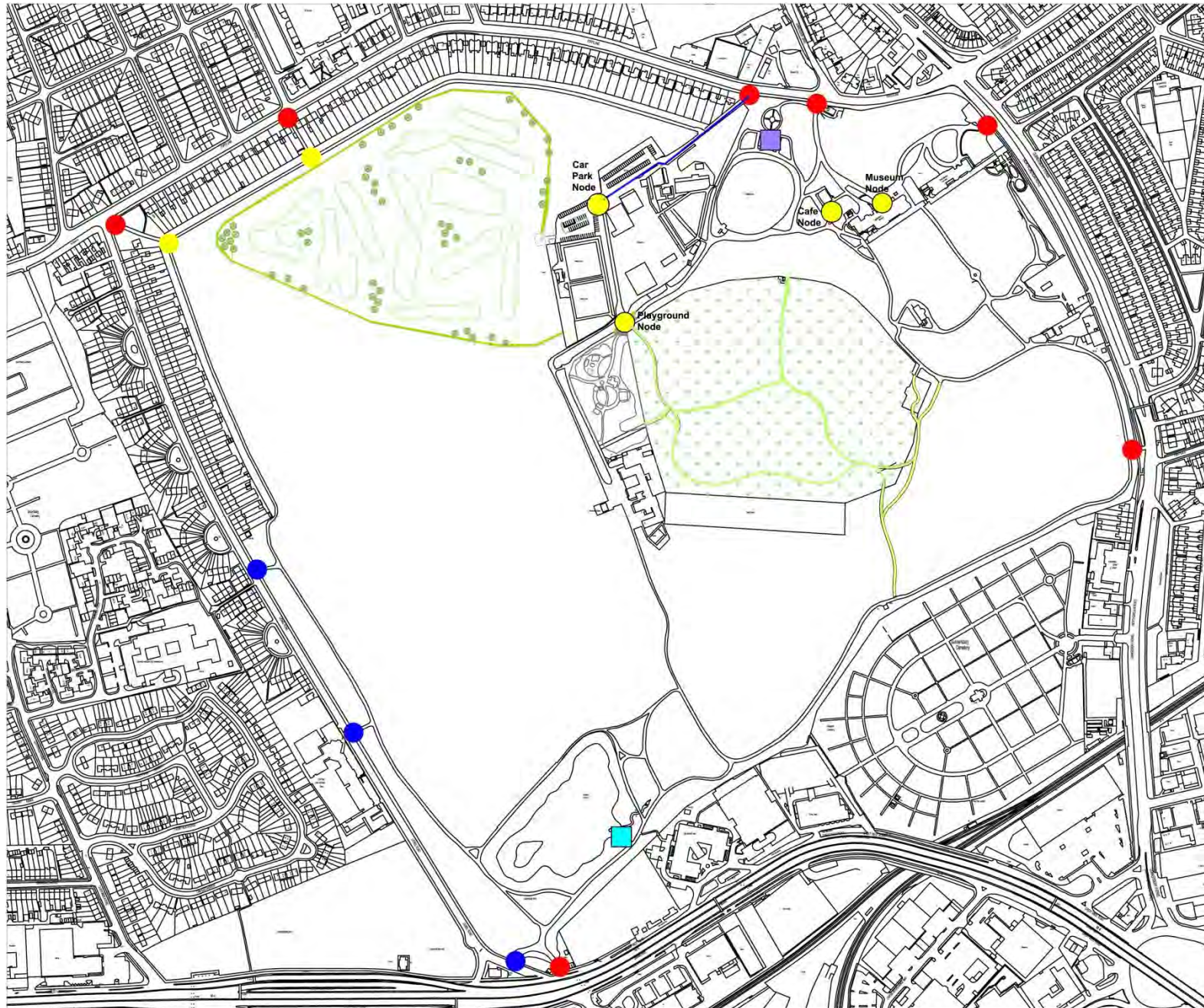


Parks for People – Community Garden

Develop our community history garden in the east walled garden, including a 'plants and gardens' timeline, kitchen garden beds, skills and learning activities and volunteers plots



Parks for People – Stage C Outer Parkland Works

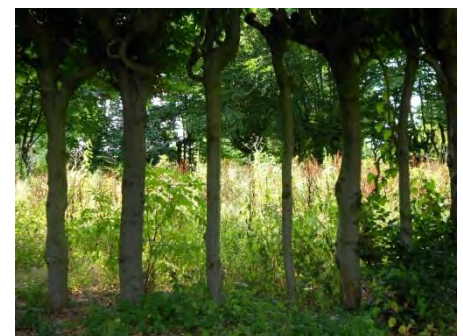


KEY

- New Welcome and information signs at main entrances
- Orientation nodes with new signage, wayfinding, seating, paving and planting
- New signs and paving at minor entrances
- Safe pedestrian route marked up through drive and car park
- Pitch and Putt new location - new fence and hedge only to be provided through HLF project
- pitch and putt existing location
- New footpath and nature trail linking heritage core with outer parkland
- Potomac Tower and Pulhamite Rockery repairs
- Temple Repairs

Parks for People – Activities

- Return family boating activities to the newly repaired Round Pond
- Run a range of learning, volunteering and training activities linked to existing and new features in the park
- Interpret the unique heritage and landscape of Gunnersbury park through a wide range of media
- Create a nature trail with new habitats to increase biodiversity across the park



Parks for People – Infrastructure and Management

- New footpath links to open up and reconnect the inner and outer parkland
- New signage and interpretation throughout the park
- Welcoming and informative park entrances and improved way-finding
- Employ dedicated project staff for park development, management, outreach and education
- Develop the park stakeholder and volunteer groups and provide training to empower them to help run the park



10 Year Park Maintenance and Management Plan

Purpose of the Park Management and Maintenance Plan

- To assess the existing park, its significance and its current maintenance and management
- To identify and set out future management and maintenance needs and targets
- To assess the impact of the HLF park project on resources, skills and budget
- To review the options for future park management structures
- To identify opportunities for community engagement in the park management
- To set out a Park Action Plan working towards Green Flag and delivery of targets

Process

- Review existing park maintenance and management arrangements
- Carry out Green Flag audit for the existing park
- Carry out stakeholder consultation including interviews with resident stakeholders, leaseholders, The Friends Group, The volunteers Group and other groups actively involved in the park, and community event and drop in session
- Ongoing liaison with other consultants from both the parks for People and Museum HLF projects to ensure joined up thinking and sharing of information
- Full final draft by end December 2013

10 Year Park Maintenance and Management Plan

Key Issues identified –

- The park needs a vision that provides clear direction and sets a programme of objectives
- Grounds maintenance is currently adequate and should be aiming higher
- The park needs dedicated, park-based, management and maintenance staff
- The park needs programmed investment in its infrastructure (paths, signage, furniture, structures and facilities etc.).
- The current dual council stewardship of the park causes difficulties in governance and decision making
- The park is some way short of meeting 'Green Flag' standards but the HLF project proposals and other recent improvements should help it to achieve this in the future

10 Year Park Maintenance and Management Plan

The Way Forward

- Continue to develop the park master plan of phased works to restore, maintain and manage Gunnersbury Park as a nationally important heritage park and a vibrant community hub offering a wide range of park activities and attractions.
- Set up a strong, grounds maintenance team of site-based staff, with the skills and resources to develop and run an excellent park.
- The HLF project will re-establish a dedicated Park Manager role based in the park, working directly with the grounds staff to ensure high quality maintenance is delivered and the park is managed effectively. The park will also have dedicated park education and outreach officers and three park apprentices.
- Provide a range of ways for local people to get involved in managing and looking after the park, including a Park Stakeholder Forum, community and volunteer activities, and skills and learning opportunities linked with Capel Manor College.



Gunnersbury Park



Activities and Community Engagement

November 2013

Gunnersbury Park
Popes Lane
London
W3 8LQ

Activity Plans - Aims

Our aims are to:

- develop activities for the museum and park that meet the needs of the two borough's **diverse communities** while protecting and conserving the heritage value of Gunnersbury
- **celebrate** the history of Gunnersbury and its collections with all our residents and visitors
- build in a **training and learning** opportunities into every aspect of the museum and park's development and maintenance
- work in **partnership** with the local community to support community values and ensure sustainability

Consultation and Community Engagement

So far in development stage, over baseline figures:

- Over **2500 participants** have attended our activities
- Over **70 volunteers** have contributed over **850 volunteer hours**
- **21 training opportunities** to young people
- **14 young people** have achieved a qualification
- Consulted over **500 non-users**
- Talked to **15 other heritage projects** about their experiences
- Working with **15 community projects and service providers** to develop projects

Activity Plan – Formal Learning Programme

- Schools workshops and resources across park and museum
- Further and higher education placements
- Embed Gunnersbury into higher and further education courses
- Self led resources for English classes in partnership with local English providers
- Build regular visits into English courses
- Linked to capital works e.g. placements, tours, meet the team days



Activity Plan – Communities Offer

- Fixed offer of tours and workshops about the galleries, house and park
- Train community leaders to develop and deliver tours, relevant to specific groups
- Handling collections for groups to use e.g. visually impaired handling collection
- Enable music groups to use the museum as a performance space
- Pop Up Museum
- Reminiscing offer with Public Health teams
- Links to Libraries and Adult Learning Services
- Artists in Residence
- Community Garden



Activity Plan – Public Programme

- Temporary exhibitions
- Range of regular tours, talks and workshops
- Vary opening hours to enable ‘Lates’
- Music in the Museum
- Online collections database and research hub
- Regular family learning
- Opportunities to see and learn from capital works



Activity Plans – Training and Volunteering

- Over 30 types of training incl. CPD, Arts Awards
- Apprenticeships, Internships, work placements
- Community Ambassadors
- Horticulture in Walled Garden
- With Capel Manor, Building Crafts College, Accession Social Enterprise
- Volunteering programme supporting all areas of projects
- Working with community groups to attract diverse range of people and to give people work based skills

