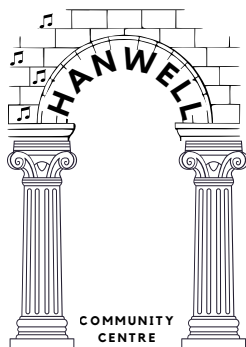


2025/26

**'YOUR COMMUNITY  
OUR HANWELL'**



# HANWELL COMMUNITY CENTRE

## 2025/26 BROCHURE



**'ALL IS WELL.  
WHEN IN HANWELL'**

How to book

Outdoor Events  
& Hospitality

Price List

Premium  
Upgrades

Spaces for hire

What's on in the  
centre

Heritage

F.A.Q's



020 8575 7019



hanwellcc@ealing.gov.uk



Hanwell Community Centre, Westcott  
Crescent Hanwell W7 1Pd, London

## How to book?

Send your booking enquiry today to secure your room hire. We only accept booking by email, but please do feel free to call or pop in and someone from the team can support you on site too. Once we receive the below information by email, we will send over our booking forms for you to complete, the risk assessment document and request any relevant insurance/certificate documents and finally arrange a time for you to visit to give you a health and safety tour of the space before your booking.

Email [hanwellcc@ealing.gov.uk](mailto:hanwellcc@ealing.gov.uk) with the details below:

- Date
- Time of Arrival and Departure
- No. of People
- Will there be Food/Drink? (i.e. Do you require access to our kitchen/refrigerators)
- Will you be playing Music?
- Brief description of Event
- Will you be bringing any external suppliers or entertainment?
- (such as florists, decorators, bouncy castle hire, other?)
- Do you have specific table/chair/stage/lighting requirements?



**Weddings**  
**Exhibitions**  
**Work events**  
**Special occasions**  
**Birthday parties**



**Football**  
**Basketball**  
**Yoga**  
**Fitness classes**  
**& much more!**

Email us today and our team will then arrange a date and time to review your booking and provide you with a tour of the space.

# OUTDOOR EVENTS & HOSPITALITY



## LET US PLAN YOUR NEXT OUTDOOR SPACE

### HIRE US FOR:

**SUMMER FUN DAYS  
MUSIC EVENTS  
OUTDOOR CINEMA  
OUTDOOR ACTIVITIES  
POP UP MARKETS  
OUTDOOR GAMES &  
COMPETITIONS  
AND MUCH MORE!**



**LET US SUPPORT YOU WITH  
CREATING AN OUTDOOR  
EXPERIENCE THAT BRINGS  
THE COMMUNITY TOGETHER  
IN THIS UNIQUE AND  
HISTORIC BUILDING!**

# PRICING LIST AND ROOM OVERVIEW

(HOURLY RATES)

## WEEKEND

Meeting Room - £40  
Sports Hall (Sports Hire) - £64  
Sports Hall (Party/Event) - £115  
Sports Hall (Children's party - until 5pm) - £74  
Badminton Court (Badminton) - £13  
Badminton Hall (Non Badminton - Full room) - £64  
Badminton Hall (Non Badminton - Per court) - £15.50  
Boxing Studio - £50  
Judo Studio - £43  
Art Room - £35  
Pottery Room - £50  
Upholstery - £35

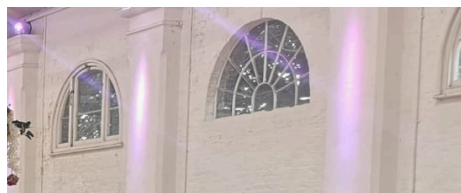
## WEEKDAY

Meeting Room - £36  
Sports Hall (Sports Hire) - £64  
Badminton Court (Badminton) - £13  
Badminton Hall (Non Badminton - Full room) - £64  
Badminton Hall (Non Badminton - Per court) - £15.50  
Boxing Studio - £50  
Boxing Training room (9am to 5pm) - £25  
Judo Studio - £43  
Art Room - £35  
Pottery Room - £50  
Upholstery - £35

For more information and rates, email  
[hanwelcc@ealing.gov.uk](mailto:hanwelcc@ealing.gov.uk)



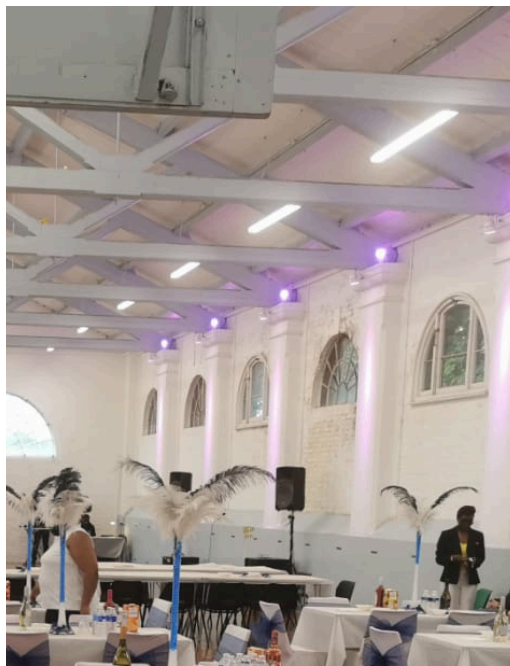
**WHY NOT  
UPGRADE YOUR  
HALL BOOKING?**



**PREMIUM  
UPGRADES...**

**STAGE  
SMART SCREEN  
PROJECTOR  
PROJECTOR SCREEN  
ROUND TABLES  
UPLIGHTERS**

**...FOR YOUR SPECIAL  
OCCASION**



**FOR PRICES,  
ENQUIRE AT THE  
CENTRE RECEPTION  
OR CALL/EMAIL US!**

**HANWELLCC@EALING.GOV.UK**

**020 8575 7019**



# SPACES FOR HIRE

## HALL - SPORTS



### CAPACITY

EMAIL US FOR MORE INFO  
FOR BOOKINGS SUCH AS  
FOOTBALL, DANCE, YOGA  
& BASKETBALL

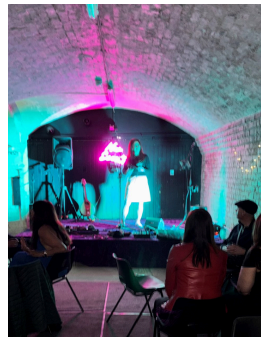
## MEETING ROOM



### CAPACITY

40 PEOPLE

## BASEMENT



### CAPACITY

85 PEOPLE

## BADMINTON COURT



### CAPACITY

8 PEOPLE  
(4 COURTS)

## HALL - EVENTS



### CAPACITY

200 SEATED  
250 STANDING

## BADMINTON HALL



### CAPACITY

EMAIL US FOR MORE INFO  
FOR SPORTS SUCH AS  
GYMNASTICS

# SPACES FOR HIRE

## JUDO STUDIO



**CAPACITY**  
20 PEOPLE

## POTTERY ROOM



**CAPACITY**  
25 PEOPLE

## UPHOLSTERY ROOM



**CAPACITY**  
35 PEOPLE

## ART ROOM



**CAPACITY**  
5 WITH EASEL/  
12 STANDING

## BOXING STUDIO



**CAPACITY**  
25 PEOPLE

## BOXING TRAINING ROOM



**CAPACITY**  
EMAIL US FOR  
MORE INFORMATION

# What's on!

Each week there are a variety of activities, events and clubs to get involved with! For more info email us and we can send you details!

MON

Community Fridge  
Upholstery Classes  
Pottery Classes with Hanwell Pottery  
Chair exercise

Art classes with 4020  
Badminton, Gymnastics & Football  
Tuition & Stencils in the foyer!  
Muay Thai

TUES

ABC Boxing  
Upholstery Classes  
Pottery Classes with Hanwell Pottery  
Art Classes with 4020

Badminton, Gymnastics &  
Football  
Boutaib Fight Team  
Stencils in the foyer!

WED

Muay Thai  
Upholstery Classes  
Pottery Classes with Hanwell Pottery

Capoeira  
Badminton  
Football  
Gymnastics

THURS

Community Fridge  
Pottery with Hanwell Pottery  
ABC Boxing  
Badminton

Gymnastics  
Art Classes with 4020  
Boutaib Fight Team  
Football

FRI

Judo Club  
Boutaib Fight Team  
Badminton  
Football



## LIVE MUSIC ONCE A MONTH!

HANWELL CAVERN  
Community pop-up live music venue -  
keeping Hanwell's music heritage alive  
and kicking!

## LIVE MUSIC ONCE A MONTH!



NIX EVENTS  
Soul Quenching Live Music Vibes  
& Open Mic!

Sweatergy Dance  
ABC Boxing  
Ward Surgery  
Pottery with  
Hanwell Pottery  
Church service - Sundays

SAT



---

# HANWELL HERITAGE; BY DR JONATHAN OATES

---

**OUR TOWN IS FULL OF AMAZING HISTORY AND WE SAT DOWN WITH DR JONATHAN OATES, AUTHOR & EALING ARCHIVIST, TO HEAR MORE ABOUT WHAT MAKES HANWELL SO UNIQUE!**

## Part 1

Did you know that Hanwell was mentioned in the Domesday Book of 1086 – unlike Ealing. It was then spelt Hannewelle. There was a mill, a wood and meadowland. St. Mary's church is the third church building to be on the site it now stands at. Hanwell has a charity dating back to 1484, established by William Hobbayne and it still exists.

In 1588 John Pryor killed Agnes East with an axe in Thomas Miller's house in Hanwell.

Jonas Hanway, who popularised the use of the umbrella, was buried in Hanwell. The Wharncliffe Viaduct, built in 1836-1838, was Brunel's first major construction project and can be viewed from Churchfields Recreation Ground, Hanwell's first park. There was a movement to rename Hanwell in the nineteenth century as Elthorne, with the result that the railway station was renamed Hanwell and Elthorne.



The Central London District School was opened in Hanwell in 1857 for orphaned children from London. It was known as the Cuckoo School because of the nearby Cuckoo Farm.

Charlie Chaplin and his brother went there in the 1890s, but most of the children later worked as servants if female or sailors if male. In the 1920s Chaplin, now a world famous film star visited the school. It was closed in 1933 and most of the buildings were demolished. Much of the land on which the school once stood is now a housing estate. There were divergent views about Victorian Hanwell with one commentator writing of 'The neighbourhood is green and pleasant' but another wrote 'a duller and plainer [High] street is not to be found'.



---

# HANWELL HERITAGE; BY DR JONATHAN OATES

---

**OUR TOWN IS FULL OF AMAZING HISTORY AND WE SAT DOWN WITH DR JONATHAN OATES (AUTHOR, HISTORIAN & ARCHIVIST) TO HEAR MORE ABOUT WHAT MAKES HANWELL SO UNIQUE!**

## Part 2

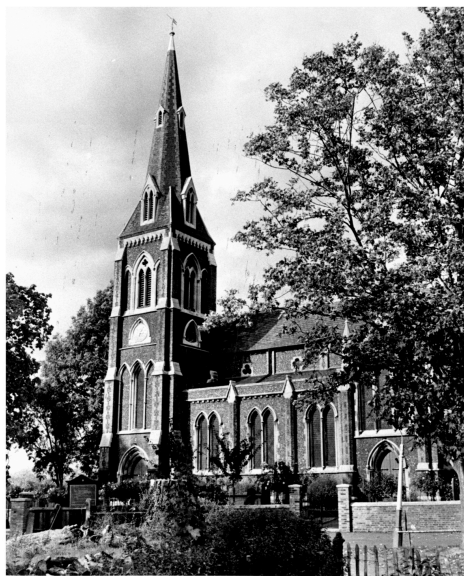
Horse buses to and from London collected and deposited passengers at the Duke of York pub twice a day in the 1870s and 1880s.  
Dr John Conolly ran a private asylum in his house, The Lawn, until his death in 1866. In 1912 there was a monument to him in the newly opened Conolly Dell park.

Hanwell Library on Cherington Road is the oldest purpose built library in the borough which is still in the same building as it was when it was opened in 1905.

The first librarian was Frank Pocock, killed in World War One.

Hanwell was amalgamated with Ealing in 1926, the same year that Greenford and Perivale were also incorporated with their larger neighbour.

Locations in Hanwell such as St. Mary's church and the library were used as locations in the film Carry on Constable, in 1960.



## FREQUENTLY ASKED QUESTIONS



- **How do I book a room?** Please refer to Page 2 for more information and once you are happy with everything we will send you the internal booking forms for you to complete
- **Minimum hire period** - There is a minimum hire period of 1 hour for all rooms on weekdays. There is a minimum hire period of 2 hours for meeting rooms on weekends. There is a minimum hire period of 4 hours for private events on weekends.
- **What is a risk assessment?** A risk assessment is a systematic process used to identify, evaluate, and mitigate potential hazards and risks in a given situation, particularly in public places like a community centre
- **Do you allow external entertainment/suppliers** - Yes, we ask for their relevant and appropriate insurance/certification such as a DBS Check, alcohol license, TEN Notice, Public Liability certificate, Food hygiene certification
- **Is there parking?** Yes, we have a free car park on site for centre users
- **Do you have a kitchen?** Yes, however it is for reheating rather than cooking (there is also access to a fridge). Access to the kitchen is included in the hall booking fee for events and special occasions.
- **What are your Opening hours?** Monday to Friday ; 8am to 10pm. On Saturdays & Sundays timings can vary (for events and special occasions we are open until midnight)
- **What payment method do you accept?** We are cashless. All payments must be made online via: [www.ealing.gov.uk/hanwelcc](http://www.ealing.gov.uk/hanwelcc) (all damages deposits must be paid in cash)
- **Why do I need to come in for a safety tour?** - To ensure you can have a safe and enjoyable time here, we take the time to show you around the space, and highlight the key evacuation routes in an emergency, where toilets are and also how to get around the building.
- **What days can I visit for a tour of the rooms?** Mondays to Fridays between 9am and 5pm. But please do email and book a tour in advance
- **Do I need a hygiene certificate?** Yes, If you have an external caterer bringing and serving food
- **Do you provide tables/chairs** - Yes, we also have premium tables, stages, a screen and uplighters for an additional fee
- **Is the building accessible?** The basement and ground floor are accessible however as we have not lift, the upper floors are not accessible.
- **How do I stay up to date with the centre events?** Please sign up to our newsletter, email us at [hanwelcc@ealing.gov.uk](mailto:hanwelcc@ealing.gov.uk)
- **Where can I send queries?** [hanwelcc@ealing.gov.uk](mailto:hanwelcc@ealing.gov.uk)
- **What is your phone number?** 020 8575 7019
- **Do you have a cafe?** Yes, they are open daily on Monday to Friday from 9am to 5pm, weekends can vary
- **Do you have first aid equipment?** Yes, behind the reception - speak to staff on site
- **When is my cash deposit returned?** Your cash deposit is returned on the next working day after your event, provided there are no issues



### A few notes to remember!

- Need to enquire about getting your content on the **Screen, Facebook** or on the **noticeboards?**

Contact - [hanwelcc@ealing.gov.uk](mailto:hanwelcc@ealing.gov.uk)

- Interested in our latest **events, clubs and workshops** at the centre, or would you like to share your organisation information in the centre **newsletter?**

Contact - [hanwelcc@ealing.gov.uk](mailto:hanwelcc@ealing.gov.uk)

**THANK YOU**

**FOR YOUR SUPPORT.**

**FROM THE TEAM AT**

**HANWELL COMMUNITY CENTRE**



**'YOUR COMMUNITY. OUR HANWELL'**