

# Allenby Primary & Dormers Wells High School



## SCHOOL STREETS ENGAGEMENT RESULTS



26 FEBRUARY 2025



# Executive Summary

Ealing Council is committed to **enhancing transport** and **street environments** to encourage **active travel** and create **safer, healthier streets**.

As part of this initiative, the Council has been implementing **School Streets**, restricting motor traffic outside school gates during key drop-off and pick-up times. The Council plans to implement School Streets at **50 education providers by 2026**.

**41 School Streets** have been introduced since **September 2020**.

## What has changed?

Up to **18%** Reduction in school-related **car use**



Up to **29%** Increase in active travel

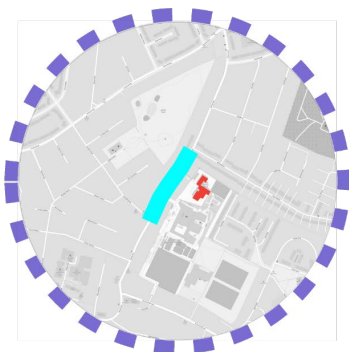


# School Overview

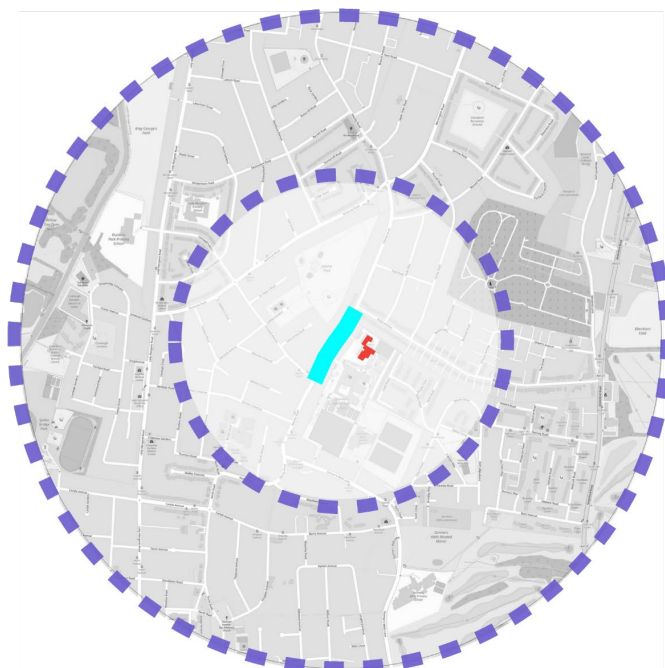
## Allenby Primary School

- Location: Allenby Road, UB1 2HX
- Type – Primary School
- Form Entry – 1 entry form per year group
- **Number of pupils – 247**
- Details of any CPZ: No CPZ
- Travel for Life (STARS) accreditation level: Not engaged

### Geographical data from school census:



**79% of pupils** live within **0.5 miles** of school



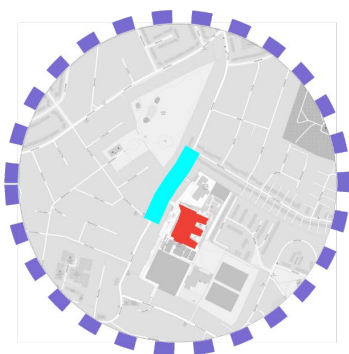
**8% of pupils** live between **0.5 and 1 mile** of school

# School Overview

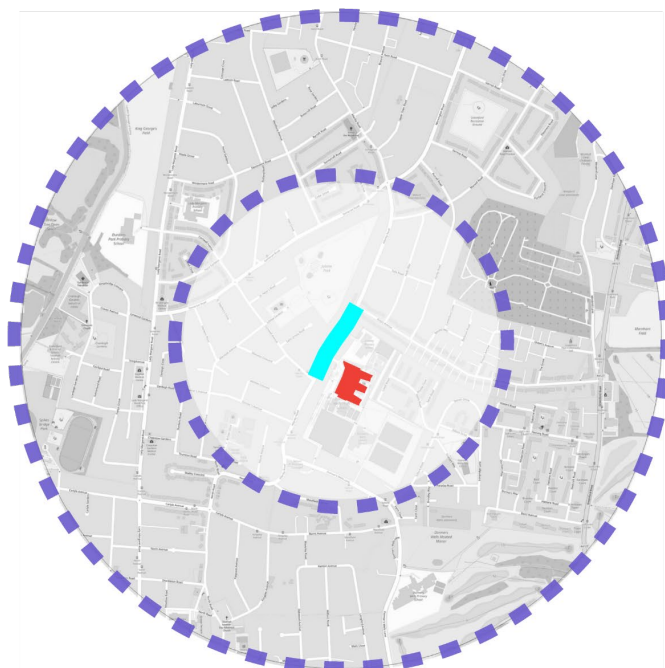
## Dormers Wells High School

- Location: Dormers Wells Lane, UB1 3HZ
- Type – High School
- Form Entry – 8 entry forms per year group
- **Number of pupils – 1,495**
- Details of any CPZ: No CPZ
- Travel for Life (STARS) accreditation level: Not engaged

### Geographical data from school census:



**50% of pupils** live within **0.5 miles** of school

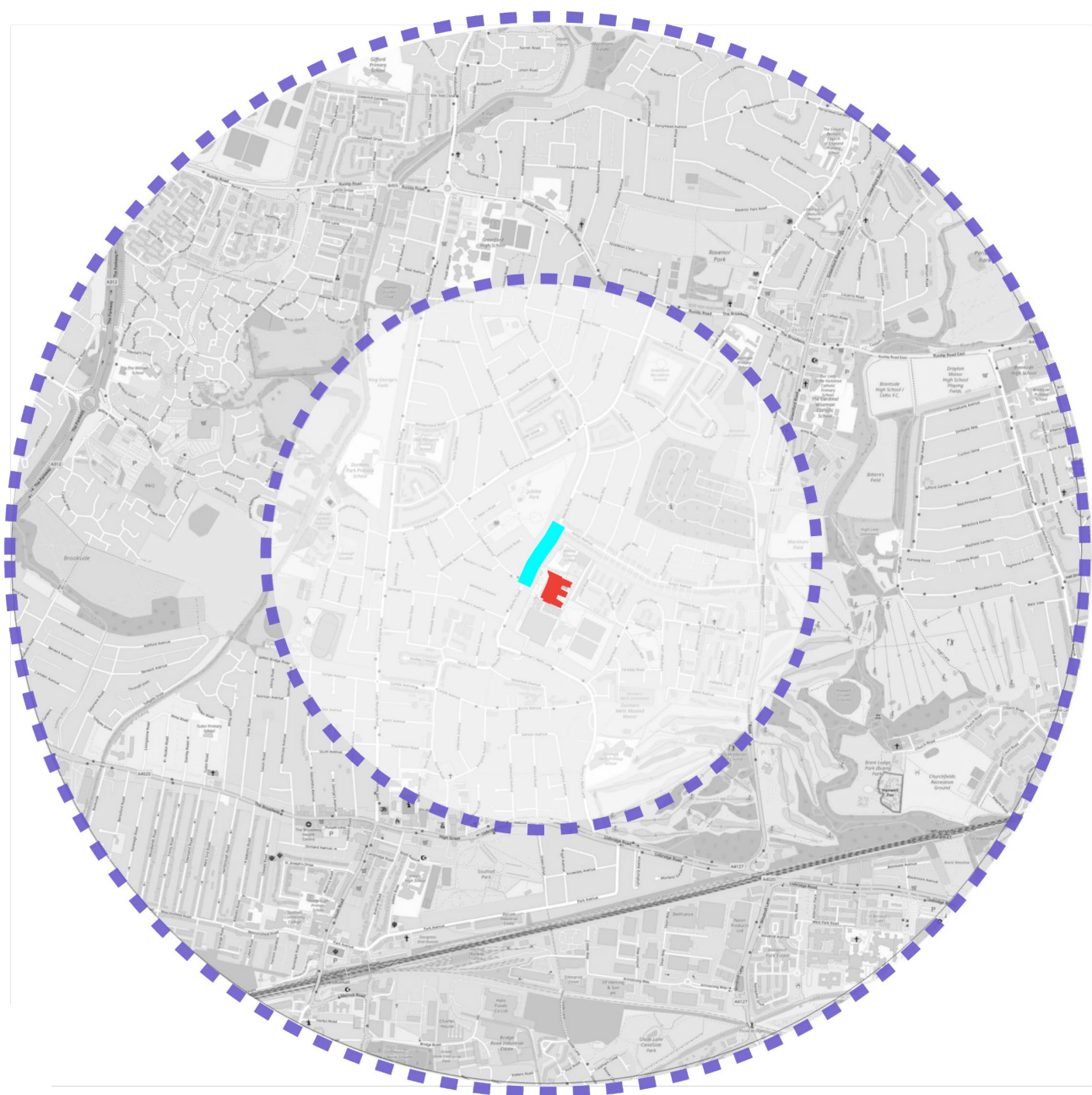


**32% of pupils** live between **0.5 and 1 mile** of school

# School Overview

## Dormers Wells High School - continued

**12% of pupils** live within **1-2 miles** of school



# Engagement Summary

There were **78 total responses** from the online survey, along with **one written** submission and **two email** submissions. **The School Hands Up Survey** included **49 responses** from students at Allenby Primary and **872** from students at Dormers Wells High School.



**32%** of survey respondents were residents within the School Street.  
**24%** of survey respondents were residents outside of the School Street.

## How students travel to school?

### Allenby Primary School

**59% walk**  
**31%** arrive by car  
**(Out of 49 students)**

### Dormers Wells High School

**52% walk**  
**18%** use bus  
**(Out of 872 students)**

## Comments highlighted in the survey and in-person events

### Safety Improvement

Respondents expressed that the School Street would improve student safety and makes the journey more enjoyable by reducing traffic.

### Congestion & Speeding

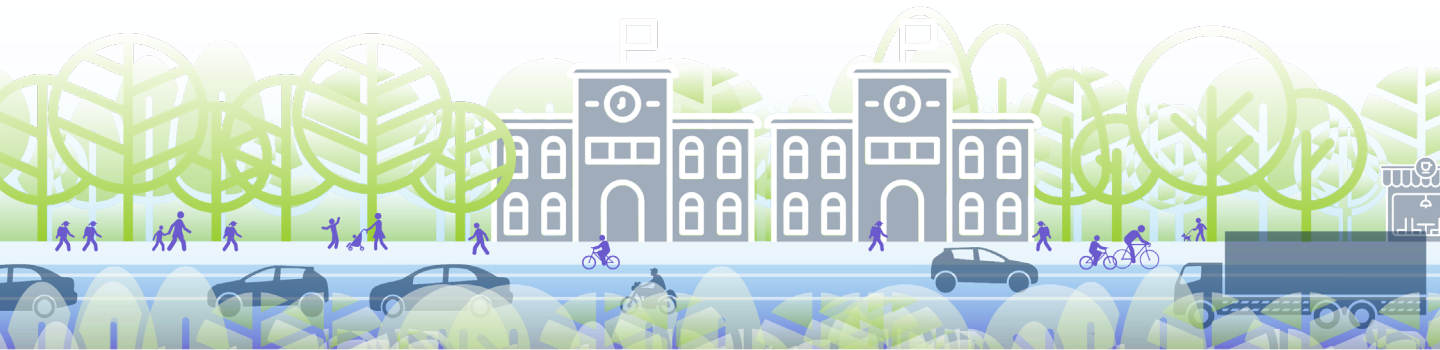
Respondents raised concerns that parents are causing parking issues, blocking resident driveways, and speeding during school drop-off.

### Traffic Displacement

Respondents highlighted concerns about congestion building up on Lovell Road, King's Avenue, Cornwall Avenue, and Somerset Road.

# Engagement sessions and feedback

The consultation for the proposed School Street at Allenby Primary School and Dormers Wells High School took place from **27 January to 16 February 2025, engaging local residents, parents, and school staff** through multiple methods of communication.



## Online Survey

Hosted on Give My View, open from **27 January to 16 February**. Paper copies were available upon request.



## Hands Up Survey

Included **49** students from Allenby Primary School and **872** from Dormers Wells High School.



## Letters to residents

Sent via Royal Mail on **27 January**, reaching **1,574** addresses, including 69 properties within the proposed School Street zone.



## Drop-in session

An in-person community session was held on the **4 February** and an online community engagement event was held on **10 February**. A parent drop-in session was held on **7 February**.



## School Travel Team

Available to receive inquiries via **email, letter, and phone** calls throughout the consultation period.

# The Proposal

Proposed School Street for Allenby Primary School and  
Dormers Wells High School:  
**8.15 to 9.00am and 2.45 to 3.45pm**



**Allenby Primary School**

**Dormers Wells High School**



# Feedback on the proposed School Street – Online Survey

Survey respondents were asked: **Please tell us any compelling reasons why this proposal should not be progressed.**

**61** survey comments were received in total.

The list of themes that emerged in support of the proposal are shown below, along with the number of respondents that expressed the theme.

**Please note, respondent feedback could fall under multiple themes.**

Theme and details	Number of respondents
<b>Parents are causing parking issues</b> , blocking resident driveways and speeding during school drop off.	4
<b>The scheme would help reduce environmental issues.</b>	2
<b>The scheme would help to increase safety.</b>	2
<b>Several near misses occurred in the area</b> due to dangerous driving during school opening and closing times.	1

## Feedback on the proposed School Street – Online Survey (continued)

The concerns that emerged from the responses are shown below, along with the number of respondents that expressed the theme.

**Please note, respondent feedback could fall under multiple themes.**

Theme and details	Number of respondents
<b>Concerns about traffic displacement</b> , particularly with traffic building up in Lovell Road, King's Avenue, Cornwall Avenue and Somerset Road.	21
<b>Proposal would cause inconvenience to residents</b> , especially to drive to home or to work.	12
<b>Proposal would worsen parking issues</b> , especially on King's Avenue and Cornwall Avenue, with concerns about parents blocking driveways.	10
<b>Proposal would be a revenue generating scheme.</b>	10
<b>Proposal would increase journey times</b> , forcing traffic onto alternative roads and raising pollution levels.	7
<b>There are no significant traffic issues in the area.</b>	5
<b>Proposal would have negative impact on Local Business</b> , reducing customers for businesses and create delivery challenges.	5
<b>Concerns about accessibility for disabled or elderly individuals.</b>	6
<b>Proposal would add unnecessary restrictions to an already limited area</b> with single yellow lines and nearby school streets.	4
<b>Concerns about access for emergency vehicles.</b>	4
<b>Staffs and other visitors would not be able to access school parking.</b>	3
<b>The scheme would impact the school staff</b> , especially when they have to leave early or have any school events.	3

## Feedback on the proposed School Street – Online Survey (Continued)

Theme and details	Number of respondents
<b>Proposal would be a waste of time and resources.</b>	2
<b>A high school does not require a school street</b> , as most students commute using public transport.	2
<b>Proposal would delay public transportation links of the 105 bus.</b>	2
<b>Concerns about visitors and carers</b> , especially visitors for elderly people.	2
<b>Buses on this route are not reliable.</b>	2
<b>Parents should be able to pick and drop kids from school.</b>	2
<b>Children should learn to walk on the pavement.</b>	2
<b>Residents should not have to pay for a permit.</b>	1
<b>The proposal would cause inconvenience to commute to the station.</b>	1
<b>The proposal would make it difficult to commute to the Dormers Wells Sports Centre.</b>	1
<b>Primary school kids are too young to cycle or walk unaccompanied.</b>	1
<b>Roads are not in good condition.</b>	1
<b>School Street is not effective in improving safety.</b>	1
<b>The proposed school street area lacks adequate walking and cycling infrastructure</b> , making it challenging for children to commute to school.	1
<b>The proposal would impact school transportation for the children of Allenby Primary School.</b>	1

# Suggestions from the Online Survey

Suggestion	Number of respondents
The roads near school street <b>need better traffic enforcement in the area.</b>	3
<b>Workers in this area should be given access to the road.</b>	2
<b>Restrict people from parking near the school.</b>	2
<b>Make streets wider</b> to accommodate higher volumes of traffic.	1
<b>School staff should be given permits to enter the zone.</b>	1
<b>Dormers Wells Sports Centre members should be given a free permit for vehicle access.</b>	1
<b>People should be forced to walk from Uxbridge Road.</b>	1

## Feedback on the proposed School Street – Written Submissions

In addition to the survey responses, two emails and one letter was received.

One of the email respondents also completed the survey so their feedback is included in the section above.

From the remaining email and letter the following key themes were raised:

- Support for the proposed School Street scheme is highlighted by mentioning ongoing issues with:
  - parents parking in front of residents' properties and blocking dropped kerbs
  - pedestrian crossing at Allenby Rd is a frequent near miss location during school pick-up and drop-off times
- Concerns about accessibility for disabled or elderly individuals.
- Proposal would be a revenue generating scheme.

---

## Proposal Feedback from Events

---

### **Resident/Community drop-in session**

Two community drop-in sessions took place as part of this engagement:

- 4 February 2025 – an in-person drop-in at Dormers Wells High School. 5 people attended this session.
- 10 February 2025 – an online drop-in session held on MS Teams. 1 person attended this session.

The feedback received during these events is summarised below.

### **Parent drop-in session**

Approximately 60 parents and staff members were approached for feedback during the parent drop-in session on 7 February 2025 at Allenby Primary School. The session included handing out leaflets, encouraging parents and staff to fill out the engagement survey and provided an opportunity to ask questions about the scheme.

The feedback received during this event is summarised below.

### **Feedback from events**

- Concerns about the lack of exemptions for residents living near the proposed School Street. The resident was concerned about the lack of exemptions for disabled people and their disabled child's access to a nearby school.
- Support for the proposed School Street scheme as motor vehicles speed on this stretch of the road and make dangerous manoeuvres. Concerns were raised about inconsiderate parking, particularly parents parking on residents' driveways which may pose a risk to vulnerable residents.

## Proposal Feedback from Events - continued

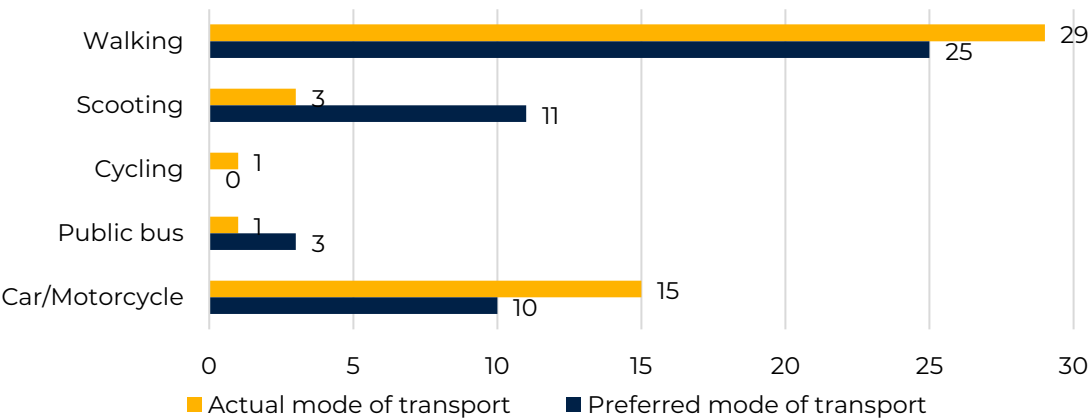
---

- Concerns about traffic displacement on surrounding roads and difficulties for drivers accessing the area.
- Concerns about access for staff members who rely on driving to school, particularly about longer commute times or limited access to parking. These concerns were especially relevant to those who need to drive due to work requirements.
- **Telford Road:** The absence of a pedestrian crossing on Telford Road was raised as a concern, particularly as it is seen as dangerous for children. It was raised that the only crossing available is located towards the primary school, making it difficult for pedestrians coming from other directions.
- **Cornwall Avenue:** Concerns were raised about Cornwall Avenue, where parents' vehicles are regularly parked on double yellow lines, causing disruptions. Concerns were also raised about how buses might be affected, with fears that traffic displacement could further clog the surrounding roads. Additionally, there were concerns about student behaviour near the bus stop on Cornwall Avenue, as children often spill out onto the road, raising safety issues.
- Concerns were raised about how the proposed scheme would address the scheme's aims, particularly regarding the safety and accessibility of the roads around the school. Some felt that there was not enough clarity on how the scheme would solve the specific concerns raised.
- The need for improved parking enforcement on Cornwall Avenue was raised. Attendees raised that stronger enforcement of parking regulations could help alleviate some of the parking and congestion issues currently faced by the community.

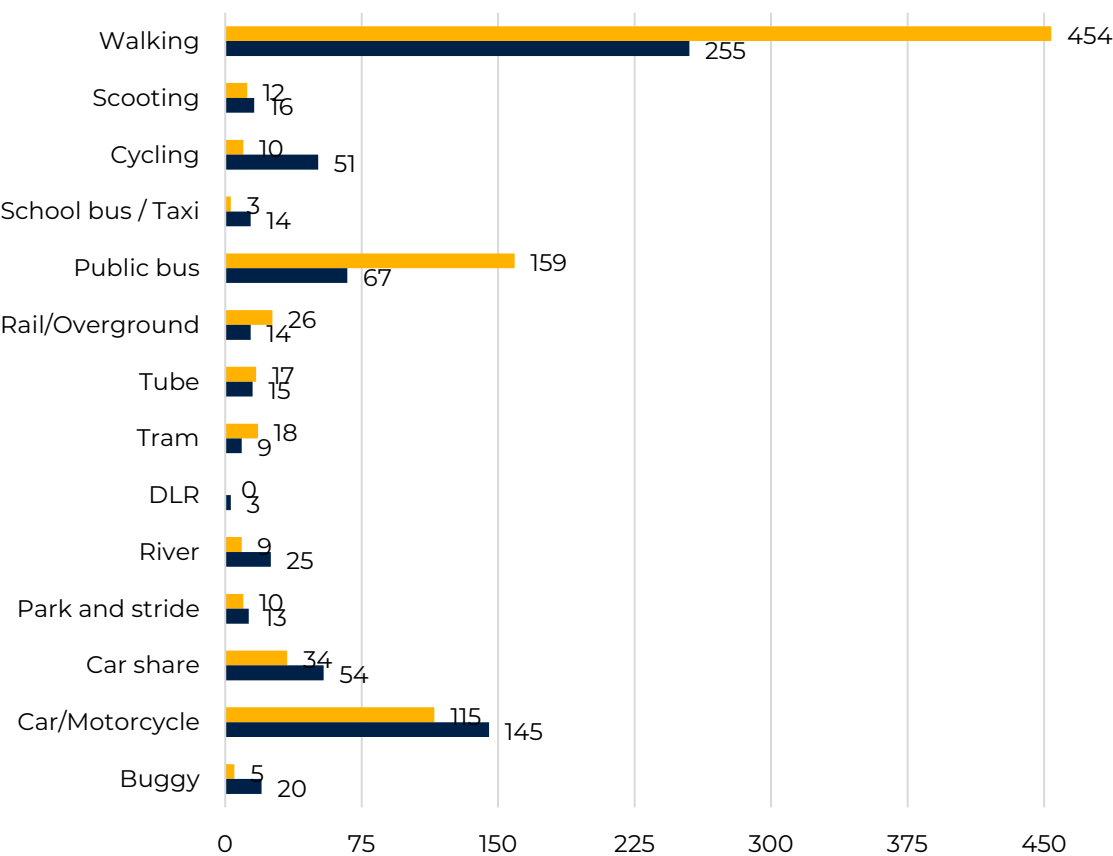
## Hands Up Survey

Hands Up Surveys were conducted at Allenby Primary School and Dormers Wells High School to assess current transport behaviour. The survey received **49 responses** from Allenby Primary School and **872 responses** from Dormers Wells High School, recording their actual and preferred modes of transport. The results are as follows.

### Allenby Primary School

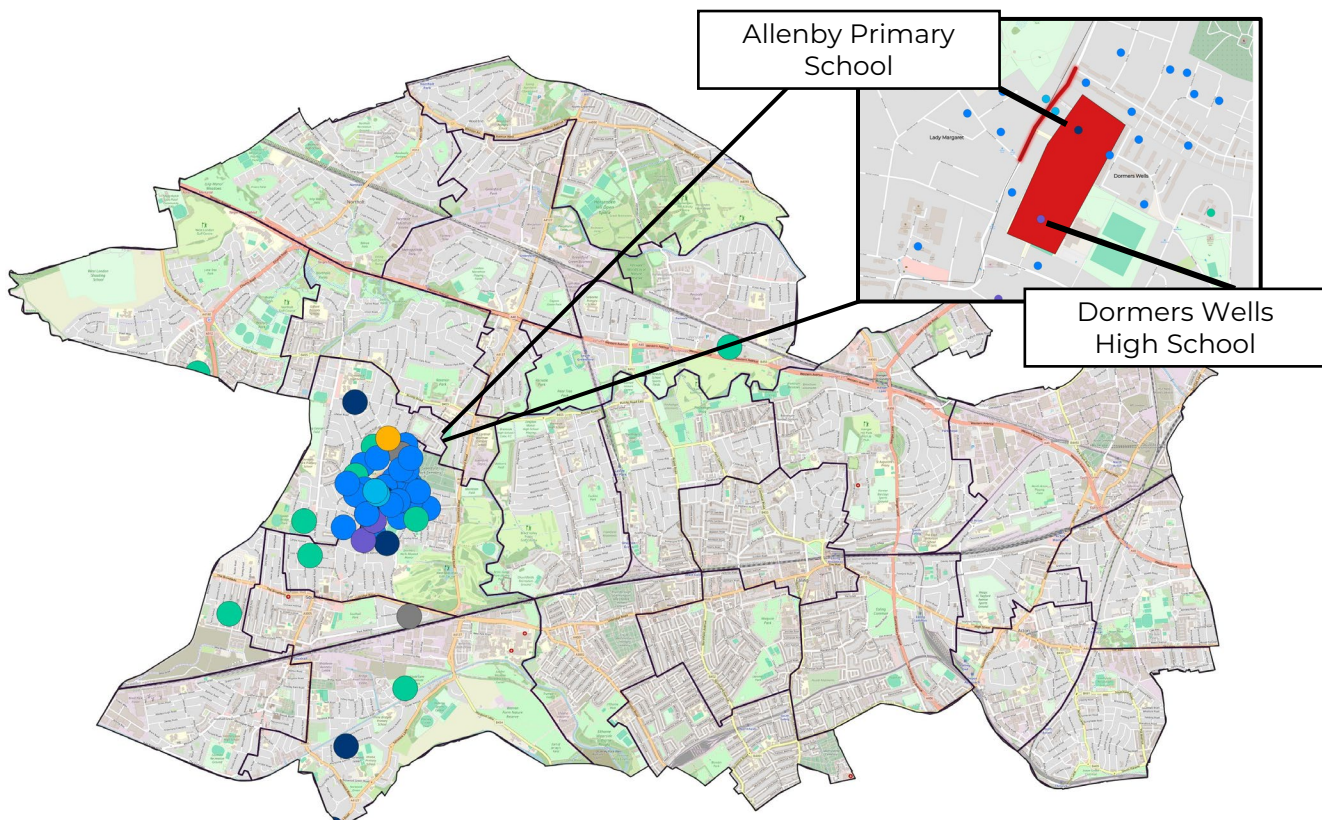
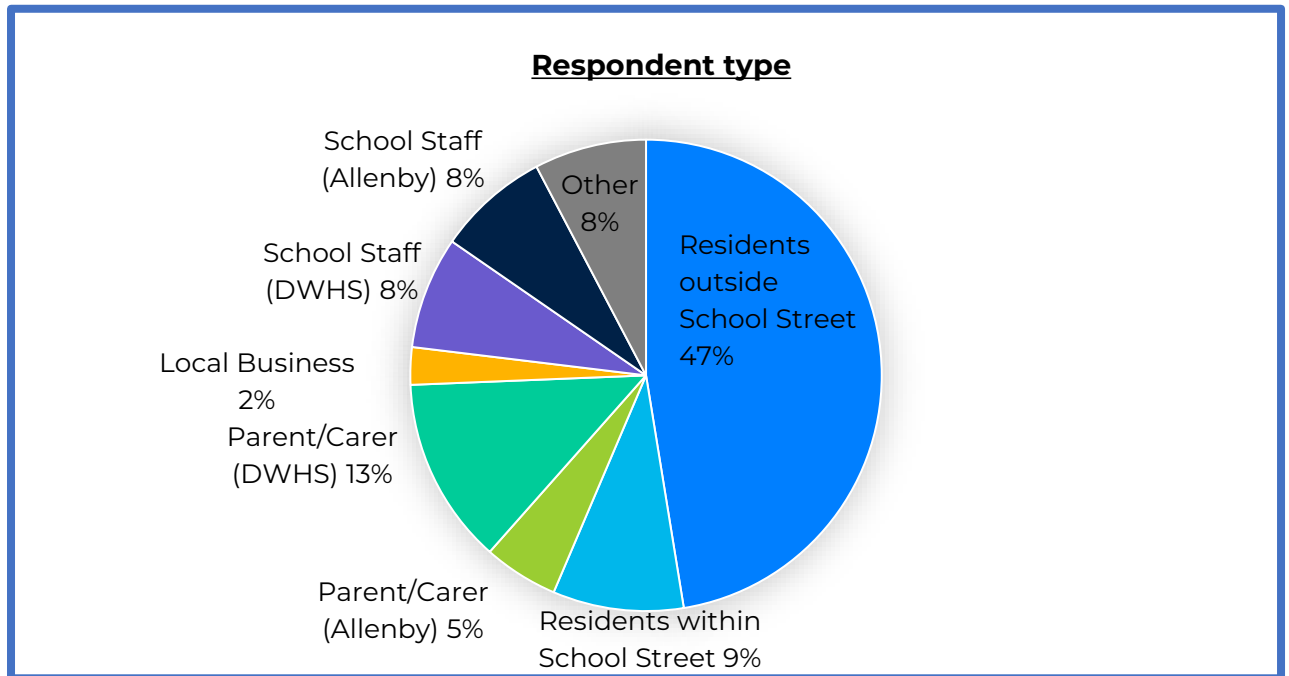


### Dormers Wells High School



## Respondent Demographics

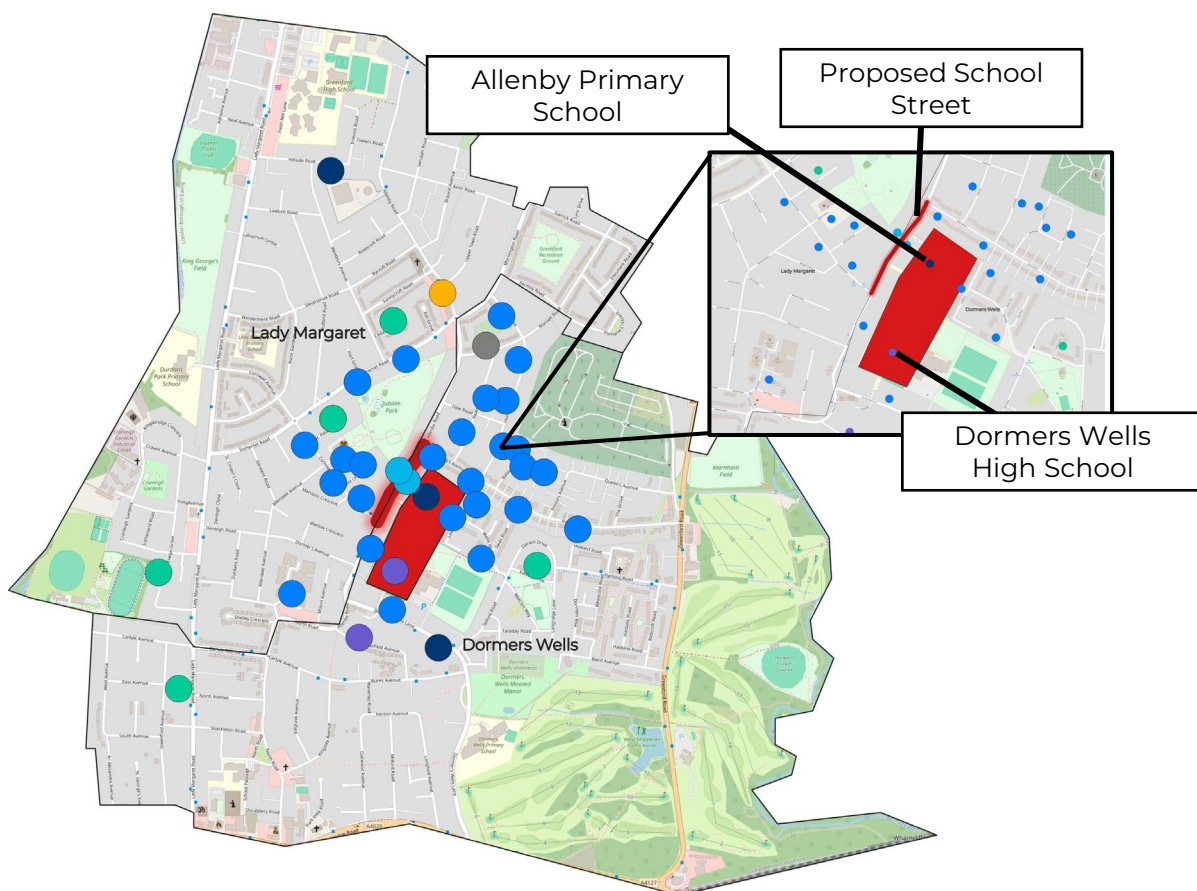
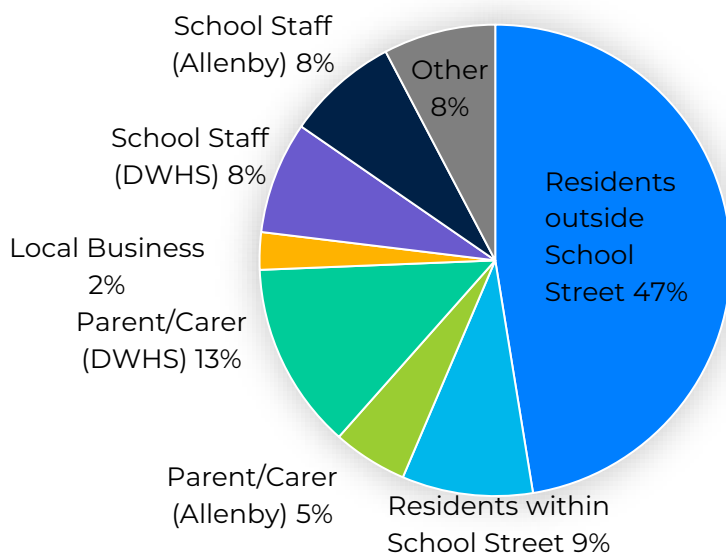
The survey received **78** responses, including **7** residents within the school street, **37** residents outside the school street, **10** parents from Dormers Wells High School (DWHS), **4** parents from Allenby Primary School, and **12** staff members from both schools.



## Respondent Demographics

The survey received **78** responses, including **7** residents within the school street, **37** residents outside the school street, **10** parents from Dormers Wells High School (DWHS), **4** parents from Allenby Primary School, and **12** staff members from both schools.

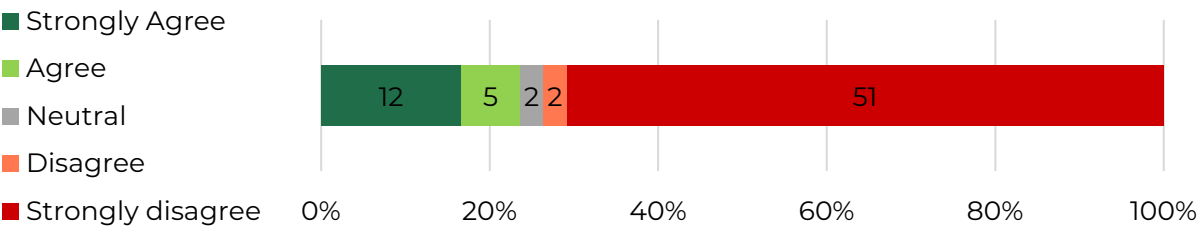
**Respondent type**



## Responses from Survey

### To what extent do you agree or disagree with the proposal for a School Street?

72 people responded to the question.



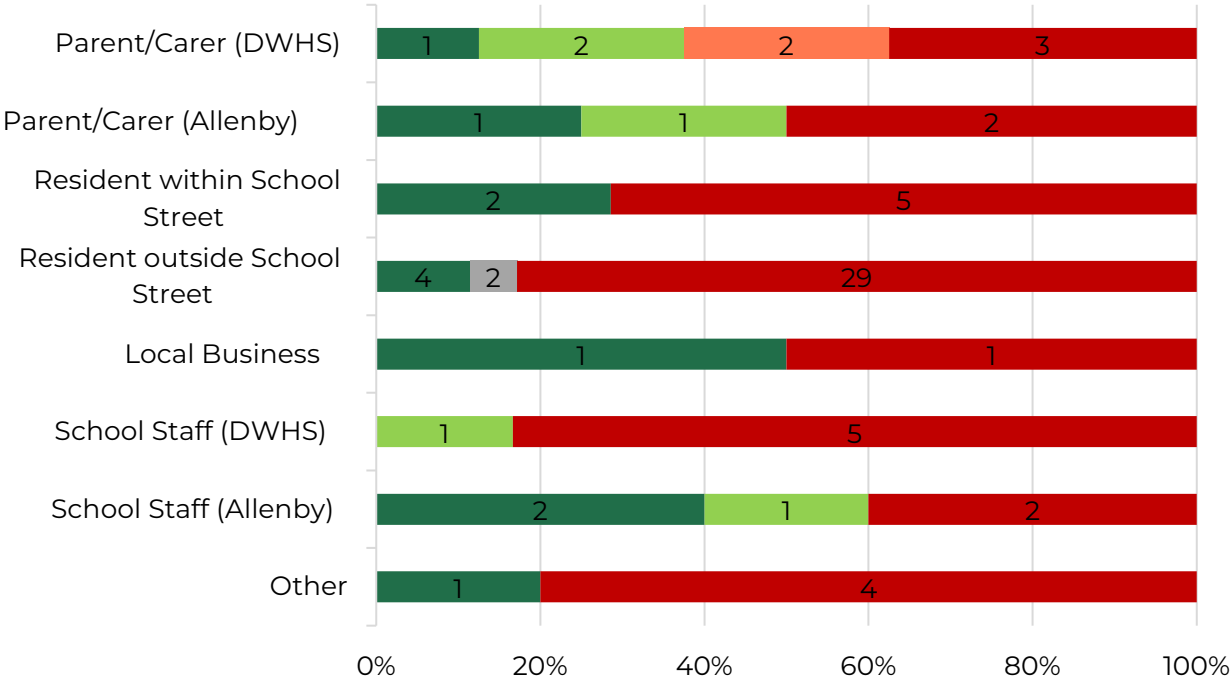
**60%** of the school staff in Allenby Primary School (out of **5**) and **17%** of the school staff in Dormers Wells High School (out of **6**) either agree or strongly agree with the School Street proposal.

- The main concern of school staff was about their access to school parking.

**71%** of the residents within the School Street (out of **7**) and **83%** of the residents outside the school street (out of **35**) strongly disagreed with the school street proposal.

- They were mainly concerned about the displacement of traffic to nearby roads.

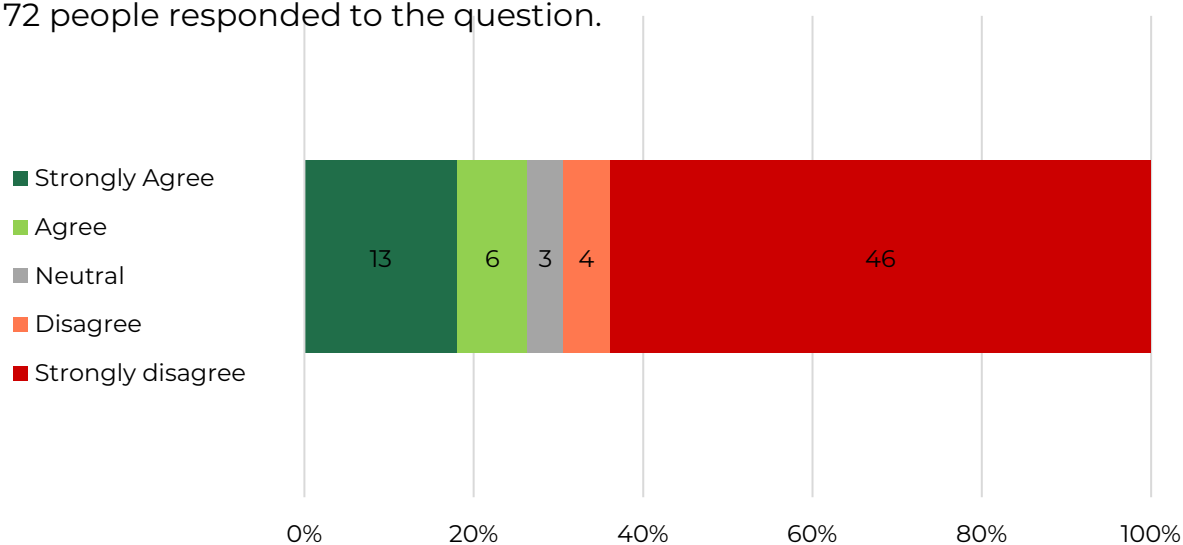
### Responses based on Respondent type



## Objectives

### To what extent do you agree or disagree with Ealing Council's transport ambition?

72 people responded to the question.



## What happens next

---

This report will help inform the decision-making process for the School Street scheme. The feedback gathered will be carefully considered alongside traffic data, safety assessments, and policy objectives.

Once a decision is made, residents, parents, and school staff will be informed of the outcome and any next steps.

If the scheme is approved, further details on implementation, monitoring, and potential adjustments will be shared to ensure a smooth transition.