



# Improving children's centre services

What do you think?

# Easy Read



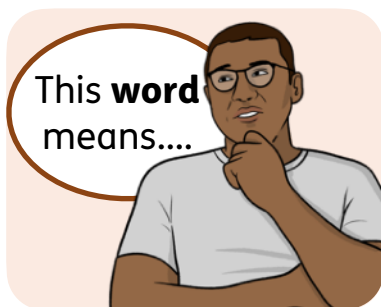
This is an Easy Read version of some information. It may not include all of the information but it will tell you about the important parts.



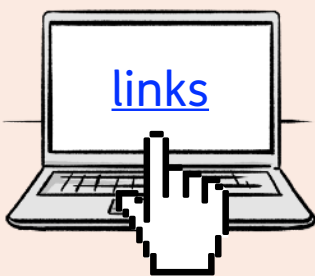
This Easy Read booklet uses easier words and pictures. Some people may still want help to read it.



Some words are in **bold** - this means the writing is thicker and darker. These are important words in the booklet.



Sometimes if a bold word is hard to understand, we will explain what it means.



[Blue and underlined](#) words show links to websites and email addresses. You can click on these links on a computer.

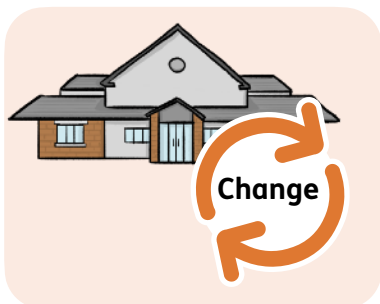
# What is in this booklet

About this booklet .....	4
Why we want to make changes.....	5
What we suggest.....	6
Where the children's centres are now .....	9
Where we suggest children's centres should be .....	11
Answers to your questions.....	12
Find out more .....	22

# About this booklet



Ealing Council wants to improve services for families with young children.

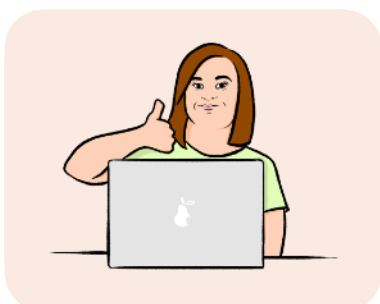


To do this, we suggest making some changes to children's centre services in Ealing.



This booklet will tell you about the changes we suggest.

## Tell us what you think



Please read this booklet and then answer the questions in our survey:  
[www.ealing.gov.uk/childrens-centre-consultation](http://www.ealing.gov.uk/childrens-centre-consultation)



We need your answers by Sunday, 27 April 2025.

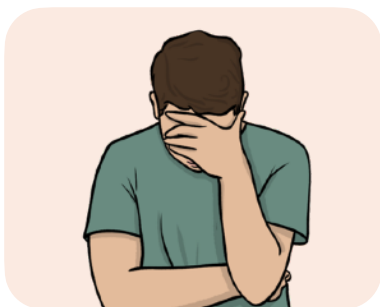
# Why we want to make changes



We want every child in Ealing to have the best start in life.



Children's centre services provide support for families, to help their children grow and develop.



But we know that not every family is getting the support they need with their young children.

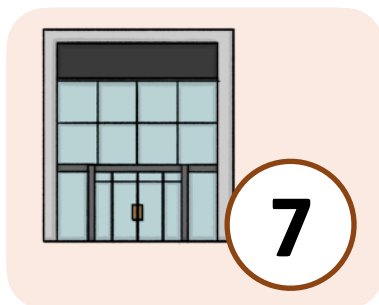


So we need to make changes that are fair for everyone so more families can get the support they need.

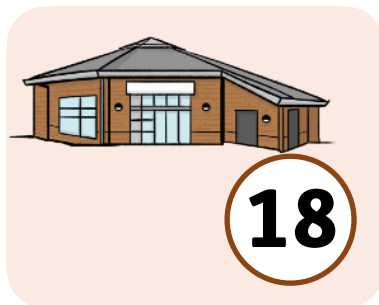
# What we suggest

## Children's centre services now

We have 25 centres providing children's services across Ealing:



- 7 main children's centres.



- 18 other places that are linked to the main centres.



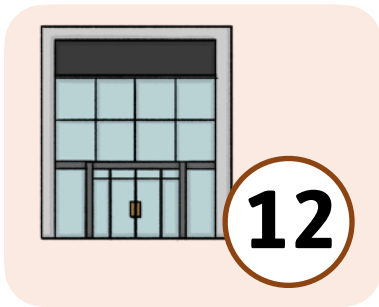
Some of the children's centres are open for a few hours a day or are closed for most of the week.



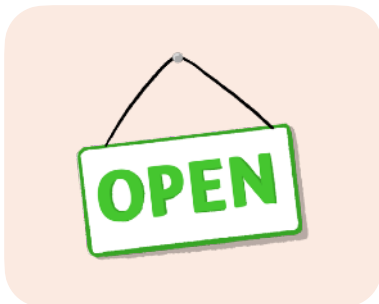
We are thinking about having fewer centres that are open for longer and also offer more support in community spaces.

# Changes to children's centre services

We suggest 4 changes:



1. Instead of 25 centres, we suggest having 12 main centres that provide more services for more families across Ealing.



2. The 12 centres would have longer opening hours to suit different families' needs.



3. We want to provide more services in local areas, in places like libraries and community centres.



4. We want to improve digital services so that more families can get support online.

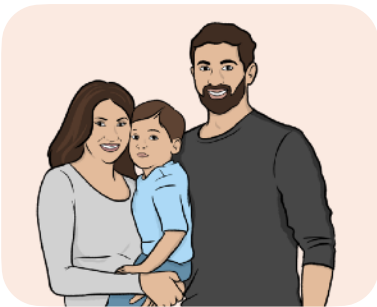
We think the changes we are suggesting will help to:



- Improve the children's centres and support that is available now.



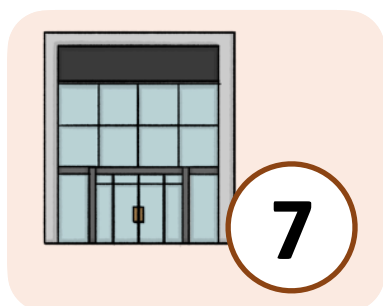
- Give families access to more services and support.



- Make sure more families can get the support they need.



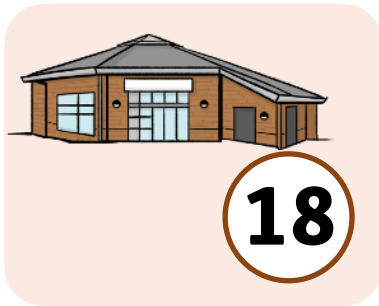
# Where the children's centres are now



## Main centres

At the moment, we have 7 main children's centres in:

1. Islip Manor
2. South Acton
3. Hanwell
4. Grove House
5. Perivale
6. Log Cabin
7. Academy Gardens

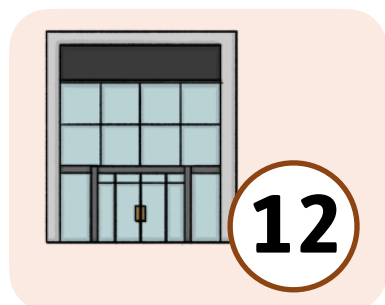


## Places linked to the main centres

At the moment, we have 18 places linked to the main children's centres:

1. Grange
2. Greenfields
3. Hathaway
4. John Perryn
5. Limetrees
6. Maples
7. Petts Hill
8. Southall Park
9. Jubilee
10. Acton Park
11. Copley Close
12. Dormers Wells
13. Havelock
14. Horsenden
15. Northolt Park
16. Windmill
17. Windmill Park
18. West Twyford

# Where we suggest children's centres should be



We suggest having 12 main children's centres in these places:

## **Acton**

1. South Acton
2. John Perryn
3. Acton Park

## **Ealing**

4. West Twyford
5. Grange

## **Greenford**

6. Horsenden

## **Hanwell**

7. Hanwell

## **Northolt**

8. Limetrees
9. Islip Manor

## **Perivale**

10. Perivale

## **Southall**

11. Havelock
12. Southall Park

# Answers to your questions



This section is about some of the common questions we have been asked, and our answers.

## **Why is the council looking into making changes to children's centres in Ealing?**



We want to get more families using our children's centres.



We want to provide the right services so that more families can get the support they need.

## **Is the council just making changes to save money?**



No. We want to make changes to improve children's services so that more families can get the support they need.

## **How will the council afford to make the changes?**



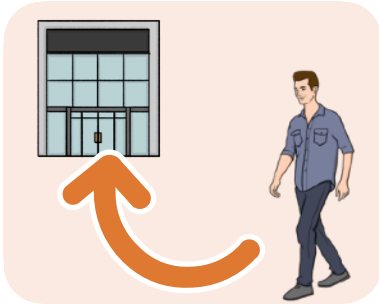
By making better use of our council buildings, we can save some money that can be used towards the changes.

## **Will the changes affect children in the future?**



We think the changes will have a positive effect in the future, because we will be improving services to help young children grow and develop.

## Will I have to travel further to use a children's centre?



Some families may need to travel further to their nearest children's centre.

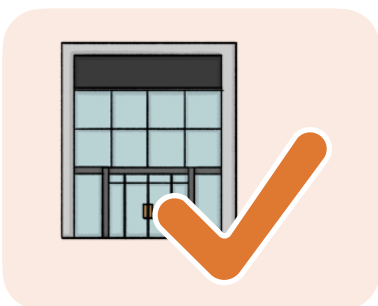


But we also want to provide more services in local areas, in places like community centres, close to where people live.

## Where will midwifery and post-natal sessions run if children's centres are closed?



**Midwifery** and **post-natal sessions** are services for pregnant mothers and families with newborn babies.



These services will carry on being provided at children's centres.

## Why do the council not make more people aware of children's centres?

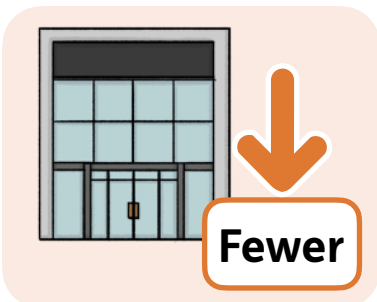


We are improving our computer and online systems to let more people know what services are available.

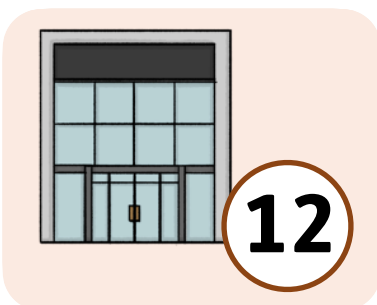
## Have these changes been tried anywhere else?



Other councils are looking into making changes to children's centre services.



Other areas, like Redbridge and Hillingdon, have fewer children's centres than Ealing.



Hillingdon is over twice the size of Ealing and manages with 12 centres.

## **What else has the council thought about doing to support the families who need it most?**

We want to:



- Improve digital support to help more families use services online.



- Work with local community groups to provide support to families.

## **Can the council support more families without closing children's centres?**



We think that our current centres make it harder for some families to use children's services.

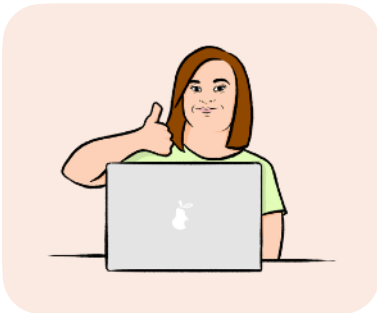




We want to make better use of the space in children centres.

By having fewer centres that provide more services and have longer opening hours we think more families will be able to get more support.

## **How can I say what I think about the changes?**



You can take part in the online survey:  
[www.ealing.gov.uk/childrens-centre-consultation](http://www.ealing.gov.uk/childrens-centre-consultation)



We will also be having face-to-face and online meetings to talk about the changes.

## **When will the council decide whether to make the changes?**



We will decide in May.



If we decide to make the changes, we will start to make them in June 2025.

## **How will having fewer children's centres help more families use children's services?**



Because we will be providing more services in the 12 centres, and more services in local places like schools and community centres.

## **How did the council decide where the new centres would be?**



We collected lots of information and looked into it carefully to make our decision.

## Will everyone be able to say what they think about the changes?



Yes. We will ask as many people as possible to tell us what they think about the changes.

## Which of the 12 centres will focus on support for children with SEND?



**SEND** stands for **S**pecial **E**ducational **N**eeds and **D**isabilities. Children with SEND need extra support to help them grow and learn.



Support for children with SEND will be an important part of the services available at all 12 children's centres.

## How will the council make sure every family is getting the support they need?



By providing more services in local places close to where people live.

## What will happen to the centres that get closed?

We will use the buildings for other things like:



- Nurseries.



- SEND support.



- Mental health and youth services.

## How will the council provide information about the changes in a way that everyone can understand?

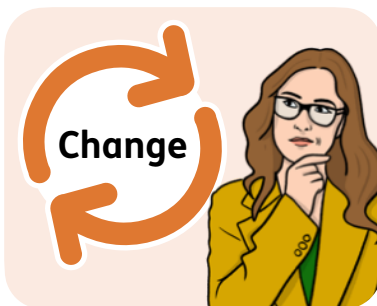


We have written the main information in plain English and provided this Easy Read version.



We will also provide information in other languages.

## Will the changes mean council staff have to change jobs or learn new skills?



We will know more about this if we decide to make the changes.



We will always carry on helping our staff to improve and develop.

# Find out more

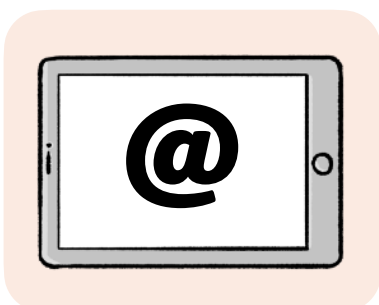


You can look at our website here:  
[www.ealing.gov.uk/childrens-centre-consultation](http://www.ealing.gov.uk/childrens-centre-consultation)



You can contact us by:

- Phone: 020 8825 5588



- Email: [children@ealing.gov.uk](mailto:children@ealing.gov.uk)

This Easy Read booklet was produced by [easy-read-online.co.uk](http://easy-read-online.co.uk)  
The booklet includes illustrations based on images licensed from Shutterstock.