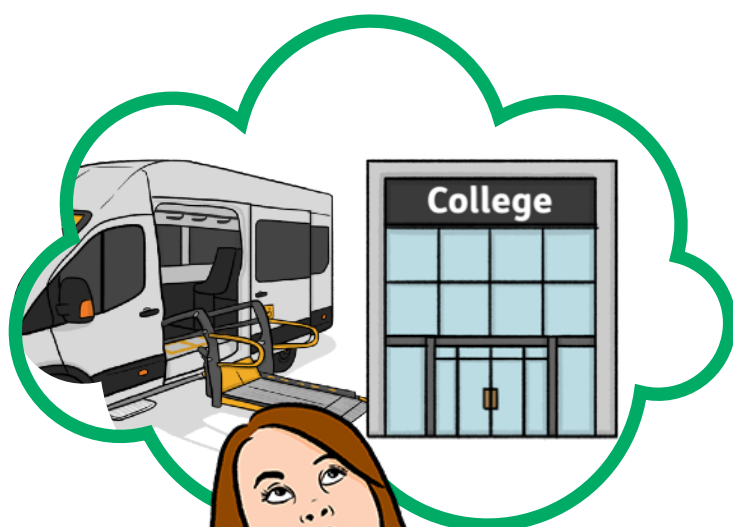


Help to travel to school, college or training

What do you think?



Easy Read



This is an Easy Read version of some information. It may not include all of the information but it will tell you about the important parts.



This Easy Read booklet uses easier words and pictures. Some people may still want help to read it.



Some words are in **bold** - this means the writing is thicker and darker. These are important words in the booklet.



Sometimes if a bold word is hard to understand, we will explain what it means.



[Blue and underlined](#) words show links to websites and email addresses. You can click on these links on a computer.

What is in this booklet

About this booklet	4
Our travel policy	5
Why we are asking what you think	8
What we want the policy to do.....	10
Our policy now	13
Our new policy	15
Who we are asking	18
How to tell us what you think	21
What happens next	23
Making fair decisions	25
How to tell us what you think	26
Find out more	27

About this booklet



This booklet is from Ealing Council.



We want to change how we help children and young people travel to school, college or training.



We think that the changes will help young people do more.



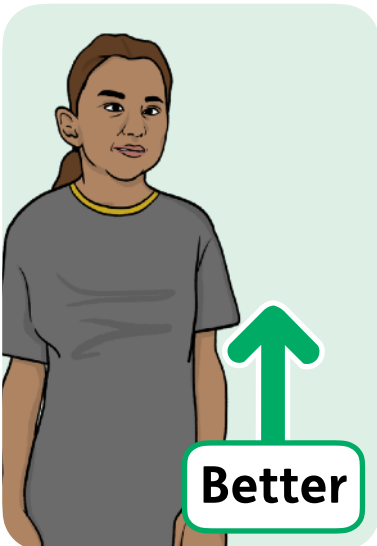
We want to know what you think before we make the changes.

Our travel policy



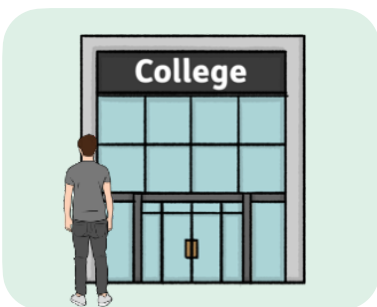
Our travel **policy** is for children and young people aged 16 and above.

Policy is the way we do things.



We think we can make things better for young people in Ealing, especially those with **SEND**.

SEND stands for **S**pecial **E**ducational **N**eeds and **D**isabilities. Children and young people with SEND are aged 0 to 25 and need some extra support to learn and grow.



We want to keep helping young people with SEND to get to school, college or training.

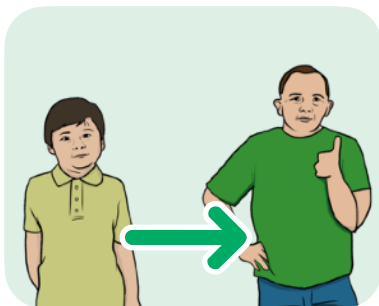


We know that without our help some young people would not be able to go to school, college or training.

We have looked at policies from other councils and think that we can make our policy better, so that we:



- Help children and young people in a better way.



- Help young people get ready for adult life.



- Get the most out of the money we have.



So we are making a new policy that:

- Looks at what each young person needs.



- Gives more choices for travel help.



Helping young people in Ealing learn to travel is an important part of helping them be ready for adult life.



We want to hear from everyone in Ealing, like children and young people, parents, teachers, health and social care staff and people living in Ealing.

Why we are asking what you think



We have to write a report about our travel policy each year.



If we want to make any changes to the policy, we have to ask people what they think.



We want to make sure we are helping young people get to and from school, college or training in the best way.

In this booklet, young people means:



- People aged over 16 who are the age to go to sixth form, and

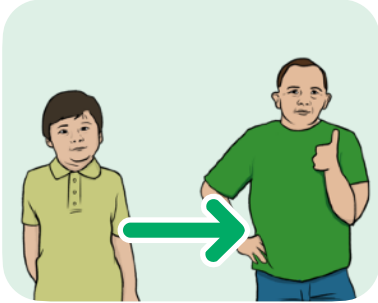


- People aged up to 25 who have a **EHCP**, and who started their course before they were 19.

An **Education Health and Care Plan (EHCP)** is an official document that agrees what support a child or young person needs, and what services they should get.

What we want the policy to do

We want the policy to:



- Help young people get ready for adult life.



- Help young people with SEND spend more time with other young people.



- Help young people do more for themselves.



- Give young people more choice about how they spend money.

We also want the policy to:



- Be fair to everyone.



- Help look after the **environment**.

The **environment** is where we live. It includes the land, the sea, the air and everything that lives in and on it.



- Be a good use of our money.

The new policy will help young people learn skills like:



- Staying safe, especially on the roads.



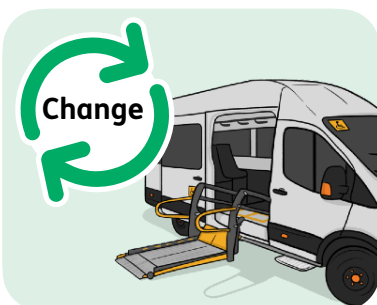
- Making decisions about money.



- Getting to know the area they live in.



- What to do if something goes wrong.



The new policy will mean that young people can change their plans more easily.

Our policy now

When we make decisions about who to help with transport, we think about:



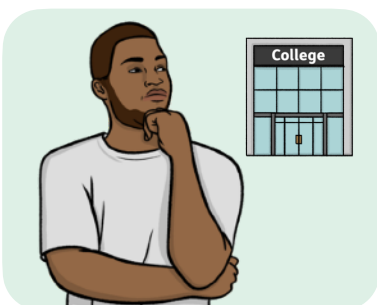
- If the young person has difficulty walking or using buses or trains because of their special educational needs or disability.



- If the young person has a problem with their body or health that stops them from using buses or trains, like needing a wheelchair.

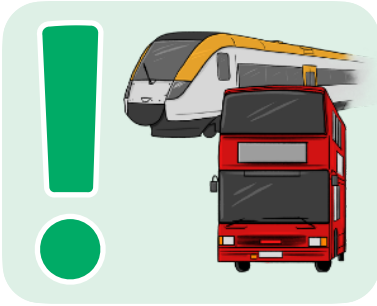


- If the young person's feelings or behaviour make it hard for them to use buses or trains.



- How far and how difficult the journey to school, college or training is.

We also think about:



- If the young person might be in danger if they use buses or trains.



- If the young person could travel to school, college or training on their own with the right training and support.



We provide transport for a lot of young people.

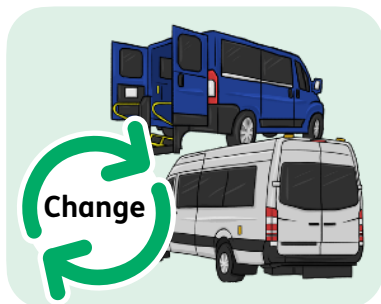


The policy does not give enough information to parents and young people about different types of transport.



So parents and young people do not know about the transport we offer.

Our new policy



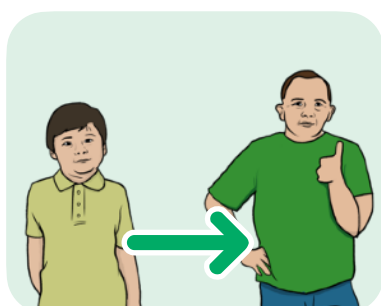
We are thinking about changing how we decide who to help with travel.



We will help young people who need a lot of help to travel because of their disabilities.



We will help young people learn to travel themselves by giving them travel training.



This is part of helping them get ready for adult life.



We are thinking about 3 choices for the new policy.

Choice 1



Keep the policy the same as it is now.

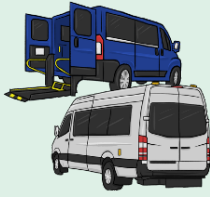
Choice 2



We would only give travel help to young people who need a lot of support because of their disabilities and health.



We would train young people to travel on their own, if they can.



Special cases

We would only give transport from the council in some special cases.



We would decide how much families would have to pay for the help we give them.

Choice 3



We would give young people money for travel help, and let them decide how to spend it.



If a young person needs our help to travel, we would look at what they need.



We would decide how much families would have to pay for the help we give them.

Who we are asking



We are asking everyone in Ealing about our ideas for the new policy.

We really want to hear from people like:



- Parents, carers, children and young people.



- People who work in schools and colleges.



- People who are in charge of schools and colleges.

We also really want to hear from:



- People who work in care and health services.



- Groups for parents and carers, like Ealing Parent Carer Forum, Contact, SENDIASS and Mencap.

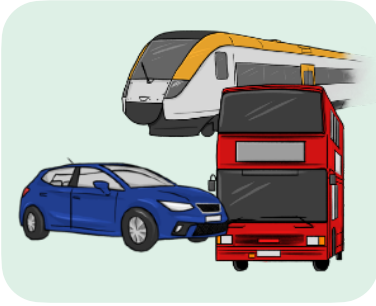


- Councillors.



- People who live in Ealing and pay tax.

We will talk a lot with young people with SEND to understand:



- How they get to school, college or training.



- What they want to do when they are older.



- What helps them to get to school, college or training safely, on time and ready to learn.



Parents, carers and people who live in the area can come to meetings to talk to us.

How to tell us what you think



We are going to ask questions about our policy online.



We also want to hear any other ideas you have about how young people get to school, college or training.



You can find the questions on our website and the Ealing Local Offer website.



You can also ask for a paper copy or an Easy Read copy.



We are also going to have events where people can talk about the ideas.

You can find out about the events on:



- Our website

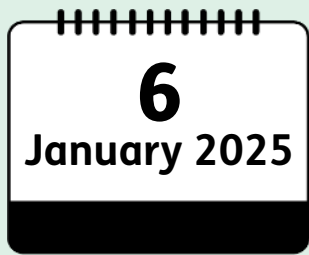
www.ealing.gov.uk



- The Ealing Local Offer website

www.ealingfamiliesdirectory.org.uk/kb5/ealing/directory/localoffer.page?localofferchannel=0

What happens next



We are asking people what they think for 6 weeks, from 6 January 2025.



After that, we will look at all the answers and write a report for the people who make decisions for the Council.



They will make a decision in April 2025.



If they make any changes to the policy, we will put them on our website by May 2025.

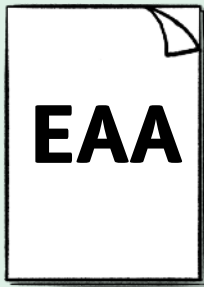


We will start any agreed changes on 1 September 2025.



We will help young people and their families with the changes if we need to.

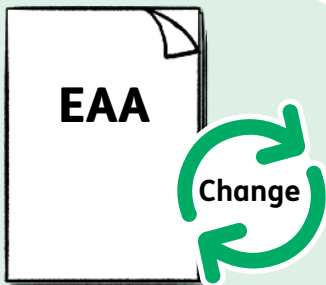
Making fair decisions



We have written a report called an **Equalities Analysis Assessment (EAA)**.



The **EAA** looks at the policy and makes sure it is fair to all different groups of people in Ealing.



We will change the EAA after we have listened to what everyone thinks.



The EAA will help us decide on any changes to the policy.

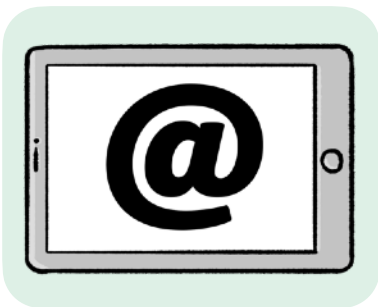
How to tell us what you think



Please read this booklet before you answer the questions.



It is better for us if you answer the questions online, if you can.



If you would like a paper copy of the questions, please email us:

senta@ealing.gov.uk



You must answer the questions by 5.00pm on Wednesday, 19 February 2025.

Find out more



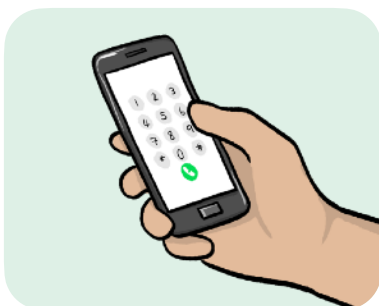
You can look at our website here:

www.ealing.gov.uk

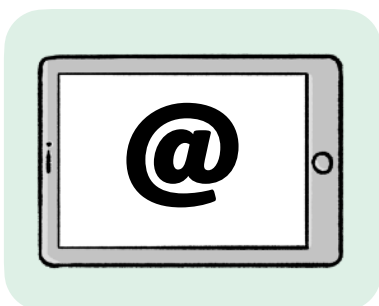
You can contact us by:



- Post:
Ealing Council
Perceval House
14/16 Uxbridge Road
Ealing
W5 2HL



- Phone: 020 8825 5000



- Email: senta@ealing.gov.uk

This Easy Read booklet was produced by easy-read-online.co.uk