

Ealing Council Infrastructure Funding Statement

Reporting period:

From 1 April 2023 to 31 March 2024



Contents

Introduction	2
What is a Section 106 (S106) agreement.....	2
Agreements in the OPDC administrative area	3
Information by town	3
Summary.....	4
Section 1. Total amount of MCIL collected	5
Section 2. Total amount of S106 received in year	5
Table 1: Total S106 received in year 2023/24 by town.....	5
Section 3. Value of agreements completed in 2023/24	5
Table 2a: Total value of S106 contributions agreed by type	6
Table 2b: Total value of S106 contributions agreed by town	6
Table 3 : Summary list of non-monetary obligations agreed in year	7
Section 4. Allocation of S106 money.....	8
Table 4a: Total amount S106 allocated in year by type.....	8
Table 4b: Total amount S106 allocated in year by town	8
Table 4c: List of projects with S106 allocated in year.....	9
Section 5. Spend of S106 during reporting year	12
Table 5a: S106 spend in year by project type	12
Table 5b: S106 spend in year by town	12
Table 5c: List of projects with S106 spend in year	13
Section 6: S106 allocated but not spent during the year.....	16
Table 6: S106 allocated but not spent during the 2023/24	16
Appendix A: Case studies of projects delivered through S106 funding	18

Introduction

The Community Infrastructure Levy (CIL) Regulations 2010 (as amended) require all local planning authorities that issue a CIL liability notice or enter into Section 106 (S106) planning obligations, during a reporting year, to publish an annual Infrastructure Funding Statement (IFS) by 31 December each year, for the preceding financial year, 1 April to 31 March.

For the monitoring year spanning 1 April 2023 to 31 March 2024, the council did not charge CIL. Therefore, this IFS only reports details of S106 planning obligations.

The council collects MCIL on behalf of the London Mayor. This is passed quarterly to Transport for London (TfL), who use the money to fund the delivery of regional transport infrastructure such as the Elizabeth Line. The council retains 4% of the MCIL receipt to cover administrative costs.

The purpose of the IFS is to provide public information on collection, allocation and expenditure of developer contributions to provide transparency and accountability.

What is a Section 106 (S106) agreement

Planning obligations under Section 106 of the Town and Country Planning Act 1990 (as amended), commonly known as S106 agreements, are legal obligations which assist in mitigating the impact of unacceptable development, to make the development acceptable in planning terms. In general, they are intended to deal with impacts of the development without which the proposal should not be given planning permission. They are negotiated and agreed between the council and a developer.

S106 contributions must be used in accordance with the terms of the legal agreement, which often specify what can be funded and where the money can be spent; some are time limited.

S106 obligations can be both financial and non-financial and can relate to on-site provision, such as the provision of affordable housing, or off-site provision, such as financial payments, to be used to fund a specific piece of infrastructure. They can be used to control operations, such as the removal of car parking rights.

Planning obligations may only be agreed if they meet the three statutory tests that demonstrate they are necessary to make a development acceptable in planning terms.

The 3 tests are:

- necessary to make the development acceptable in planning terms
- directly related to the development
- fairly and reasonably related in scale and kind to the development

Agreements in the OPDC administrative area

It is necessary to note some agreements relate to developments which are geographically within the boundary of the London Borough of Ealing, but which fall under the jurisdiction of the Old Oak and Park Royal Development Corporation (OPDC), which was established in 2015. OPDC is the Local Planning Authority (LPA) for its administrative area, meaning it is responsible for plan making and taking decisions on planning matters within its administrative boundary.

When OPDC was first established in 2015, a scheme of delegation was agreed, which meant some large planning applications, located within both OPDC and London Borough of Ealing boundaries, would continue to be decided by the council. Consequently, the council manage the receipt and collection of S106 monies associated with these applications, on behalf of OPDC. The initial scheme of delegation ended on 31 March 2024 and all planning applications within the OPDC area are now decided by OPDC.

For the planning applications which were delegated to the council to determine, the council was responsible for leading on negotiating the S106 agreement. OPDC is a signatory to all of these S106 agreements, and is the LPA with final responsibility for deciding how the received planning contributions are spent.

There is a separate project funding approval governance process for spending S106 funds collected by the council from developments in the OPDC area. All project funding proposals are presented to, and assessed by, the Planning Officers Advisory Group (POAG). This group, which meets quarterly, comprises representatives from each of the councils which the OPDC area overlays, and is chaired by OPDC.

OPDC reports separately on all funds received from developments in its administrative area, within its own Infrastructure Funding Statements. The council provides data to support this. The information relating to OPDC S106 receipts, allocation and spend is not duplicated within this IFS document.

Information by town

The council takes a 'town-based' approach to recording S106 agreements. This assists services to identify more easily what funds are available for spend in each area. Each S106 agreement is allocated a unique code, with the first letter of the town at the beginning. For example: A = Acton; S = Southall.

Summary

Section	Details	Amount	Tables
1	Total amount MCIL collected in year and passed to Transport for London.	£5,845,228	No table.
2	Total amount of S106 received in year	£11,510,227.89	Table 1
3	Total number of S106 agreements signed in the year	58	No table
	Total value of signed S106 agreements in year	£11,899,763	Table 2a & 2b
	Total number of non-monetary obligations agreed in year	76	Table 3
	Total number of affordable housing units secured as onsite provision in year	561	No table
	Total number of affordable housing units secured as an offsite provision in year	0	No table
4	Number of projects allocated S106 funds in year	82	Table 4c
	Total amount S106 allocated in year	£16,385,910.82	4a & 4b
5	Number projects funded (partially or fully) by S106 spend in year	72	Table 5c
	Total amount of S106 spend in year	£11,483,843.36	Table 5a & 5b
6	Amount of S106 allocated but not spent within the reporting year	£11,207,632	No table
	Number of projects with S106 allocated but not spent within the reporting year	52	Table 6
Appendix A	Case study examples of projects delivered with S106 funding		

Section 1. Total amount of MCIL collected

The total amount of MCIL collected within the reported period totals £5,845,228.

Section 2. Total amount of S106 received in year

The total amount of S106 money received from planning obligations during the reported year was £11,510,227.89.

Table 1: Total S106 received in year 2023/24 by town

Towns	Sum of amounts Received £
Acton	3,925,237.96
Ealing	2,598,955.63
Greenford	2,913,589.88
Hanwell	8,838
Northolt	1,232,787.84
Perivale	4,377.96
Southall	826,440.62
Grand total	11,510,227.89

Section 3. Value of agreements completed in 2023/24

A total of 58 new S106 agreements were signed and sealed in the reported year. The total value of S106 financial contributions, secured in signed agreements, in the reported year was £11,899,763.

The new signed S106 agreements contained a total of 76 non-financial obligations, including securing the provision of 561 onsite affordable housing units.

Table 2a: Total value of S106 contributions agreed by type

Type of contribution	Total value of contributions agreed in year £
Air quality monitoring	186,462
Carbon offsetting	2,729,298
Controlled parking zone	220,000
Education	1,648,799
Energy monitoring	80,127
Health	2,367,044
Highways and transport	1,641,572
Housing	730,831
Parks	1,745,130
Skills and employment	288,500
Travel plan	24,000
Town centres	238,000
Grand total	11,899,763

Table 2b: Total value of S106 contributions agreed by town

Town	Total value of contributions agreed in year £
Acton	10,558,395
Ealing	449,607
Hanwell	0
Northolt	541,787
Southall	298,823
Greenford	0
Perivale	51,151
Grand total	11,899,763

Table 3: Summary list of non-monetary obligations agreed in year

Obligation type	Number of agreed obligations
Affordable housing - LA/SR - provision of units	1
Affordable housing - provision of units (on site)	4
Affordable housing - student affordable housing	1
Affordable housing - viability review	1
Employment - apprentice scheme	5
Employment - employment opportunities	1
Employment and regeneration – affordable workspace	1
Highways - car club	5
Highways - CPZ	10
Highways - travel plan monitoring	3
Low car housing scheme	44
Grand total	76

Section 4. Allocation of S106 money

S106 money was allocated to a total of 82 distinct infrastructure, skills and training, and monitoring projects in the reported year. The total value of S106 money allocated in the reported year was £16,385,910.82.

Table 4a: Total amount S106 allocated in year by type

Type	S106 Allocations £
Air quality monitoring	48,790.75
Carbon offsetting	138,348
Controlled parking zone	30,163.96
Education	9,948,999.45
Energy monitoring	238,148.81
Health	2,377,356.27
Highways and transport	273,210.89
Housing	1,346,482
Parks	1,037,168.93
Regeneration	10,108.18
Safer communities	10,600
Skills and employment	926,533.58
Grand total	16,385,910.82

Table 4b: Total amount S106 allocated in year by town

Town	S106 Allocations (£)
Acton	5,370,555.15
Ealing	3,289,162.67
Greenford	2,389,629.23
Hanwell	752,119.62
Northolt	814,599.56
Perivale	999,023.09
Southall	2,770,821.50
Grand Total	16,385,910.82

Table 4c: List of projects with S106 allocated in year

Project name	Total allocated in year (£)
On-site energy monitoring projects	238,148.81
East Acton, John Perryn, Ellen Wilkinson school expansion	529,440.62
CPZ East Acton Lane	11,833.96
Acton CCTV	10,600
Act for Ealing climate hub	30,699
Acton Gardens Primary School expansion and refurbishment	772,986.98
Acton Park playground refurbishment	32,342.04
Air quality monitoring and action planning	48,790.75
Ark Acton Academy expansion	201,075.37
Beaconsfield Primary School expansion	236,538.54
BEAM: supporting homeless residents into employment	44,520
Paradis Fields - beaver introduction	45,000
Belvue High School expansion	21,931
Bixley Fields improvements	22,500
Montpelier Park planting improvements	7,500
Churchfield Road highways improvements for bus accessibility and active travel	32,277
London Climate Action Week	6,108
Carbon literacy training	7,450
Climate action staff funding	31,874
Community climate action grants	26,085
Bollo Lane pedestrian, cycle and road safety measures	68,995.47
Dean Gardens affordable housing	1,346,482
Dean Gardens play refurbishment	1,478.53
Drayton Green playground refurbishment	31,073.50
Ealing Broadway CPZ improvements	18,330
East Acton Community Project	113,874.32
Ealing Central Sports Ground playground refurbishment	175,000

Project name	Total allocated in year (£)
Elthorne Park High and St Marks works	292,004.21
Elthorne Park High School expansion	139,105.38
Elthorne Park lighting works	44,018
ESOL training for residents	139,908.04
Food Partnership Project	32,132
Ruislip Road pedestrian and cycle improvements	35,000
Glade Lane wetland works	15,073.22
Greenford High School expansion	293,719.39
Employment and Skills CRM system	9,087.53
Havelock Estate tree planting programme	5,920.50
Corfton Road Surgery and Central Ealing Hub	726,655.62
Hillcrest Surgery relocation refurbishment	1,577,821.15
Northolt health hub	42,485.30
Horsenden Hill play improvements	4,244
Beaconsfield Primary School - heating pipework	133,803.77
Ellen Wilkinson School lighting replacement	284,545.12
Ellen Wilkinson School toilet refurbishment	19,690.46
John Perryn Primary School toilet refurbishment	12,670
West Acton Primary School works	15,987.84
John Chilton School expansion	2,080,965.65
Learn Ealing apprentices	78,018.15
Learn Ealing programmes removing barriers to employment	57,848.63
Learn Ealing training for residents	204,780
Learning zones training for residents	54,825
Southall Manor House grounds refurbishment	50,000
Montpelier Primary School expansion	23,674.38
Northolt Park refurbishments	128,390.20
Perivale Primary and Brentside High expansion	215,042
Pitshanger Park refurbishments	17,406.33
Trinity Way highways improvements	84,932.28
Ravenor Park refurbishments	22,156.19

Project name	Total allocated in year (£)
Rectory Park playground refurbishment	146,778.22
Armstrong Way and Windmill Lane highways improvements	27,006.14
Healthcare provision	30,394.20
Acton school pedestrian cycle road safety measures	25,000
Schools PV project co funding	4,000
St Ann's School SEN expansion	134,747.92
SEN expansion programme and high priority condition works	90,918.34
South Acton Estate tree planting programme	84,424.74
Southall Broadway tree planting programme	29,274.56
Southall Park outdoor gym	26,200.80
Southall Park running track	5,000
Springfield playground improvements	20,000
St Ann's School relocation and expansion	2,299,670.60
St John's Primary School redevelopment	238,614.99
St Mark's Primary School expansion	40,486.63
Ellen Wilkinson School expansion	83,967.92
Tree planting programme	81,917.27
Ealing Broadway tree planting programme	20,670
Villiers High School expansion	1,606,233
Walpole Park playground and walled garden	20,800.83
West Twyford Primary School expansion	77,413.20
Work Ealing pathways program	56,499.65
Work Ealing service funding	278,546.58
Work Ealing youth offer	2,500
Grand Total	16,385,910.82

Section 5. Spend of S106 during reporting year

S106 money was spent on a total of 72 distinct infrastructure, skills and training, and monitoring projects in the reported year. The total value of S106 money spent in the reported year was £11,483,843.36.

Table 5a: S106 spend in year by project type

Type	S106 Spend (£)
Air quality monitoring	17,655.53
Carbon offsetting	1,617,503.58
Controlled parking zone	40,222.00
Education	1,722,951.06
Energy monitoring	97,813.68
Health	1,744,920.22
Highways and transport	1,300,346.22
Housing	2,497,952.74
Parks	1,062,374.98
Regeneration	308,381.00
Skills and employment	1,073,722.35
Grand Total	11,483,843.36

Table 5b: S106 spend in year by town

Town	S106 Spend (£)
Acton	3,497,665.52
Ealing	5,167,665.53
Greenford	850,663.39
Hanwell	51,383.00
Northolt	146,754.71
Perivale	278,941.79
Southall	1,490,769.42
Grand Total	11,483,843.36

Table 5c: List of projects with S106 spend in year

Project Name	Total Spent in year (£)
School energy surveys	565.18
Act for Ealing climate hub	30,699
Former Southall Market Car Park affordable housing	899,115.19
Air quality monitoring and action planning	17,655.14
Avenue Road playground improvement	61,577.74
BEAM: supporting homeless residents into employment	44,520
Paradis Fields beaver introduction project	45,000
Bixley Fields improvements	8,516.14
Bromyard Avenue highways and public realm improvement	146,614.16
Buckingham Avenue affordable housing	148,902.55
London Climate Action Week	6,108
Carbon literacy training	7,450
Climate action staff funding	31,874
Community climate action grants	26,085
Dean Gardens affordable housing	1,449,935
Grand Union Avenue highways junction improvements	83,179
Ealing Broadway CPZ improvements	40,222
Ealing Broadway liveable neighbourhood	600,000
Ealing Central Sports Ground playground refurbishment	90,031.77
Elthorne Park lighting works	44,018
ESOL training for residents	139,908.04
Food Partnership Project	32,132
Glade Lane wetland works	8,516.14
Greenford Station and Oldfield Lane highway works	52,200.01
Gurnell Park improvements	427,862.95
Employment and Skills CRM system	9,087.53
Churchfield Surgery improvement	10,426.52
Healthcare provision – funds paid to ICB	128,520.89
Guru Nanak Medical Centre improvements	318,502.12

Project Name	Total Spent in year (£)
Gordon House Surgery & Greenford Avenue Family Practice improvements	141,882.86
GUV Health Centre expansion	259,861.12
Meadow View Surgery, The Grove Medical Practice, Barnabas Medical Centre, West End Surgery improvements	600,000
Medical Centre at Beaconsfield Road and Cecil Road improvements	12,567.68
Mill Hill, Horn Lane, Crown Street and Churchfield Surgeries improvements	273,159.03
Beaconsfield Road, Trinity Road and Woodlands Road highways works	50,400.80
Northfields flood alleviation highways works	33,500
Horsenden Hill improvements	25,395.85
Horsenden Hill play improvements	4,156.45
Beaconsfield Primary School heating pipework	964.78
Ellen Wilkinson School lighting replacement	284,545.12
Ellen Wilkinson School toilet refurbishment	19,690.46
John Perryn Primary School toilet refurbishment	12,670
West Acton Primary School works	15,987.84
Learn Ealing apprentices	78,018.15
Learn Ealing employability project	156,870
Learn Ealing programme removing barriers to employment	124,658.98
Learn Ealing Training for residents	204,780
Learning Zones training for residents	54,825
Leisure Centre retrofit and decarbonisation	1,478,590.40
Southall Manor House grounds refurbishments	47,434.28
New Gen Festival - creative industries careers activities sessions for young people	4,490
North Ealing tree planting programme	21,212.84
On-site Energy Monitoring	97,813.68
Pitshanger Park refurbishments	5,988.34
Ravenor Park refurbishments	12,595
Rectory Park playground refurbishment	146,754.71

Project Name	Total Spent in year (£)
Schools PV project co funding	4,000
South Acton Bollo Bridge traffic calming and other highways improvements	96,726.18
Southall foot and cycle bridge	225,202
Southall Park outdoor gym	18,715.38
Southall Park running track	5,000
Southfield Rec tennis court refurbishment	45,813.22
Spark: Working with schools to create work experience for young people	24,999
St Ann's School relocation and expansion	1,199,643.03
Dickens Yard streetscape, pedestrian and cycle improvements	177,620
Uxbridge Road safety improvements	143,285.07
Villiers High School expansion	189,449.83
Walpole Park playground and walled garden	20,800.83
Woodlands Mews planting and boundary improvements	22,985.34
Work Ealing pathways program	56,499.65
Work Ealing service funding	172,566
Work Ealing youth offer	2,500
Grand Total	11,483,843.36

Section 6: S106 allocated but not spent during the year

Of the 82 projects allocated S106 funding during the reported year, 52 had unspent funds remaining at the end of the reporting period. The total of the unspent funds was £11,207,632.

Table 6: S106 allocated but not spent during the 2023/24

Infrastructure	Unspent £
Acton CCTV	10,600
St John's Primary School redevelopment	238,614.99
St Ann's relocation and expansion	755,698.27
Acton Gardens Primary School expansion and refurbishment	772,986.98
Springfield playground improvements	20,000
Acton Park playground refurbishment	32,342.04
Tree planting programme	81,917.27
Ealing Broadway tree planting programme	20,670
Northolt Park refurbishments	128,390.20
Southall Manor House grounds refurbishments	2,565.72
Drayton Green playground refurbishment	31,073.50
Montpelier Park planting improvements	7,500
Glade Lane wetland works	6,557.08
Dean Gardens play refurbishment	1,478.53
Bixley Fields improvements	13,983.86
Ravenor Park refurbishments	9,561.19
Ealing Central Sports Ground play refurbishment	84,968.23
Pitshanger Park refurbishments	11,417.99
Southall Park outdoor gym	7,485.42
CPZ East Acton Lane	11,833.96
Bollo Lane pedestrian, cycle and road safety measures	68,995.47
Acton school pedestrian cycle road safety measures	25,000
Corfton Road Surgery and Central Ealing Hub	726,655.62
Armstrong Way and Windmill Lane highways improvements	27,006.14
Northolt health hub	42,485.30

Villiers High School expansion	1,416,783.17
Beaconsfield Primary School expansion	236,538.54
Ellen Wilkinson School expansion	83,967.92
Churchfield Road highways improvements	32,277
East Acton, John Perryn, Ellen Wilkinson school expansion	529,440.62
Ark Acton Academy expansion	201,075.37
Greenford High School expansion	293,719.39
Montpelier Primary School expansion	23,674.38
Elthorne Park High School expansion	139,105.38
John Chilton School expansion	2,080,965.65
West Twyford Primary School expansion	77,413.20
Belvue High School expansion	21,931
Perivale Primary and Brentside High expansion	215,042
Ruislip Road pedestrian and cycle improvements	35,000
St Mark's Primary School expansion	40,486.63
Elthorne Park High and St Marks works	292,004.21
East Acton Community Project	113,874.32
South Acton Estate tree planting programme	84,424.74
Southall Broadway tree planting programme	29,274.56
Havelock Estate tree planting programme	5,920.50
SEN expansion programme and high priority condition works	90,918.34
Beaconsfield Primary School heating pipework	132,838.99
Air quality strategy and action plan	32,500.19
On-site energy monitoring projects	140,335.13
Hillcrest Surgery relocation refurbishment	1,577,821.15
Trinity Way highways improvements	34,531.48
Work Ealing service funding	105,980.58

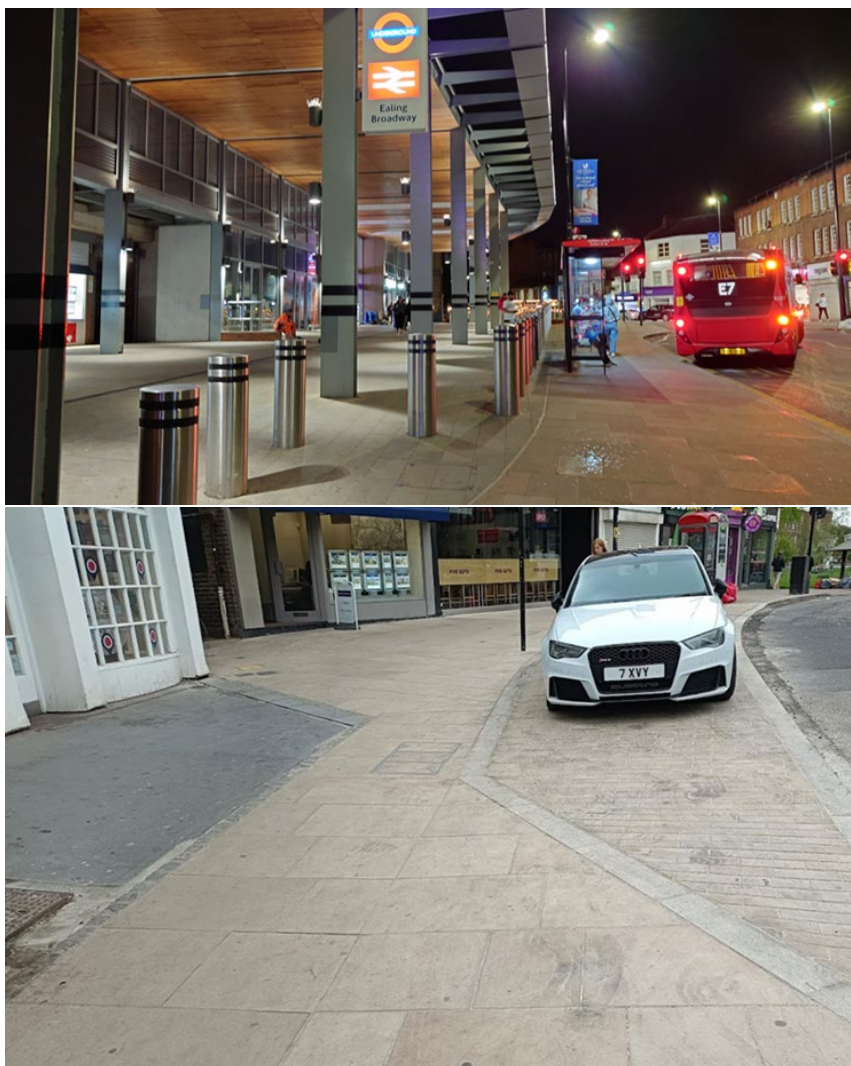
Appendix A - Case studies of projects delivered through S106 funding

Highways and Transport Case Studies

Ealing Broadway Station and Surrounds

Amount of S106 funding used: £600,000

The council delivered highways improvements on The Broadway and Haven Green around Ealing Broadway station that improved the highways public realm outside of and adjacent to the station. This has provided an improved and safe highway environment for local residents, highway and rail users. Improvements included, widened and resurfaced footways, with high quality paving material, and a resurfaced carriageway. The main signalised pedestrian crossing was widened significantly and relocated towards The Mall junction with The Broadway. Streetlighting was improved and the bus layby on Haven Green was removed and converted into green space.

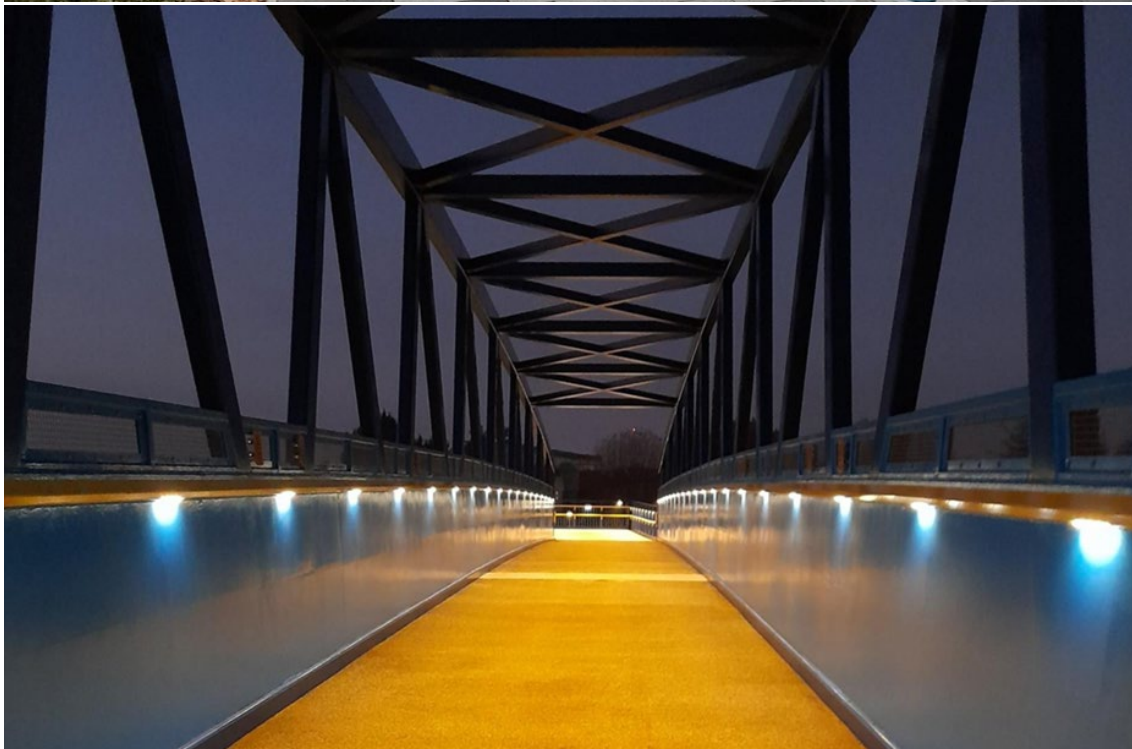
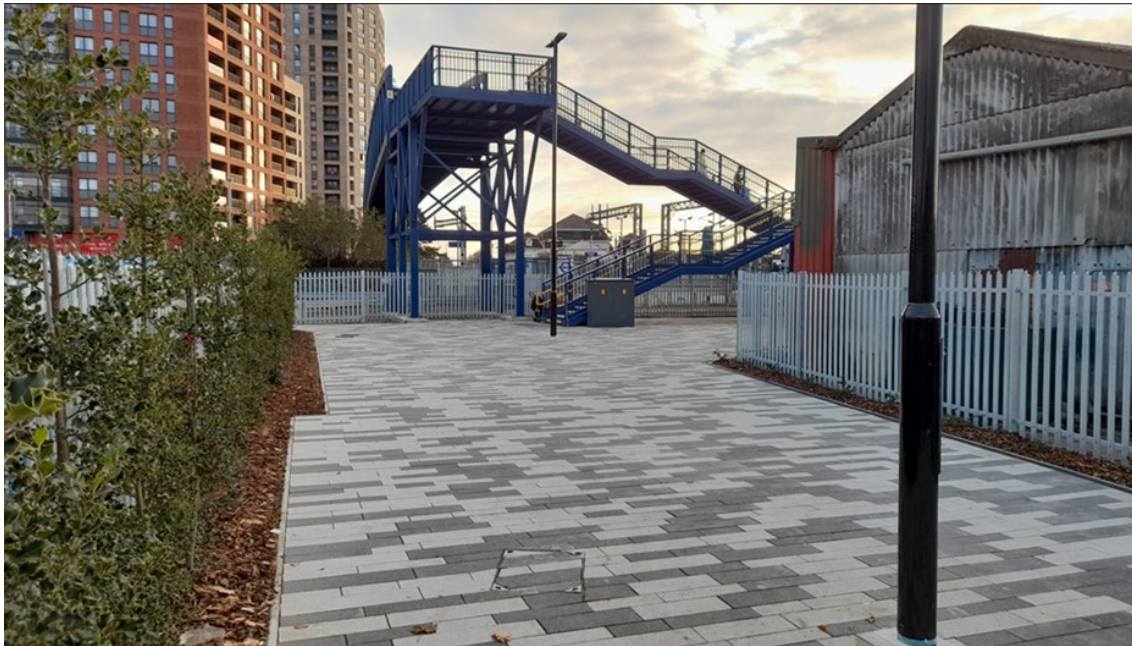


Images: Ealing Broadway public realm and highways improvements

Merrick Road Foot and Cycle Bridge

Amount of S106 funding used: £225,202

The Merrick Road Foot and Cycle Bridge in Southall, just east of Southall Station, provides a much-needed new pedestrian and cycle route in the area for local residents to use across the western railway line. The new link enhances active travel, providing cycle friendly steps with Dutch rails to help cyclists navigate the stairs. The bridge itself has new paved pedestrian areas at each end with new street lighting and CCTV to enhance safety.



Images: Merrick Road Foot and Cycle Bridge

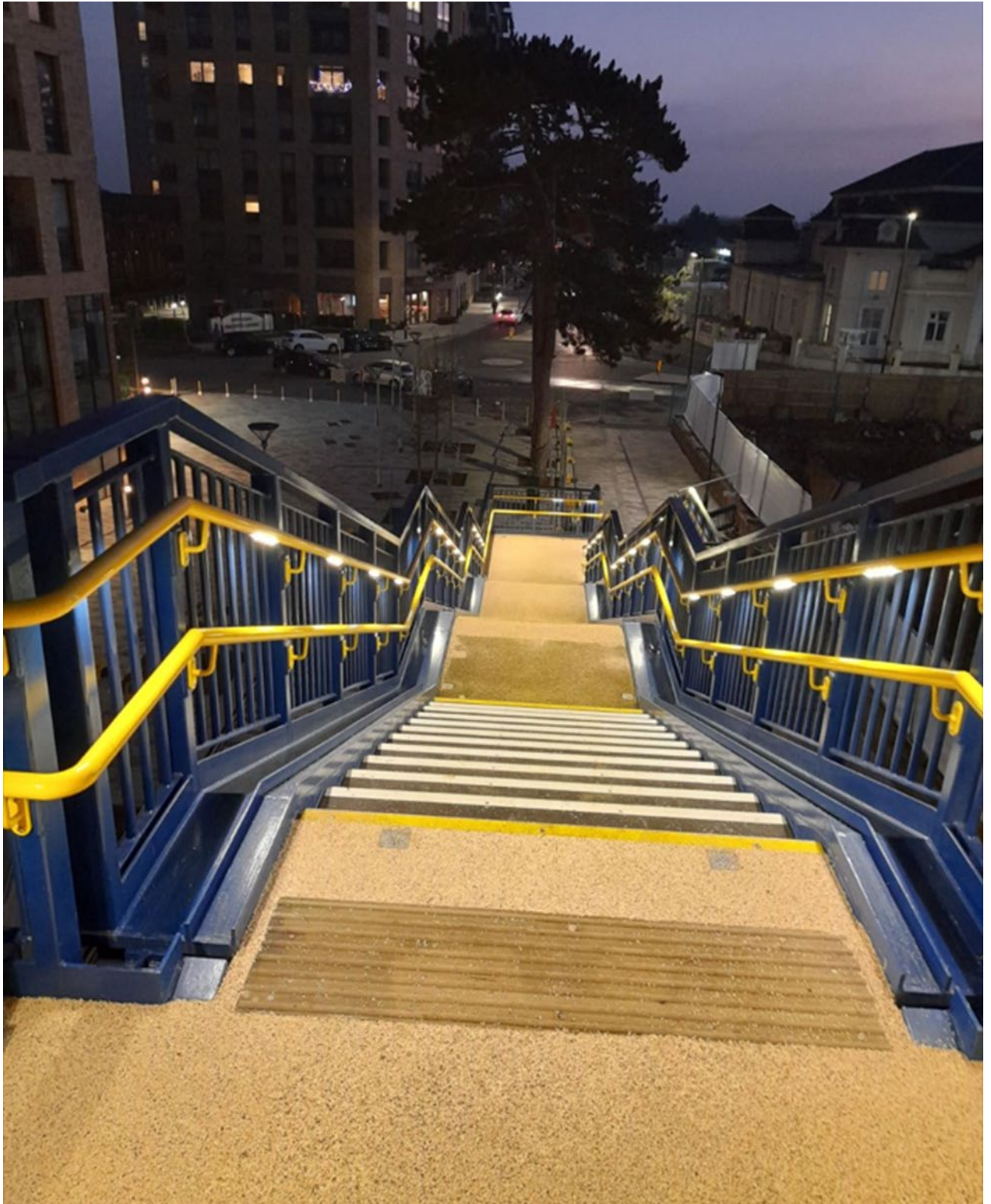


Image: Merrick Road Foot and Cycle Bridge

Merrick Road Cycle Hub

Amount of S106 funding used: £83,179

The new cycle hub at Merrick Road in Southall, adjacent to Southall Station, provides much needed new capacity for cycle parking for rail patrons and local residents, by providing a dedicated cycle parking area with covered parking, lighting and CCTV coverage for public safety.



Images: Merrick Road Cycle Hub

Trinity Way footway and carriageway resurfacing, line marking, and improved parking

Amount of S106 funding used: £146,614

Highway improvements have been delivered on Trinity Way in Acton. These have enhanced highways safety and active travel through new footway and carriageway resurfacing, new line marking and improved parking layout to make for a safer through route for cyclists.



Image: Trinity Way footways and carriageway improvements

Carbon Offset Fund (COF) Project Case Studies

Community Climate Grants

Amount of S106 COF funding allocated: £60,000

The Community Climate Grants (CCGs) are available to community organisations seeking to reduce their carbon emissions. Community organisations can apply for funding of up to £10k to enable carbon saving activities across a range of themes outlined in the council's Climate and Ecological Emergency Strategy, including energy, transport and waste.

Since April 2024, four faith organisations and a theatre have received funding to install renewable energy technologies and energy efficiency measures to their buildings. These energy upgrades have lowered the energy costs of these organisations and improved the comfort of the buildings for visitors. Many of these community organisations have their own climate/sustainability agendas, targets and accreditations. The CCGs have enabled organisations to deliver on these targets.



Image: Solar panels installed at St Paul's Church, Ealing (Northfields)

Library of Things

Amount of S106 COF funding allocated: £45,000

The Library of Things has been installed in Ealing Broadway, whereby residents in the borough can borrow household items for a daily fee. Affordable access to borrowing has enabled residents to borrow items for a fraction of the price of buying these items new saving them money. In addition to financial savings, the library of things reduces borough waste and carbon emissions by encouraging behaviour shifts towards a shared economy.



Image: The Library of Things, Ealing Broadway.

Healthy Homes Ealing

Amount of S106 COF funding allocated: £120,860

The council have partnered with Groundworks to develop the Healthy Homes Ealing (HHE) advice line which offers support and in-home consultations for residents in the borough concerned about the cost of energy in their home. HHE is part funded through the carbon offset fund.

In September 2024, HHE carried out 29 consultations with residents across the borough providing advice about how to keep homes warm in winter and cool in summer. HHE helps to mitigate the impacts of fuel poverty by advising residents on how to lower energy bills through grant funded energy efficiency improvements. These are National Government grants provided via the ECO4 and GBIS schemes. By helping residents to keep homes warm during winter, HHE improves public health and wellbeing in the borough.

Currently, 33% of territorial carbon emissions in Ealing are domestic. Improving the energy efficiency of homes in the borough reduces energy usage of housing and subsequently reduces domestic carbon emissions.

Leisure centres decarbonisation

Amount of S106 COF funding allocated: £1,699,506

Carbon offset funding was used to top up Salix funding from the Public Sector Decarbonisation Scheme to upgrade the energy systems at Acton, Northolt and Dormers Wells Leisure Centres. Heat pumps and solar thermal equipment have been installed at these 3 leisure centres to improve the energy efficiency of heating and cooling across the sites. The Heat system upgrades have led to energy savings which lowers the running costs of the sites. Leisure centres are critical facilities in the borough and these energy/heating upgrades have improved the comfort and usability of these spaces for Ealing residents.

Ealing Food Partnership

Amount of S106 COF funding allocated: £64,912

The Ealing Food Partnership (EFP) brings together diverse stakeholders from across the borough including voluntary organisations, businesses, the NHS, council staff, and residents, to foster a food network. The partnership enables awareness of and access to affordable, healthy and seasonal food whilst reducing food waste through distribution of surplus food via the digital Ealing Food Map.

By encouraging local food production and reducing borough food waste, the EFP helps to reduce borough carbon emissions generated through food consumption.

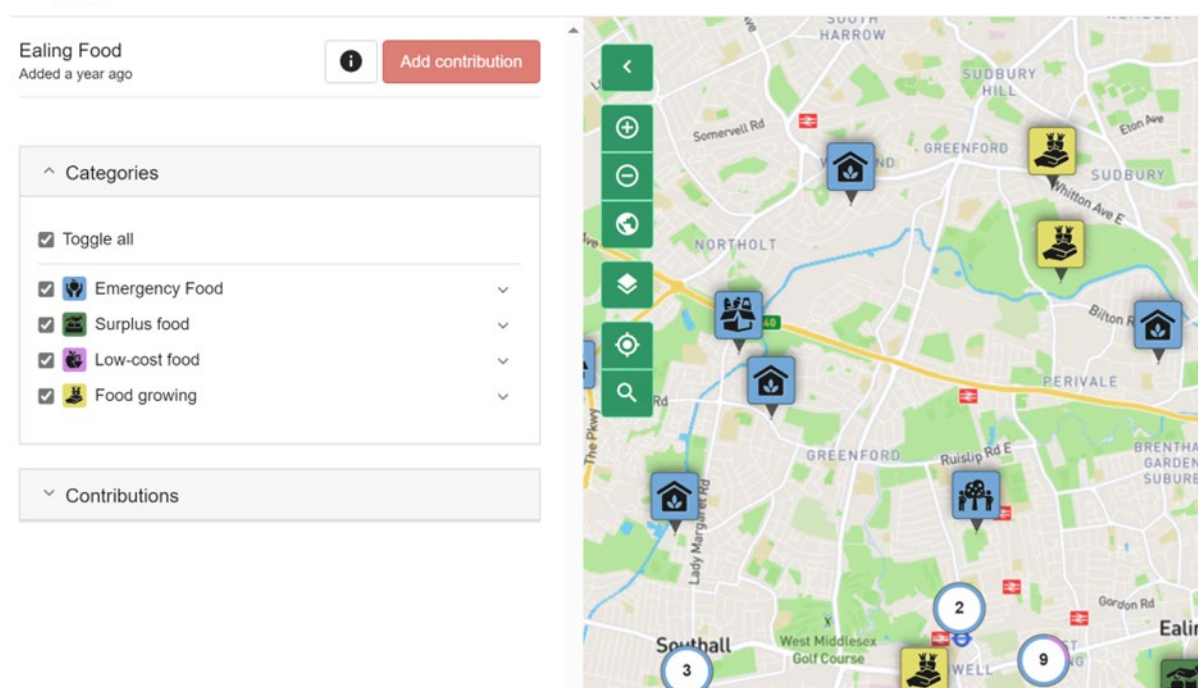


Image: Screenshot from the digital Ealing Food Map

Employment and Skills Project Case Studies

Pathways Programme

Amount of S106 funding used: £48,071

Delivery of the Pathways Programme was supported by S106 money. The council, acting as the corporate parent to young people with care experience, aimed to address the significant barriers to employment faced by these individuals. The project provided paid work placements at the London Living Wage (LLW) for up to five months in a highly supportive environment, fostering the development of both soft and practical skills within a professional setting. Each year, the project supports 15 young people. The programme has seen positive outcomes, with participants progressing into employment, education, or training (EET) opportunities, including apprenticeships and jobs. To date, 4 young people have secured apprenticeships within the council, and another 4 have found employment elsewhere.

Bollo Brook Youth Centre – Film Making

Amount of S106 funding used: £10,804

The Bollo Brook Youth Centre's film-making project was supported by S106 money to fund the creation of 2 films by young people, working alongside industry professionals. The films, "I Am She" and "Lucky," explore black and mixed-race young women's relationship with their hair and their experiences navigating a sexualised world, respectively. The funding supported 8 days of film set-based workshops involving over 80 young people, as well as 4 days of post-production workshops. The project aimed to bridge the gap between young people and the creative industries. For many of the young women involved, the experience was transformative, with 8 of them securing paid work or training within the creative industries. The films have been showcased at the V&A, Riverside Studios, and ActOne Cinema, and have been used to train professionals in Children's Services and at workshops in schools.



Image: Filming on set



Image: Film stills showing scenes

Work Ealing

Amount of S106 funding used: £172,566

The Work Ealing project utilised S106 money to deliver various employment and skills activities. This included organising job fairs to support residents in finding employment or training opportunities, promoting apprenticeship schemes, and implementing a CRM system to advertise vacancies and opportunities through the website. The project aimed to provide residents with opportunities to apply for jobs and participate in various events and programs designed to enhance their employability.

Education Projects Case Studies

St Ann's School Expansion

The project provides additional school places for children and young people with an Education, Health & Care Plan for special education needs and is being funded through S106.

The project was prompted by a further significant rise in pupils born in the last 10 years seeking special school places in the borough. There has been a rise in pupils with severe learning difficulties or profound and multiple learning difficulties, many of whom also have a diagnosis of Autistic Spectrum Disorder. Students may also have complex medical conditions, severe communication disorders, bi-modal sensory impairment, high personal care and postural management needs and challenging behaviours.

To enable the school to expand, additional classrooms and specialist learning spaces are being provided, with the accommodation meeting government requirements and guidelines. The first phase is complete, with the second phase on site and phase 3 to follow.



Image: Extension at St Ann's School to provide additional capacity

Mandeville School at Oldfield Primary School

The project provides additional school places for children with an Education, Health & Care Plan for Special Education needs and is being funded with support from S106.

The project was prompted by a further significant rise in pupils born in the last 10 years seeking special school places in the borough. There has been a rise in pupils with special education needs, many of whom have a diagnosis of Autistic Spectrum Disorder, which the new facilities cater for. Pupils who attend Mandeville School may also have complex medical conditions, severe communication disorders, bi-modal sensory impairment, high personal care and postural management needs and challenging behaviours.

To enable the school to expand, the school has taken on a classroom block at the nearby Oldfield Primary School which provides additional classrooms and specialist learning spaces, with the accommodation having been altered to meet the school's requirements as well as the government's guidelines. Conversion work was also carried out to enable Oldfield Primary School to accommodate pupils from the block being used by Mandeville School.



Image: Play equipment at Mandaville School

Schools' Energy Surveys

This S106 funded project provides energy surveys of school sites to assist schools and the local authority in energy, sustainability, decarbonisation and climate action planning, and additionally to assist with sourcing funding to decarbonise the heat supply in schools.

The energy surveys follow industry guidance and include various elements including building information, energy consumption and carbon emissions, heating and hot water systems and opportunities, key challenges and plans for the sites.

The contents of the surveys comply with the eligibility criteria of Public Sector Decarbonisation Scheme, through which the local authority has secured funding to install low carbon air source heat pump systems at 20 schools.

Parks Project Case Study

Walpole Park

Amount of S106 funding used: £20,800

The council's Parks Service has successfully managed a project in Walpole Park, utilising S106 funds to enhance the playground and repair the wall in the walled garden. Walpole Park, a key recreational area in the borough, hosts the Ealing Summer Festival and offers green space for relaxation, recreation, and outdoor lunches. This initiative aligns with the council's broader efforts to maintain and improve its parks and open spaces, ensuring they remain vibrant and accessible for the community.



Image: Walpole Park playground