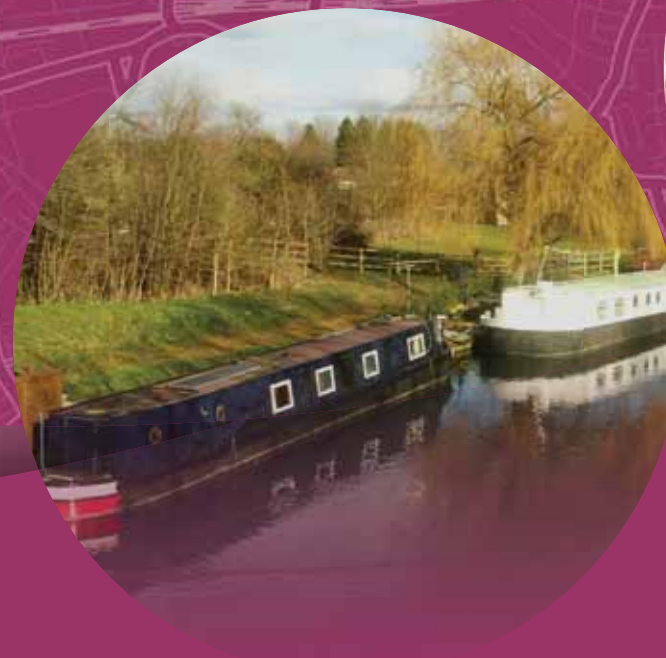


Adopted Policies Map Booklet Schedules and Map Sheets



Contents

Map Sheet	Page	Corresponding Schedules	Page
1 Open Space	3	1 Green Belt	4
		2 Metropolitan Open Land	4
		3 Public Open Space (Including Proposed POS)	5
		4 Community Open Space	8
		5 Heritage Land	9
		6 Green Corridor & Blue Ribbon Network	10
2 Deficiency Mapping – Local/District	11	NA	
3 Deficiency Mapping – Metropolitan	12	NA	
4 Nature Conservation	13	7 Nature Conservation Sites	14
5 Archaeological Interest Areas	17	8 Archaeological Interest Areas	16
6 Industrial Locations	18	9 Strategic Industrial Locations & Locally Significant Sites	19
		10 Mineral Aggregate Distribution Sites	19
7 Shopping and Town Centres	20	11 Shopping Frontages	21
8 Landmarks	25	12 Landmarks	24
Appendices			
Appendix One	26		

Introduction

What is the Policies Map?

Covering the whole borough, the Policies Map illustrates geographically the application of policies in the adopted DPDs. In this regard it will:

- identify areas of protection, such as Green Belt and nature conservation sites, defined through the development plan process,
- allocate sites for particular land use and development proposals included in any adopted development plan documents,
- and in doing so, sets out the areas to which specific policies apply.

Given the interdependent relationship between the designations on the policies map and the policies in the DPD, the table at appendix 1 of this booklet has been prepared to identify the relevant 'policy hook'/antecedent for each of the designations/layers shown on the policies map (including this booklet).

The Policies Map comprises a large scale map sheet (approximately A0 size), prepared on an Ordnance Survey base, at a scale which is sufficient to allow the policies and proposals to be clearly illustrated. This main map sheet is also supplemented by a separate map booklet (i.e. this document), comprising schedules of all sites/designations, and accompanying map sheets. The Policies Map Booklet effectively provides a gazetteer for the Policies Map, which complements the DPDs themselves.

What is the purpose of this document?

With regard to the paper version of the Policies Map, whilst the large scale policies map illustrates the key policies designations, for reasons of legibility it is not possible to differentiate between the various classifications that may exist for an individual designation on the main map sheet. This additional level of information with regard to individual layers, displayed graphically, can be helpful in guiding the application of policy and accordingly is provided in this booklet. Moreover, there are a number of associated layers (e.g. areas of deficiency) which are not designations per se, but rather derive from these, and help in our understanding of the main designations and the application of policies to these. This detail is therefore better provided on separate map sheets. The maps and accompanying schedules in this document have been grouped into general thematic headings.

This print version of the plan is also supplemented by an online interactive version of the Policies Map. This contains all of the detail contained in the paper version. In addition other potential planning constraints maintained outside of the development plan process, including for example conservation areas, listed buildings, scheduled ancient monument, watercourses, flood risk areas, and transport safeguarding areas, are viewable on the interactive document.

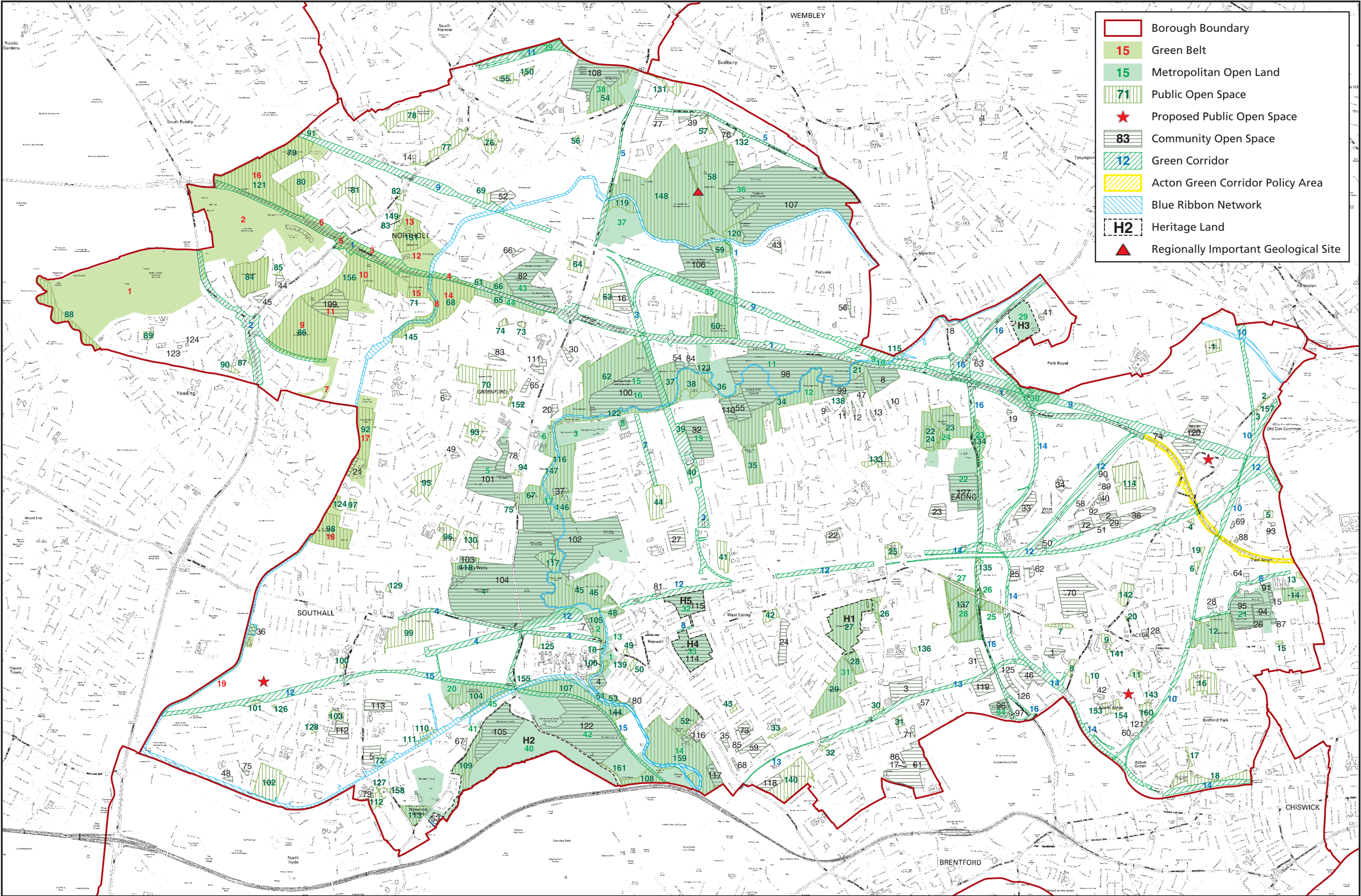


Table 1 - Green Belt

Ref. No.	Name & Location	Consolidated Area	Size (ha)
1	Down Barns/ W London Shooting Grounds		81.4713
2	Lime Tree Park - A40		59.2513
3	Western Avenue Parkway (part)	Western Avenue Parkway	1.42602
4	Western Avenue Parkway (part)	Western Avenue Parkway	0.529757
5	Western Avenue Parkway (part)	Western Avenue Parkway	14.6534
6	Western Avenue Parkway (part)	Western Avenue Parkway	0.770698
7	Area S of Rectory Fields	Northolt-Greenford Countryside Park	3.82417
8	Canal adjacent to Marnham Fields	Northolt-Greenford Countryside Park	1.41615
9	Rectory Fields	Northolt-Greenford Countryside Park	24.4191
10	Northala Fields	Northolt-Greenford Countryside Park	17.691
11	Northolt Golf Course & Medlar Fields	Northolt-Greenford Countryside Park	11.2664
12	Belvue Park & adjoining OS & moorings	Northolt-Greenford Countryside Park	12.2817
13	Northolt Manor	Northolt-Greenford Countryside Park	2.78643
14	Marnham Fields	Northolt-Greenford Countryside Park	12.1625
15	Smith's Farm	Northolt-Greenford Countryside Park	7.77222
16	Islip Manor-A40		31.6797
17	King Georges Field	Spikes Bridge - King George's Field	12.0008
18	Spikes Bridge Park	Spikes Bridge - King George's Field	9.92867
19	Hayes Bridge Leisure Gardens		2.93561

Table 2 - Metropolitan Open Land

Ref. No.	Name & Location	Consolidated Area	Size (ha)
1	Fitzherbert Walk & east of R. Brent	Brent River Park	7.7673
2	Brent Meadow/Conolly Dell	Brent River Park	5.32644
3	East central area of BRP	Brent River Park	66.9377
4	W Middx Golf Course	Brent River Park	34.3694
5	Greenford Park Cemetery & allotments & playing field	Brent River Park	15.573
6	W of R Brent at Cardinal Wiseman School	Brent River Park	4.50839
7	Golf Course, central BRP	Brent River Park	47.6025
8	Ruislip Rd E at Brentside School	Brent River Park	1.65245
9	Northernmost area BRP	Brent River Park	0.593703
10	Northernmost area BRP	Brent River Park	0.56589
11	Ealing Golf Course N of R Brent	Brent River Park	36.7022
12	Ealing Golf Course etc S of R Brent	Brent River Park	53.0142
13	River Board Depot, adj Viaduct Inn	Brent River Park	0.23773
14	Elthorne Park & Elthorne Waterside, Hanwell W7	Brent River Park	29.1266
15	Perivale Park	Brent River Park	51.0147
16	Gurnell Pool Open Space & waterside	Brent River Park	11.0364
17	Island W of Mayfield School	Brent River Park	0.217844
18	Island S of Hanwell Bridge	Brent River Park	0.129252
19	Trailfinders Sports Ground, Vallis Way, W13	Brent River Park	7.42828
20	Glade Lane Canalside Park	Brent River Park	13.6468
21	Acton Park - Bromyard Avenue Area		29.299
22	Hanger Hill	Hanger Hill	13.6748
23	Chatsworth Wood	Hanger Hill	3.01164
24	Hanger Hill	Hanger Hill	15.1859

Ref. No.	Name & Location	Consolidated Area	Size (ha)
25	Ealing Common (part)	Ealing Common	1.64476
26	Ealing Common (part)	Ealing Common	0.218057
27	Ealing Common (part)	Ealing Common	0.752213
28	Ealing Common (part)	Ealing Common	14.4863
29	Twyford Abbey		6.7195
30	Guinness Open Space setting		7.04921
31	Ealing Green, Walpole & Lammas Parks		25.8631
32	RBKC Cemetery	Hanwell Cemeteries	6.27101
33	City of Westminster Cemetery	Hanwell Cemeteries	8.98215
34	Area adjoining Gunnersbury Park (Old Actonians SG)		2.77024
35	Horsenden Hill (part)	Horsenden Hill	28.8522
36	Horsenden Hill (part)	Horsenden Hill	132.531
37	Horsenden Hill (part)	Horsenden Hill	13.3031
38	Ealing Northern		21.5669
39	r/o Halsbury Rd East		3.43741
40	Norwood Green - Osterley & Tentelow Lane Sports Ground	Norwood Green - Osterley	57.6485
41	Tentelow Lane Open Space	Norwood Green - Osterley	0.215109
42	Warren Farm/Jubilee Meadow/Long Wood	Norwood Green - Osterley	66.0001
43	Birch Wood/GSK Sports Ground	New addition as part of Development Strategy (form	17.2925
44	Greenford Lagoons	New addition as part of Development Strategy	4.41233
45	Tentelow Lane/Canal towpath	Brent River Park	0.767165

Table 3 - Public Open Space

Ref. No.	Name & Location	London Plan Classification	Consolidated Classification	Size (ha)
1	Wesley Playing Fields, Acton NW10	Small Open Space		1.59412
2	Cerebos Gardens, Acton NW10	Pocket Park		0.116054
3	Victoria Gardens, Acton NW10	Pocket Park		0.0633423
4	Friars Place Green, Friary Road, Acton W3	Pocket Park		0.153214
5	The Green, Acton W3	Small Open Space		0.593495
6	St. Dunstan's Gardens Open Space, Acton W3	Pocket Park		0.36169
7	Twyford Crescent Gardens, Acton W3	Small Open Space		0.729632
8	Heathfield Gardens, Acton W3	Small Open Space		0.651963
9	The Woodlands Recreation Ground, Acton W3	Small Open Space		0.700868
10	Mill Hill Gardens, Acton W3	Pocket Park		0.27332
11	Avenue Road Recreation Ground, Acton W3	Small Open Space		0.801121
12	Acton Park, Acton W3	Local Park and Open Space		10.1711
13	Claydon Garden, Acton W3	Pocket Park		0.217106
14	Trinity Way Open Space, Acton W3	Local Park and Open Space		2.6543
15	Bromyard Gardens, Acton W3	Pocket Park		0.148916
16	Southfields Recreation Ground, Acton W4	Local Park and Open Space		4.93244
17	Beaconsfield Road Open Space, Ealing W4	Pocket Park		0.262135
18	Acton Green Common, Acton W4	Local Park and Open Space		4.5048
19	Friars Gardens Open Space, Acton W3	Pocket Park		0.16131
20	Coronation Gardens, Acton W3	Pocket Park		0.0475375
21	Brentham Meadows, Ealing W5	Local Park and Open Space		3.27355
22	Fox Wood Local Nature Reserve, Ealing W5	Local Park and Open Space		2.62938
23	Hanger Hill Park, Ealing W5	Local Park and Open Space		8.01202
24	Hanger Hill Crest Open Space/Fox Reservoir, Ealing W5	Local Park and Open Space		2.37896
25	Haven Green, Ealing W5	Small Open Space		1.79815
26	Ealing Green, Ealing W5	Small Open Space	DP Walpole Lammas	1.28663
27	Walpole Park, Ealing W5	Local Park and Open Space	DP Walpole Lammas	12.2418
28	Lammas Enclosure, Ealing W5	Small Open Space	DP Walpole Lammas	1.8578
29	Lammas Park, Ealing W5	Local Park and Open Space	DP Walpole Lammas	9.74684
30	Maytrees Rest Garden, Ealing W5	Pocket Park		0.383726
31	Village Park Recreation Ground, Ealing W5	Small Open Space		0.580428
32	Bramley Road Open Space & Rest Garden, Ealing W5	Pocket Park		0.272242
33	Fielding Walk, Ealing W13	Pocket Park		0.383796
34	Pitshanger Park, Ealing W5	Local Park and Open Space	DP Pitshanger-Cleveland	18.355
35	Cleveland Park, Ealing W13	Local Park and Open Space	DP Pitshanger-Cleveland	4.82647
36	River Brent Conservation Site, Ealing W13	Small Open Space		1.55778
37	Longfield Playing Fields, Perivale	Local Park and Open Space		4.8967
38	Gurnell Playing Fields, Ealing W13	Local Park and Open Space		5.64467
39	Gurnell Grove Play Area, Ealing W13	Small Open Space		0.820918
40	Castlebar Halt, Chelsea Gardens, Ealing W13	Small Open Space		0.647642
41	Drayton Green, Ealing W13	Local Park and Open Space		2.77718
42	Dean Gardens, Ealing W13	Small Open Space		1.30075
43	Walmer Gardens Open Space, Ealing W13	Pocket Park		0.261965
44	Cuckoo Park Village Green, Hanwell W7	Local Park and Open Space		4.98221
45	Brent Lodge Park, Hanwell W7	Local Park and Open Space	DP Brent River Park	6.70941
46	Churchfields Recreation Ground, Hanwell W7	Local Park and Open Space	DP Brent River Park	8.33519
47	Manor Court Green, Hanwell W7	Small Open Space		0.409119
48	Conolly Dell, Hanwell W7	Small Open Space		0.837485

Ref. No.	Name & Location	London Plan Classification	Consolidated Classification	Size (ha)
49	Lower Boston Road Open Space, Hanwell W7	Pocket Park		0.246341
50	King George's Field, Hanwell W7	Small Open Space		0.495431
51	Green Lane Wharf, Hanwell W7	Pocket Park		0.0299161
52	Elthorne Park, Hanwell W7	Local Park and Open Space	DP Elthorne	4.07455
53	St. Margaret's Road Open Space, Hanwell	Small Open Space		0.748866
54	Grove Farm	Local Park and Open Space		7.9761
55	Wood End Recreation Ground (West)	Small Open Space		1.19021
56	Rothsay Recreation Ground, Greenford	Pocket Park		0.206745
57	Rosewood Open Space, Greenford	Small Open Space		0.484873
58	Horsenden Hill East	District Park	MP Horsenden Hill	28.4615
59	Horsenden Lower Thrifts Field, Greenford	Local Park and Open Space	MP Horsenden Hill	2.38568
60	Ealing Central Sports Ground, Greenford	Local Park and Open Space		10.4088
61	Long Drive Open Space, Greenford	Pocket Park		0.151453
62	Perivale Park, Greenford	District Park		21.6594
63	Cayton Green Park, Greenford	Local Park and Open Space		2.81323
64	Oldfield Recreation Ground, Greenford	Local Park and Open Space		2.04399
65	Greenford Lagoons, Greenford	Local Park and Open Space	MP Northolt and Greenford Countryside Park	4.3779
66	Birch Wood, Greenford	Local Park and Open Space		2.80455
67	Marnhams Field	Local Park and Open Space		3.314
68	Marnham Fields	Local Park and Open Space	MP Northolt and Greenford Countryside Park	10.5607
69	Carr Road Playground & Ken Acock Centre, Northolt	Small Open Space		0.579007
70	Ravenor Park, Greenford	Local Park and Open Space		12.6708
71	Smith's Farm, Northolt	Local Park and Open Space	MP Northolt and Greenford Countryside Park	6.40013
72	Bixley Fields, Southall	Small Open Space		1.11901
73	Ormsby Green, Greenford	Pocket Park		0.265084
74	West Ridge Green, Greenford	Pocket Park		0.39892
75	Windmill Lane Open Space, Greenford	Pocket Park		0.267146
76	Wood End Wireless Station, Northolt	Local Park and Open Space		2.16223
77	Mandeville Parkway, Northolt	Local Park and Open Space		3.68869
78	Northolt Park, Northolt	Local Park and Open Space		5.10976
79	Lord Halsbury's Memorial Playing Fields, Northolt	Local Park and Open Space		6.454
80	Prior Fields	Local Park and Open Space	DP Islip Manor Meadows	5.26592
81	Islip Manor Park, Northolt	Local Park and Open Space		6.74692
82	Mandeville Green, Northolt	Pocket Park		0.396399
83	Northolt Village Rest Garden, Northolt	Pocket Park		0.117786
84	Lime Tree Park, Northolt	Local Park and Open Space		9.30159
85	Laughton Road Playground, Northolt	Pocket Park		0.171955
86	Rectory Park, Northolt	District Park	MP Northolt and Greenford Countryside Park	24.1312
87	Yeading Lane Estate Open Space, Northolt	Small Open Space		0.429549
88	Yeading Brook Fields, Northolt	Local Park and Open Space		6.03383
89	Down Way Playground, Northolt	Small Open Space		0.601994
90	Viking Primary School Open Space, Northolt	Small Open Space		0.42072
91	Fairview Playground, Northolt	Small Open Space		0.810753
92	King George's Playing Field, Southall	Local Park and Open Space		6.47363
93	Greenford Recreation Ground, Greenford	Local Park and Open Space		2.09641
94	Windmill Lane Recreation Ground, Greenford	Pocket Park		0.289579
95	Jubilee Park, Southall	Local Park and Open Space		4.68863
96	Mount Pleasant Leisure Gardens, Southall	Local Park and Open Space		3.325
97	Cranleigh Park/Gardens, Southall	Small Open Space		0.7663

Ref. No.	Name & Location	London Plan Classification	Consolidated Classification	Size (ha)
98	Spikes Bridge Park (Southall Municipal Sports Ground), Southall	Local Park and Open Space		8.20895
99	Southall Park, Southall	Local Park and Open Space		10.1147
100	The Crescent Open Space, Southall	Pocket Park		0.147648
101	Spencer Street Open Space, Southall	Pocket Park		0.221703
102	Southall Recreation Ground, Southall	Local Park and Open Space		7.17236
103	Manor House Grounds, Southall	Small Open Space		1.13076
104	Glade Lane Canalside Park, Southall	Local Park and Open Space		7.95527
105	Brent Meadow, Southall	Local Park and Open Space	DP Brent River Park	3.06251
106	Fitzherbert Walk & Hanwell Island, Southall	Small Open Space		1.57026
107	Blackberry Corner & Jubilee Meadow, Southall	Local Park and Open Space		6.8298
108	Long Wood, Southall	Local Park and Open Space		2.50671
109	Tentelow Wood & Playing Fields, Southall	Local Park and Open Space		5.04988
110	Havelock Road Open Space, Southall	Small Open Space		0.700055
111	Canalway Park, Southall	Pocket Park		0.283623
112	Wolf Fields, Southall	Small Open Space		1.4149
113	Norwood Green, Southall	Local Park and Open Space		2.94856
114	North Acton Playing Fields	Local Park and Open Space		8.98311
115	West Gate Open Space	Pocket Park		0.320978
116	Bittern's Field	Local Park and Open Space		9.14402
117	Brent Valley Sports Ground	Local Park and Open Space		3.77941
118	Dormers Wells, Moated Manor	Local Park and Open Space		2.72945
119	Paradise Fields	Local Park and Open Space	MP Horsenden Hill	2.728
120	Horsenden Farm & Visitor Centre, Horsenden Hill	Local Park and Open Space	MP Horsenden Hill	2.4248
121	Islip Manor Meadows	Local Park and Open Space	DP Islip Manor Meadows	18.5664
122	Ruislip Road East	Local Park and Open Space		2.85877
123	Perivale Meadows East	Small Open Space		0.986053
124	Cranleigh Wood	Small Open Space		0.621092
125	Ellis Road	Small Open Space		0.689694
126	Queen's Road Public Open Space	Pocket Park		0.0462215
127	Wolf Green	Pocket Park		0.0516802
128	Western Road Open Space	Pocket Park		0.0775239
129	North Road Island	Pocket Park		0.166643
130	Dormers Wells Green	Small Open Space		1.27632
131	Ridding Lane	Small Open Space		1.27743
132	Whitton Drive Open Space	Pocket Park		0.0498815
133	Montpelier Park	Small Open Space		1.85364
134	Chatsworth Wood	Local Park and Open Space		3.44539
135	Inglis Road Open Space	Pocket Park		0.0723458
136	Warwick Dene	Pocket Park		0.291169
137	Ealing Common	Local Park and Open Space		15.9054
138	Brentham Green Open Space	Pocket Park		0.0262904
139	Green Lane Open Space	Pocket Park		0.0534279
140	Blondin Park, Ealing W5	Local Park and Open Space		8.74445
141	Crown Street Open Space	Pocket Park		0.0682001
142	Springfield Gardens	Local Park and Open Space		2.16894
143	Alexandra Rest Gardens	Pocket Park		0.0530534
144	Trumpers Field	Local Park and Open Space		3.14862
145	Bridge Farm Open Space	Small Open Space		1.1557
146	Mayfield	Local Park and Open Space		2.61267

Ref. No.	Name & Location	London Plan Classification	Consolidated Classification	Size (ha)
147	Greenford River Side	Local Park and Open Space		4.39306
148	Horsenden Hill West	District Park	MP Horsenden Hill	46.8817
149	Northolt Village Green	Small Open Space		0.798967
150	Wood End Recreation Ground (East)	Pocket Park		0.389574
151	Northolt Manor & Belvue Park	Local Park and Open Space		6.86273
152	Oldfield Lane Open Space	Pocket Park		0.157245
153	South Park	Small Open Space		0.525534
154	Bollo Brook Open Space	Small Open Space		0.570609
155	St. Bernard's Conservation Strip	Pocket Park		0.194017
156	Northala Fields incl. Medlar	District Park	MP Northolt and Greenford Countryside Park	20.7417
157	Midland Terrace Gardens, Acton NW10	Pocket Park		0.102627
158	Frogmore Green (Alms	Pocket Park		0.126716
159	Elthorne Waterside, Hanwell W7	District Park	DP Elthorne	21.9115
160	South Acton Recreation Ground	Small Open Space		1.64288
161	Windmill Lane Green Corridor	Pocket Park		0.349958
NA	Southall Gas Works	Proposed Public Open Space		NA
NA	Southern Gateway	Proposed Public Open Space		NA
NA	South Acton Estate	Proposed Public Open Space		NA

Table 4 - Community Open Space

Ref. No.	Name & Location	COS Classification	Size (ha)
1	Acton High School Sports Ground, Gunnersbury Lane, Acton W3	Sports Ground/Golf Course	1.1635
2	Alwyn Gardens Sports Ground, Alwyn Gardens, Acton W3	Sports Ground/Golf Course	1.07616
3	Ascott 1 & 2 Allotments, Ranelagh Road/Queen Anne's Gardens, Ealing W5	Allotments	4.94205
4	Billet Hart Allotments, Green Lane, Hanwell W7	Allotments	1.48076
5	Bixley Field Alloments, Merrick Road, Southall	Allotments	2.31989
6	Braund Avenue Allotments, Ruislip Road, Greenford	Allotments	0.44652
7	Brent Meadow Allotments, Brentvale Avenue, Southall	Allotments	0.48798
8	Brentham Allotments, Brunswick Road, Ealing W5	Allotments	4.50631
9	Brentham Estate Allotments, r/o 2-20 North View, Ealing W5	Allotments	0.125348
10	Fowlers Walk, Ealing W5	Allotments	0.100008
11	Denison Road West, Ealing W5	Allotments	0.09023
12	Denison Road East, Ealing W5	Allotments	0.184972
13	Brunner Road, Ealing W5	Allotments	0.187585
14	Brighton Drive Allotments, Lewes Close, Northolt	Allotments	0.177681
15	Perryn Allotments (Formerly Bromyard Avenue), Acton W3	Allotments	0.309637
16	Cayton Road Playing Field (part), Greenford	Sports Ground/Golf Course	3.92428
17	Chilton Avenue South Allotments South, Chilton Avenue, Ealing W5	Allotments	0.037157
18	Cleveley Crescent Allotments, Clevely Crescent, Ealing W5	Allotments	0.456133
19	Connell Crescent Allotments, Connell Crescent, Ealing W5	Allotments	0.169846
20	Costons Lane Allotments, Costons Lane, Greenford	Allotments	0.454199
21	Durdans Park Allotments, off Lady Margaret Road, Southall	Allotments	0.558567
22	Durston House School Playing Field, Carlton Road, Ealing W5	Sports Ground/Golf Course	1.26815
23	Ealing Cricket Club, Corfton Road, Ealing W5	Sports Ground/Golf Course	2.05452
24	Northfields Allotments, Northfield Avenue, Ealing W5	Allotments	2.77628
25	Ealing Lawn Tennis Club, Daniel Road, Ealing W5	Sports Ground/Golf Course	1.21088
26	The Vale Allotments, Oak Way, Acton W3	Allotments	0.84182

Ref. No.	Name & Location	COS Classification	Size (ha)
27	Framfield Allotments, Dryden Avenue, Hanwell W7	Allotments	2.73786
28	Goldsmiths Close Allotments, East Churchfield Road, Acton W3	Allotments	0.222358
29	Horn Lane, Great Western Allotments, Horn Lane, Acton W3	Allotments	0.871126
30	Greenford Hall Allotments, Greenford Road, Greenford	Allotments	0.575033
31	Gunnersbury Avenue (Riding School Land), Ealing W5	Sports Ground/Golf Course	1.12449
32	GWR Sports Ground, Vallis Way, W13	Sports Ground/Golf Course	7.42828
33	Haberdashers Askes Sports Ground, Queens Drive, Acton W3	Sports Ground/Golf Course	2.54788
34	Hanger Hill Garden Estate Sports Ground, Acton W3	Sports Ground/Golf Course	0.870099
35	Haslemere Wildlife Reserve, Clitherow Avenue, Hanwell W7	Other	0.348295
36	Hayes Bridge Allotments, Beaconsfield Road, Southall	Allotments	0.668592
37	High Lane Allotments, High Lane, Hanwell W7	Allotments	0.686113
38	Horn Lane Sports Ground, Acton Main Line Station, Horn Lane, Acton W3	Sports Ground/Golf Course	2.41517
39	Horsenden Allotments, Melville Avenue, Greenford	Allotments	1.03597
40	Moat Place Allotments, Acton W3	Allotments	0.451371
41	Iveagh Avenue, Acton NW10	Sports Ground/Golf Course	0.241879
42	Jerome Allotments, Hanbury Road, Acton W3	Allotments	0.324317
43	Jubilee Road Allotments, Bilton Road, Perivale	Allotments	1.22781
44	Lime Trees 1 Allotments, Laughton Road, Northolt	Allotments	0.484866
45	Lime Trees 2 Allotments, Hawtrey Avenue, Northolt	Allotments	0.534192
46	Liverpool Victoria Sports Ground, Carbery Avenue, Acton W3	Sports Ground/Golf Course	2.41624
47	Ludlow Road Allotments, r/o 12-34 Ludlow Road, Ealing W5	Allotments	0.119489
48	Manor Way Allotments, Manor Way, Southall	Allotments	0.255624
49	Mansell Road Allotments, Mansell Road, Greenford	Allotments	0.273872
50	Noel Road (The Chestnuts) Allotments, Noel Road, Acton W3	Allotments	0.453696
51	Noel Road Open Space, Alwyn Gardens, Acton W3	Sports Ground/Golf Course	0.474065
52	Oldfield Allotments, Carr Road, Northolt	Allotments	2.1888

Ref. No.	Name & Location	COS Classification	Size (ha)
53	Osterley Lane open space, Southall	Sports Ground/Golf Course	0.870624
54	Perivale West Allotments, Stockdove Way, Perivale	Allotments	0.576267
55	Pitshanger Allotments, Perivale Gardens, Ealing W13	Allotments	3.37548
56	Pleasant Way Allotments, Pleasant Way, Perivale	Allotments	0.399918
57	Popes Lane Allotments, Beech Gardens, Ealing W5	Allotments	0.088368
58	The Link, Acton W3	Allotments	0.180365
59	Haslemere Avenue Allotments, Ealing W13	Allotments	2.47838
60	South Acton Allotments West, Palmerston Road, Acton W3	Allotments	0.261086
61	South Ealing Cemetery, South Ealing Road, Ealing W5	Cemetery	9.3953
62	Western Gardens, Springfield Bowls Club, Western Gardens, Ealing W5	Sports Ground/Golf Course	0.433944
63	St Anne's Gardens Allotments, St Anne's Gardens, Acton NW10	Allotments	0.1324
64	St. Dunstan's Allotments, East Acton Lane, Acton W3	Allotments	0.138262
65	Stanhope Park Allotments, Oldfield Lane South, Greenford	Allotments	0.515746
66	Stanley Avenue Allotments, Stanley Avenue, Greenford	Allotments	0.395444
67	Tentelow Lane Allotment site, Southall	Allotments	0.310893
68	Boundary Nature Area, Clitherow Avenue, Hanwell W7	Other	0.278403
69	The Crescent Allotments, The Crescent, Acton W3	Allotments	0.131621
70	Twyford Avenue Sports Ground, Acton W3	Sports Ground/Golf Course	9.92447
71	Village Park Allotments, Popes Lane, Ealing W5	Allotments	0.287087
72	West Acton Primary School Playing Field, Noel Road, Acton W3	Sports Ground/Golf Course	1.41176
73	Haslemere Avenue Sports Ground, Mervyn Road, Ealing W13	Sports Ground/Golf Course	1.36591
74	Western Avenue Allotments, r/o 356-386 Western Avenue, Acton W3	Allotments	0.216536
75	Western Road Allotments, Western Road, Southall	Allotments	0.22433
76	Whitton Drive Allotments, Whitton Avenue East, Greenford	Allotments	0.755697
77	Whitton Place Allotments, Melville Avenue, Greenford	Allotments	0.487521
78	Windmill Lane Allotments, Windmill Lane, Greenford	Allotments	2.09008
79	Wolf Fields Allotments, Norwood Road, Southall	Allotments	0.963236
80	St. Margarets Road Community Open Space	Allotments	0.3008
81	Tennyson Road	Other	0.197769
82	GSK Sports Ground	Sports Ground/Golf Course	14.2188
83	Ravenor Park	Allotments	0.473955
84	Beekeeper's/Argyle Road	Other	0.52033
85	Searchlight Allotment	Allotments	0.075453
86	Chilton Avenue North Allotments	Allotments	0.022038
87	Bromyard Avenue Allotments	Allotments	0.20197
88	Braid Avenue	Allotments	0.110141
89	Saxon Drive	Allotments	0.028298
90	Walton Gardens	Allotments	0.08408
91	Chestnuts Allotments (Formerly Bromyard Avenue)	Allotments	0.644638
92	Howard Close Allotments	Allotments	0.110296
93	St Andrew's Allotments	Allotments	0.121108
94	Bromyard Open Space, Acton W3	Sports Ground/Golf Course	2.73067
95	The Park Club/East Acton Lane	Sports Ground/Golf Course	7.05538
96	Old Actonians Sports Ground	Sports Ground/Golf Course	2.38529
97	Baron's Pond, Ealing W5	Other	0.221858
98	Ealing Golf Course N of R Brent	Sports Ground/Golf Course	37.5623
99	Brentham Club	Sports Ground/Golf Course	4.95277
100	Perivale Park Golf Club	Sports Ground/Golf Course	19.214
101	Greenford Park Cemetery	Cemetery	12.4326

Ref. No.	Name & Location	COS Classification	Size (ha)
102	Brent Valley Golf Course	Sports Ground/Golf Course	27.9107
103	Dormer's Wells Allotments	Allotments	0.75078
104	West Middlesex Golf Club	Sports Ground/Golf Course	57.4443
105	Tentelow Lane Sports Ground	Sports Ground/Golf Course	11.7224
106	Perivale Wood (Brent Valley Bird Sanctuary)	Other	10.9825
107	Horesenden Hill Golf Course	Sports Ground/Golf Course	51.9339
108	Ealing Northern Sports Centre	Sports Ground/Golf Course	10.1069
109	Northolt Golf Course	Sports Ground/Golf Course	6.23641
110	West London University Sports Ground	Sports Ground/Golf Course	2.02462
111	The Litten Nature Reserve	Other	1.05308
112	Havelock Cemetery	Cemetery	2.2441
113	Hortus Cemetery	Cemetery	2.64413
114	City of Westminster Cemetery	Cemetery	8.98215
115	RBKC Cemetery	Cemetery	6.27101
116	Elthorne Sports Centre	Sports Ground/Golf Course	0.491239
117	Evershed Sports Ground	Sports Ground/Golf Course	1.83986
118	Blondin Allotments and Community Park Land, Boston Manor Road, Brentford	Allotments	1.79851
119	Popefield Allotments/Sports Ground	Sports Ground/Allotments	2.74503
120	North Acton Cemetery	Cemetery	5.48609
121	South Acton Allotments East, Palmerston Road, Acton W3	Allotments	0.099756
122	Warren Farm Sports Ground	Sports Ground/Golf Course	24.931
123	Rushdene Crescent (West)	Allotments	0.096036
124	Rushdene Crescent (East)	Allotments	0.050238
125	Carbury Avenue Allotments	Allotments	0.423204
126	Carbury Avenue (St. Columbus Tennis Club)	Sports Ground/Golf Course	0.322769
127	Barclays Sports Ground	Sports Ground/Golf Course	8.77363
128	St Mary's Burial Ground	Cemetery	0.408221

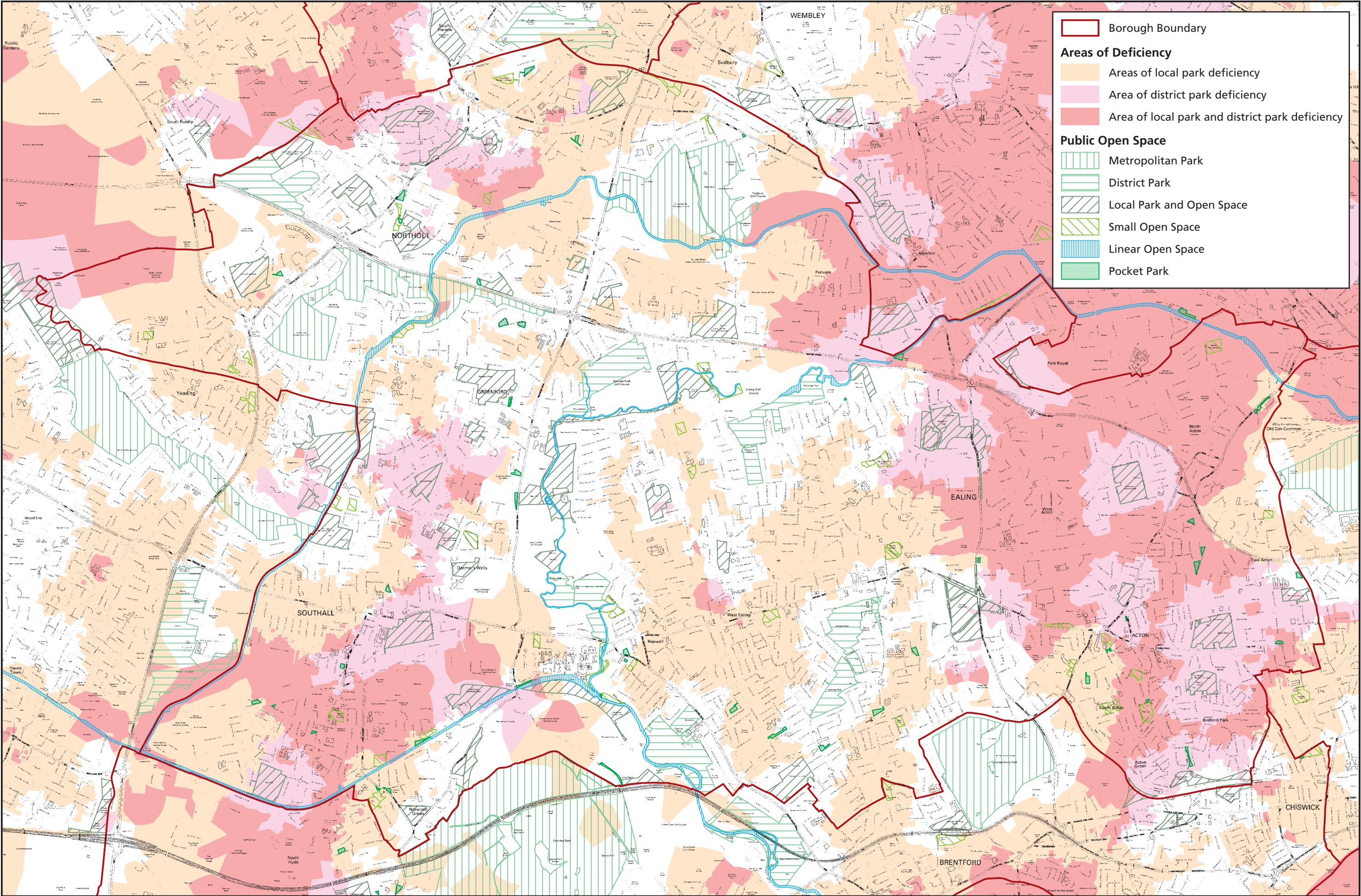
Table 5 - Heritage Land

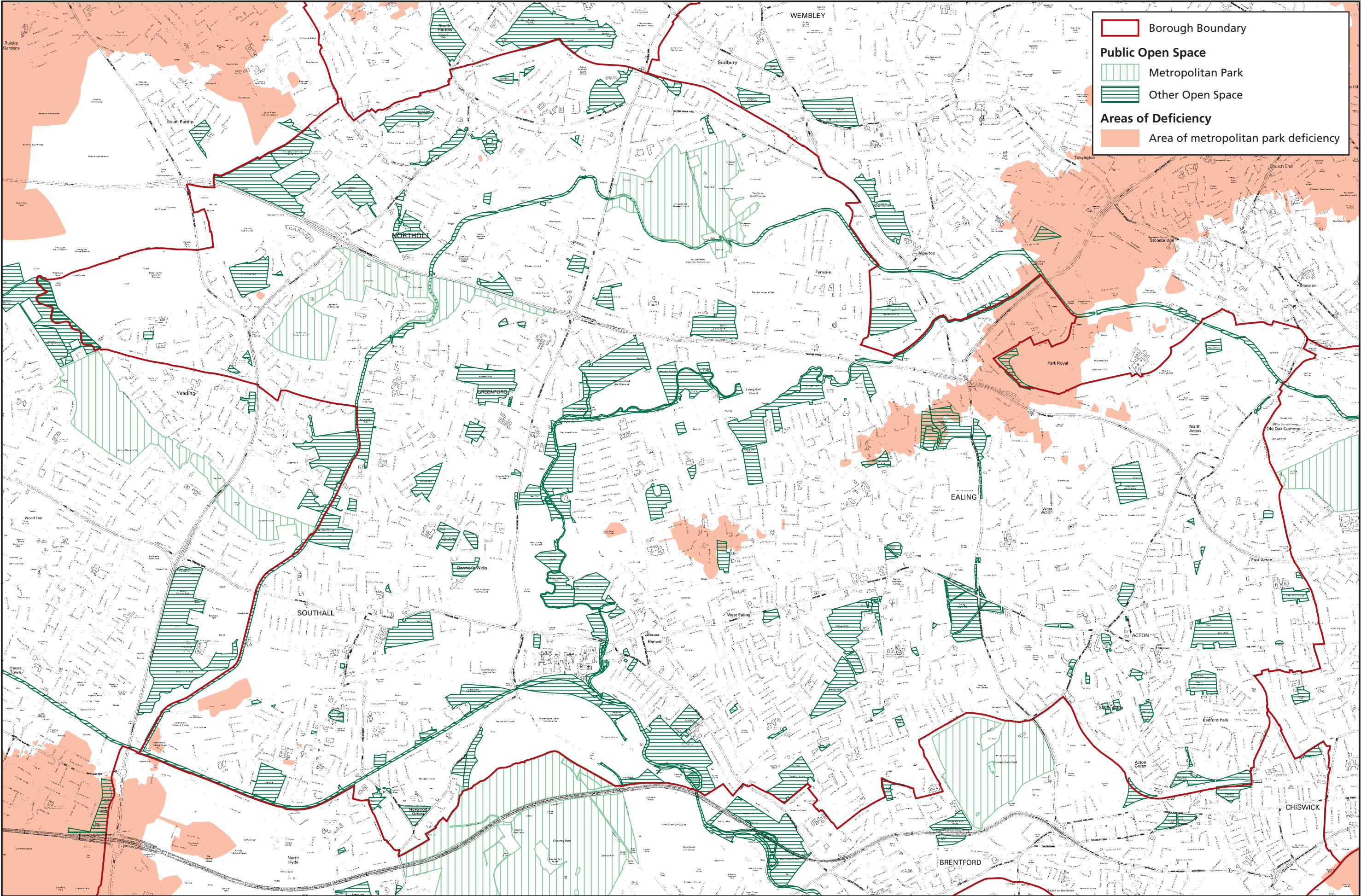
Ref. No.	Name & Location	Grade	Size (ha)
H1	Pitshanger Manor & Walpole	II	12.4656
H2	Osterley Park Environs	II*	46.1138
H3	Twyford Abbey Grounds	NA	6.71216
H4	City of Westminster Cemetery	II	8.98252
H5	Royal Borough of Kensington Cemetery	II	6.26192

Table 6 - Green Corridor and Blue Ribbon Network

Ref. No.	Name & Location	Status
1	Western Avenue	Green Corridor
2	Ruislip Road, Northolt	Green Corridor
3	Greenford Branch Line	Green Corridor
4	Uxbridge Road/Iron Bridge, Southall	Green Corridor
5	Greenford Road	Green Corridor
6	East Churchfield Road/East Acton Lane	Green Corridor
7	Cuckoo Avenue	Green Corridor
8	Uxbridge Road	Green Corridor
9	Central Line	Green Corridor

Ref. No.	Name & Location	Status
10	North London Line	Green Corridor
11	Railtrack east of Northolt Park Station	Green Corridor
12	British Rail & Central Line	Green Corridor
13	Piccadilly Heathrow Line	Green Corridor
14	District Line with Piccadilly to Rayners Lane	Green Corridor
15	Brentford Line	Green Corridor
16	North Circular Road	Green Corridor
17	Grand Union Canal	Blue Ribbon Network
18	River Brent	Blue Ribbon Network





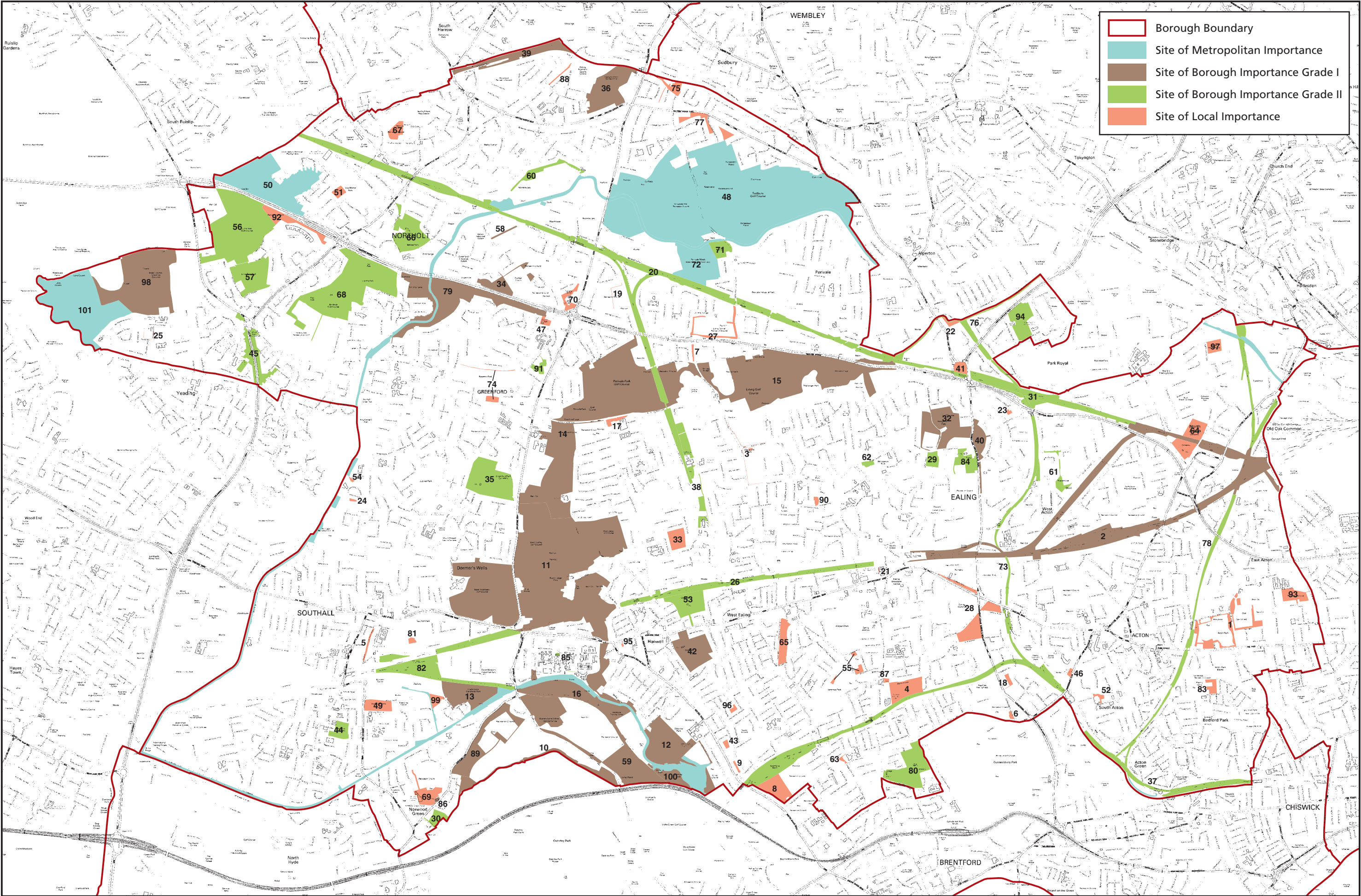


Table 7 - Nature Conservation Sites

Ref. No.	Name & Location	Grade	GLA Ref.	Size (ha)
1	Acton Park & Acton Lane Sports Ground	Local Importance	EaL22	5.140297
2	Acton Railsides	Borough Importance Grade I	EaBI19	48.32399
3	Argyle Road Hedge	Local Importance	EaL51	0.268332
4	Ascott Allotments	Local Importance	EaL52	4.921311
5	Avenue Road hedge	Local Importance	EaL04	0.513365
6	Barons Pond	Local Importance	EaL19	0.233458
7	Beekeepers	Local Importance	EaL50	0.255058
8	Blondin Park Nature Area & Allotments	Local Importance	EaL29	4.113257
9	Boundary Nature Area	Local Importance	EaL53	0.217881
10	Boundary Stream & The Aviary	Borough Importance Grade I	EaBI09	5.16333
11	Brent River Park North: Brent Valley Golf Club to Uxbridge Road	Borough Importance Grade I	EaBI14C	119.0937
12	Brent River Park: Elthorne Waterside	Borough Importance Grade I	EaBI10B	14.71876
13	Brent River Park: Glade Lane Park	Borough Importance Grade I	EaBI10C	9.000876
14	Brent River Park: Greenford Line to Marnham Fields	Borough Importance Grade I	EaBI14B	67.99065
15	Brent River Park: Hanger Lane to Greenford Line	Borough Importance Grade I	EaBI14A	56.01599
16	Brent River Park: Hanwell Flight	Borough Importance Grade I	EaBI10A	19.77698
17	Brent Side	Local Importance	EaL47	0.680523
18	Carbery Avenue Allotments	Local Importance	EaL42	0.423186
19	Cayton Road Hedge	Local Importance	EaL48	0.081094
20	Central Line, West Ruislip Branch	Borough Importance Grade II	EaBII16	56.60565
21	Christ Church School nature area	Local Importance	EaL24	0.04239
22	Cleveley Crescent Allotments	Local Importance	EaL16	0.461657
23	Connell Crescent Allotments	Local Importance	EaL18	0.170296
24	Cranleigh Park Rough	Local Importance	EaL37	0.137216
25	Down Way Park	Local Importance	EaL40	0.046831
26	Ealing Broadway to Hanwell Railsides	Borough Importance Grade II	EaBII17	11.25197
27	Ealing Central Sports Ground	Local Importance	EaL36	1.771687
28	Ealing Common	Local Importance	EaL25	5.658921
29	Ealing Reservoir	Borough Importance Grade II	EaBII13	1.533397
30	Fields and wood between Osterley Lane & St Mary's Avenue South	Borough Importance Grade II	EaBII06	1.549449
31	Former Guinness Mounds	Borough Importance Grade II	EaBII15	1.626748
32	Fox Wood & Hanger Hill Park	Borough Importance Grade I	EaBI15	10.89059
33	Framfield Allotments	Local Importance	EaL43	2.73759
34	Greenford Birch Wood	Borough Importance Grade I	EaBI06	3.748555
35	Greenford Park Cemetery	Borough Importance Grade II	EaBII24	12.27962
36	Grove Farm	Borough Importance Grade I	EaBI11	11.18982
37	Gunnersbury Triangle	Metropolitan Importance	M115 Ea	0.495453
38	Gurnell Grove & Castlebar Park	Borough Importance Grade II	EaBII10	4.394577
39	Halsbury Road Cutting	Borough Importance Grade I	EaBI08	6.476949
40	Hanger Hill Wood	Borough Importance Grade I	EaBI16	3.443331
41	Hanger Lane Gyratory	Local Importance	EaL17	1.181976
42	Hanwell (City of Westminster) Cemetery	Borough Importance Grade I	EaBI13	8.982063
43	Haslemere Wildlife Reserve	Local Importance	EaL28	0.314506
44	Havelock Cemetery	Borough Importance Grade II	EaBII23	2.244184
45	Hayes By-Pass Roughts	Borough Importance Grade II	EaBII02	6.193122
46	Heathfield Gardens	Local Importance	EaL20	0.268215
47	Holy Cross Churchyard, Greenford	Local Importance	EaL08	0.601133
48	Horsenden Hill	Metropolitan Importance	M044	138.8231

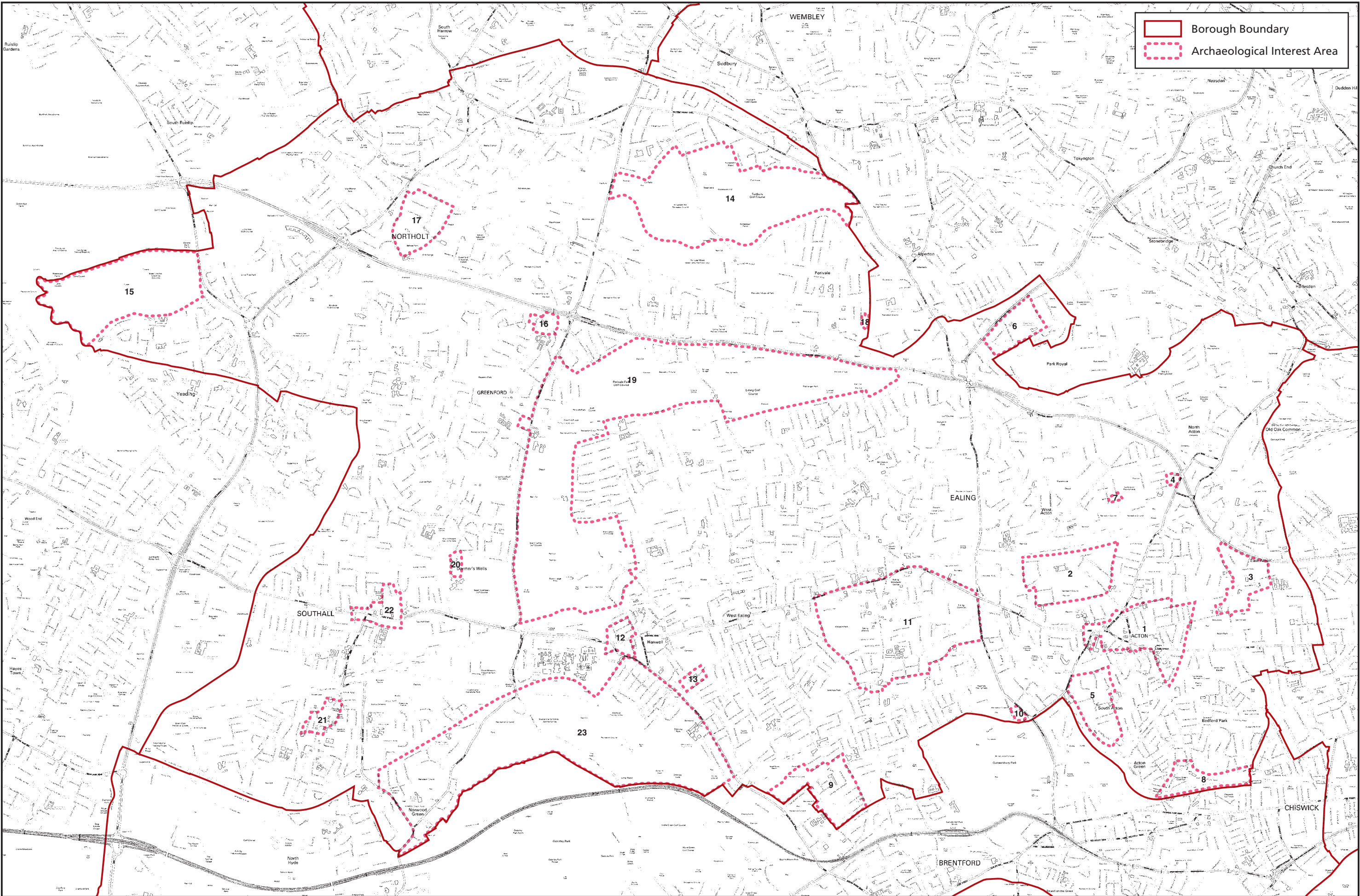
Ref. No.	Name & Location	Grade	GLA Ref.	Size (ha)
49	Hortus Cemetery	Local Importance	EaL44	2.644134
50	Islip Manor (Ealing part)	Metropolitan Importance	M037 Ea	24.77269
51	Islip Manor Park	Local Importance	EaL03	0.885049
52	Jerome Allotments	Local Importance	EaL41	0.38741
53	Kensington & Chelsea (Hanwell) Cemetery	Borough Importance Grade II	EaBII09	6.272503
54	Lady Margaret Road	Local Importance	EaL54	0.110168
55	Lammas Park nature area & enclosure	Local Importance	EaL14	0.827126
56	Lime Trees Golf Course	Borough Importance Grade II	EaBII01A	28.67077
57	Lime Trees Park	Borough Importance Grade II	EaBII01B	8.674605
58	Long Drive grassland	Borough Importance Grade I	EaBI07	0.406519
59	Brent River Park: Long Wood and meadow	Borough Importance Grade I	EaBI12	21.75784
60	Lyons tree belt	Borough Importance Grade II	EaBII08	2.588453
61	Mason's Green Lane	Borough Importance Grade II	EaBII26	1.96654
62	Montpelier Park wood	Borough Importance Grade II	EaBII11	0.5102
63	Mount Carmel School Nature Area	Local Importance	EaL55	0.210207
64	North Acton Cemetery	Local Importance	EaL21	5.495376
65	Northfield Avenue	Local Importance	EaL12	3.191927
66	Northolt Manor & Belvue Park	Borough Importance Grade II	EaBII04	8.234551
67	Northolt Meadow	Local Importance	EaL46	1.69678
68	Northolt/Greenford Countryside Park	Borough Importance Grade II	EaBII28	29.72314
69	Norwood Hall woodland	Local Importance	EaL05	3.308543
70	Oldfield Primary School	Local Importance	EaL45	1.334657
71	Perivale Community Centre	Borough Importance Grade II	EaBII21	2.477601
72	Perivale Wood	Metropolitan Importance	M008	11.70419
73	Piccadilly & District Lines in Ealing	Borough Importance Grade II	EaBII19	36.33242
74	Ravenor Park nature area & stream	Local Importance	EaL07	0.835604
75	Ridding Lane Open Space	Local Importance	EaL35	1.441517
76	River Brent at Hanger Lane	Borough Importance Grade II	EaBII22	1.831762
77	Rosewood	Local Importance	EaL49	2.235087
78	Silverlink Metro & Dudding Hill Loop in Ealing	Borough Importance Grade II	EaBII20	13.64071
79	Smith's Farm, Marnham Fields, Bridge Farm Open Space & Greenford Lagoons	Borough Importance Grade I	EaBI03	22.46317
80	South Ealing Cemetery	Borough Importance Grade II	EaBII12	9.447403
81	Southall Park Nature Conservation Area	Local Importance	EaL26	0.330993
82	Southall Railsides	Borough Importance Grade II	EaBII18	16.01374
83	Southfields Recreation Ground nature area	Local Importance	EaL31	1.019308
84	St Augustine's Priory	Borough Importance Grade II	EaBII27	3.16967
85	St Bernard's Hospital walls	Borough Importance Grade II	EaBII25	0.133833
86	St Mary the Virgin Churchyard, Norwood Green	Borough Importance Grade I	EaBI18	0.162348
87	St Mary's Churchyard, Ealing	Local Importance	EaL15	0.195278
88	Sudbury Lane	Local Importance	EaL10	0.330877
89	Tentelow Lane woodland & meadow	Borough Importance Grade I	EaBI04	9.29769
90	The Grange Estate pond	Local Importance	EaL13	0.321876
91	The Litten Nature Reserve	Borough Importance Grade II	EaBII07	1.053084
92	The West London Academy nature area	Local Importance	EaL32	3.553186
93	Trinity Way Recreation Ground	Local Importance	EaL30	2.455186
94	Twyford Abbey Grounds	Borough Importance Grade II	EaBII14	5.415829
95	Wall at Factory Yard	Local Importance	EaL33	0.059129
96	Walmer Gardens Open Space	Local Importance	EaL27	0.297529
97	Wesley Playing Fields	Local Importance	EaL39	1.487948

Ref. No.	Name & Location	Grade	GLA Ref.	Size (ha)
98	West London Shooting Grounds & Downe Barn Moat	Borough Importance Grade I	EaBI01	30.03234
99	Whittle Road Park	Local Importance	EaL38	1.048704
100	Brent River Park: Wyncote Farm	Borough Importance Grade I	EaBI20	2.980421
101	Yeadling Brook Fields	Metropolitan Importance	M051 Ea	30.53622
NA	London's Canals	Metropolitan Importance	M006 Ea	52.80788

Table 8 – Archaeological Interest Areas

Ref. No	Name
1	Central Acton
2	Creffield Road
3	East Acton Lane
4	Horn Lane/Gipsy Corner
5	Avenue Gardens/Heathfield Road
6	Twyford Abbey
7	Westfields Road/N. Acton Playing Fields
8	Acton Green Common
9	Blondin Park/Junction Road/Whitestile Road
10	Gunnersbury Lane/Popes Lane
11	Walpole Park/Ealing Common
12	West Hanwell

Ref. No	Name
13	Oaklands Road
14	Horsenden Hill
15	Downe Barns
16	Ferrymead Gardens/Oldfield Lane South
17	Northolt Village Green/Belvue Park
18	Manor Farm Road, Perivale
19	Brent River Valley
20	Farm Close, Dormers Wells
21	The Green, Southall
22	High Street, Southall
23	Tentelow Lane/Canal/Boston Road



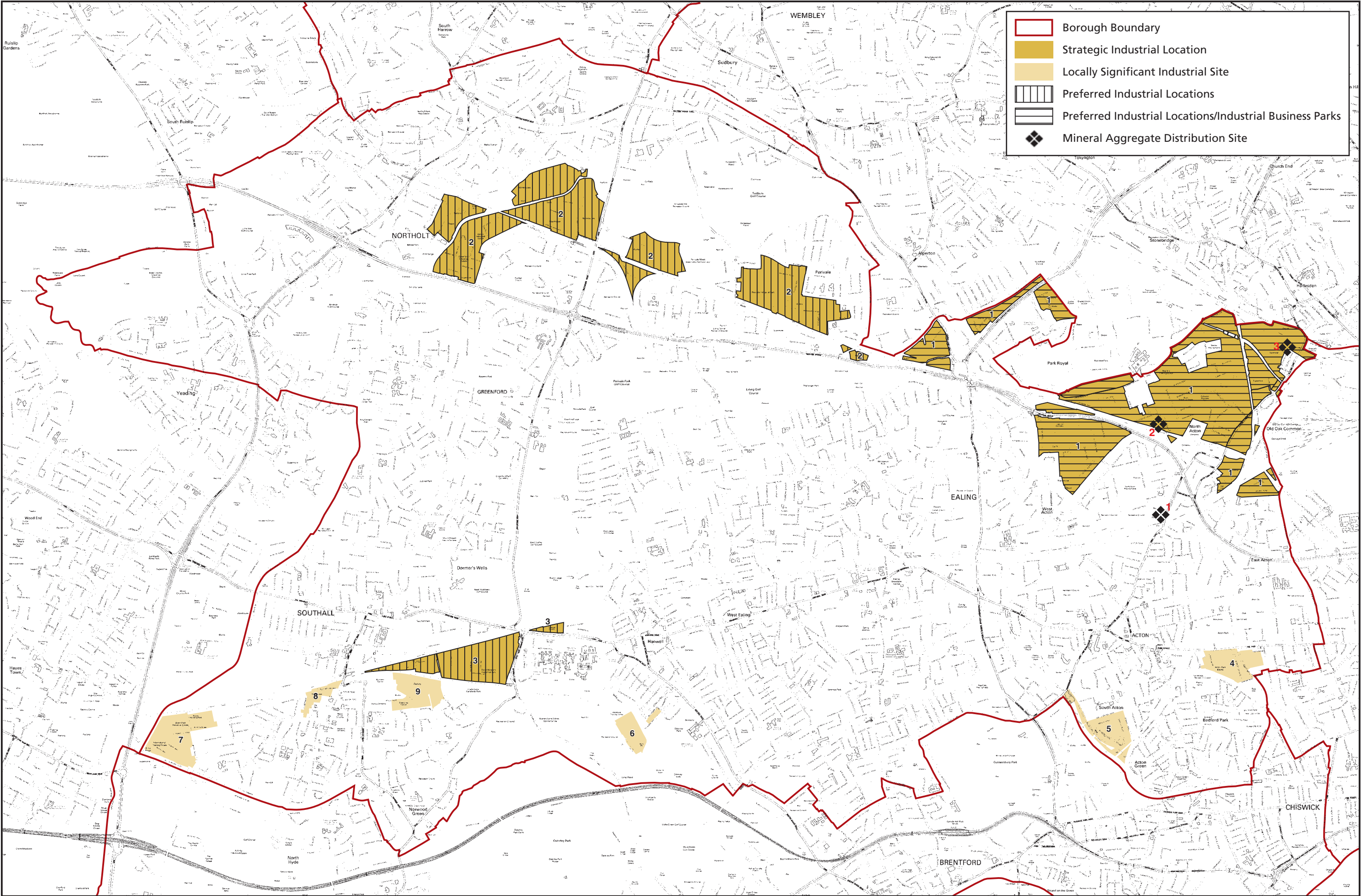


Table 9 – Strategic Industrial Locations & Locally Significant Sites

Ref. No.	Name	Location	Type	SIL Type	Size (ha)
1	Park Royal	Acton Wells, Park Royal	SIL	PIL/IBP	5.49708
1	Park Royal	Victoria Industrial Estate, Park Royal	SIL	PIL/IBP	4.94269
1	Park Royal	Depot, Park Royal Road, Park Royal	SIL	PIL/IBP	0.288296
1	Park Royal	Kendal Avenue, Park Royal	SIL	PIL/IBP	35.0722
1	Park Royal	N. of Park Royal Leisure Complex, Park Royal	SIL	PIL/IBP	3.01058
1	Park Royal	Freightliner Terminal, Park Royal	SIL	PIL/IBP	17.5274
1	Park Royal	Tudor House/Plantagenet House, Park Royal	SIL	PIL/IBP	2.11282
1	Park Royal	S. of Midland Terrace, Park Royal	SIL	PIL/IBP	0.219817
1	Park Royal	Nash House, Park Royal	SIL	PIL/IBP	0.4347
1	Park Royal	Victoria Terrace, Park Royal	SIL	PIL/IBP	0.145409
1	Park Royal	North Acton Road, Park Royal	SIL	PIL/IBP	86.4106
1	Park Royal	Matrix Park, Coronation Road, Park Royal	SIL	PIL/IBP	6.20483
1	Park Royal	Telford Way, Park Royal	SIL	PIL/IBP	5.69817
1	Park Royal	Old Oak Common Lane, Park Royal	SIL	PIL/IBP	0.372024
1	Park Royal	Elvedon Road, Park Royal	SIL	PIL/IBP	6.15726
1	Park Royal	Brent Crescent, Park Royal	SIL	PIL/IBP	6.50648
1	Park Royal	West Gate/Quill Street, Park Royal	SIL	PIL/IBP	8.9321
1	Park Royal	West Gate/Amoco House, Park Royal	SIL	PIL/IBP	1.82042
1	Park Royal	Atlas Road	SIL	PIL/IBP	6.88175
2	Northolt, Greenford, Perivale	Rockware Triangle, Greenford	SIL	PIL	18.3586
2	Northolt, Greenford, Perivale	Auriol Drive & Butlers wharf, Greenford	SIL	PIL	27.4443
2	Northolt, Greenford, Perivale	Auriol Drive North, Greenford	SIL	PIL	15.2669
2	Northolt, Greenford, Perivale	Rowdell Road, Greenford	SIL	PIL	10.9611
2	Northolt, Greenford, Perivale	Greenford Industrial Estate, Greenford	SIL	PIL	23.6359
2	Northolt, Greenford, Perivale	Perivale Industrial Park, Perivale	SIL	PIL	36.7726
2	Northolt, Greenford, Perivale	Alperton Lane (North side) Greenford	SIL	PIL	0.374062
2	Northolt, Greenford, Perivale	Alperton Lane (South side), Greenford	SIL	PIL	1.23105
3	Great Western	Great Western Industrial Park, Southall	SIL	PIL	25.1488
3	Great Western	Triangle Centre, Southall	SIL	PIL	1.77344
3	Great Western	Railway Land N. of Middlesex Business Centre, Southall	SIL	PIL	5.72916
4	The Vale	The Vale, Acton	LSIS	NA	12.7463
5	South Acton	Stirling Road, South Acton	LSIS	NA	13.0244
5	South Acton	S. of Bollo Lane, Acton	LSIS	NA	0.771094
6	Trumpers Way	Waterside Trading Centre, Trumpers Way, Hanwell	LSIS	NA	6.4455
6	Trumpers Way	Trumpers Way, Hanwell	LSIS	NA	0.822032
7	International Trading Estate	International Trading Estate, Southall	LSIS	NA	19.72
8	Southbridge Way	Southbridge Way, Southall	LSIS	NA	4.13898
9	Bridge Road Industrial Estate	Bridge Road, Southall	LSIS	NA	12.5723

Table 10 – Mineral Aggregates Distribution Sites

Ref. No.	Name
1	Horn Lane
2	Park Royal Road
3	Willesden Rail Depot

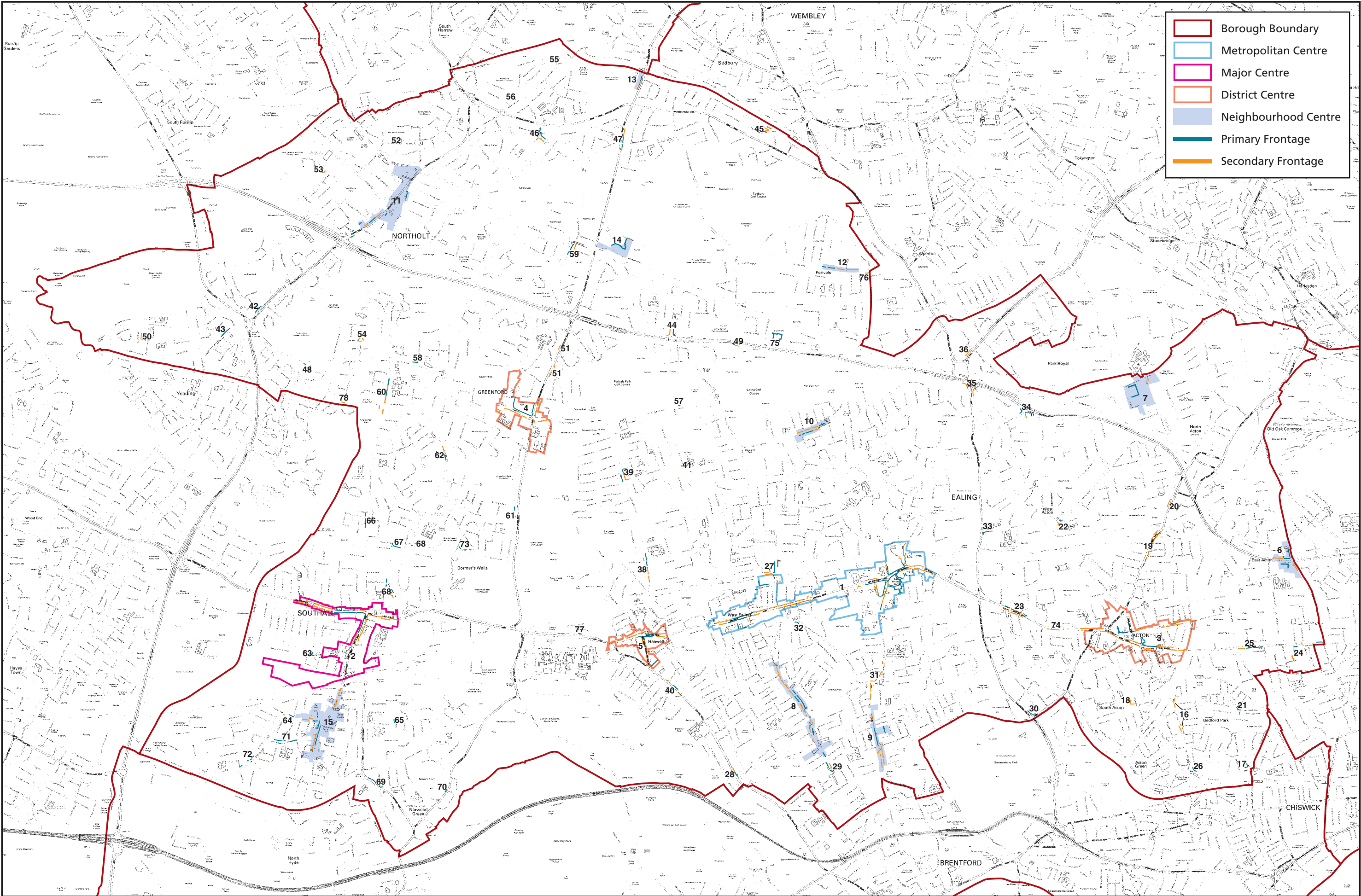


Table 11 – Shopping Frontages

Centre No.	Address	Classification
1 Ealing Metropolitan centre		
	1-4 (consec) The Parade, 30-49 consec Haven Green and 1-4 New Ealing Broadway	Secondary
	New Ealing Broadway 6-12	Primary
	43-48 (consec) The Mall	Secondary
	1-42 (consec) The Broadway including the entire Arcadia Centre & Springbridge Road frontage	Primary
	Central Chambers 1-10	Secondary
	37-45 (odd) Bond Street	Primary
	1-35 (odd) Bond Street	Secondary
	2-22 (even) Bond Street	Secondary
	1-15 (consec) The Green	Secondary
	16-26 (consec) The Green	Primary
	2-12 (even) Spring Bridge Road	Secondary
	14-38 (even) New Broadway	Secondary
	1-31 (odd) New Broadway	Primary
	33-57 (odd) New Broadway	Primary
	71-81 (odd) New Broadway	Secondary
	1-8 (consec) Culmington Parade	Secondary
	123-169 (odd) Uxbridge Road, West Ealing	Secondary
	1-41 (odd) Broadway, West Ealing	Secondary
	105-129 (odd) Broadway, West Ealing	Secondary
	2-12 (even) Melbourne Avenue	Primary
	Waitrose Superstore, Alexandria Road, W13	Primary
	53-57 (odd) Drayton Green Road & 51-57 (consec) Manor Road	Secondary
	51-62 (consec) The Mall	Secondary
	64-71 (consec) The Mall & 43-53 (consec) The Broadway	Secondary
	54-79 (consec) The Broadway	Primary
	1-82 Ealing Broadway Centre	Primary
	1-23 (consec) High Street	Secondary
	23-45 (consec) High Street	Primary
	1-12 (consec) Oak Road	Primary
	The Town House, Natwest Bank & 1-20 The Mall (consec)	Secondary
	171-217 (odd) Uxbridge Road, West Ealing	Secondary
	76-84 (even) & 94-122 (even) Uxbridge Road, West Ealing	Secondary
	124-162 (even) Uxbridge Road, West Ealing	Secondary
	1-7 (consec) & 12-17 (consec) Leeland Road, West Ealing	Secondary
	2-118 (even) Broadway & 1-2 Bedford House, West Ealing	Secondary
	20-62 (even) Broadway, West Ealing	Secondary
	64-110 (even) Broadway, West Ealing	Primary
	112-128 (even) Broadway, West Ealing	Secondary
	130-156 (even) Broadway, West Ealing	Secondary
	43-103 (odd) Broadway, West Ealing	Primary
	44-54 (even) Drayton Green Road, West Ealing & 42 Hastings Road	Secondary
2 Southall Major Centre		
	28-32 (even) The Broadway, Southall	Secondary
	4-26 (even) The Broadway, Southall	Secondary
	2-42 (even) High Street, Southall	Secondary
	1-25 (odd) The Broadway, Southall	Primary
	27-89 (odd) The Broadway, Southall	Primary

Centre No.	Address	Classification
	88-128 (even) The Broadway, Southall	Secondary
	2-50 (even) South Road, Southall	Primary
	52-88 (even) South Road, Southall	Secondary
	31-57 (odd) South Road, Southall	Secondary
	45-63 (odd) The Green, Southall	Secondary
	34-86 (even) The Broadway, Southall	Primary
	44-96 (even) High Street, Southall	Secondary
	91-157 (odd) The Broadway, Southall	Secondary
	159-199 (odd) The Broadway, Southall	Secondary
	130-168 (even) The Broadway, Southall	Secondary
	3-29 (odd) South Road, Southall	Secondary
	13-33 (odd) The Green, Southall	Secondary
3 Acton District Centre		
	80-124 (even) High Street, Acton	Primary
	1-21 (consec) Oaks Shopping Centre, Acton	Primary
	150-170 (even) High Street, Acton	Secondary
	172-186 (even) High Street, Acton	Secondary
	264-278 (even) High Street, Acton	Secondary
	1-21 (odd) High Street, Acton	Secondary
	23-53 (odd) High Street, Acton	Secondary
	121-137 (odd) High Street, Acton	Secondary
	173-189 (odd) High Street, Acton	Secondary
	217-239 (odd) High Street, Acton	Secondary
	241-267 (odd) High Street, Acton	Secondary
	273-279 (odd) High Street, Acton	Secondary
	1A-9 (consec) Market Place, Acton	Primary
	10 Market Place, Acton	Primary
	3-21 King Street (Morrisons), Acton	Primary
	23-31 (odd) King Street (PO), Acton	Primary
	16-28 (even) Crown Street, Acton	Primary
	1-33 (odd) Horn Lane, Acton	Primary
	2-8 (even) Horn Lane, Acton	Secondary
	17-31 (odd) Churchfield Road, Acton	Secondary
	33-63 (odd) Churchfield Road, Acton	Secondary
	65-75 (odd) Churchfield Road, Acton	Secondary
	2-12 (even) Churchfield Road, Acton	Secondary
	14-26 (even) Churchfield Road, Acton	Secondary
	28-46 (even) Churchfield Road, Acton	Secondary
	124-138 (even) Churchfield Road, Acton	Secondary
	140-144 (even) Churchfield Road	Primary
	104-122 (even) Churchfield Road	Secondary
	88-102 (even) Churchfield Road	Secondary
	36-78 (even) High Street, Acton	Secondary
	139-171 (odd) High Street, Acton	Secondary
	191-211 (odd) High Street, Acton	Secondary
4 Greenford District Centre		
	2-4 (even) Oldfield Lane South, Greenford	Primary
	2-84 (even) Broadway, Greenford	Primary

Centre No.	Address	Classification
	19-51 (odd) Broadway, Greenford	Secondary
	322-328 (even) Ruislip Road East, Greenford	Secondary
	'The Stall', Greenford Road	Primary
	177-229 (odd) Greenford Road	Primary
	426-440 (even) Greenford Road	Secondary
	309, 313-317 (odd) Ruislip Road East, Greenford	Secondary
	300-318 (even) Ruislip Road East	Secondary
	414-424 (even) Greenford Road, Greenford	Secondary
	432-482 (even) Greenford Road, Greenford	Secondary
	53-69 (odd) The Broadway, Greenford	Secondary
	5-13 (odd) Ruislip Road, Greenford	Secondary
	2-12 (even) Ruislip Road, Greenford	Secondary
	176-182 Mansell Road, Greenford	Secondary
	484-526 (even) Greenford Road, Greenford	Secondary
	1-17 (odd) & Red Lion PH The Broadway, Greenford	Secondary
5 Hanwell District Centre		
	1-7 (consec) Broadway, Hanwell	Secondary
	151-161 (odd) Broadway, Hanwell	Secondary
	110-120 (even) The Uxbridge Road, Hanwell	Primary
	122-132 (even) The Uxbridge Road, Hanwell	Primary
	134-142 (even) The Uxbridge Road, Hanwell	Secondary
	98-108 (even) The Uxbridge Road, Hanwell	Primary
	103-149 (odd) The Uxbridge Road, Hanwell	Primary
	11a-25 (odd) Boston Road, Hanwell	Secondary
	1-11 (odd) Boston Road, Hanwell	Primary
	52-60 (odd) Boston Road, Hanwell	Primary
	44-50 (even) Boston Road, Hanwell	Secondary
	75-109 (odd) Boston Road, Hanwell	Primary
	3-21 (odd) Broadway Buildings, Hanwell	Secondary
	62 Boston Road (McCann's PH), Hanwell	Secondary
	54-88 Uxbridge Road, Hanwell	Secondary
	90-94 (Lidl) Uxbridge Road, Hanwell	Secondary
	79-101 (odd) Uxbridge Road, Hanwell	Secondary
	165-191 (odd) Uxbridge Road, Hanwell	Secondary
	203-217 (odd) Uxbridge Road, Hanwell	Secondary
	The Viaduct PH, Uxbridge Road, Hanwell	Secondary
	174-176 Uxbridge Road, Hanwell	Secondary
	27-51 (odd) Boston Road, Hanwell	Secondary
6 East Acton Neighbourhood Centre		
	51-79 Old Oak Common Lane, East Acton	Primary
	2-16 Western Avenue, East Acton	Primary
	Sainsbury's Homebase, Western Avenue, East Acton	Primary
	171-209 Old Oak Road & 16-18 Orchard Place, Old Oak Common Lane	Secondary
	18-48 Western Avenue, East Acton	Secondary
7 Park Royal Neighbourhood Centre		
	63-69 Park Royal Road, NW10	Secondary
	2-20 (even) Western Avenue (Asda), NW10	Primary
8 Northfields Neighbourhood Centre		
	90-112 (even) Northfield Avenue, W13	Primary

Centre No.	Address	Classification
	66-88 (even) Northfield Avenue, W13	Secondary
	30-42 (even) Northfield Avenue, W13	Secondary
	44-64 (even) Northfield Avenue, W13	Secondary
	93-109 (odd) Northfield Avenue, W13	Primary
	111-129 (odd) Northfield Avenue, W13	Primary
	116-136 (even) and 156-160 (even) Northfield Avenue, W13	Secondary
	138-160 (even) Northfield Avenue, W13	Secondary
	135-161 (odd) Northfield Avenue & 101 Elers Road, W13	Primary
	215-227 (odd) Northfield Avenue	Primary
	261-271 (odd) Northfield Avenue, W5	Primary
	1-1a Leighton Road & 2-10 (even) Northfield Avenue, W13	Secondary
	12-20 (even) Northfield Avenue & 1 Northfield Road & unit adjacent & 22a-28 (even) Northfield Avenue	Secondary
	1-5 (odd) Northfield Avenue	Secondary
	182-196a (even) Northfield Avenue	Secondary
	202-208 (even) Northfield Avenue, W13	Secondary
	193-199 (odd) Northfield Avenue, W13	Secondary
	226-236 (even) Northfield Avenue	Secondary
9 South Ealing Neighbourhood Centre		
	96-152 (even) South Ealing Road	Primary
	89-95 (odd) South Ealing Road	Primary
	139-159 (odd) South Ealing Road	Secondary
	177-195 (odd) South Ealing Road	Secondary
	84-94 (even) South Ealing Road	Secondary
	72-82 (even) South Ealing Road & station units	Secondary
	161-175 (odd) South Ealing Road	Secondary
	2-10 (even) The Quadrant & 156-160 (even) South Ealing Road	Secondary
	172-194 (even) South Ealing Road	Secondary
10 Pitshanger Lane Neighbourhood Centre		
	108-124 (even) Pitshanger Lane	Primary
	105- 111 & 115-141 (odd) Pitshanger Lane	Primary
	1-3 Albert Terrace, Pitshanger Lane	Primary
	145-157 Pitshanger Lane	Secondary
	38-60 Pitshanger Lane	Secondary
	62-82 Pitshanger Lane	Secondary
	84-106 Pitshanger Lane	Secondary
11 Northolt Neighbourhood Centre		
	60-70 (even) & 108-110 Church Road, Northolt	Secondary
	2-20 (even) Mandeville Road, Northolt	Secondary
	11-15 (odd) Mandeville Road	Primary
	11 Station Parade & 207-211 (odd) Ealing Road, Northolt	Secondary
	32-58 (even) Church Road, Northolt	Primary
	204-224 (even) Church Road, Northolt	Primary
	147-169 (odd) Church Road, Northolt	Primary
	139-145 & 171-177 (odd) Church Road	Secondary
	Todd Doors Ltd, Rear of 112-116 Church Road, Northolt	Primary
	1-10 (consec) Station Parade, Northolt	Primary
12 Perivale Neighbourhood Centre		
	68-84 (even) Bilton Road, Perivale	Primary
	86-96 (even) Bilton Road, Perivale	Primary

Centre No.	Address	Classification
	42-66 (even) Bilton Road, Perivale	Secondary
	6-40 (even) Bilton Road, Perivale	Secondary
13 Sudbury Hill Neighbourhood Centre		
	1269-1301 (odd) Greenford Road, Sudbury Hill	Primary
	1211-1261 (odd) Greenford Road, Sudbury Hill	Secondary
14 Westway Cross Neighbourhood Centre		
	Westway Cross, Greenford	Primary
15 King Street Neighbourhood Centre		
	2-20 (even) King Street	Primary
	28-64 (even) King Street and 1-1a Western Road	Secondary
	66-80 (even) King Street	Secondary
	13-35 (odd) King Street	Primary
	37-73 (odd) King Street	Primary
	21-45 (odd) Featherstone Road, Southall	Secondary
	20-30 (even) Featherstone Road, Southall	Secondary
	1-11 (odd) Featherstone Road, Southall	Primary
Local Centres		
16	188-206 (even) Acton Lane	Secondary
16	251-259 (odd) Acton Lane	Secondary
16	199-203 Acton Lane (odd)	Secondary
16	177-183 Acton Lane (odd)	Secondary
16	261-273 (odd) Acton Lane & 199 Southfield Road & 226 Southfield Road	Secondary
17	1-11 (consec) Bedford Corner	Primary
18	96-118 (even) Bollo Bridge Road	Secondary
19	134-140 (even) Horn Lane, W3	Primary
19	142-154 (even) Horn Lane, W3	Secondary
19	156-164 (even) Horn Lane, W3	Secondary
19	186-220 (even) Horn Lane, W3	Secondary
19	219-237 (odd) Horn Lane, W3	Secondary
19	243-263 (odd) Horn Lane, W3	Secondary
20	311-333 Horn Lane (odd)	Secondary
21	60-70 (even) Southfield Road, W4	Primary
22	1-4 (consec) Station Parade, Noel Road, W3	Secondary
22	5-8 (consec) Station Parade, Noel Road W3	Primary
23	5-13 (consec) Station Parade, Ealing Common, W5	Secondary
23	1-9a (consec) Station Buildings, Uxbridge Road	Secondary
23	1a and 1-4 (consec) The Bridge & 1-4 (consec) Station Parade	Primary
23	14-18 (consec) Station Parade & 380 Uxbridge Road	Primary
23	19-24 (consec) Station Parade, Uxbridge Road, W5	Secondary
23	429-437 (odd) Uxbridge Road & 1-5 (consec) Grosvenor Parade	Secondary
24	2-14 (even) The Vale, W3	Primary
24	Units 7-10 (consec) Acton Vale Industrial Park, Cowley Road	Secondary
24	Tesco, 31 – 41 The Vale	Primary
24	1-4 Eastvale, Uxbridge Road	Secondary
24	1-17 (odd) The Vale	Secondary
25	113-141 The Vale, W3	Primary
25	143-159 The Vale, W3	Primary
25	161-177 The Vale, W3	Secondary
26	61-65 (consec) South Parade & Costcutter	Primary

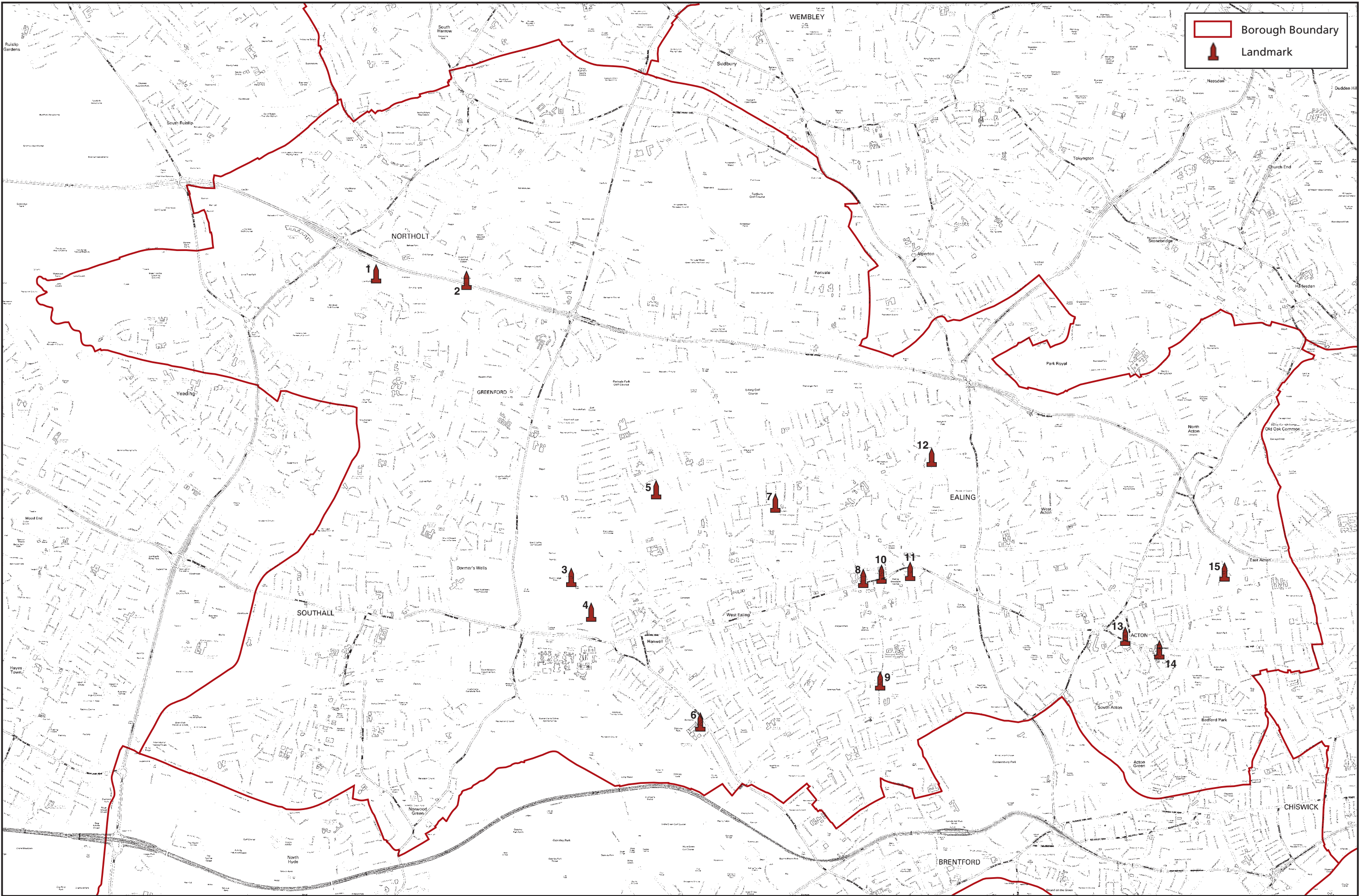
Centre No.	Address	Classification
27	4-24 (even) The Avenue, W13	Primary
27	1-11 (consec) Castle Hill Parade & 13-27 The Avenue	Primary
27	1-4 (consec) Manor Road, 1B Argyle Road & Land to rear of 1 Argyle Road	Secondary
28	9-17 (consec) Boston Parade, Boston Road	Primary
28	6-8 (consec) and 18-24 (consec) Boston Parade, Boston Road	Secondary
29	129-141 (odd) Little Ealing Lane, W5	Primary
29	287-297 (odd) Northfield Avenue, W5	Secondary
29	304-320 (even) Northfield Avenue & 366-368 Windmill Road	Primary
30	1-14 Park Parade, Gunnersbury Avenue, W3	Primary
31	34-50 St Mary's Road, W5	Secondary
31	58-66 St Mary's Road, W5	Secondary
31	75 St Mary's Road, W5	Primary
31	76-88 and 94-96 (even) St Mary's Road, W5	Secondary
31	2-28 (even) South Ealing Road, W5	Secondary
31	36-50 (even) South Ealing	Secondary
31	67-73 St Mary's Road & 2 Ranelagh Road, W5	Primary
32	1-8 (consec) St. John's Parade, Mattock Lane	Primary
33	2-4 (consec) Boileau Parade	Primary
33	7-10 (consec) Queens Parade, Queen's Drive	Secondary
33	11-23 (consec) Queens Parade, Queen's Drive	Primary
34	1-4 (consec) Hanger Green & Park Royal Station Chambers	Primary
34	16-18 Hanger Green	Primary
34	5-11 (consec) Hanger Green	Secondary
35	1-15 (consec) Asbourne Parade, Hanger Lane, W5	Secondary
36	1-12 (consec) Norbreck Parade, NW10	Secondary
37	1-13 (consec) Royal Parade, W5	Secondary
38	25-47 (odd) Greenford Avenue, W7	Secondary
38	49-69 (odd) Greenford Avenue, W7	Secondary
38	71-85 (odd) Greenford Avenue, W7	Primary
38	87-111 (odd) Greenford Avenue, W7	Primary
38	72-80 (even) Greenford Avenue, W7	Secondary
39	327-337 (odd) Greenford Avenue, W7	Primary
39	326-354 (even) Greenford Avenue, W7	Primary
39	307-325 Greenford Avenue & 1-9 Bordars Road	Secondary
40	146-162 (even) Boston Road, W7	Secondary
40	163a, 165, 165b,165c and 167 Boston Road, W7	Primary
40	149-151 Boston Road	Secondary
41	187-188 Copley Close, W7	Secondary
42	474-500 Church Road, Northolt	Primary
43	479-521 (odd) Yeading Lane	Primary
44	2-24 (even) Medway Parade, Perivale	Primary
44	1-23 (odd) MedwayParade, Perivale	Secondary
45	10-13 (consec) Odeon Parade, Allendale Road, Greenford	Primary
45	1-8 (consec) The Parade, Sudbury Heights Avenue	Secondary
45	2-9 (consec) Odeon Parade, Sudbury Heights Avenue	Secondary
46	15-57 (odd) Oldfields Circus, Northolt	Primary
46	63-89 Oldfield Circus	Secondary
47	1352-1368 Greenford Road	Primary
47	1370-1412 Greenford Road	Secondary

Centre No.	Address	Classification
47	1290-1296 Greenford Road	Primary
47	1276-1288 Greenford Road	Secondary
48	Highview Shops, 167-169 Byron Road, Northolt	Primary
49	1a-5 (consec) Central Parade, Western Avenue, Perivale	Secondary
50	21-33 (odd) Down Way, Northolt	Secondary
51	397-413 (odd) Greenford Road, Greenford	Secondary
51	600-614 (even) Greenford Road, Greenford	Secondary
51	618-626 (even) Greenford Road, Greenford	Secondary
52	1-11 (odd) Haydock Green, Northolt	Secondary
53	1-8 Ridgeway Walk, Northolt	Secondary
54	59-61 (odd) Shadwell Drive, Northolt	Secondary
54	71-73 (odd) Shadwell Drive, Northolt	Secondary
55	22-28 (even) Wood End Gardens, N Greenford	Secondary
56	121-123 Wood End Lane, Northolt	Secondary
57	Single shop in Osprey Ct -91-93 Ruislip Road East, W13	Primary
58	234-250 Ruslip Road, Greenford	Primary
59	247-265 (odd) Oldfield Lane North, Greenford	Primary
59	231-245 (odd) Oldfield Lane North, Greenford	Primary
59	370-388 (even) Oldfield Lane North, Greenford	Secondary
60	428-440 (even) Lady Margaret Road, Southall	Secondary
60	458-478 (even) Lady Margaret Road, Southall	Secondary
60	480-492 (even) Lady MargaretRoad, Southall	Primary
60	494-506 (even) Lady Margaret Road, Southall	Secondary
60	508-522 (even) Lady Margaret Road, Southall	Primary
60	453-461 (odd) Lady Margaret Road, Southall	Secondary
61	35 Greenford Road, Greenford	Secondary
61	39-45d Greenford Road, Greenford	Primary
61	44-60 Greenford Road, Greenford	Secondary
62	233-251 Allenby Road, Southall	Primary
62	253-269 Allenby Road, Southall	Secondary
63	106-114d (even) Beaconsfield Road, Southall	Primary
63	79 Beaconsfield Road, Southall	Secondary
64	2-22 (even) Dudley Road, Southall	Primary
64	13-15 (odd) Dudley Road, Southall	Secondary
65	29-41 Hunt Road, Southall	Primary
66	177-203 (odd) Lady Margaret Road & Pharmacy, Southall	Primary
67	1-18 (consec) North Parade, North Road, Southall	Primary
68	60-70 (even) North Road, Southall	Primary
68	56 and 56a North Road, Southall	Primary
68	89-99a (odd) North Road, Southall	Primary
68	39-49 (odd) North Road, Southall	Secondary
68	Jalandhar Junction, Southall	Secondary
69	137-155 (odd) Norwood Road, Southall	Primary
69	175-181 (odd) Norwood Road, Southall	Primary
70	19-29 Tentelow Lane, Southall	Primary
71	71-81 (odd) Western Road, Southall	Primary
71	91-99 Western Road, Southall	Secondary
71	70-96 (even) Western Road, Southall	Primary
71	64-66 (even) Western Road, Southall	Primary

Centre No.	Address	Classification
71	39-55 (odd) Western Road, Southall	Primary
71	55, 59 and 59d Western Road, Southall	Secondary
72	166-174 and 202 (even) Western Road, Southall	Primary
72	183-185 (odd) Western Road, Southall	Primary
72	212-214 (even) Western Road, Southall	Primary
72	240-244 (even) Western Road, Southall	Primary
72	137-137a Western Road, Southall	Secondary
72	161-165 Western Road	Secondary
73	1-5 (consec) Winford Parade, Telford Road, Southall	Primary
74	355-383 (odd) Uxbridge Road	Secondary
74	296-328 (even) Uxbridge Road, Acton	Secondary
75	Tesco, Former Hoover Factory, Western Avenue, Greenford	Primary
76	1-7 (odd) Bilton Road	Secondary
77	441-447 (odd) Uxbridge Road, Southall	Primary
78	5-76 Higham Mews, Northolt	Secondary

Table 12 – Landmarks

Ref. No.	Location
1	Earthen Mounds, Northala Fields, Western Avenue, UB5
2	The Metropolitan Centre, Bristol Road, Greenford UB6
3	St Mary's Church, Church Road, Hanwell W7
4	Wharncliffe Viaduct
5	Hanwell Community Centre Tower, W7
6	St Thomas's Church, Boston Road, W7
7	St Stephen's Church, W13 (now St Stephen's Court)
8	Ealing Town Hall, Uxbridge Road, W5
9	St Mary's Church, St Mary's Road, W5
10	Christ the Saviour Church, New Broadway, W5
11	Polish Catholic Church, Windsor Road, W5
12	The Water Tower, Hillcrest Road, W5
13	St Mary's Church, The Mount, W3
14	Acton Town Hall, W3
15	St Dunstan's Church, Friars Place Lane, W3



Appendix One:

The table below has been prepared to identify the relevant ‘policy hook’/antecedents for each of the designations/layers shown on the Policies Map. The source of these policies include the adopted London Plan, Ealing’s Development (Core) Strategy, Development Management DPD and the Development Sites DPD. A separate column for the Development Sites DPD has been omitted, as only the Development Sites designation relies on this DPD for its policy hook. The primary ‘policy hook(s)’ for each designation is highlighted in bold. Other policies of relevance are identified in italics. Please note that whilst other policies of relevance have been included, this list is not exhaustive.

Designation/Layer	London Plan (2011)	Development Strategy	Development Management DPD
Green Belt	2.18 ‘Green Infrastructure: The Network of Open and Green Space’ <i>7.16 ‘Green Belt’</i> <i>Map 2.8 ‘London’s strategic open space network’</i>	5.1 ‘Protect and Enhance Metropolitan Green Belt’ Map 7	2.18 ‘Green Infrastructure : The Network of Open and Green Spaces (Local Variation)’
Metropolitan Open Land	2.18 ‘Green Infrastructure: The Network of Open and Green Space’ <i>7.17 ‘Metropolitan Open Land’</i> <i>Map 2.8 ‘London’s strategic open space network’</i>	5.2 ‘Protect and Enhance Metropolitan Open Land (MOL)’	2.18 ‘Green Infrastructure : The Network of Open and Green Spaces (Local Variation)’
Public Open Space	2.18 ‘Green Infrastructure: The Network of Open and Green Space’ 7.18C ‘Protecting Local Open Space and Addressing Local Deficiency’	<i>5.5 ‘Promoting Parks, Local Green Space and Addressing Deficiency’</i>	2.18 ‘Green Infrastructure : The Network of Open and Green Spaces (Local Variation)’
Proposed Public Open Space	2.18C ‘Green Infrastructure : The Network of Open and Green Spaces’ 7.18C ‘Protecting Local Open Space and Addressing Local Deficiency’	<i>5.5 ‘Promoting Parks, Local Green Space and Addressing Deficiency’</i>	2.18 ‘Green Infrastructure : The Network of Open and Green Spaces (Local Variation)’
Areas of Park Deficiency ⁱ	7.18C(b) ‘Protecting Local Open Space and Addressing Local Deficiency’. 2.18 ‘Green Infrastructure : The Network of Open and Green Space’	<i>5.5 ‘Promoting Parks, Local Green Space and Addressing Deficiency’</i>	<i>7D ‘Open Space’ – accompanying text</i>
Community Open Space	7.18C(a) ‘Protecting Local Open Space and Addressing Local Deficiency’ 7.22C ‘Land for Food’	<i>5.6 ‘Outdoor Sports and Active Recreation’</i>	2.18 ‘Green Infrastructure : The Network of Open and Green Spaces (Local Variation)’
Green Corridor	<i>2.18 ‘Green Infrastructure: The Network of Open and Green Space’</i> 7.19F(e) ‘Biodiversity and Access to Nature’	5.3 ‘Protect & Enhance Green Corridors’ Map 7	2.18 ‘Green Infrastructure : The Network of Open and Green Spaces (Local Variation)’
Acton Green Corridor Policy Area		5.3 ‘Protect & Enhance Green Corridors’ Map 7	
Blue Ribbon Network	<i>2.18 ‘Green Infrastructure: The Network of Open and Green Space’</i> Map 7.5 <i>7.24 ‘Blue Ribbon Network’</i> <i>7.25 ‘Increasing the use of the Blue Ribbon Network for passengers and tourism’</i> <i>7.26 ‘Increasing the use of the Blue Ribbon Network for Freight Transport’</i> <i>7.27 ‘Blue Ribbon Network: Supporting infrastructure and recreational use’</i> <i>7.28 ‘Restoration of the Blue Ribbon Network’</i> <i>7.30 ‘London’s canals and other rivers and waterspaces’</i>	5.3 ‘Protect & Enhance Green Corridors’ <i>Map 7</i>	2.18 ‘Green Infrastructure : The Network of Open and Green Spaces (Local Variation)’

Designation/Layer	London Plan (2011)	Development Strategy	Development Management DPD
Site of Importance for Nature Conservation	7.19F ‘Biodiversity and Access to Nature’	<i>5.4 ‘Protect the Natural Environment – Biodiversity and Geodiversity’</i>	2.18 ‘Green Infrastructure : The Network of Open and Green Spaces (Local Variation)’
Heritage Land	7.8A, F & G ‘Heritage Assets and Archaeology’	<i>Map 7 1.2 (g)</i>	2.18 ‘Green Infrastructure : The Network of Open and Green Spaces (Local Variation)’ <i>7C ‘Heritage’</i>
Regionally Important Geological Site	7.20B (b) Geological Conservation’	5.4 (b) ‘Protect the Natural Environment – Biodiversity and Geodiversity’	-
Archaeological Interest Area	7.8A, F & G ‘Heritage Assets and Archaeology’	-	<i>7C ‘Heritage’</i>
Landmarks	-	-	7.12J ‘Implementing the London View Management Framework
Town Centre	2.15D (a) ‘Town Centres’ Map 2.6 Annex Two – London’s Town Centre Network <i>4.7 ‘Retail and Town Centre Development’</i> <i>4.8 ‘Supporting a successful and diverse retail sector’</i>	<i>1.1(d) ‘Spatial Vision for Ealing 2026’</i> <i>Key Diagram</i> <i>Map 4</i>	<i>4C ‘Main Town Centre Uses’</i>
Neighbourhood Centre	2.15D (b) ‘Town Centres’ <i>4.7 ‘Retail and Town Centre Development’</i> <i>4.8 ‘Supporting a successful and diverse retail sector’</i>	<i>1.1(d) ‘Spatial Vision for Ealing 2026’</i> <i>Key Diagram</i>	<i>4C ‘Main Town Centre Uses’</i>
Primary Shopping Frontage	2.15D (a) ‘Town Centres’ <i>4.8 ‘Supporting a successful and diverse retail sector’</i>	-	<i>4B ‘Retail’</i>
Secondary Shopping Frontage	2.15D (a) ‘Town Centres’ <i>4.8 ‘Supporting a successful and diverse retail sector’</i>	-	<i>4B ‘Retail’</i>
Strategic Industrial Location	2.17D ‘Strategic Industrial Locations’ Annex 3 Map 2.7	-	-
Locally Significant Industrial Area	4.4B (a) ‘Managing Industrial Land and Premises’	-	-
Preferred Industrial Locations	2.17D ‘Strategic Industrial Locations’ Annex 3 Map 2.7	-	-
Preferred Industrial Locations/Industrial Business Park	2.17D ‘Strategic Industrial Locations’ Annex 3 Map 2.7	-	-
Mineral Aggregate Distribution Site	5.20F ‘Aggregates’	-	-
Development Site ⁱⁱ	-	-	-

ⁱ This is not a designation per se, but rather derives from the main layers.

ⁱⁱ Policy ‘hook’ provided by Development Sites DPD

For further copies of this document please contact:

Planning Policy
Ealing Council
Perceval House
14/16 Uxbridge Road
London W5 2HL

Tel: 020 8825 5882

Website: ealing.gov.uk

Email: Planpol@ealing.gov.uk