

Ealing Climate Action and Sustainability progress report

2023 Update

Ealing Climate Action and Sustainability progress report

When we first published our Climate and Ecological Emergency Strategy in 2021, we engaged people across Ealing to ensure we were focusing on the most meaningful actions to address climate change in our borough. The challenges faced in the past two years have highlighted the greater need to work hand in hand with communities, to tackle the climate and energy crisis in an equitable way and inspire optimism.

A vision with a mission

This is the first progress report of the Ealing Council Climate and Ecological Emergency Strategy (climate strategy). We aim to share our journey so far as we reach our first milestones of activities described in our action plans. With the essential support from communities, partners across Ealing and colleagues in every corner of the council, we want to celebrate some first successes in improving our environmental impact as a borough.

We discuss our progress over the past two years, and we present our ambitions for how we would like things to look like in the future. Finally, we highlight where gaps exist, and further improvement is needed.

Structure and jargon

This report is structured around the five themes in our Climate and Ecological Emergency Strategy: Energy, Food, Nature, Travel and Waste. Each chapter refers to the United Nations Sustainable Development Goals (UN SDGs), which highlights the global importance of our local climate actions.

Climate change can be a jargon heavy topic, we have done our best to keep our language straightforward. In our climate strategy¹, we have included an entire section on definitions you may wish to review if any terms are unfamiliar.

Social and Climate Justice

Climate change is an issue that affects all of us, but how we are affected depends on factors such as income, ethnicity and geographic location. In London, those on lower incomes and minority ethnic groups are already experiencing poorer air quality, overheating or lack of access to green spaces. In Ealing, the same populations affected by current health, social and economic inequalities will be more likely to experience the worst impacts from climate change and face uneven barriers to positively contribute to climate action.



1. Climate and Ecological Emergency Strategy.
https://www.ealing.gov.uk/info/201304/climate_action/2691/ealing_s_climate_and_ecological_strategy#:~:text=Ealing%E2%80%99s%20climate%20and%20ecological%20strategy%20What%20we%20are,we%20feel%20we%20can%20make%20the%20most%20difference.

2. Visions for Northolt:
<https://www.visionsfornortholt.co.uk/projects.html#:~:text=Ealing%20Council%20and%20multiple%20local%20partners%20have%20secured,red,an%20create%20new%20jobs%20in%20the%20green%20economy.>

The council is committed to supporting community – led projects to address climate justice and ensure equitable access to the benefits of reversing climate change. We are piloting projects to tackle social and environmental issues such as active travel, access to green and growing spaces or lack of community cohesion. The Breaking Ground programme is designed to create a community-led environmental and social impact project to those most affected in the borough by climate change. Visions for Northolt² explores locally led ideas to reduce waste, pollution and carbon and create new jobs in the green economy. The Let's Go Southall project³ is experiencing community engagement success through the creation of a social movement to encourage people to get active and connect.



Enabling conditions for change through community, education and climate action

We are actively involved in establishing new community-led projects, designing new resources to assist local businesses and community organisations to reduce carbon emissions and using communications to encourage choices that benefit the planet. In practice, making climate action happen requires the active participation of many key groups. At Ealing, we have identified four key players: schools, community groups, businesses and adult education.

Our Climate and Ecological Emergency Strategy is a response to the people of Ealing demanding the council to get serious about climate change. To support and enable citizen action, we have begun an ongoing process to engage residents to share knowledge and develop solutions.

In 2021, we worked with community campaigners to launch ActForEaling⁴, a community climate hub, to publicise local activities and invite more Ealing residents to participate in the movement. This work includes launching a Green Schools Network for schools to share their progress on taking climate action and inspire each other. The council also created a hub for climate action news, the Climate Action tab on the Around Ealing website, to offer inspiration, information and actions that people can do or can join to help the environment.

To amplify our impact in the next two years, we are developing a new communication and engagement strategy for climate action with buy-in from all key players to include effective participation mechanisms. We will create a plan to ensure that the perspectives of a range of equalities groups are incorporated to engage with communities that previously have not participated in the climate change conversation. Within the council, we are updating and creating mandatory climate awareness training for all our employees.



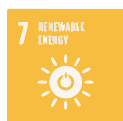
3. Let's go Southall:
<https://www.bing.com/search?q=lets+go+southall&cvid=f3db7ef55f5c49b0885478421b547e2f8&qs=edge.69i57j0l2j69i64j69i11004.2729j0j18pglt=43&FORM=ANNAB1&PC=U531>

4. ActForEaling: ActforEaling Climate Action Hub

Changing how we think about Energy

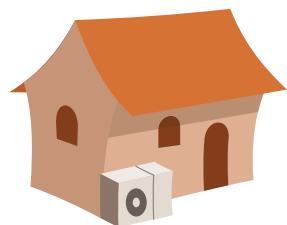
We will enable residents and businesses to reduce their energy usage by supporting the replacement of natural gas heating with low-carbon and renewable energy alternatives. We will use our regulatory powers to stimulate the growth of community energy networks and local energy generation. All new housing developments will be adapted to the effects of climate change.

Focus UN SDGs



Our progress towards a zero carbon future

Energy used to heat and power building in Ealing is one of the main contributors of carbon emissions in our borough. We need to move away from natural gas central heating and move towards low-carbon alternatives. In the past two years, we have made a good progress piloting projects for improving the energy use of our buildings.



Greening our homes

We have made good progress in improving home energy efficiency and installing renewable energy across the borough.

To support our energy transition, we rolled out over 1000 improvements to homes in the borough and offered 4 different programmes to help residents get funding for retrofitting their properties. Our free Healthy Homes Ealing service is available to all residents that provides advice on how to make your home more energy efficient and identifies which grants might be available.

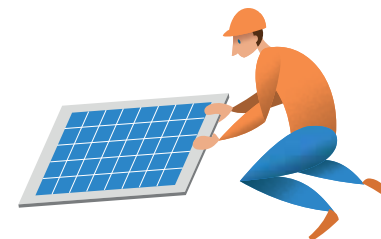
44 council owned homes are being given a "deep retrofit" on the Village Park Estate, including insulation and ventilation, low-carbon heating systems, and solar PV panels for on-site energy generation.

103 solar panel installations have been made possible across the borough, through the Solar Together scheme, between 2018 and 2022.



Greening public buildings

Over the past two years we secured c. £16m in funding for retrofit projects, including solar power and other low carbon alternatives.



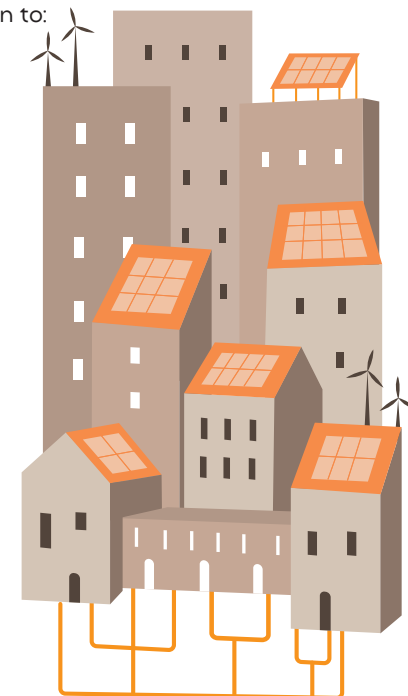
We secured Public Sector Decarbonisation Scheme funding to deliver energy-efficient projects at 14 high consumption council offices in Ealing. Projects to replace fossil fuel heating systems with lower carbon alternatives for a further eight schools and four sheltered housing blocks will complete in summer 2023. We are already working on getting more funding to reach our long-term goal of 30 locations by the end of 2024.

Schools are also actively participating in the challenge to cut their emissions with 17 schools having installed solar panels with help from Ealing Transition's Solar Schools programme, creating potential savings of 134,910kg of CO₂ each year.

Our 2023-2026 climate action highlights

We are striving to support more schools, households and businesses in the transitions to energy efficiency and replacement of natural gas to renewable energy sources. In the next two years we plan to:

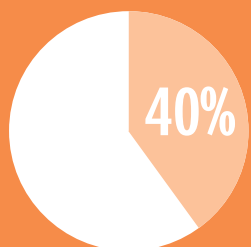
- 1 Deliver energy audits in 60 schools and 20 leisure sites to set out plans to decarbonise heating systems
- 2 Deliver eight retrofits on schools to reduce energy demand and decarbonise heating
- 3 Strengthen our Healthy Homes Ealing programme to deliver more home visits and energy efficiency measures to residents
- 4 Ensure our new buildings meet zero carbon ambitions
- 5 Develop a council-led scheme to encourage and incentivise Ealing residents in privately owned properties to install solar PV.



Energy

Research by the Committee on Climate Change showed that 40% of the UK's carbon emissions come from households, with almost half of these from heating. By tackling the issue of homes that do not heat well or retain heat, we will reduce the amount of carbon emissions used to heat them. This has become one of our top priorities, to help support those in fuel poverty and improve the energy efficiency of homes in Ealing.

The Energiesprong programme focuses on insulating homes and using renewable technology to reduce the dependence on fossil fuel heating. Energiesprong homes aim to keep a steady 21 degrees Celsius inside the house, through a series of insulating measures, whilst electricity is generated through solar panels that are installed on the roof. Work is currently underway for 44 council-owned houses and flats, which will support residents with cutting down their emissions and living in a more comfortable home, whilst delivering the vision for clean energy in Ealing.



UK carbon emissions from households



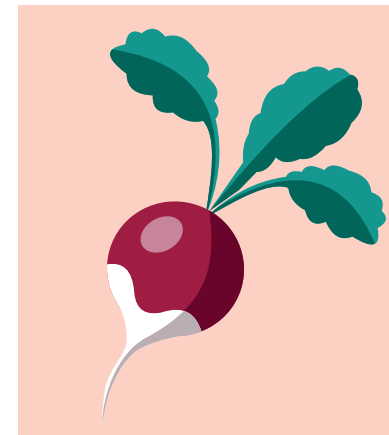
Food

Ealing Allotments Partnership has been actively supporting Ealing's Food strategy. Village Park allotments in our borough connects with local charities and community groups to deliver surplus grown food from their sites to increase the number of people who can access fresh fruit and vegetables.

Village Park allotments recorded more than 40kg of vegetables delivered to local organisations last summer! Fresh produce includes leeks, lettuce, radish, rhubarb, potatoes, cucumbers, tomatoes, chard, and a fair few courgettes! The Village Park allotment's manager says they have actively encouraged other allotment sites to send excess produce to charity. This effectively addresses the food waste issue in the borough, whilst also reducing food-related emissions as the crop is local and seasonal, so these vegetables have a shorter travel distance.



40kg
vegetables



Food for the Future

We will harness the power of the communities in Ealing who have a key role in growing awareness about a more sustainable food system. Ealing will have a thriving food partnership, who encourages access and choice of healthy, seasonal, local and sustainable food across the borough. We will support access to food growing spaces, educational experiences, as well as markets and restaurants which offer healthy food.

Focus UN SDGs



Linking food and climate change

Food is a major determinant of our health outcomes and is a significant contributor of GHG to our atmosphere. Around 14.5% of all GHG globally comes from meat and dairy production⁵, it essential to increase the amount of fruit and vegetables eaten in the borough and reduce the amount of meat and dairy products. But more than this, food has an important cultural and social meaning for many.



Collaborating for sustainable food in Ealing

We are on track to set up a food partnership and bring a greater visibility to sustainable food across the borough.

We started our journey into food and climate as a collaborative approach with Ealing's food community. Currently, we have a growing group of around 20 stakeholders across the borough who will work together to create a food partnership which will support the borough in reducing food related GHG emissions while also delivering on the co-benefits of health and social equity. We have appointed a new council lead for the Food Partnership to support this borough-wide collaboration.



Our collaborative work has been recognised in the latest nationwide 'Every Mouthful Counts' report by Sustain⁶, placing us in the small group of local authorities leading the way in supporting and creating more sustainable ways for growing, selling and delivering food across the borough.

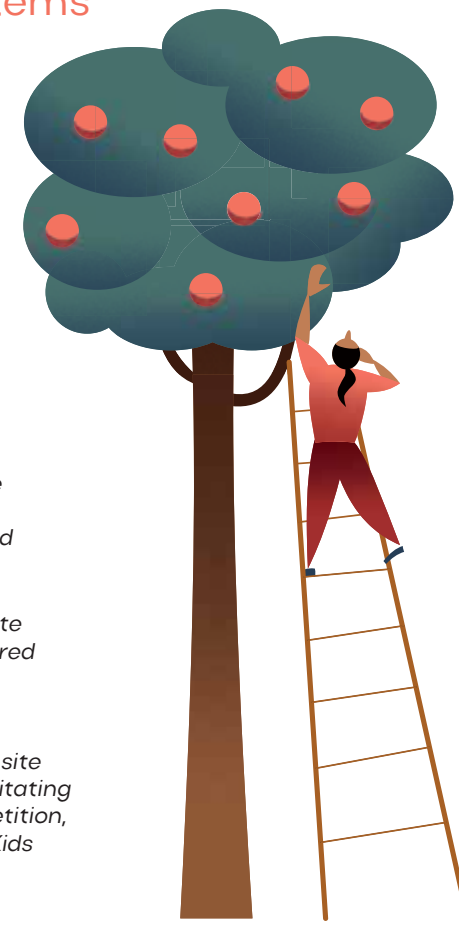
Growing access to healthy, seasonal, local and and sustainable food

We are creating 10 new community growing spaces across Ealing.

On the ground, we have begun work to deliver ten new community growing spaces. At the time of writing this report, three sites, Western Road Community Garden, Dean Gardens and Jerome Allotments, are being prepared and put into action in time for 2023 growing season.

Our 2023-2026 key activities supporting sustainable food systems

- 1 Connect Ealing's food community by creating a food partnership, focused on reducing GHG, and greater visibility on healthy, seasonal, local and sustainable food across the borough
- 2 Lead a food mapping exercise to gain a full understanding of the borough's food system and identify potential physical spaces for siting local food markets
- 3 Commission a Green Infrastructure Strategy covering the full range of green infrastructure assets required for food growing provision
- 4 Identify and recommend appropriate food education materials to be shared with the public
- 5 Increase Ealing schools' access to practical food education including; site visits, outreach within schools, facilitating the Cultivate Ealing schools' competition, Grow Some Share Some, Growing Kids and Cooking Kids programmes.



⁵ Food and Agriculture Organization of the United Nations: <http://www.fao.org/news/story/en/item/197623/jcode/>

⁶ Every Mouthful Counts Report: <https://www.sustainweb.org/publications/every-mouthful-counts-2022/>

Learning with Nature

We are continuing to reshape and modernise our approach to management and maintenance of our green space network to maximise carbon capture, enhance wildlife value, provide flood resilience and ensure spaces are equipped to sustainably meet the needs and aspirations of communities.

Focus UN SDGs



Addressing an ecological emergency by protecting biodiversity

We launched a new Biodiversity Action Plan to address the ecological emergency to protect and enhance plant and animal diversity.

With the launch of the refreshed Biodiversity Action Plan (BAP) in 2022, the council partnered with Ealing Wildlife Group to deliver free talks on Ealing's biodiversity in primary and secondary schools, to raise awareness and encourage young people to connect with nature. The Ealing BAP was developed through consultation with internal and external stakeholders, including local experts, conservation and community groups, land managers and different services within the council. It outlines the current and future priorities for habitats and species.



Greening our urban places

We are increasing the tree canopy by planting 2,500 street trees each year.



Science agrees, more is better when it comes to trees. Trees in local streets, parks and green spaces are crucial for providing shade during warm summer days, reducing air pollution, providing habitat, absorbing carbon and improving mental and physical wellbeing. We are reviewing every square meter of the borough to identify areas to plant more trees. To help us reach our commitment to plant 50,000 trees by 2026, we launched a collaboration with Trees for Streets in November 2022, enabling residents to sponsor a tree.

Biodiversity Net Gain (BNG)

We are preparing for the new Biodiversity Net Gain legislation which strengthens the link between development and biodiversity.

The importance of biodiversity is highlighted by Ealing Council declaring a climate and ecological emergency. There is a growing awareness of biodiversity loss particularly in relation to new construction. From November 2023 development in England will have to deliver a minimum requirement of 10% biodiversity net gain (BNG). This gain will help to ensure we prevent losing valuable biodiversity and enhance our natural environment.



Ealing is currently developing local BNG policy and collecting evidence to inform this. Part of this involves work by the Parks team, who are helping to establish a biodiversity baseline by assessing the SINCS (Site of Importance for Nature Conservation) in the borough.

Our 2023 – 2026 highlights for greener Ealing

We will strengthen our connection with nature by evolving our approach to management and maintenance. Over the next two years we will:

- 1 Plant 50,000 trees over the three years period supported by £5 million Tree Planting Programme
- 2 Launch tree warden scheme and identify a site for green waste to be processed in Ealing
- 3 Electrify 100% of our maintenance equipment by 2025 where market products are feasible
- 4 Install sustainable urban drainage system, flood attenuation and alleviation projects at: Dean Gardens, Belvue Park and Lammas Park
- 5 Carry out the Glade Lane Sewer daylighting scheme part of the Southall Wellbeing Way.



Nature

Perivale Park – Greenford to Gurnell Greenway SuDs Project Site 2: Sports Pitches Ponds & Planting

The sports fields occupy the main open space within the park. They consist of a mixture of cricket, football and rugby pitches. The River Brent is located approximately 400m to the south of the pitches. This project provided an opportunity to better manage the water on site to provide multiple benefits.

The project provides a good example of how playing field pitch edges and water management can provide multiple benefits. The ponds have extended the playing season of the pitches by improving the drainage while offering a variety of new complementary habitat types. Park users benefit from a more interesting parkland landscape and the new path provides new routes for walking and jogging. The ponds provide an excellent new habitat by taking advantage of what was formally a problem area.



Before – The existing pitches lacked landscape interest and games were sometimes cancelled due to waterlogging. Water gathered at the low point of the pitches causing a large muddy area. This also restricted movement for local residents as the area was impassable at certain times of year. This also meant people would be less likely to visit the park cafe.



Low point where water gathers causing a muddy area which also makes the area difficult to walk past during the winter

After – To hold the excess water one large seasonal pond was created at the low point with two smaller ponds. The main pond is also connected to the old land drains. A path was also constructed to provide a much needed new access route which also completes the circuit of the park. Six items of outdoor gym equipment have been located along the new path. Five thousand trees and shrubs have been planted to add interest and habitat to the area.

Seasonal ponds to store water and improve the playability of the pitches

New path

New tree and scrub planting

How we travel matters

We are creating a borough where active travel, including walking and cycling, are the natural choices for everyday local journeys. Taking mobility into account our dependency on motorised vehicles will be dramatically reduced. We are ensuring that as our population grows, our residents choose public transport and cleaner vehicles as alternatives.

Focus UN SDGs



Our clean and active travel roadmap to improve health, air quality and slash emissions

We need to accelerate our work on transport, increase our active travel and decrease our car dependency. Our borough-wide dataset on GHG⁷ makes it clear that transport is the second largest contributor of emissions in the borough, providing the biggest challenge but also the biggest opportunity in meeting the 2030 vision.



To improve local air quality and tackle carbon emissions, we revised local parking charges and supported efficient driving. In 2020, we introduced emissions-based parking permits, meaning that lower vehicle emissions equal lower parking permit fees. Cars are necessary for some journeys, especially for disabled people. But the more we walk, cycle or use public transport, the better and easier it is for those who really need to drive or be driven.

Building a charge point network to help residents transition to electric cars

At the end of 2022 we had over 5900 electric vehicles registered, and with our growing electric vehicles charging points network – over 450 points installed. We are on track to exceed TfL's forecast of 2030 required charging points four years early. Increasing sustainable modes of transport can improve air quality and reduce many diseases, including asthma, strokes or cancer.



Enabling active travel by introducing school streets

We have introduced 21 school streets across the borough to support children and teenagers in safe school journeys and promote active travel.

Our 2023 – 2026 transport highlights

We will invest in projects supporting active travel, reducing the use of cars on the roads and supporting Ealing's residents' transition to electric vehicles. In the next two years we will:

- 1 Ensure school children can actively, and safely, get to 50 of our schools by strengthening and expanding our school streets programme
- 2 Install 25 new bike hangers by April 2023, and another 25 by the end of summer. Then install at least 25 more each year to 2026.

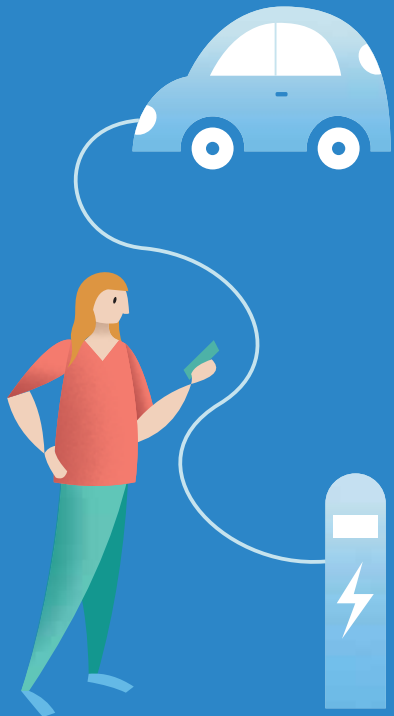


- 3 Improve Ealing's air quality and increase the number of active travel projects with new cycle lanes and walking routes, including Get Southall Moving and Visions for Northolt
- 4 Reduce the number of diesel cars by expanding access to Electric Vehicle Charging Points (EVCP) by adding 400 EVCP on streets each year, working towards having 2,000 charge points by 2026.



Travel

Ealing Council has worked with schools and residents to advise on pedestrian safety and teach cycle training skills. The recent expansion of Street Schools and Ultra Low Emission zone helps us to reduce traffic and improve air quality significantly. Our manifesto 2026 outlines further improvements for transport in the borough. We will have 2000 charging points for electric vehicles across the borough and install 25 bike hangars each year, by 2026.



Waste

Food is something that can bring us all together and in Ealing we have a community that embraces many different cultures and backgrounds, bringing availability to some amazing foods! An issue that the borough faces is the access to food waste bins, especially for residents that live in blocks of flats.

Over the past two years Ealing council Waste team have been working hard to implement food waste bins for residents in flats that previously didn't have access to them. We implemented a six-stage project to invite residents to the recycling programme, provide kitchen caddies and information about food recycling. Prior to starting this project, only 8% of flatted properties had a food waste collection service. At the end of 2022, this rose to 29%, working towards Ealing's carbon-neutral vision.

Additionally, a home composter bin competition for residents was run to promote feeding your garden from leftover food. Ealing residents are already using their home composter bins to recycle kitchen and garden waste: "Composting at home enables me to make a contribution towards protecting the environment and the battle against climate change. The compost I make is great for my garden and soil". – Patrick

"By composting, I am giving back to the earth while staying in touch with nature. The compost bin was very easy to assemble." – Cesar

// The compost I make is great for my garden //



// By composting I am giving back to the earth //

Waste – a construct of the past

We will see the emergence of a circular economy in the borough and are actively reducing the creation of waste by creating opportunities for the community to reuse, repair and maximise the life of materials. We want to promote to residents that rubbish could be a resource.

Focus UN SDGs



Making recycling easy

We formed a partnership with charity group TRAIID who offer free home pickup services for unwanted clothing.

We support Ealing residents to dispose of their rubbish in ways that can reduce the amount of waste that goes to landfill, we are introducing infrastructure across the borough to accelerate the model where we fix, reuse, upcycle and recycle. We focus here particularly on textiles and small electricals, including toasters, kettles or phones. Our new partnership with TRAIID⁸ has helped us to increase textiles and small electronics collections to save CO₂ emissions and save tonnes of surplus clothes.



Re-using and re-making waste

We have been supporting local groups and residents to reuse and repair.

We currently support a group of community organisations, charities and volunteers linked to - Let's Go Southall⁹. This is a local initiative to get the town of Southall more physically active, and to create a space for a circular economy model. Let's Go Southall collect abandoned and old bikes, they are repaired and refurbished and given to local residents.



Residents can gain the skills and knowledge to reuse the things they own. In these spaces residents share tools and equipment that people might only use occasionally. They also share advice and best practice on how to repair the things they own.

Reducing food waste

We have increased the number of residents in flats with access to food waste bins.

Food is a core theme of the strategy, with a focus on food waste. We have successfully rolled out the food waste collection service for flats, and currently 29% of flats in the borough are served with food waste recycling. We are aiming to increase this number over the next two years. We will be trialling commercial food waste collections in the borough, with the hope to roll this service out to all businesses if the trial is successful. We remain focussed on increasing home composting in households in the borough, by offering discounted composters and developing a campaign to improve residents' knowledge about what, how and why to compost.



Our 2023 – 2026 climate action highlights

Over the next two years we will:

- 1 Trial a new approach for food and commercial waste collections to increase efficiency and minimise the CO₂ emissions of the fleet
- 2 Trial a low carbon neighbourhood in Acton. The trial will aim to embed circular economy best practice into the neighbourhood, this will hopefully result in positive behaviour change, where the community will consume differently, waste less and reuse, repair, share and recycle more



- 3 Open Ealing's first 'Library of Things' to help residents reduce waste and save money by renting tools and electronics rather than purchasing new ones
- 4 Transition to an Electric Vehicle collection fleet wherever possible, as well as trial Hydrotreated Vegetable Oil for the vehicles
- 5 Investigate the potential of the whole life assessment in the borough, for those carbon emissions resulting from the construction and the use of a building over its entire life, including its demolition and disposal.



8. TRAIID partnership https://www.ealing.gov.uk/info/201171/recycling_services/1780/textile_recycling

9. Let's go Southall: Home - Let's Go Southall (letsgosouthall.org.uk)

Unlocking future success

It is important to celebrate the successful delivery of projects by the council and its partners over the last two years. Equally it is necessary to be transparent about the underlying challenges to delivering our carbon neutral 2030 ambitions and identifying keys to unlocking success in the short term. Over the next three years, we will continue working ambitiously with our key partners to deliver the multi-year projects and achieve actions highlighted in this report.

Central government funding and policy direction

To support local climate action, we need considerable and consistent central government financial and policy leadership. We have seen more funding in recent years to deal with the climate crisis; however, local councils are in a vulnerable position, given greater community needs after the pandemic and ongoing financial uncertainty. In order to rapidly progress our retrofitting of existing buildings, we will need a steady stream of funding to continue good affordable warmth programmes.

Our residents also need access to low-cost lending to upgrade privately owned homes – this requires close collaboration with regulators. Recent analysis indicates Ealing homes require an estimated £26k per property on average to improve to their energy performance rating to a high enough standard that will put us on the pathway to net zero as a borough. This is an important piece of the carbon neutral puzzle that we continue to work with local authority partners to progress.

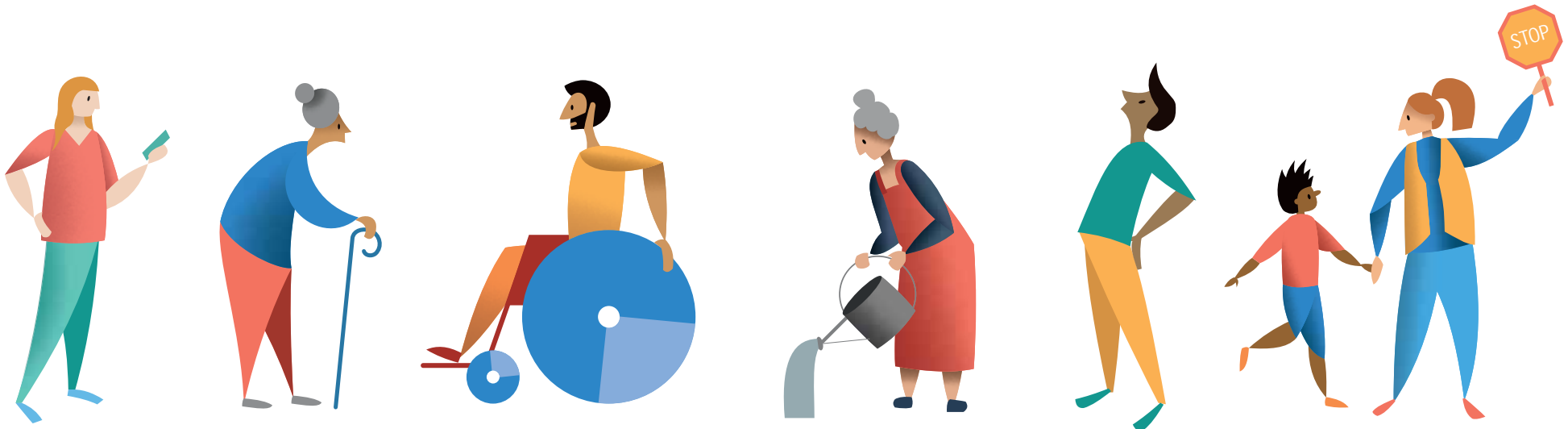
At a national level, progressive planning and building regulations that support the delivery of net zero neighbourhoods, local economies and businesses are necessary. Our draft Local Plan sets out climate action as key strand of work, underpinning the expectations we set for how the borough changes over time.

We are campaigning for the necessary changes, including increased local powers for climate action and access to funding, to strengthen the transition and delivery of Ealing's carbon neutral ambitions. The Cabinet Member for Climate Action will communicate formally with the Secretary of State for Energy Security and Net Zero and urge the government to increase funding for house retrofitting and active travel measures. In addition, all planning applications will be evaluated against retrofitting principles in line with the Council plan commitment. This will prevent the demolition of buildings and enable more modern and energy-efficient housing in the borough.

Taking action together

The most recent Intergovernmental Panel on Climate Change (IPCC) report included a clear endorsement of changing the social and cultural behaviours to accelerate climate action and impact. This work relies upon local governments working hand in hand with individuals, communities and businesses to shift lifestyles and decision making. Everyone has a role to play in this interconnected system. This shared journey has the potential to unlock a multitude of multiple benefits to the borough such as improved health and wellbeing, a more robust local economy, more access to nature, better air quality and stronger communities.

To unlock opportunities at scale, we collaborate with other local authorities and educational institutions. Together we lobby the vital support from the central government, conduct studies and create projects that reach across borough boundaries. In recent years, we have laid strong foundations for working together in the realms of energy, circular economy and transportation, which benefit from collaboration. More work at a grassroots level – working directly with communities to deliver their own ambitions – is required to make local climate action a true success.





WHAT IS CLIMATE ACTION?

CLIMATE ACTION IS EVERYWHERE.

SCOUT TROOPS TAKING PART IN RIVER CLEAN UPS, CARGO BIKE COURIERS OFFERING ZERO-EMISSION DELIVERIES, COMMUNITY GARDENERS SUPPLYING FRESH, LOCALLY PRODUCED FOOD WHILE SIMULTANEOUSLY PROVIDING WILDLIFE HABITAT, MENDERS MAKING CLOTHING LIKE-NEW AGAIN, BIRDERS WATCHFULLY TRACKING SPECIES DIVERSITY, UPCYCLERS RESCUING MATERIALS FROM THE TIP, FOOD REDISTRIBUTORS PUTTING OTHERWISE WASTED FOOD INTO THE MOUTHS THAT NEED IT, LITTER PICKERS TAKING PRIDE IN LOCAL SPACES, STUDENTS FORGING NEW SOLUTIONS TO OLD PROBLEMS, ELDERS REMINDING US THAT NOT TOO LONG AGO, WASTE WASN'T AN OPTION – ARE ALL DOING THINGS THAT CONTRIBUTE TO A CLIMATE POSITIVE FUTURE.

THIS IS CLIMATE ACTION.

