

Get Southall Moving

Welcome

Ealing Council wants your feedback on ideas to make Southall's streets safer, cleaner and less congested.

As set out in Ealing Council's 'Travel in Ealing Charter', the council is committed to being open, transparent and inclusive in how we engage on transport and active travel projects.



Scan to complete survey

What is Get Southall Moving?

Ealing Council is working with the community to help make our roads safer, less congested and easier to walk and cycle. We want to make our streets greener and more attractive. This will make Southall a better place to spend time, helping to draw people in to local businesses and create better experiences for residents.

The ideas you see today are not final. We want your feedback on whether you think some, all or none of the proposals should be taken forward. We want to work with you to find the best solutions for Southall.

Improvements to walking and cycling routes

We want to encourage people to walk, cycle and use public transport more for local journeys, helping to reduce traffic and congestion on the roads in Southall. We are expecting to:



Improve safety and reduce antisocial behaviour



Reduce congestion and illegal parking



Improve air quality



Improvement to walking and cycling networks



Improve road safety



Promote the use of public transport

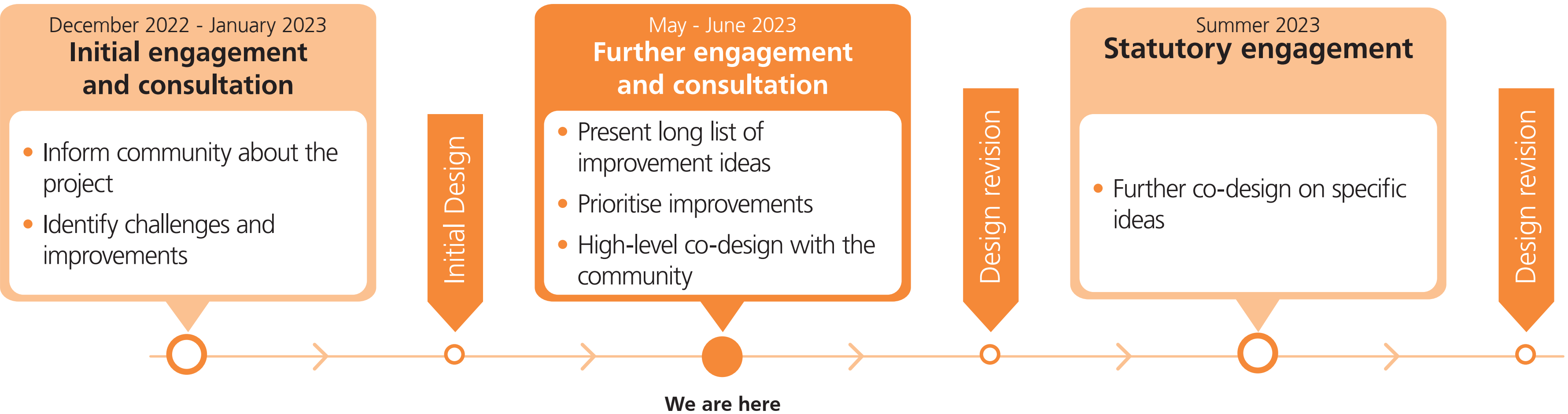


Improve streetscapes and greenery to attract people to the high street



Provide places to relax and enjoy the town centre

Project timeline



Engagement so far

Between December 2022 and January 2023, Ealing Council carried out the first stage of engagement to get feedback on how local people travel around Southall and what improvements could be made to encourage active travel. The feedback received has helped shape the ideas being shown today.

Over 350 feedback forms were completed, five workshop sessions were run and 40 businesses completed surveys.



Your key areas for improvement:



Barriers to walking



Barriers to cycling



Barriers to using public transport



Concerns over illegal parking and lack of enforcement



Concerns over lack of parking

Responding to your feedback

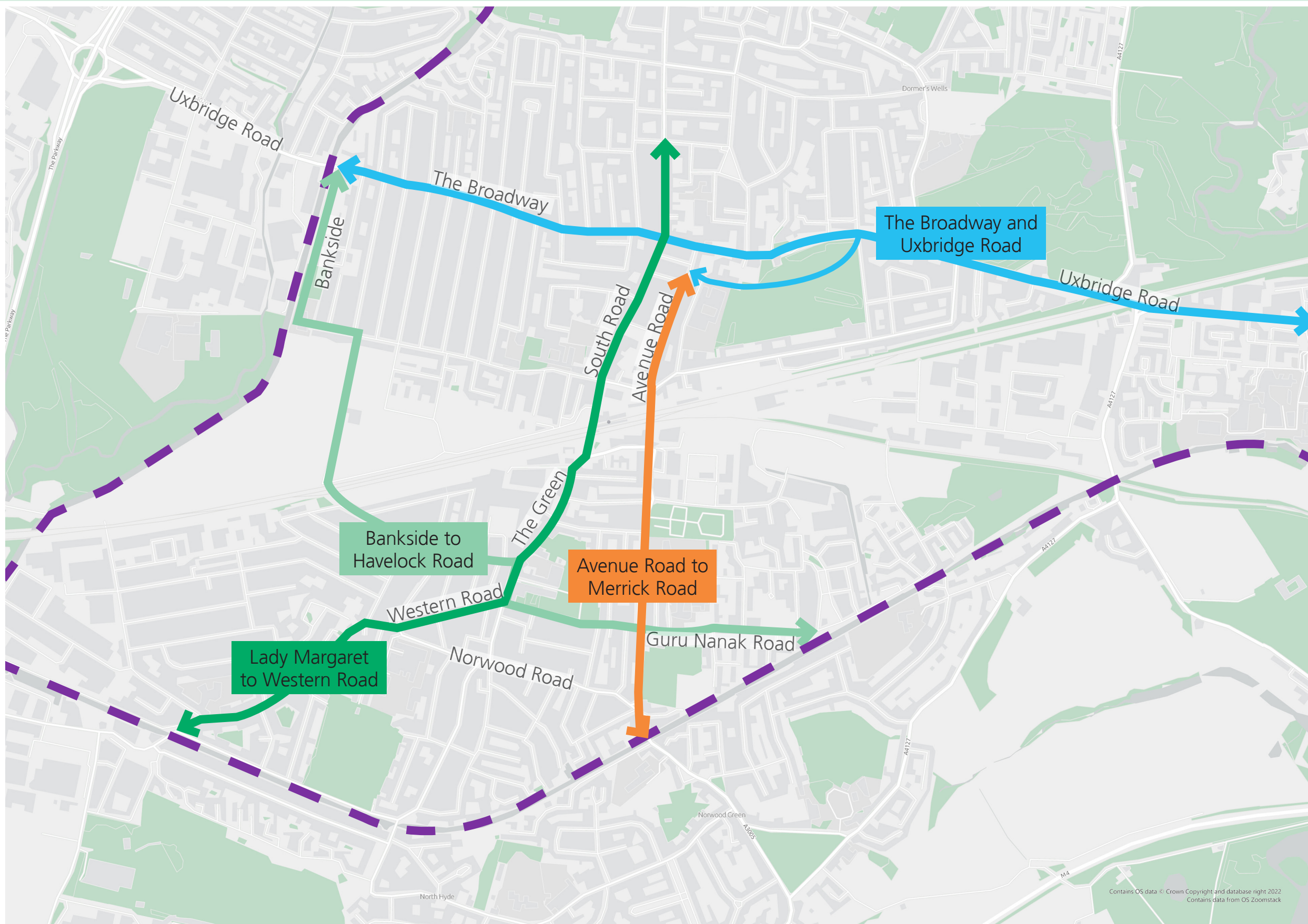
Lady Margaret Road to Western Road

YOU SAID	OUR RESPONSE
1 There is a lack of footpath space, due to shops coming out into the pavement.	We suggest improved, wider footpaths.
2 Traffic congestion and illegal parking is slowing buses down.	We suggest a dedicated bus lane along The Green.
3 It is unsafe for cycling.	We suggest a better cycle network, including better north/south routes.
4 There is not enough cycle parking.	We will be providing new cycle parking at the train station.

Bankside to Havelock Road

YOU SAID	OUR RESPONSE
1 Wider footpaths are needed.	We suggest improved, wider footpaths.
2 The underpass at Spencer Street playground needs re-opening.	We suggest re-opening and making improvements to this underpass.
3 The streets of Southall are not attractive.	We suggest planting more trees to make streets more attractive.
4 When is the connection through Greenside Quarter opening for walking and cycling?	We have spoken with Berkeley Homes: they agree in principle and are looking at how to open it safely.

Based on the feedback received, a series of ideas have been identified for each of the four streets within the Get Southall Moving area. These ideas respond to the concerns raised about travel around Southall.

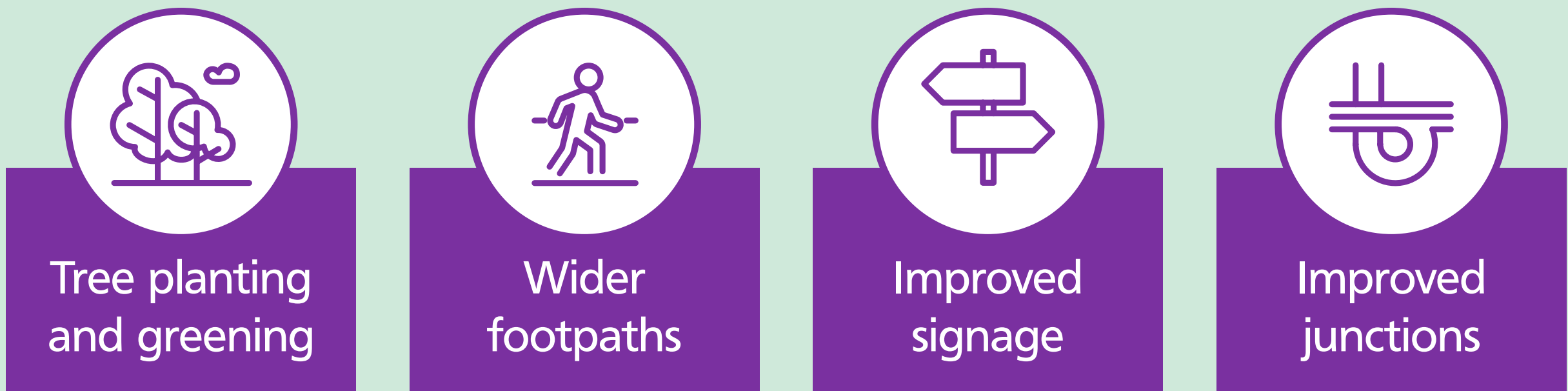


Get Southall Moving area showing the four streets

- ↔ Avenue Road to Merrick Road
- ↔ Lady Margaret to Western Road
- ↔ Bankside to Havelock Road
- ↔ The Broadway and Uxbridge Road
- Canal path

General principles:

In response to feedback, there are four key areas which have guided the proposals and are consistent throughout each street. These include:



Avenue Road to Merrick Road

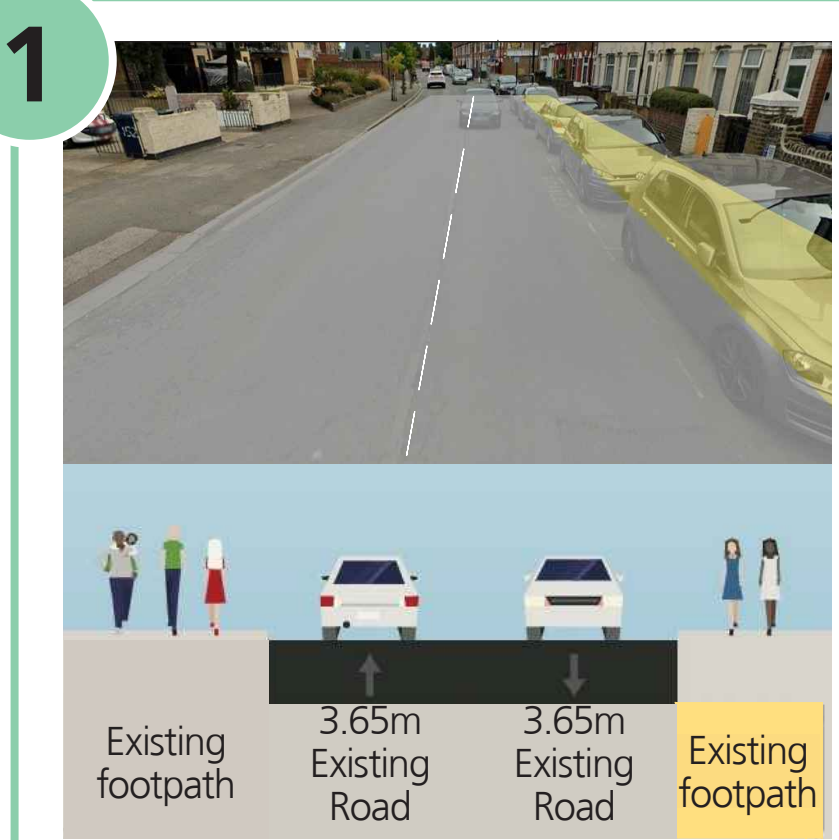
YOU SAID	OUR RESPONSE
1 South Road Bridge is unsafe for cycling.	We want to make it safer to cycle along Avenue Road to Merrick Road, so you don't have to use South Road Bridge.
2 The new foot and cycle bridge is not accessible.	We suggest installing lifts to the bridge.
3 It feels unsafe to travel down Merrick Road due to overgrown vegetation.	We suggest improving lighting and vegetation along the shared cycle footpath on Merrick Road.
4 Wider footpaths are needed.	We suggest new, wider footpaths.
5 There is not enough cycle infrastructure to allow for safe cycling.	We suggest upgrades to the Merrick Road cycle path, a new shared cycle way on Avenue Road and cycle friendly crossings.

The Broadway to Uxbridge Road

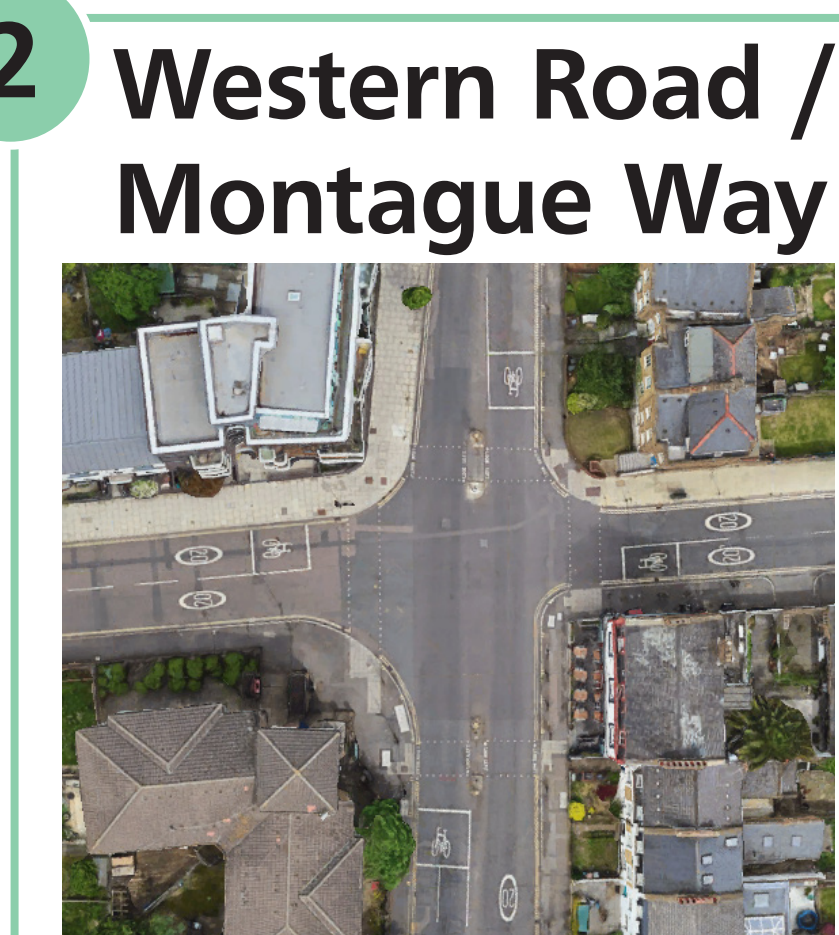
YOU SAID	OUR RESPONSE
1 Buses take too long due to congestion.	We suggest an extension to the bus lane on Uxbridge Road and a dedicated bus gate to reduce congestion.
2 There is too much illegal car parking on the Broadway.	We suggest planting on the central islands along the Broadway to prevent illegal car parking.
3 There is a lack of cycle lanes.	We suggest a better cycle network, including completing the dedicated cycle lane on Uxbridge Road.

Street 1: Lady Margaret Road to Western Road

Street 1 is located from **Lady Margaret Road to Western Road**. We are suggesting a number of ideas in response to feedback received during the first round of engagement. We want your feedback to understand which of the ideas we should take forward.



Western Road
You said there is a lack of space for people to walk. Therefore, we suggest widening the pavement. To do this we would need to remove the on/off road car parking on Western Road between Brent Road and Featherstone Road.



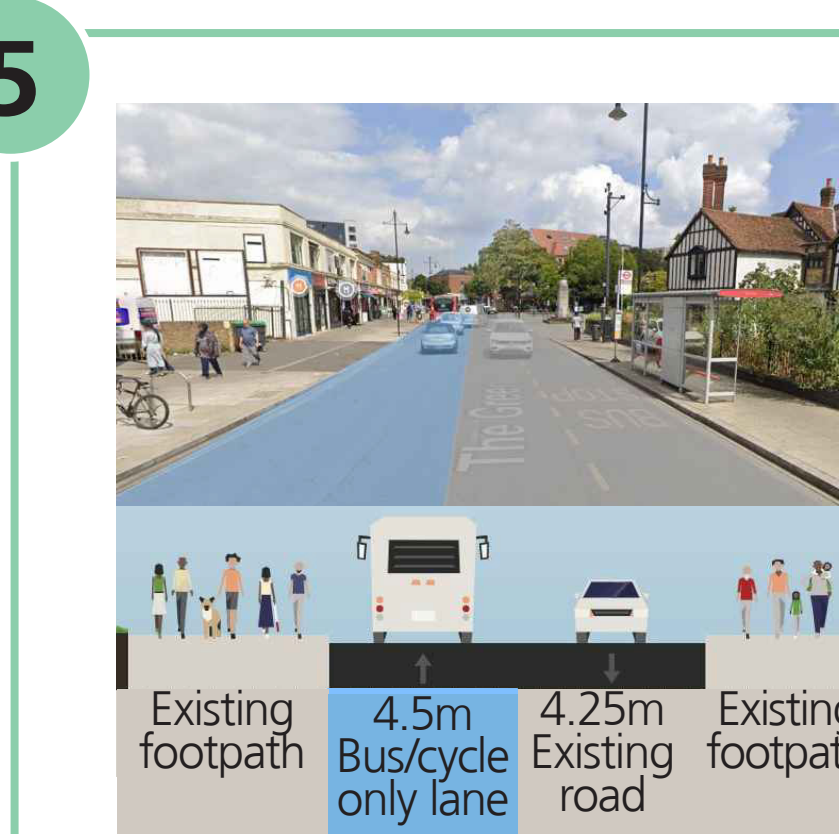
Western Road / Featherstone Road / Montague Way
You said you wanted safer roads for people walking and cycling, and for traffic to flow better. Therefore, we suggest converting the existing mini-roundabout into a junction with traffic lights and pedestrian crossings. We also suggest adding Advanced Stop Lines (ASLs) so that cyclists can easily position themselves in front of traffic.



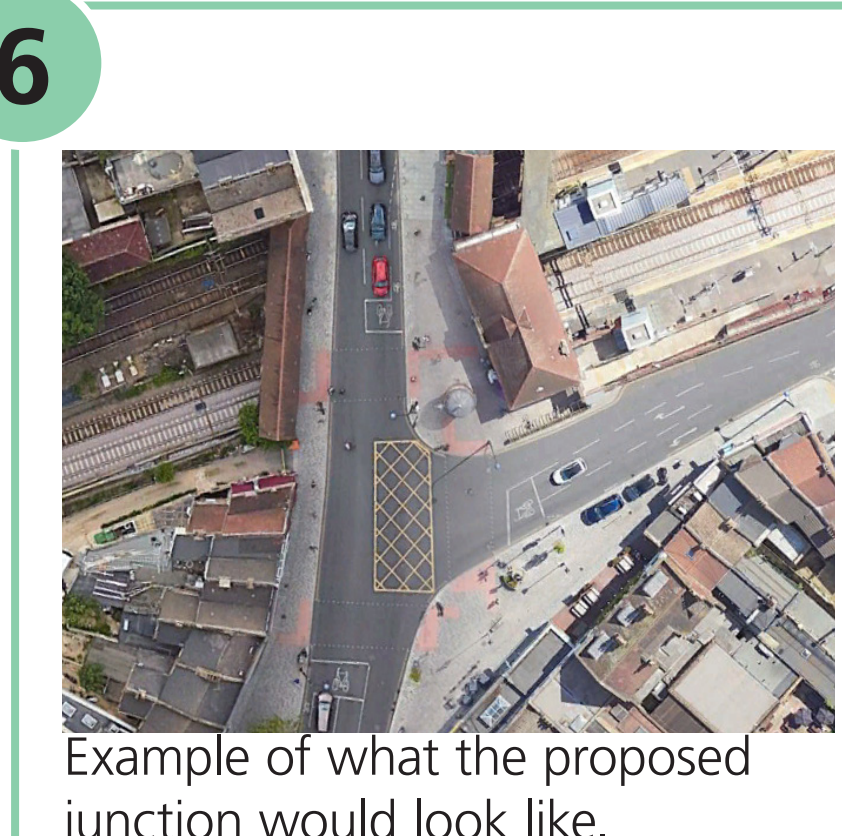
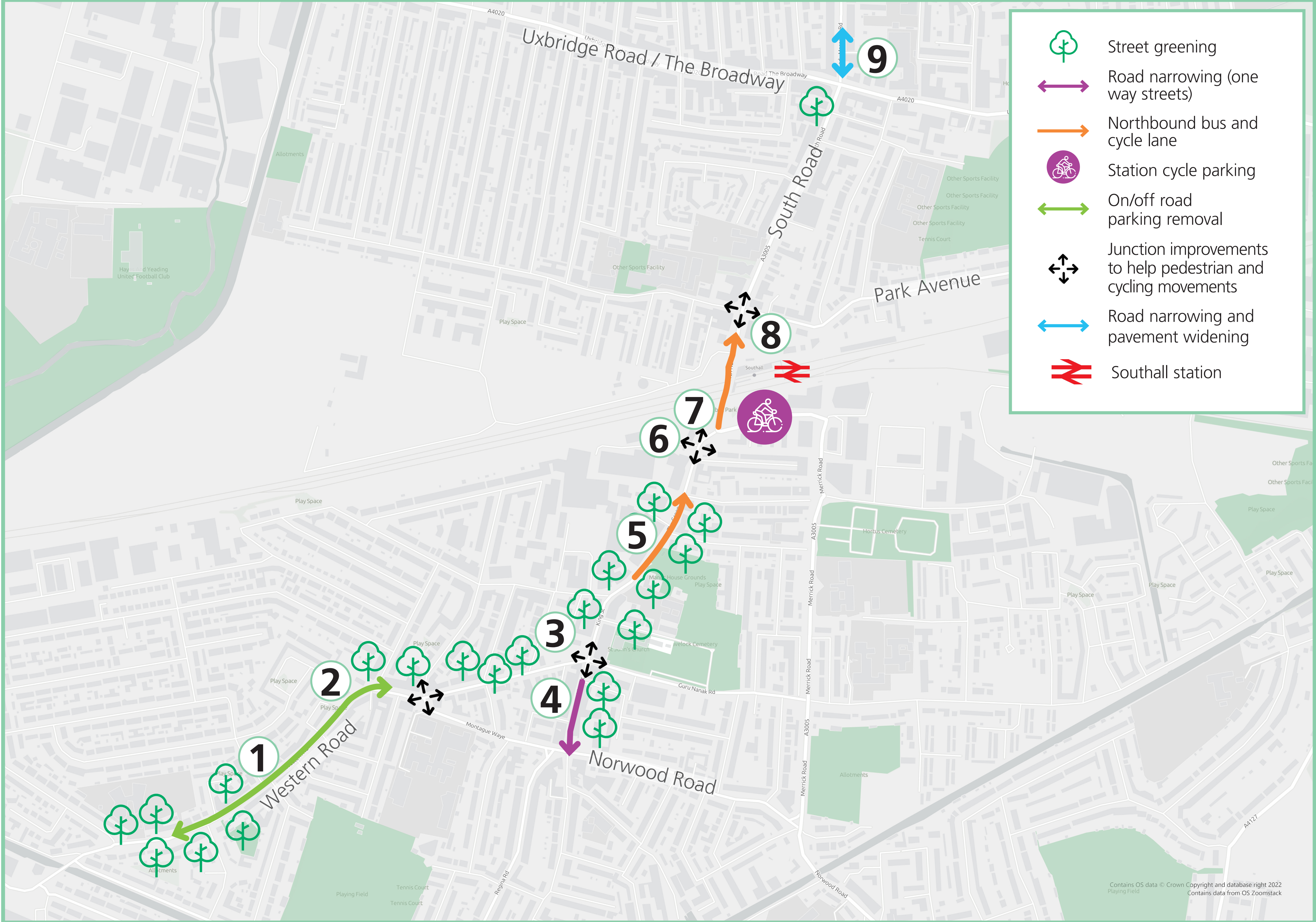
Western Road / King Street
You said it often feels unsafe for cyclists. Therefore, we suggest adding Advanced Stop Lines (ASLs) at this junction so that cyclists can easily position themselves in front of traffic.



King Street
You said you want more space for shoppers to walk. Therefore, we suggest changing King Street to southbound traffic only to widen the pavement. We would make sure there is still space for loading and disabled parking bays.



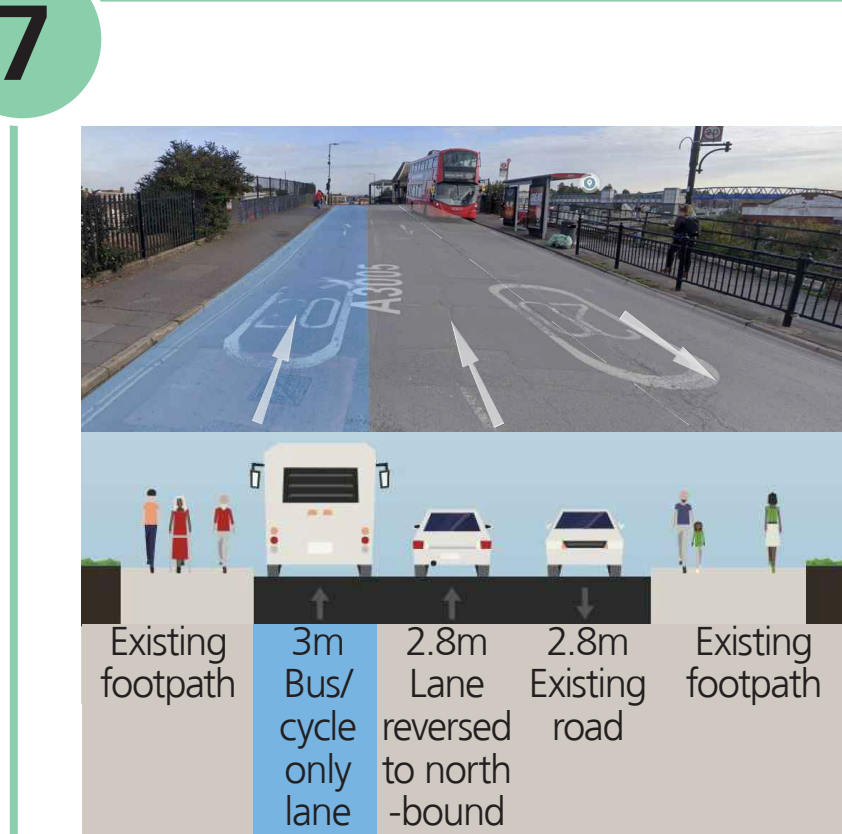
The Green
You said you want to reduce congestion and speed up buses on this road. Therefore, we suggest a bus only lane along the Green in the northbound direction between Featherstone Road and Kingston Road. **What hours do you think the bus lane should operate?**



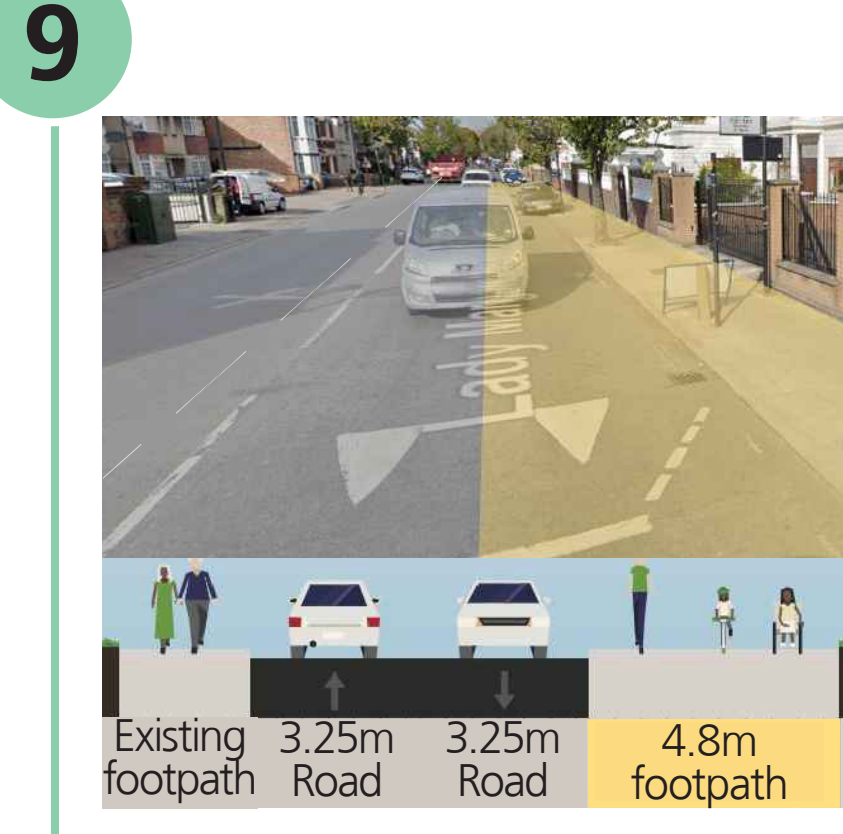
The Green/ South Road/ Merrick Road
You said it often feels unsafe for people crossing the road. Therefore, we suggest widening the north east pavement and changing the roundabout to a junction with traffic lights which will consider the slope between the road and the pavement. We also want to add Advanced Stop Lines (ASLs) for cyclists at the junction.



The Crescent/ South Road and South Road/ Park Avenue/ Beaconsfield Road
You said it often feels unsafe for cyclists. Therefore, we suggest adding Advanced Stop Lines (ASLs) at this junction so that cyclists can easily position themselves in front of traffic.



South Road
You said congestion is slowing buses down on this road. Therefore, we suggest reducing the number of lanes in the southbound direction to one, and adding a northbound bus and cycle-only lane. We suggest that the northbound bus stop is relocated in front of Southall station. **What hours do you think the bus lane should operate?**



Lady Margaret Road
You said there is a lack of space on the pavement. Therefore, we suggest widening the pavement between The Broadway/South Road junction and the Temple, Vishwa Hindu Mandir. To do this we would need to remove some on/off road car parking spaces in front of the Temple.

What does it mean for Southall?

Congestion and journey times

- Discourage through traffic, which is likely to lead to an overall reduction in traffic in Southall.
- Bus and cycle only lanes will improve cycling journey times.
- Removal of northbound congestion between Western Road and South Road will result in bus journeys being up to 5 minutes faster in PM peak and improve bus reliability (less bus delays and more reliable bus timetables).
- Increase in northbound journey times between Western Road and South Road due to the closure of The Green, and in the southbound direction due to the reduction of traffic lanes on the bridge.

Safety

- Advanced Stop Lines (ASLs) on all junctions will improve cyclist's safety and comfort.
- Better and safer pedestrian crossings.
- Bus and cycle only lanes will improve cyclist safety.
- Lower levels of congestion will improve pedestrian and cycle safety.

Attractive streets

- Better walking and shopping experience with widened pavement on King Street.
- More pedestrian and cycling friendly streets, junctions and crossings.

Air quality

- A reduction in traffic levels and potential shift to increased walking and cycling are likely to improve overall air quality in Southall.
- A detailed assessment will be undertaken.

Car parking
We want to create wider pavements and make space for a bus/cycle only line so we suggest removing a number of car parking spaces. We will also keep car parking spaces at the locations shown below.

Location	Removed	Kept
Western Road area	47	13
King Street area	0	8
The Green area	13	18
South Road area	0	19
Total	60	58

These ideas are not final. When providing feedback please think about the questions below.

Are there any other ideas that we should include?

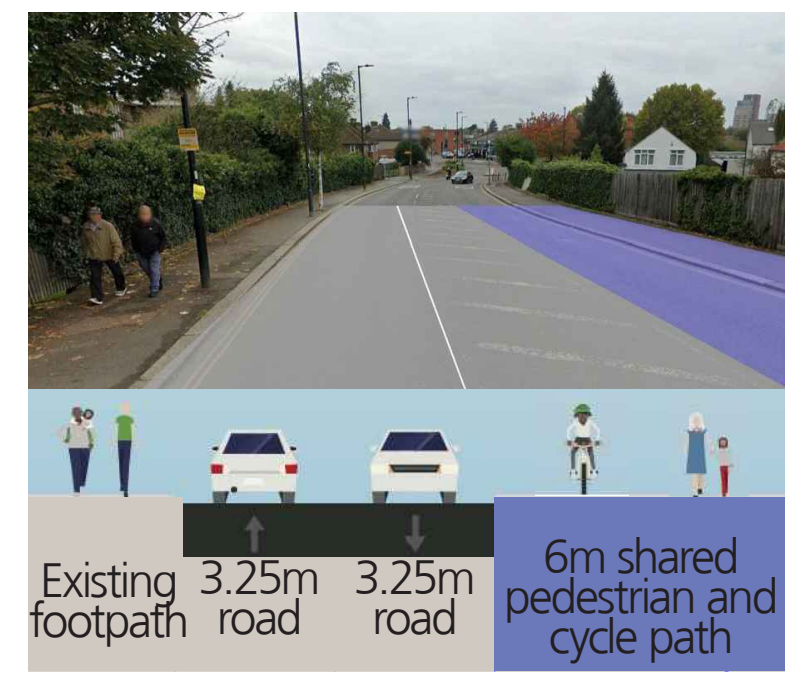
Are there any changes we should make to the suggested ideas?

Should any of ideas not be included and why?

Street 2: Avenue Road to Merrick Road

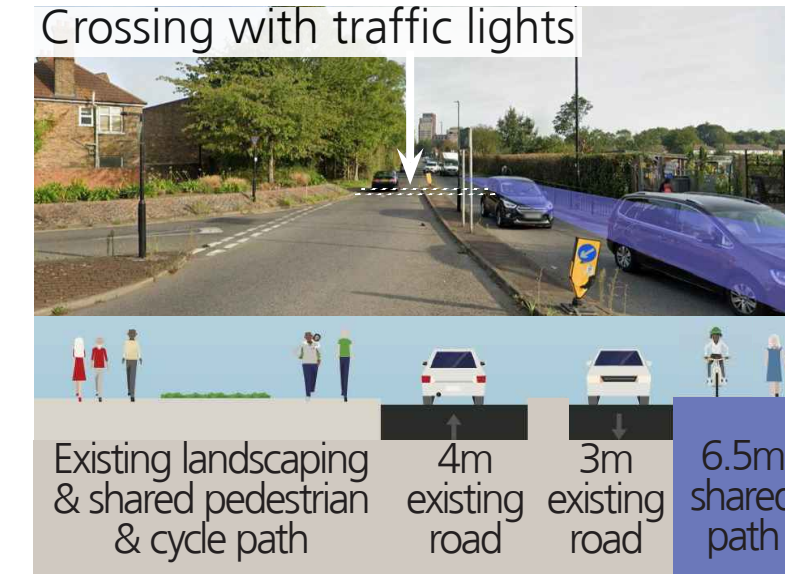
Street 2 is located from **Avenue Road to Merrick Road**. We are suggesting a number of ideas in response to feedback received during the first round of engagement. We want your feedback to understand which of the ideas we should take forward.

1 Merrick Road/ Norwood Road roundabout



You said that wider footpaths are needed. Therefore, we suggest a wider, shared pavement for pedestrians and cyclists to connect the canal with the western side of Merrick Road.

2 Merrick Road (north of Norwood Road Roundabout)



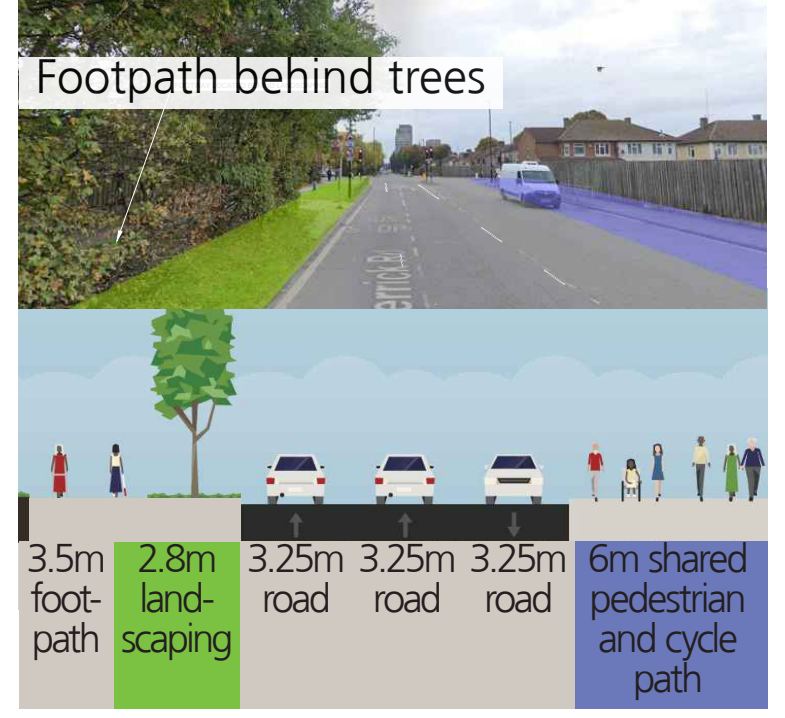
You said it feels unsafe to walk down Merrick Road. Therefore, we suggest connecting the suggested shared walking and cycling pavement and the canal path with traffic lights. We also suggest widening the north west pavement.

3 Havelock Road / Merrick Road / Guru Nanak Road

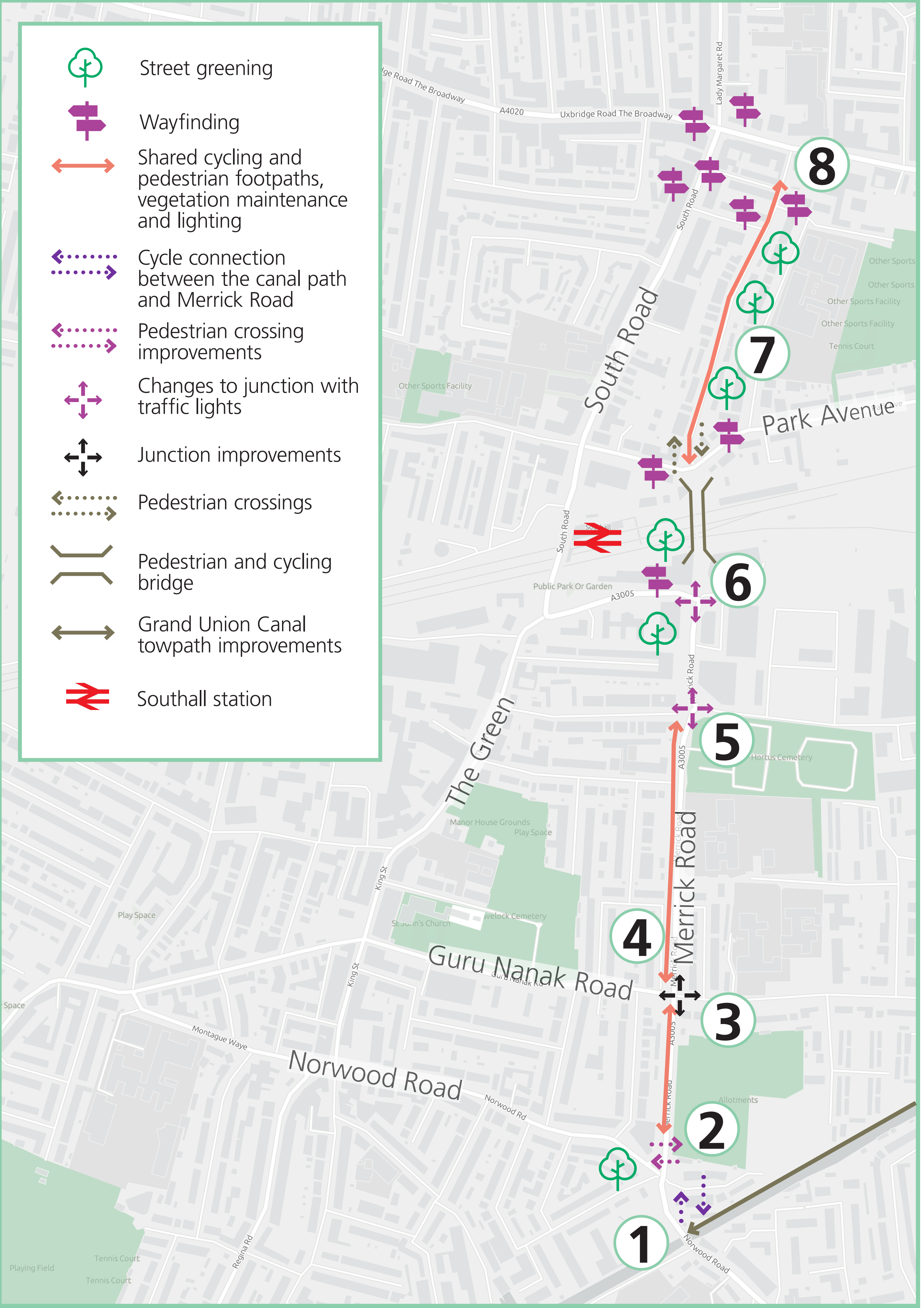


You said you want it to be easier for pedestrians to cross the road. Therefore, we suggest widening the pavements, adding traffic lights to the existing crossing and narrowing the road where Merrick Road meets Havelock Road, so pedestrian crossings are shorter. We also suggest reducing the number of lanes along Merrick Road to one northbound and one southbound lane.

4 Merrick Road



You said you feel unsafe walking/cycling here. Therefore, we suggest widening and improving the pavement between the suggested traffic lights at the Guru Nanak Junction and the existing cycle lane on the western side of Merrick Road. We also suggest better lighting and removing overgrown vegetation here to improve visibility.



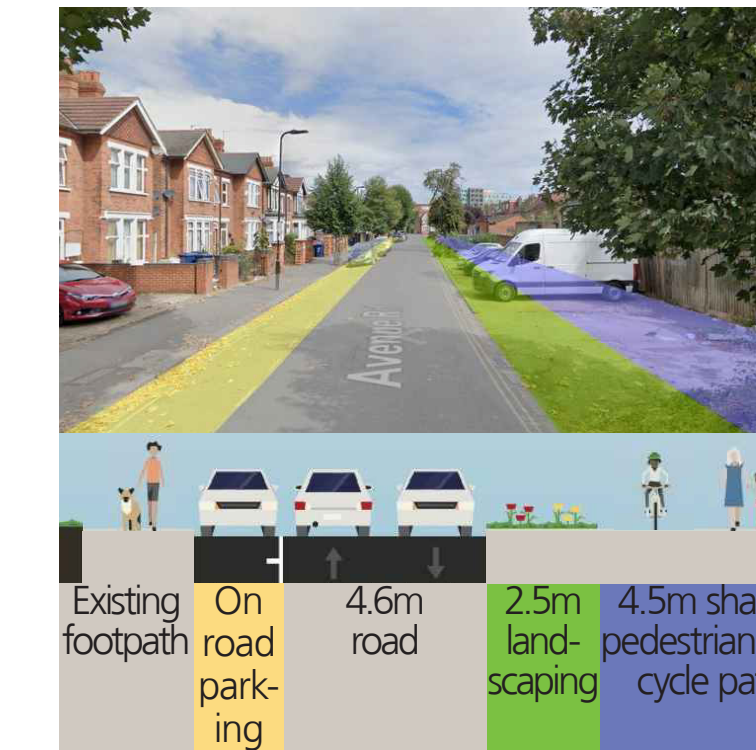
- Street greening
- Wayfinding
- Shared cycling and pedestrian footpaths, vegetation maintenance and lighting
- Cycle connection between the canal path and Merrick Road
- Pedestrian crossing improvements
- Changes to junction with traffic lights
- Junction improvements
- Pedestrian crossings
- Pedestrian and cycling bridge
- Grand Union Canal towpath improvements
- Southall station

6 A3005 / Merrick Road / Healum Avenue



You said there are not enough cycle routes. Therefore, we suggest adding traffic lights to the junction and having separate crossings for cyclists and pedestrians on the western side of the junction to connect with the cycling walking bridge, and the existing two way cycle lane.

7 Avenue Road



You said you want better connected cycling routes. Therefore, we suggest a shared pedestrian/cyclist pavement on the eastern side of Avenue Road and we would improve the pavement surface. This pavement would replace the illegal car parking spaces on the road. We would keep the current on-street parking and making space for cars to travel in each direction.

What does it mean for Southall?

These ideas will provide a continuous cycling and walking connection between the canal path, Uxbridge Road and Southall Park.

- Congestion and journey times**
- Reduction in southbound traffic along Merrick Road but a slight increase in the northbound direction as a result of the ideas suggested for Street 1.
 - Analysis shows that there will be reduction in traffic through Southall when all suggested ideas are introduced.
 - Minimal impacts to car and bus journey times.

- Safety**
- Better and safer pedestrian and cycling crossings.
 - Safer walking and cycling access from Merrick Road to Guru Nanak Road, Bridge Road, Healum Avenue, the pedestrian and cycling bridge and along Avenue Road.
 - Improved pedestrian and cycling safety along Merrick Road resulting from better visibility between the pavement and cycle lanes and the road.

- Attractive streets**
- Connection between Uxbridge Road, Southall Park and the canal path.
 - Improved cycling and pedestrian access from Merrick Road to Guru Nanak Road, Havelock Road, Bridge Road, Healum Avenue and the pedestrian and cycling bridge.

- Air quality**
- A reduction in overall traffic will benefit air quality however, increased start and stop at new junctions with traffic lights could impact air quality.
 - It is hoped that there will be a shift from driving to walking and cycling, which would improve air quality.

Car parking

We want to create a shared cycle and pedestrian pavement so we suggest removing a number of car parking spaces. We will also keep car parking spaces at the location shown below.

Location	Removed	Kept
Avenue Road between Park Avenue and High Street	7	52
Total	7	52

These ideas are not final. When providing feedback please think about the questions below.

Are there any other ideas that we should include?

Are there any changes we should make to the suggested ideas?

Should any of the ideas not be included and why?

8 Avenue Road / Boyd Avenue



You said you want it to be safer to cross roads in Southall. Therefore, we suggest adding a zebra crossing on Avenue Road between Boyd Avenue and Hamilton Road.

Street 3: Bankside to Havelock Road

Street 3 is located from **Bankside to Havelock Road**. We are suggesting a number of ideas in response to feedback received during the first round of engagement. We want your feedback to understand which of the ideas we should take forward.

1 Bankside Street

You said you want better access to the canal path. Therefore, we suggest adding a zebra crossing slightly further south from the existing steps, where Bankside Street and the canal path are at the same level.



Example of what the suggested zebra crossing will look like.

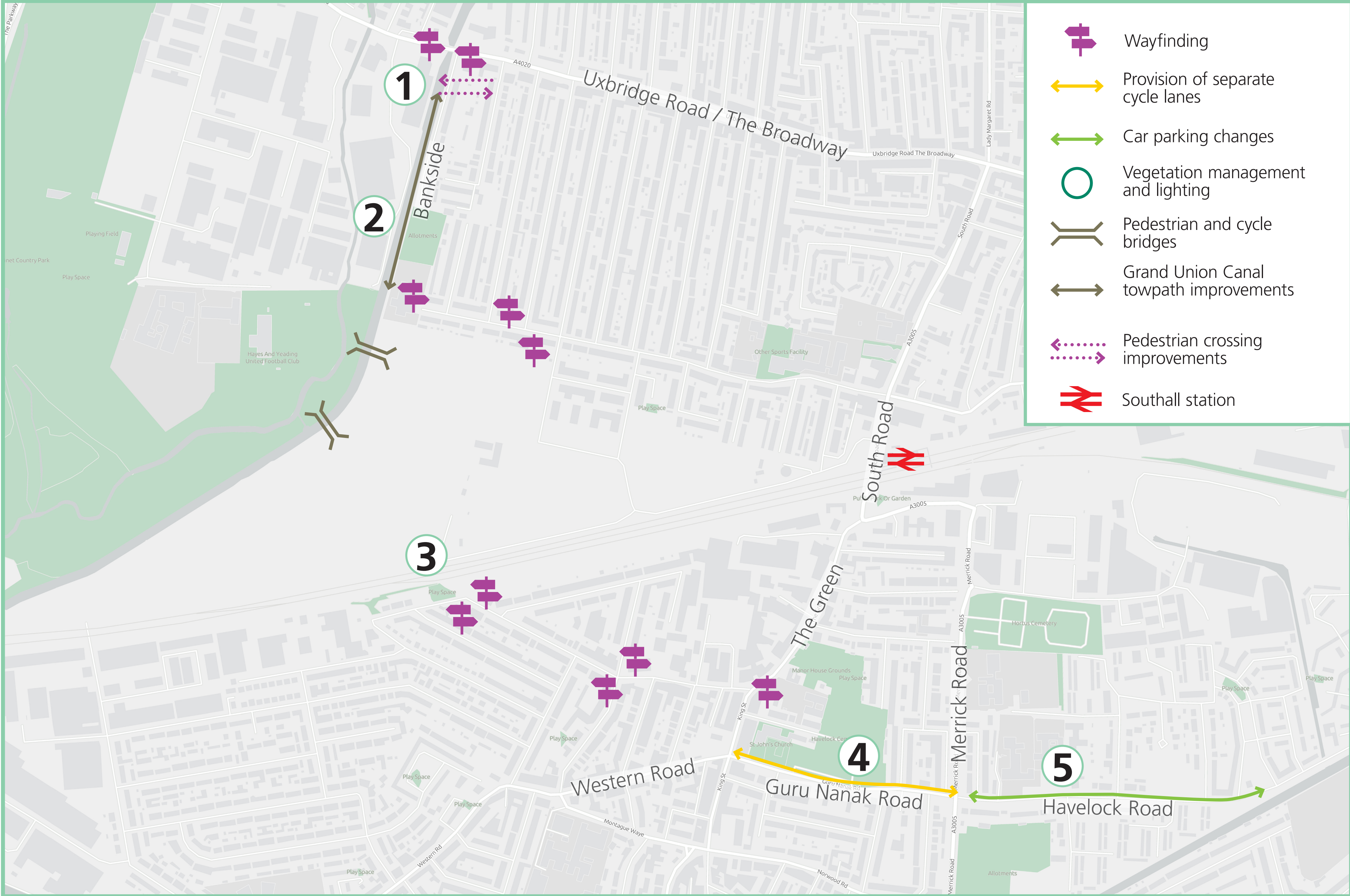
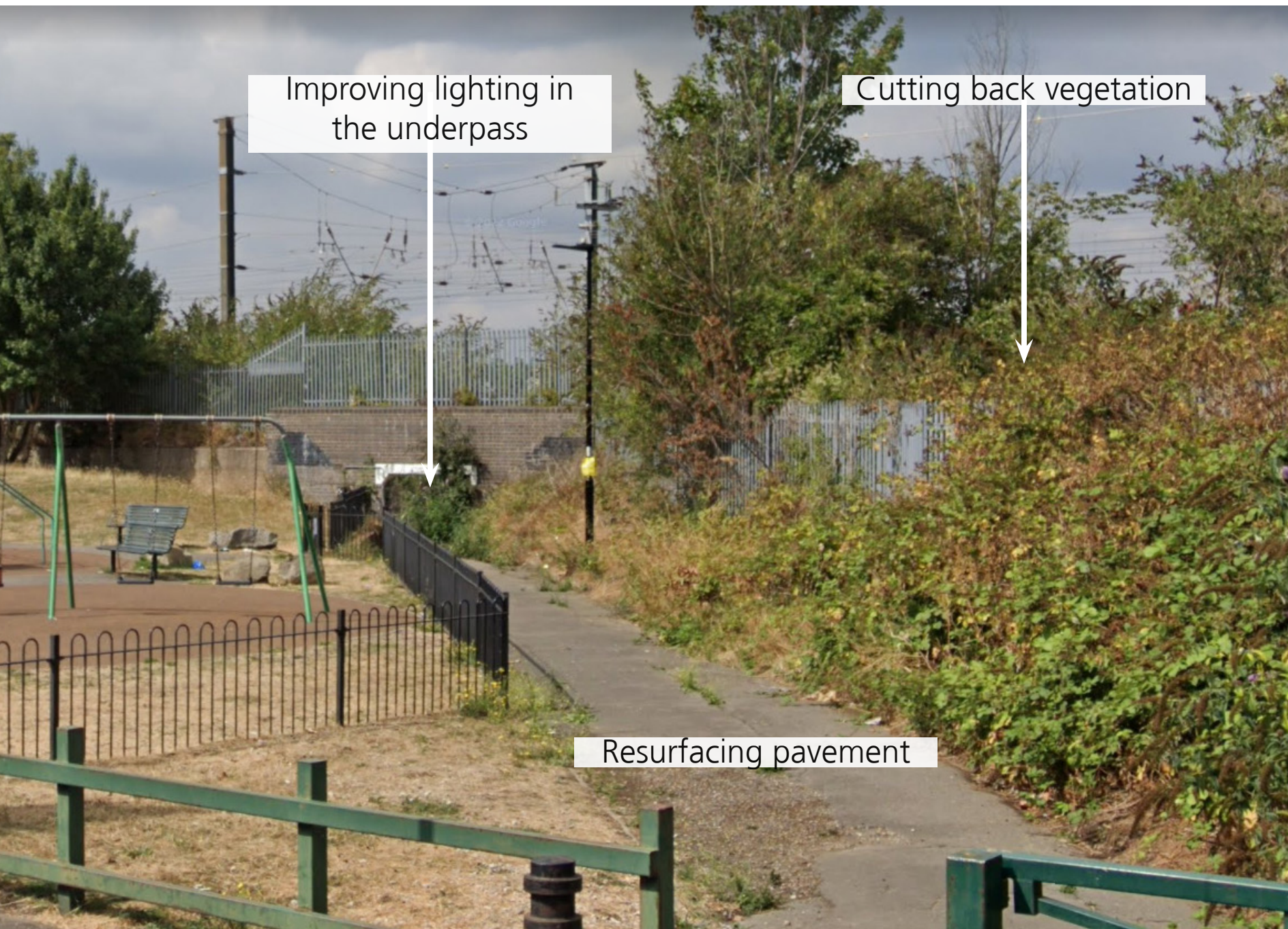
2 Bankside

You said you want to feel safer walking along the canal path. Therefore, we suggest cutting back vegetation to make it easier to see when walking to and from the nearby Bankside.



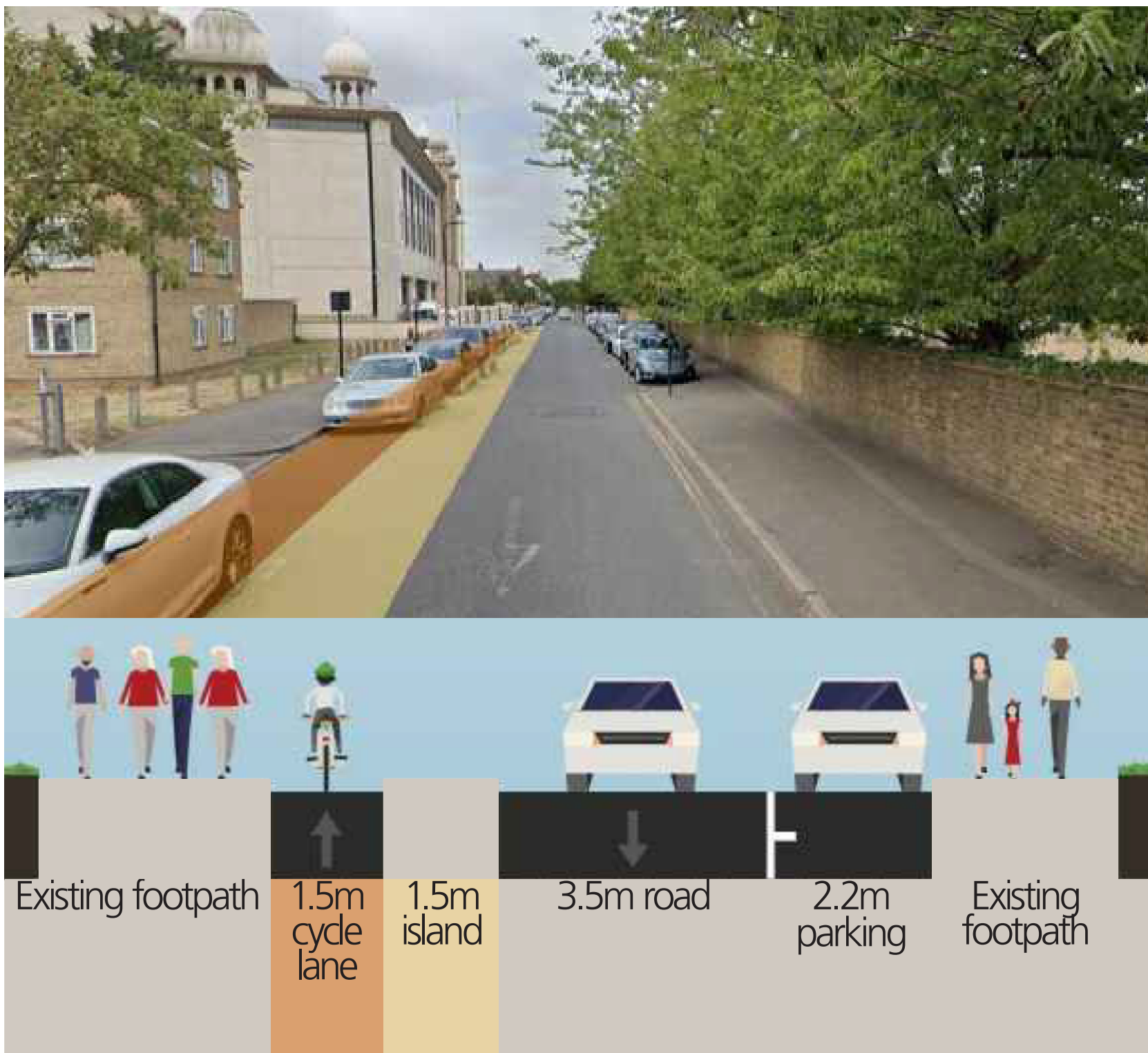
3 Dudley Road underpass

You said you want the Dudley Road railway underpass to re-open and to feel safer walking through it. Therefore, we suggest better lighting and managing the overgrown vegetation.



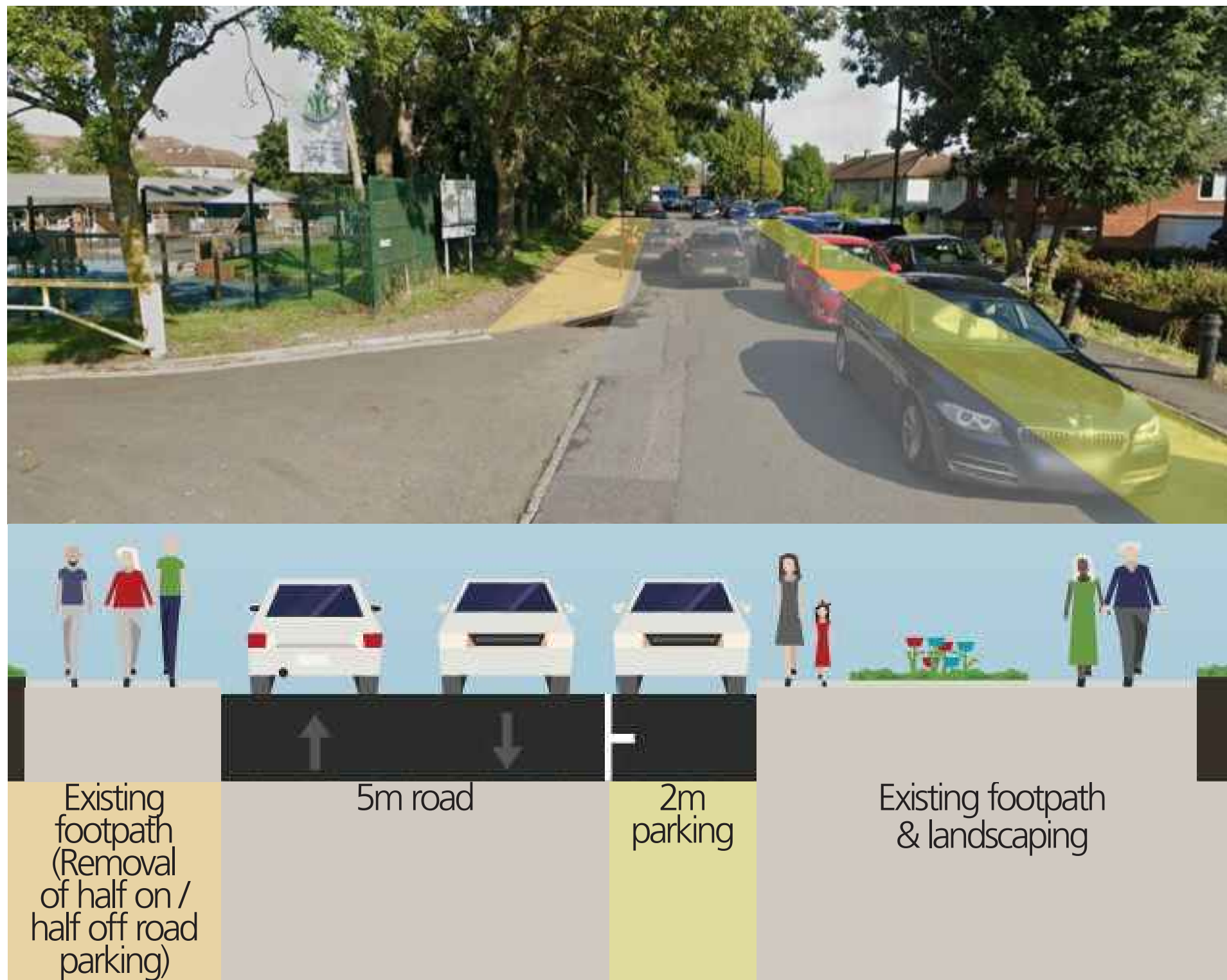
4 Guru Nanak Road

You said you want more cycle lanes in Southall. Therefore, we suggest a separate cycle lane on Guru Nanak Road in the westbound direction. An island would separate the cycle lane from the traffic.



5 Havelock Road

You said you want more space for people to walk on the pavement. Therefore, we suggest changing the existing parking to on-road parking to allow more space for pedestrians.



What does it mean for Southall?

These ideas will provide a walking and cycling connection between Havelock Road and Uxbridge Road, connecting with Merrick Road, King Street, The Green and Bankside.

Congestion and journey times

- There are minimal impacts to car and bus journey times.

Safety

- Better and safer pedestrian and cycling crossings.
- Improved cycling safety along Guru Nanak Road.

Attractive streets

- Improved connection between Havelock Road, Merrick Road, King Street/The Green, The Green Quarter and Bankside.
- Step-free access between Uxbridge Road and the canal.

Air quality

- The ideas suggested for this street will improve walking and cycling, with the hope of reducing car use which will benefit air quality.

Car parking

We want to create wider pavements to the south, wider roads to the north and a cycle lane and a crossing over Bankside, therefore suggest removing a number of car parking spaces. We will also keep car parking spaces at the locations shown below.

Location	Removed	Kept
Uxbridge Road area	0	4
Bankside area	1	37
Dudley Road area	0	87
Havelock Road area	39	84
Total	40	212

These ideas are not final. When providing feedback please think about the questions below.

Are there any other ideas that we should include?

Are there any changes we should make to the suggested ideas?

Should any of ideas not be included and why?

Street 4: The Broadway and Uxbridge Road



Street 4 is located from **The Broadway to Uxbridge Road**. We are suggesting a number of ideas in response to feedback received during the first round of engagement. We want your feedback to understand which of the ideas we should take forward.

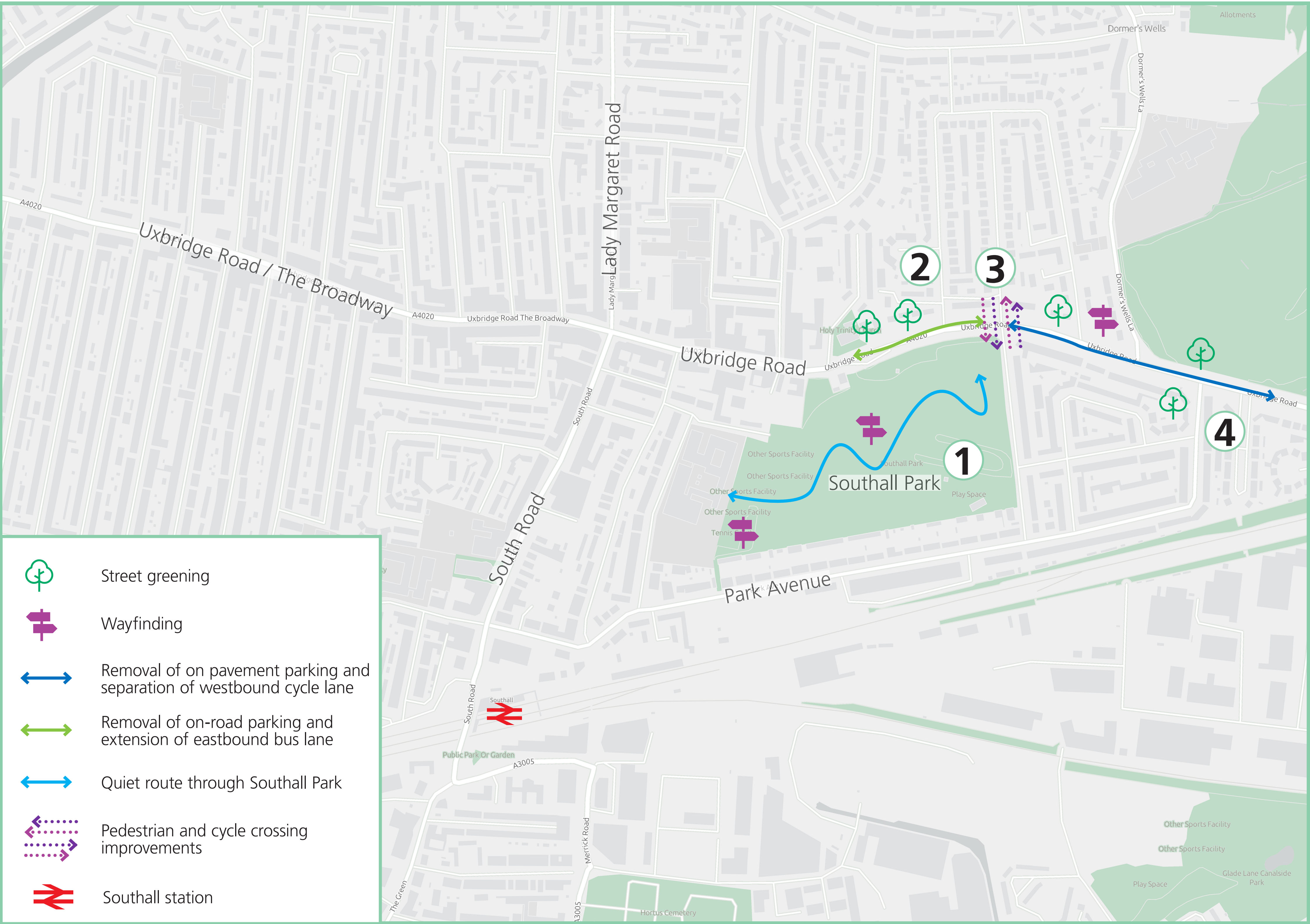
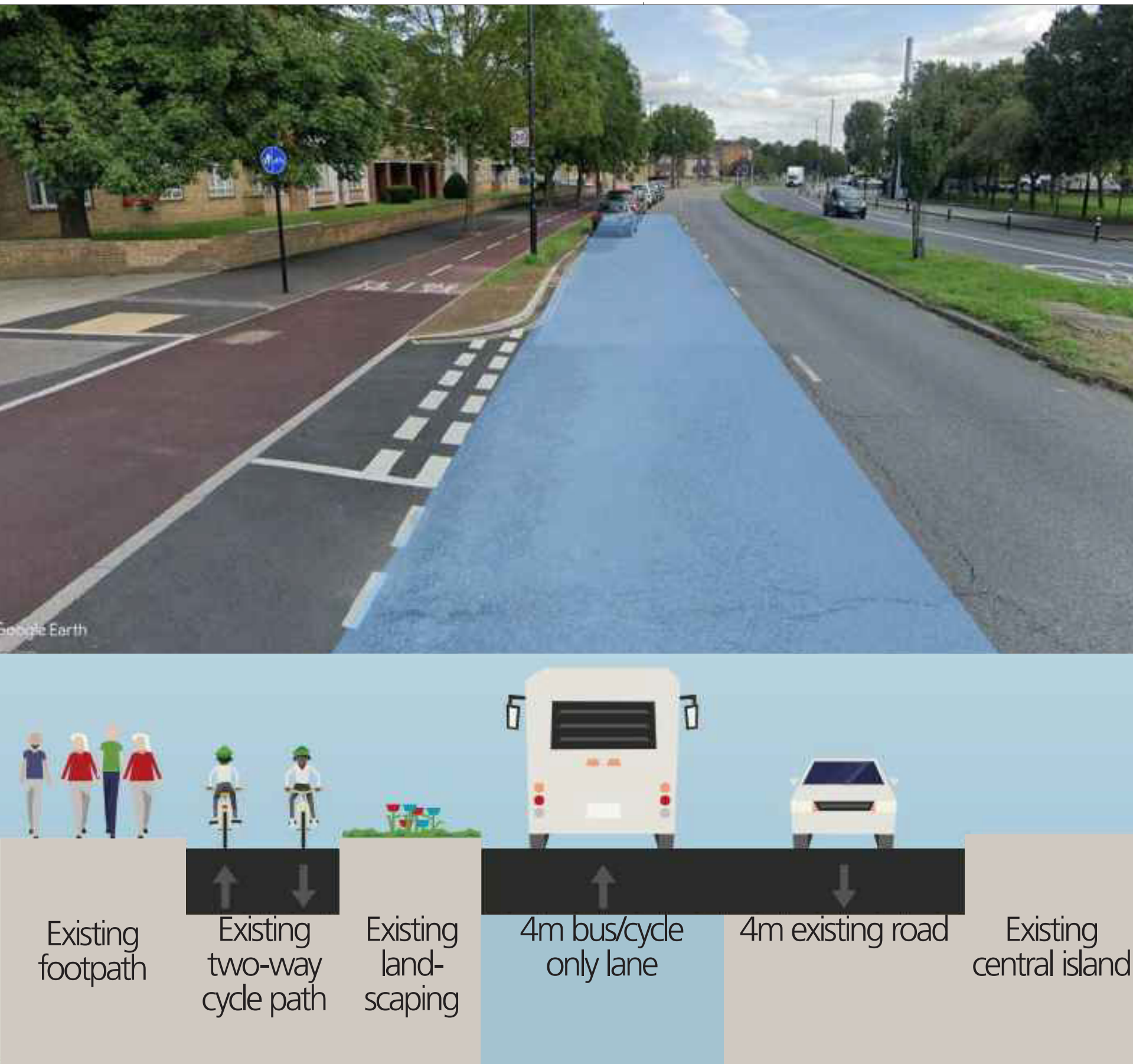
1 Southall Park

You said there are a lack of cycle lanes. Therefore, we suggest adding signs throughout Southall Park to direct cyclists from cycle lanes on Merrick and Avenue Road to existing cycle lanes on Uxbridge Road.

2 Uxbridge Road

You said bus journeys take too long due to congestion. Therefore, we suggest extending the existing eastbound bus lane on Uxbridge Road further west to the bus stop at Southall Park (westbound), by Park View Road. To do this, we would need to remove the on-road parking along this section of Uxbridge Road.

We also suggest planting trees along the entire street.



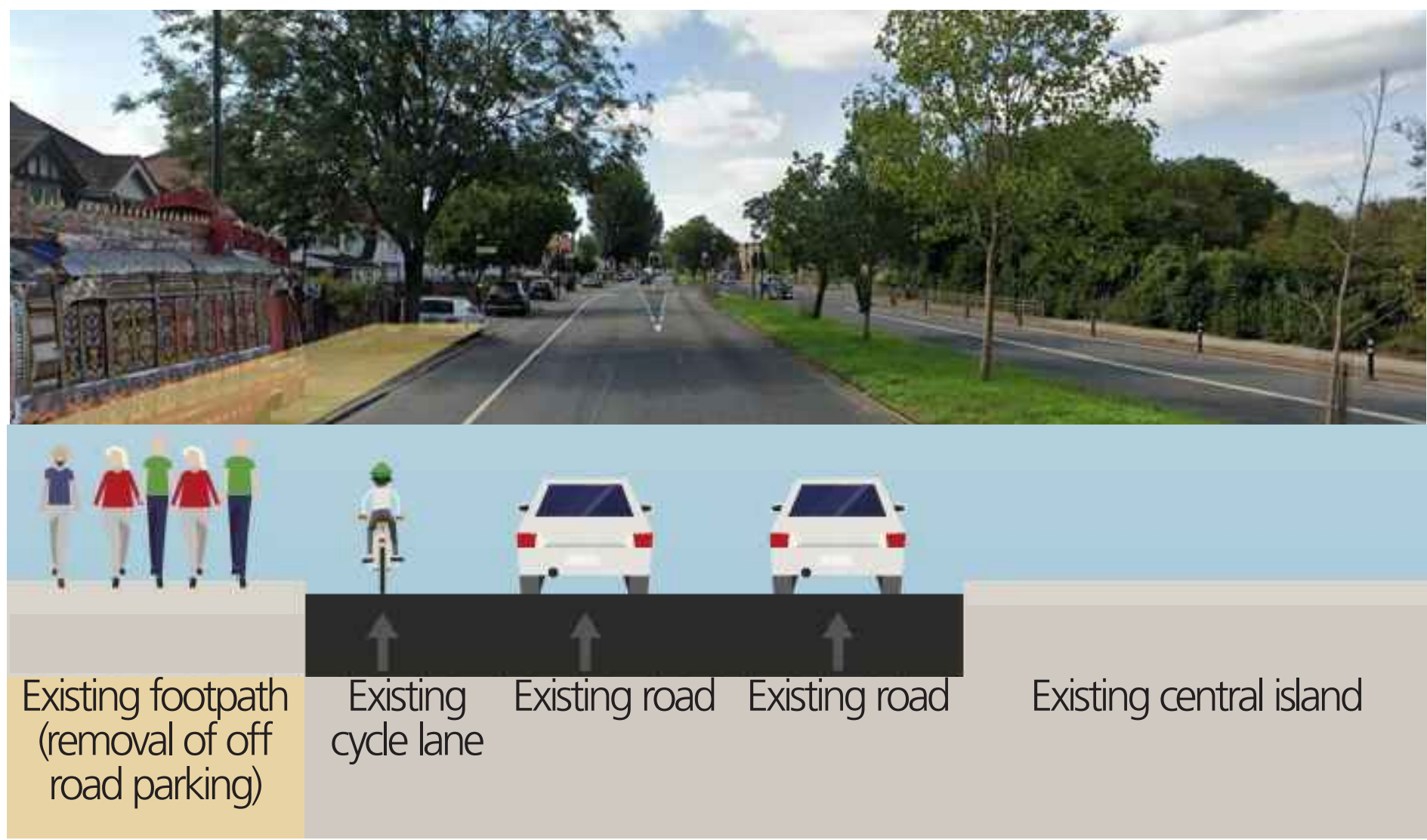
3 Green Drive

You said you want more and better connected cycle lanes. Therefore, we suggest changing the existing staggered crossing across Uxbridge Road to a single-stage crossing, with traffic lights, where cyclists and pedestrians can cross easily.



4 Uxbridge Road

You said there are a lack of cycle lanes here and it is unsafe for cyclists. Therefore, we propose to extend the barriers that are in place between traffic and cycle lanes along this section of Uxbridge Road. To do this, we would need to remove parking on the pavement to stop cars crossing the cycle lane to park.



What does it mean for Southall?

Improved walking and cycling connection between Southall Park and Uxbridge Road and safer cycle lanes.

Congestion and journey times

- There are minimal impacts to car journey times.

Safety

- Improved safety for cars and buses due to the removal of on-road parking, as vehicles will not have to change lanes to overtake vehicles parked on Uxbridge Road.
- Safer cycle lanes on Uxbridge Road as a result of the separation from traffic.

Attractive streets

- Improved connection between Southall Park and Uxbridge Road.
- More tree planting and greener streets.

Air quality

- The ideas suggested for this street are not expected to have a large impact on air quality.

Car parking

We want to extend the existing bus lane so suggest removing a number of car parking spaces. We will also keep car parking spaces at the locations shown below.

Location	Removed	Kept
The Broadway area	0	6
Uxbridge Road area	57	0
Total	57	6

These ideas are not final. When providing feedback please think about the questions below.

Are there any other ideas that we should include?

Are there any changes we should make to the suggested ideas?

Should any of ideas not be included and why?

Walking and cycling routes

Ealing Council want to make a network of cycling and walking routes across Southall so people can travel on foot and by bike more safely. This will help to reduce congestion and make the air cleaner in Southall.

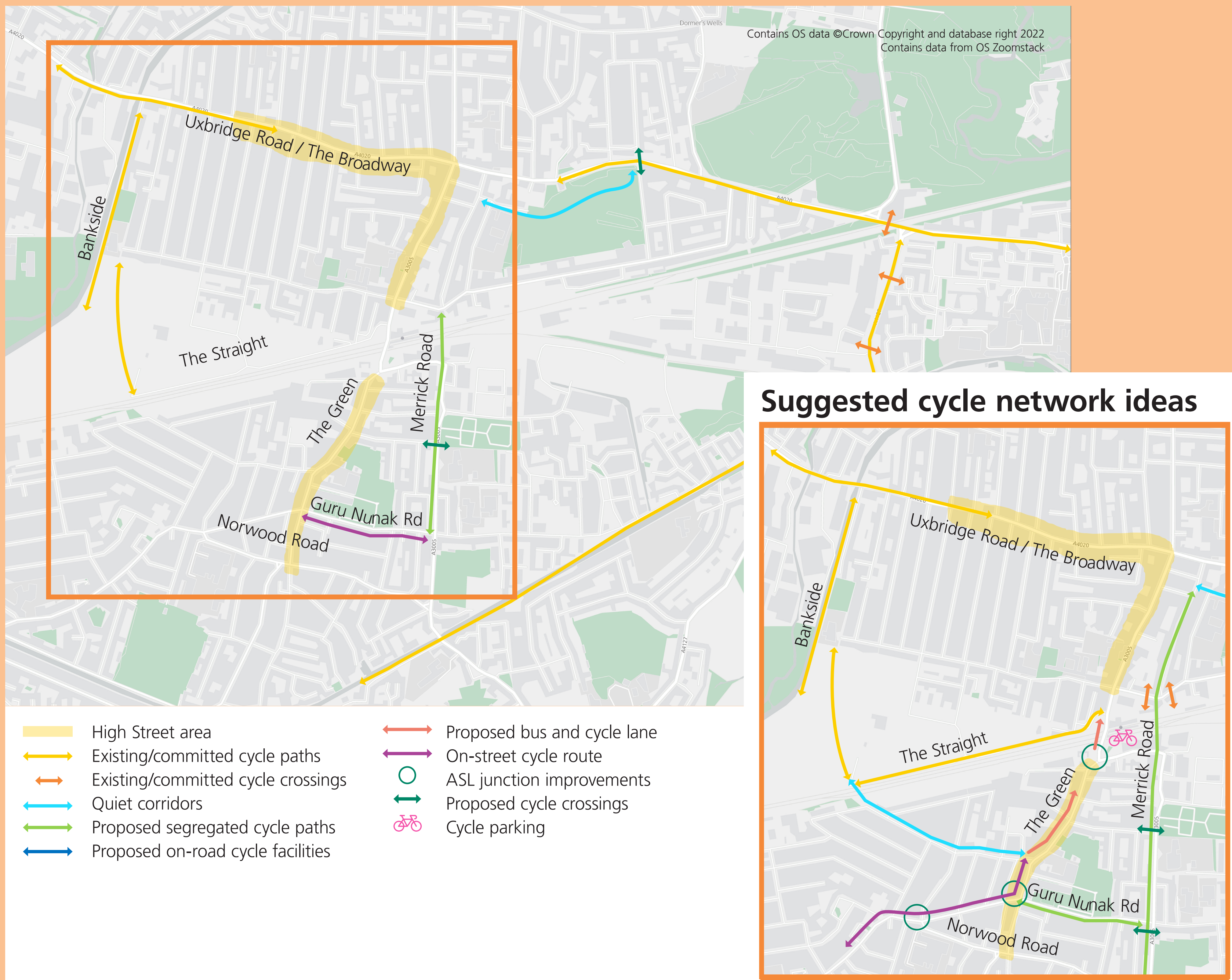
Cycle routes

Ealing Council believes it should be safer and easier to travel across Southall by bike. We are suggesting a number of ideas to improve safety and journey times for cyclists. Some examples of the main ideas include:

- Separate cycle paths, with a physical separation between traffic and cycle lanes where possible.
- Bus and cycle only lanes to reduce the number of motorised vehicles mixing with cyclists.
- Inclusion of Advanced Stop-Lines (ASLs) for cyclists, with a designated bike box at traffic lights for cyclists to wait ahead of the motorised traffic.
- Cycle lanes linking to existing cycle routes to create a larger cycle network, for example with a new cycle quietway through Southall Park linking onto Uxbridge Road.
- Shared paths for cyclists and pedestrians, which offer a better alternative to the existing cycle routes. These paths will be cleared of vegetation and have improved lighting to make them safer and more attractive to cyclists and pedestrians.
- Additional cycle parking added to the south of Southall station.

All ideas are shown on the map below.

Existing Southall cycle network



Walking routes

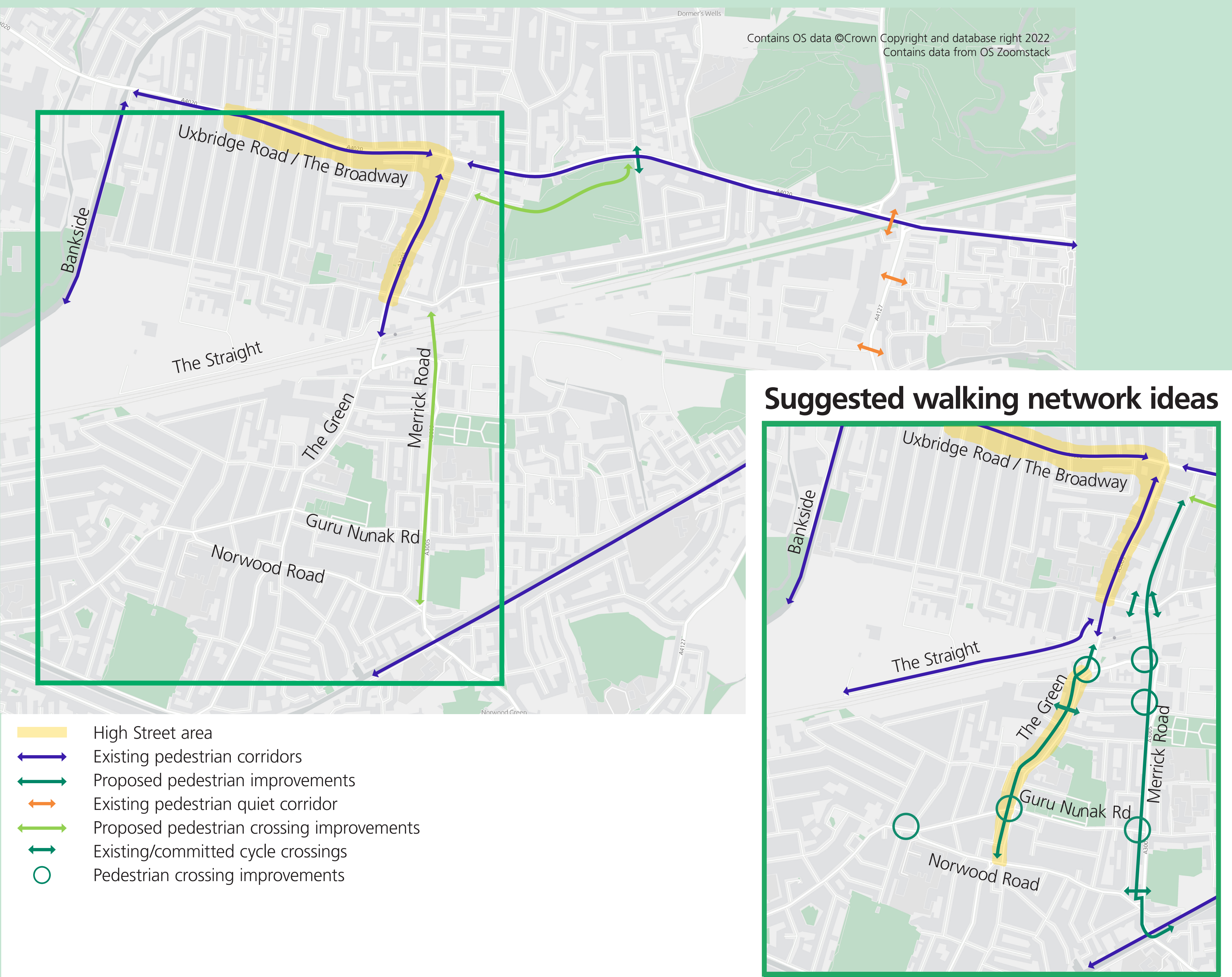
The suggested changes to the pedestrian network will ensure that pedestrians can reach their destinations quicker and safer as they will be better connected between Southall town centre, the train station and main residential areas. Travelling on foot will be more convenient, safer and comfortable.

We are suggesting a number of ideas to improve safety for pedestrians. Some examples of the main ideas include:

- Pedestrian crossing improvements such as shortening of existing crossings.
- New crossings created.
- Widened pavements.
- Shared pavements for pedestrians and cyclists.
- Clearing paths of overgrown vegetation, improving pavements, and improved lighting to ensure the safety of pedestrians.

All ideas are shown on the map below.

Existing Southall walking network



Gathering your views



Thank you for visiting

Thank you for taking the time to view the ideas for improving active travel in Southall.

Your feedback will help us better understand if and how the ideas could be adapted to best serve the needs of the community.

The consultation will close at midnight on **Sunday 25th June 2023**.

After we have reviewed your feedback, we will invite the community to view the final plans in summer 2023.

How to give your feedback

We look forward to hearing your feedback on the ideas. Feedback can be submitted by:

- Completing a hard-copy feedback form at one of our events.
- Complete our online survey using the QR code.
- Email us at: regeneration@ealing.gov.uk



Scan to complete survey

Upcoming engagement activities

There are a number of events taking place in May and June where you will have the opportunity to shape these ideas to help us better understand if and how they can be adapted to best serve the needs of the community.

For drop-in sessions, co-design workshop and the walking tour, this does not require sign up. Please feel free to turn up on the day. Focus sessions will also be taking place at faith institutions and schools in Southall.

EVENT	DATE	TIME	LOCATION
Walking tour	Thursday 4th May	2pm - 4pm	Southall Manor House, UB2 4BJ
One-to-one business visits	Wednesday 17th May	11am onwards	South of Southall Station
One-to-one business visits	Thursday 18th May	11am onwards	North of Southall Station
Drop in session 1	Saturday 27th May	2pm - 4pm	Dominion Centre, UB2 4BQ
Drop-in session 2	Thursday 8th June	2pm - 4pm	Dominion Centre, UB2 4BQ
Walking tour	Tuesday 13th June	11am - 1pm	Southall Manor House, UB2 4BJ
Online workshop	Wednesday 14th June	6pm - 7:30pm	Online*
Co-design workshop	Saturday 24th June	10am - 1pm	Dominion Centre, UB2 4BQ

*For the online workshop, please book via: www.eventbrite.com/e/get-southall-moving-tickets-624259857037



Contact us

- Find more information online: www.ealing.gov.uk/get-southall-moving
- Email us: regeneration@ealing.gov.uk
- Write to us: Perceval House, 14-16 Uxbridge Rd, London W5 2HL

If you need additional language support, please attend one of the consultation events.

ਜੇਕਰ ਤੁਹਾਨੂੰ ਵਾਧੂ ਭਾਸ਼ਾ ਸਹਾਇਤਾ ਦੀ ਲੋੜ ਹੈ, ਤਾਂ ਕਰਿਪਾ ਕਰਕੇ ਸਲਾਹ-ਮਸ਼ਵਰੇ ਦੇ ਕਮਿਟੀ ਇੱਕ ਇਕੱਠ ਵਿੱਚ ਸ਼ਾਮਲ ਹੋਵੋ।