



Ealing Fields High School

S106 Measures

Have Your Say

Public Consultation

Ealing Council

Ealing Fields High School S106 Measures

Proposals

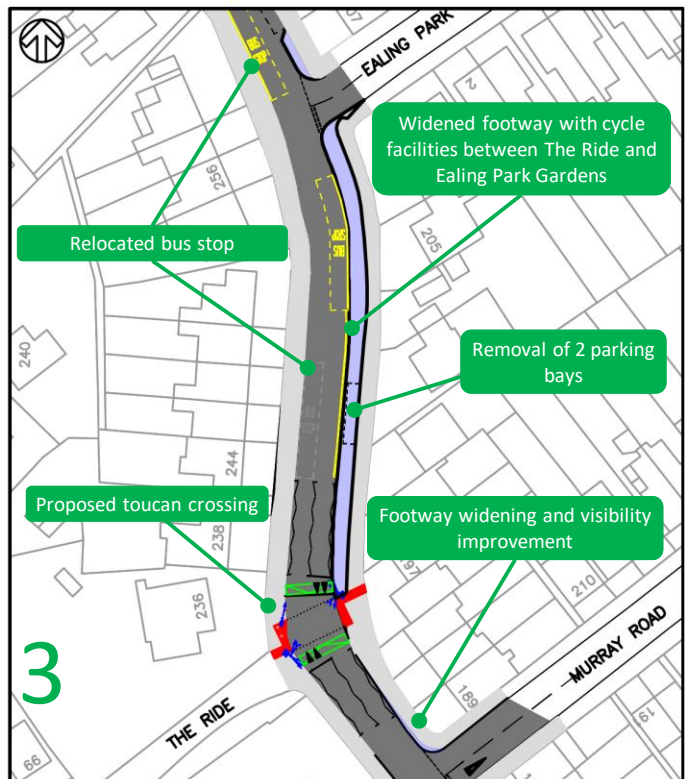
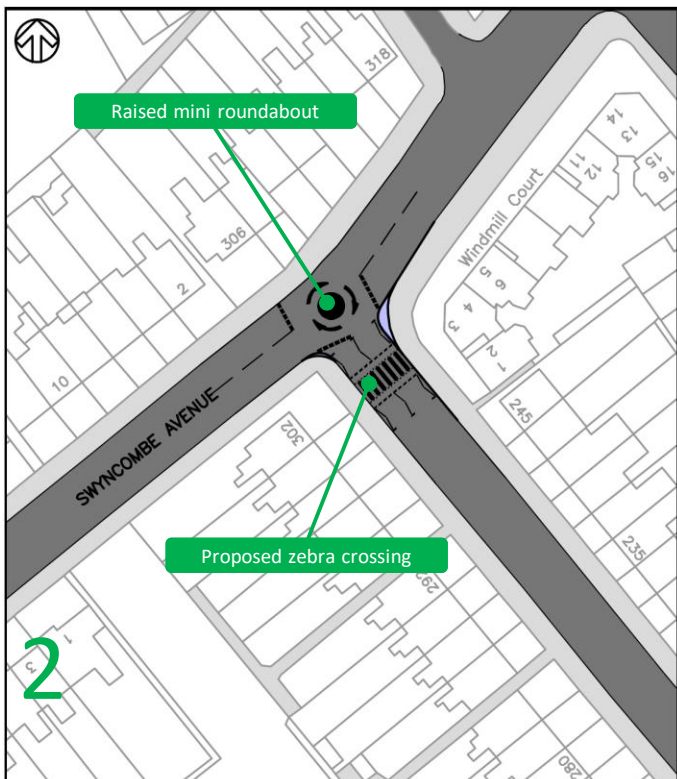
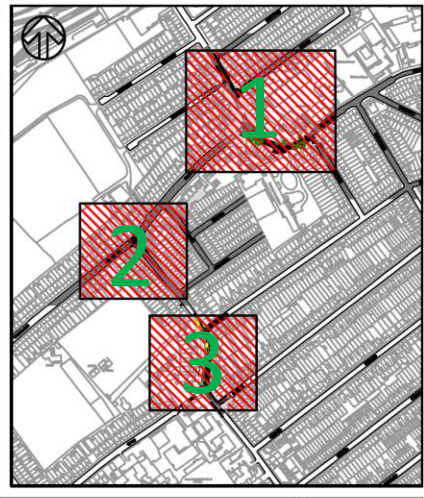
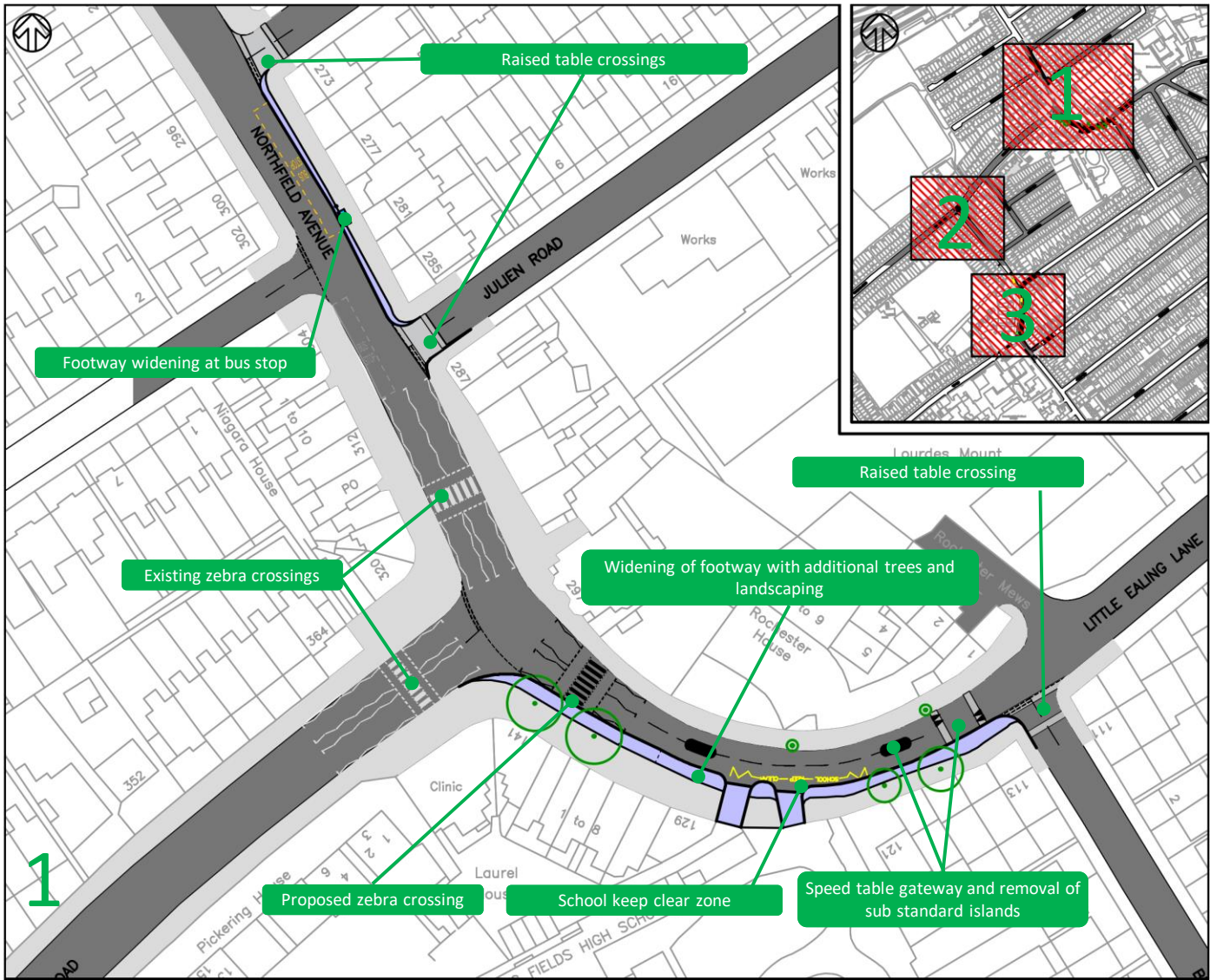
A number of measures are proposed in the area around Ealing Fields School to enhance road safety, improve pedestrians and cycles facilities and bus stop accessibility. The key elements of the scheme are as follows:

- 1) Footway widening, School Keep Clear markings and a new zebra crossing south of the junction with Windmill Road. Safety measures include a speed table and 20 mph gateway treatment.
- 2) Footway widening in Northfield Avenue between Julien Road and Wellington Road to improve accessibility to the northbound bus stop. Raised tables at the junctions with the above mentioned roads.
- 3) New Zebra Crossing on Windmill Road south of the junction with Swyncombe Avenue
- 4) Widened footway and shared use area (pedestrians and cyclists) in Windmill Road connecting The Ride to Ealing Park Gardens. Existing signalised crossing at The Ride to be upgraded to Toucan crossing (pedestrian and cyclist). Removal of two parking bays. Northbound bus stop to be relocated further north.

Benefits

- Improved and safer environment for students attending the school.
- Improved facilities for cyclists and pedestrians.
- Reduced vehicular speed along Little Ealing Lane.
- Improved access to local bus stop.
- The proposals are in line with the Mayor of London's Healthy Streets Strategy:
<https://tfl.gov.uk/corporate/about-tfl/how-we-work/planning-for-the-future/healthy-streets>

Proposed Ealing Fields High School S106 Measures



Ealing Fields High School S106 Measures



Please give us **Your Views** and **Have Your Say**

The council would like to know your views on the proposed measures. Please read this document carefully and consider the proposals. **Have Your Say** by completing the online survey at:

www.ealing.gov.uk/Ealingfieldsschool

The closing date for this consultation is:

20/07/2021

What Happens Next?

Your responses will be analysed and reported to your Ward Councillors. Taking into account the views of the residents and businesses expressed in the consultation, a decision will be taken regarding implementation of the scheme.

The results of the consultation will be published online at **www.ealing.gov.uk/consultations** around 4 weeks after the conclusion of the consultation.

Further Information

If you require further information regarding this consultation, or do not have access to the internet and would like to request a paper questionnaire, please contact us in Highway Services:

Highway Services

 highwayservices@ealing.gov.uk