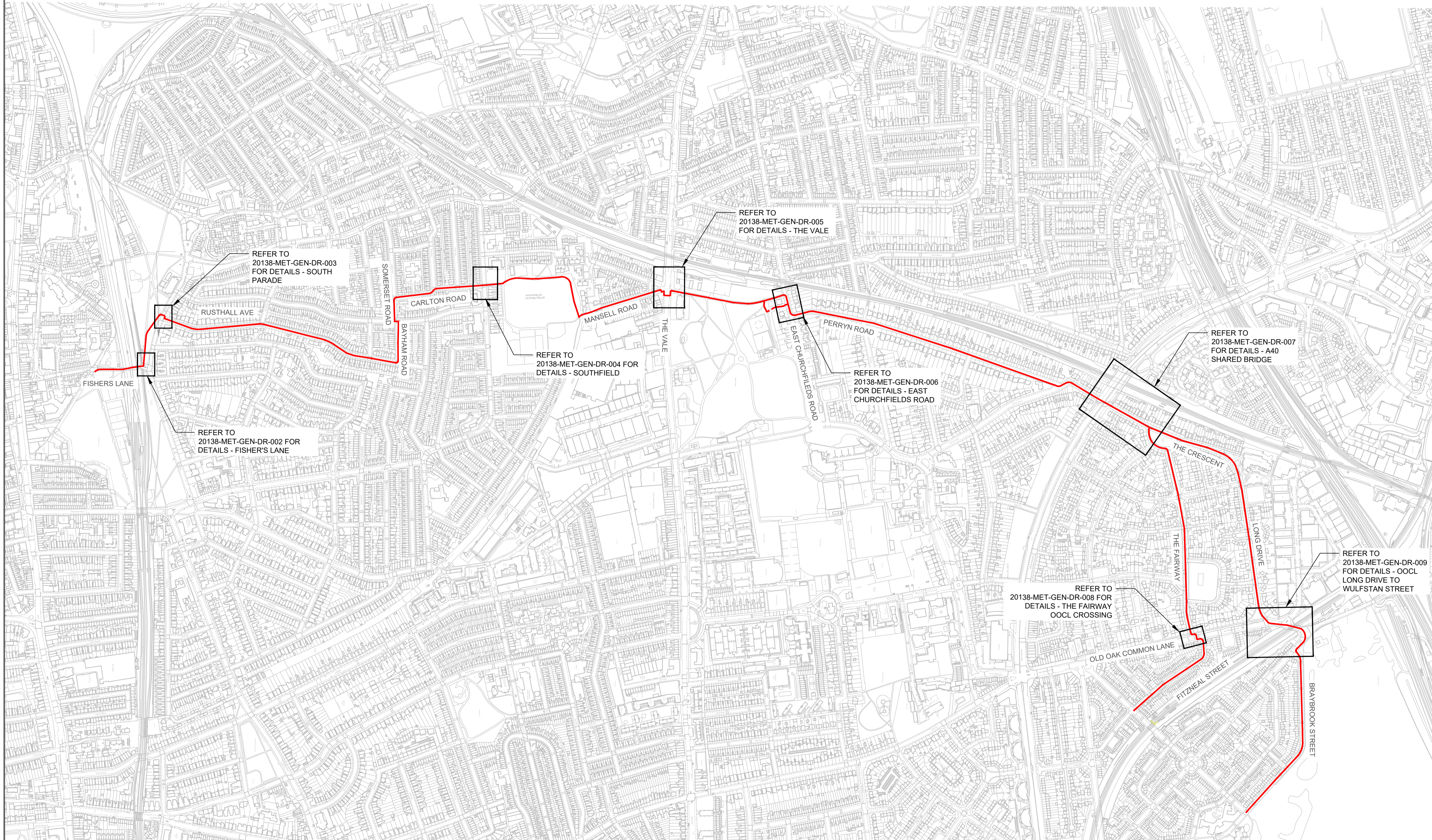


NOTES

1. THIS DRAWING SHALL BE READ IN CONJUNCTION WITH ALL METIS CONSULTANTS LTD DRAWINGS AND ALL OTHER RELEVANT ARCHITECT'S, ENGINEER'S AND LANDSCAPE ARCHITECT'S DRAWINGS AND SPECIFICATIONS.
2. ALL DIMENSIONS AND LEVELS SHOWN ARE IN METERS UNLESS INDICATED OTHERWISE.
3. DO NOT SCALE FROM THIS DRAWING.

LEGEND

— PROPOSED TEMPORARY EAST ACTON TO CHISWICK CYCLE ROUTE



A	10.09.2020	FOR APPROVAL	JB	SB	AG
REV	REV. DATE	PURPOSE OF REVISION	DRAWN	CHKD	APPRVD

METIS
metisconsultants.co.uk

Metis Consultants Ltd
4th Floor, Spence House
23 Sheen Road, Richmond
London TW9 1BN
T +44 (0)20 8948 0249
E info@metisconsultants.co.uk

Client

Project

EAST ACTON TO CHISWICK CYCLEWAY
COVID RESPONSE MEASURES

Drawing Title

SCHEME OVERVIEW

Drawing Status

FOR INFORMATION

Scale @ A1 1:5000 DO NOT SCALE

Sheet 001 of 009

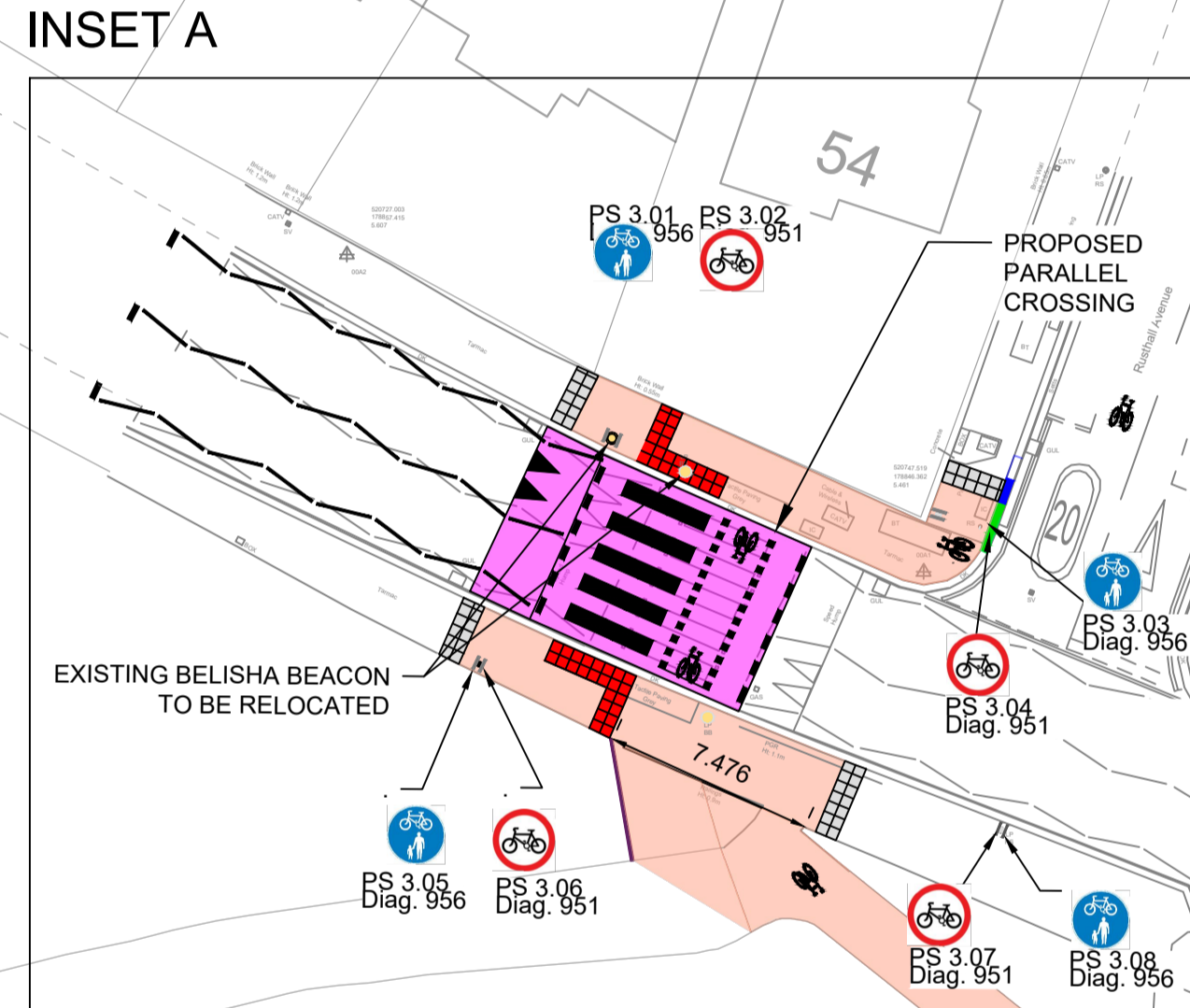
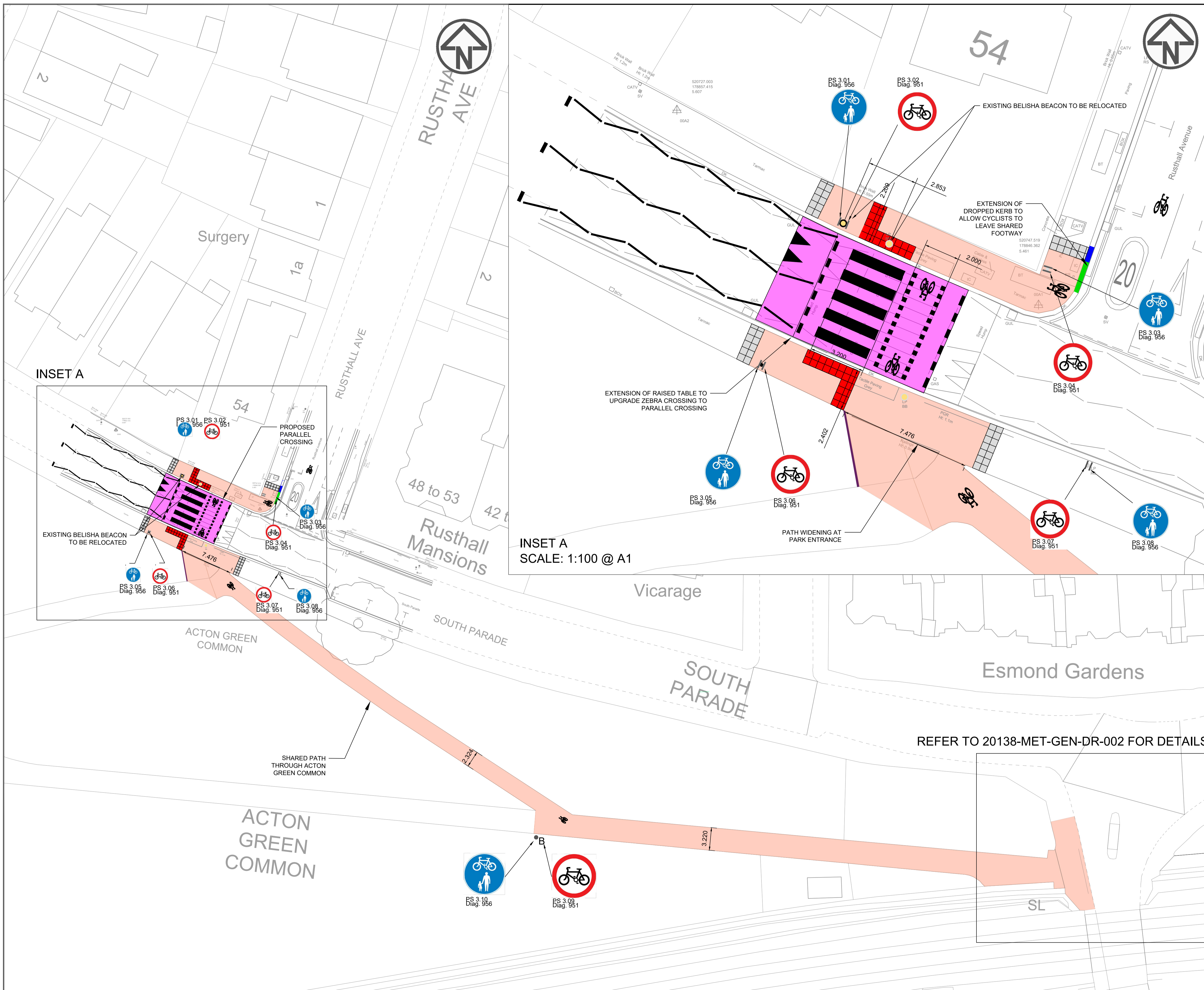
Drawing Number

20138-MET-GEN-DR-001

Rev

A

This drawing is not to be used in whole or part other than for the intended purpose and project as defined on this drawing. Refer to the contract for full terms and conditions.



INSET A
SCALE: 1:100 @ A1

- NOTES**
1. THIS DRAWING SHALL BE READ IN CONJUNCTION WITH ALL METIS CONSULTANTS LTD DRAWINGS AND ALL OTHER RELEVANT ARCHITECT'S, ENGINEER'S AND LANDSCAPE ARCHITECT'S DRAWINGS AND SPECIFICATIONS.
 2. ALL DIMENSIONS AND LEVELS SHOWN ARE IN METERS UNLESS INDICATED OTHERWISE.
 3. DO NOT SCALE FROM THIS DRAWING.
 4. LAYOUTS ARE BOTH A COMBINATION OF TOPOGRAPHICAL SURVEY AND ORDNANCE SURVEY. CLARIFICATION AND DISCREPANCIES TO BE BROUGHT TO THE ATTENTION OF THE SITE ENGINEER.
 5. ALL ROAD MARKINGS AND SIGNS TO BE IN ACCORDANCE WITH THE TRAFFIC SIGNS REGULATIONS AND GENERAL DIRECTIONS (TSRGD) 2016 AND TRAFFIC SIGNS MANUAL 2018.
 6. REFER TO "EAST ACTON TO CHISWICK CYCLEWAY COVID RESPONSE MEASURES SIGN SCHEDULE" FOR FURTHER DETAILS.
 7. SURFACE MOUNTED TACTILE PAVING SHALL BE A PLASTIC BASED PRODUCT CAPABLE OF ADHERING TO CONCRETE, NATURAL STONE, ASPHALT, METAL, WOOD AND CLAY PRODUCTS TO PROVIDE DESIRED EQUALITY ACT 2000 COMPLIANCE WITHOUT NEEDING TO DIG AND THE USE OF BEDDING MATERIALS.
 8. SURFACE MOUNTED TACTILE PAVING SHALL ACHIEVE A MINIMUM SRV OF 50.
 9. SURFACE MOUNTED TACTILE PAVING SHALL BE CORDUROY AND 400mm X 400mm.

- LEGEND**
- PROPOSED WHITE MARKINGS
 - EXISTING GRANITE KERB TO BECOME TRANSITION KERB [L: 0.9 m]
 - EXISTING GRANITE KERB TO BECOME DROPPED KERB [L: 1.8m]
 - PCC FLAT TOP EDGING TYPE EF [W: 50mm, H: 200mm, L: 4.41m]
 - BLISTER TACTILE PAVING WITH TAIL - RED (TOTAL A: 6.858m²). SEE "LBE/1100/7" FOR FURTHER DETAILS
 - PROPOSED SURFACE MOUNTED CORDUROY TACTILE - GREY (TOTAL A: 7.28m²)
 - SHARED SPACE [A:377.39m²]
 - EXTENSION OF EXISTING RAISED TABLE. SEE "LBE/1100/17" FOR FURTHER DETAILS
 - RELOCATED BELISHA BEACON [QTY: 1]
 - EXISTING BELISHA BEACON
 - PROPOSED BOLLARD [QTY: 1]

REV	REV. DATE	PURPOSE OF REVISION	DRAWN	CHKD	APPRVD
A	10.09.2020	FOR APPROVAL	JB	SB	AG

metisconsultants.co.uk

Metis Consultants Ltd
 4th Floor, Spence House
 23 Sheen Road, Richmond
 London TW9 1SN
 T +44 (0)20 8948 0249
 E info@metisconsultants.co.uk

Client:

Project: EAST ACTON TO CHISWICK CYCLEWAY COVID RESPONSE MEASURES

Drawing Title: SOUTH PARADE GENERAL ARRANGEMENT

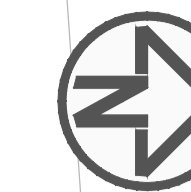
Drawing Status: FOR INFORMATION

Scale: @ A1 1:250 DO NOT SCALE

Sheet: 003 of 009

Drawing Number: 20138-MET-GEN-DR-003 Rev: A

This drawing is not to be used in whole or part other than for the intended purpose and project as defined on this drawing. Refer to the contract for full terms and conditions.



NOTES

1. THIS DRAWING SHALL BE READ IN CONJUNCTION WITH ALL METIS CONSULTANTS LTD DRAWINGS AND ALL OTHER RELEVANT ARCHITECTS, ENGINEER'S AND LANDSCAPE ARCHITECTS DRAWINGS AND SPECIFICATIONS.
2. ALL DIMENSIONS SHOWN ARE IN METERS UNLESS OTHERWISE STATED.
3. DO NOT SCALE FROM THIS DRAWING.
4. LAYOUTS ARE A COMBINATION OF BOTH TOPOGRAPHICAL SURVEY AND ORDNANCE SURVEY. CLARIFICATION AND DISCREPANCIES TO BE BROUGHT TO THE ATTENTION OF THE SITE ENGINEER.
5. ALL ROAD MARKINGS AND SIGNS TO BE IN ACCORDANCE WITH THE TRAFFIC SIGNS REGULATION AND GENERAL DIRECTIONS (TSRGD) 2016 TRAFFIC SIGNS MANUAL 2018.
6. ALL SIGNS TO HAVE A VERTICAL CLEARANCE OF 2.4m FROM FOOTWAY SURFACE AND A HORIZONTAL CLEARANCE OF 0.45m FROM THE EDGE OF CARRIAGEWAY.
7. REFER TO "EAST ACTON TO CHISWICK CYCLEWAY COVID RESPONSE MEASURES SIGN SCHEDULE" FOR FURTHER DETAILS.
8. SURFACE MOUNTED TACTILE PAVING SHALL BE A PLASTIC BASED PRODUCT CAPABLE OF ADHERING TO CONCRETE, NATURAL STONE, ASPHALT, METAL, WOOD AND CLAY PRODUCT TO PROVIDE DESIRED EQUALITY ACT 2000 COMPLIANCE WITHOUT NEEDING TO DIG AND THE USE OF BEDDING MATERIALS.
9. SURFACE MOUNTED TACTILE PAVING SHALL ACHIEVE A MINIMUM SRV OF 50.
10. SURFACE MOUNTED TACTILE PAVING SHALL BE CORDUROY AND 400mm X 400mm.
8. SIGN INSTALLATION AS PER "LBE/1200/01".
9. SIGN FOUNDATION DETAILS AS PER "LBE/1200/02".
10. BOLLARD DETAIL "MANCHESTER OR HARDWOOD" AS PER "LBE/3501/08".

LEGEND

- SHARED SPACE [A: 12.51m²]
- MANCHESTER OR HARDWOOD BOLLARD AS PER "LBE/3501/08": 3
- BOLTED DOWN WANDS: 3
- PARKING BAY TO BE REMOVED
- SURFACE MOUNTED ADHESIVE CORDUROY TACTILE PAVING - GREY [A: 4.15m²]
- PROPOSED LINE MARKING WHITE
- PROPOSED LINE MARKING YELLOW
- EXISTING SIGN POST AND PROPOSED SIGN FACE
- PROPOSED SIGN POST AND PROPOSED SIGN FACE

REV	REV. DATE	PURPOSE OF REVISION	DRAWN	CHKD	APPRVD
A	10.09.2020	FOR APPROVAL	DB	SB	AG

METIS metisconsultants.co.uk
 Metis Consultants Ltd
 4th Floor, Spence House
 23 Sheen Road, Richmond
 London TW9 1SN
 T +44 (0)20 8948 0249
 E info@metisconsultants.co.uk

Client: **Ealing**

Project: EAST ACTON TO CHISWICK CYCLEWAY COVID RESPONSE MEASURES

Drawing Title: SOUTHFIELD ROAD GENERAL ARRANGMENT

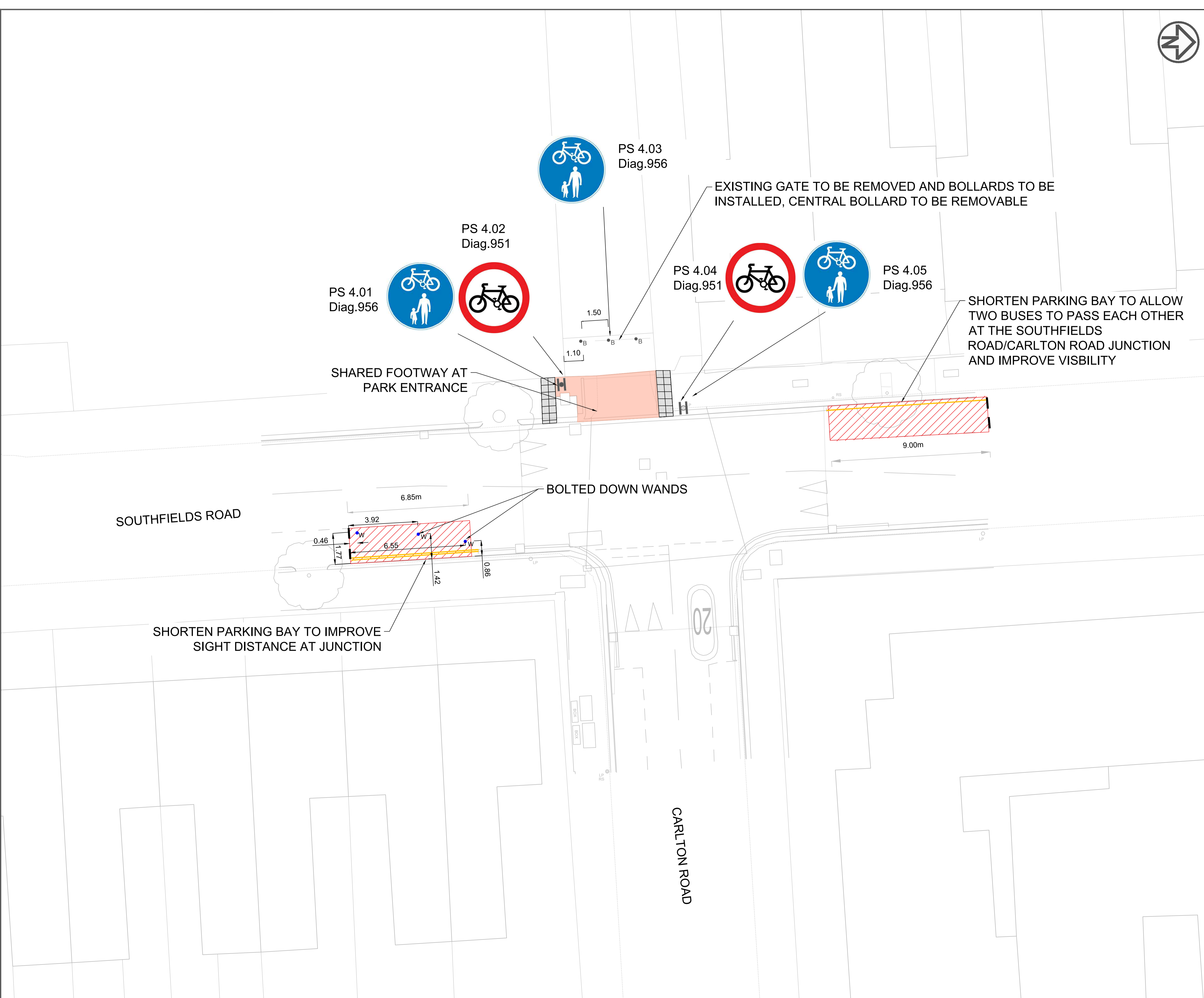
Drawing Status: FOR INFORMATION

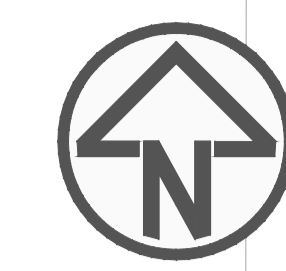
Scale: @ A1 NOT TO SCALE | DO NOT SCALE

Sheet: 004 of 009

Drawing Number: 20138-MET-GEN-DR-004 | Rev: A

This drawing is not to be used in whole or part other than for the intended purpose and project as defined on this drawing. Refer to the contract for full terms and conditions.





- NOTES**
1. THIS DRAWING SHALL BE READ IN CONJUNCTION WITH ALL METIS CONSULTANTS LTD DRAWINGS, AND OTHER RELEVANT ARCHITECT'S, ENGINEER'S AND LANDSCAPE ARCHITECT'S DRAWINGS AND SPECIFICATIONS.
 2. ALL DIMENSIONS SHOWN ARE IN METERS UNLESS OTHERWISE STATED.
 3. DO NOT SCALE FROM THIS DRAWING.
 4. LAYOUTS ARE A COMBINATION OF BOTH TOPOGRAPHICAL SURVEY AND ORDNANCE SURVEY. CLARIFICATION AND DISCREPANCIES TO BE BROUGHT TO THE ATTENTION OF THE SITE ENGINEER.
 5. ALL ROAD MARKINGS AND SIGNS TO BE IN ACCORDANCE WITH THE TRAFFIC SIGNS REGULATIONS AND GENERAL DIRECTIONS (TSRGD) 2016 AND TRAFFIC SIGNS MANUAL 2018 AS PER THE SIGN SCHEDULE TO BE READ IN CONJUNCTION WITH THIS DRAWING.
 6. ALL SIGNS TO HAVE A VERTICAL CLEARANCE OF 2.4m FROM FOOTWAY SURFACE AND A HORIZONTAL CLEARANCE OF 0.45m FROM THE EDGE OF CARRIAGEWAY.
 7. REFER TO "EAST ACTON TO CHISWICK CYCLEWAY COVID RESPONSE MEASURES SIGN SCHEDULE" FOR FURTHER DETAILS.

- LEGEND**
- PROPOSED WHITE ROAD MARKINGS
 - PROPOSED POST AND PROPOSED SIGN
 - EXISTING POST AND EXISTING SIGN



PS 5.02 - PROPOSED PARALLEL CROSSING SIGN ON EXISTING POST

12, 28, 20 (Diag. 2601.2)



12, 28, 20 (Diag. 2601.2)

PS 5.01 - PROPOSED TOUCAN CROSSING SIGN ON EXISTING LAMP POST. PARKING RESTRICTION SIGN TO BE REMOVED.

EXISTING TOUCAN CROSSING

EXISTING WAYFINDING

BIRKBECK GROVE

MANSELL ROAD

VALE GROVE

Bryant Court

1 to 42

The Lodge

Trough

THE VALE

Ward Bdy

A	10.09.2020	FOR APPROVAL	JB	SB	AG
REV	REV. DATE	PURPOSE OF REVISION	DRAWN	CHKD	APPRVD

METIS metisconsultants.co.uk
 Metis Consultants Ltd
 4th Floor, Spence House
 23 Sheen Road, Richmond
 London TW9 1SN
 T +44 (0)20 8948 0249
 E info@metisconsultants.co.uk

Client:

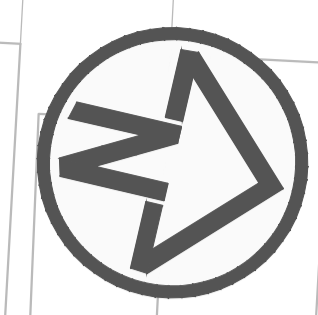
Project: EAST ACTON TO CHISWICK CYCLEWAY COVID RESPONSE MEASURES

Drawing Title: THE VALE GENERAL ARRANGEMENT

Drawing Status: FOR INFORMATION
 Scale: @ A1 1:200 DO NOT SCALE
 Sheet: 005 of 009

Drawing Number: 20138-MET-GEN-DR- 005 Rev: A

This drawing is not to be used in whole or part other than for the intended purpose and project as defined on this drawing. Refer to the contract for full terms and conditions.



- NOTES**
1. THIS DRAWING SHALL BE READ IN CONJUNCTION WITH ALL METIS CONSULTANTS LTD DRAWINGS, AND OTHER RELEVANT ARCHITECT'S, ENGINEER'S AND LANDSCAPE ARCHITECT'S DRAWINGS AND SPECIFICATIONS.
 2. ALL DIMENSIONS SHOWN ARE IN METERS UNLESS OTHERWISE STATED.
 3. DO NOT SCALE FROM THIS DRAWING.
 4. LAYOUTS ARE A COMBINATION OF BOTH TOPOGRAPHICAL SURVEY AND ORDNANCE SURVEY. CLARIFICATION AND DISCREPANCIES TO BE BROUGHT TO THE ATTENTION OF THE SITE ENGINEER.
 5. ALL ROAD MARKINGS AND SIGNS TO BE IN ACCORDANCE WITH THE TRAFFIC SIGNS REGULATIONS AND GENERAL DIRECTIONS (TSRGD) 2016 AND TRAFFIC SIGNS MANUAL 2018 AS PER THE SIGN SCHEDULE TO BE READ IN CONJUNCTION WITH THIS DRAWING.
 6. ALL SIGNS TO HAVE A VERTICAL CLEARANCE OF 2.4m FROM FOOTWAY SURFACE AND A HORIZONTAL CLEARANCE OF 0.45m FROM THE EDGE OF CARRIAGEWAY.
 7. REFER TO "EAST ACTON TO CHISWICK CYCLEWAY COVID RESPONSE MEASURES SIGN SCHEDULE" FOR FURTHER DETAILS

- LEGEND**
- EXISTING POST AND PROPOSED SIGN
 - EXISTING POST AND EXISTING SIGN

A	10.09.2020	FOR APPROVAL	JB	SB	AG
REV	REV. DATE	PURPOSE OF REVISION	DRAWN	CHKD	APPRVD

METIS
metisconsultants.co.uk

Metis Consultants Ltd
4th Floor, Spence House
23 Sheen Road, Richmond
London TW9 1SN
T +44 (0)20 8948 0249
E info@metisconsultants.co.uk

Client: **Ealing**

Project: EAST ACTON TO CHISWICK CYCLEWAY COVID RESPONSE MEASURES

Drawing Title: EAST CHURCHFIELDS ROAD GENERAL ARRANGEMENT

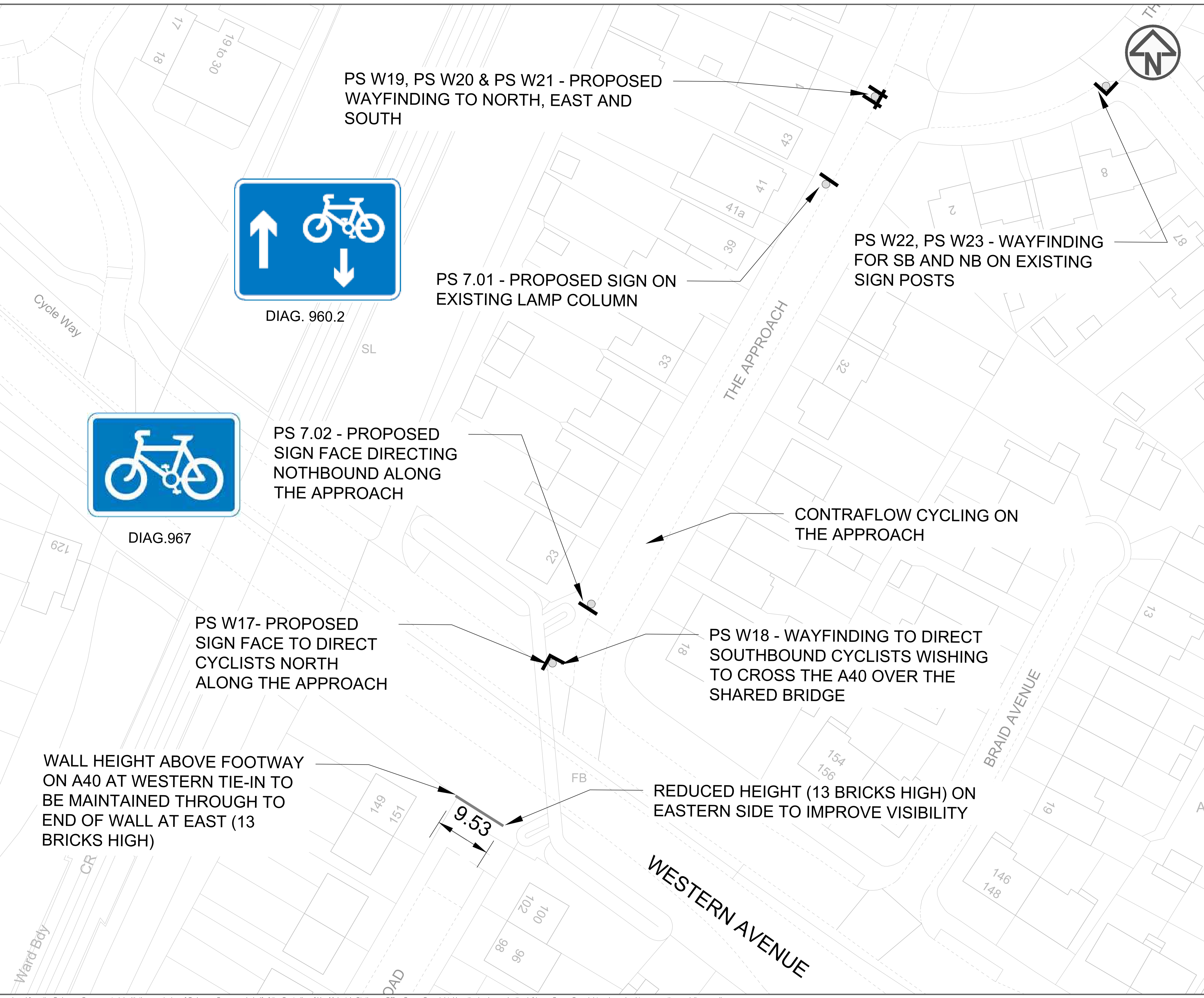
Drawing Status: FOR INFORMATION

Scale: @ A1 1:300 DO NOT SCALE

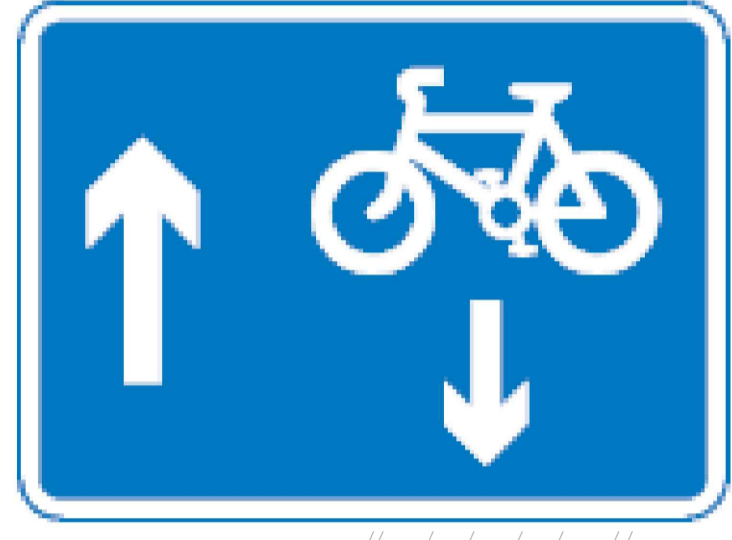
Sheet: 006 of 009

Drawing Number: 20138-MET-GEN-DR-006 Rev: A

This drawing is not to be used in whole or part other than for the intended purpose and project as defined on this drawing. Refer to the contract for full terms and conditions.



PS W19, PS W20 & PS W21 - PROPOSED WAYFINDING TO NORTH, EAST AND SOUTH



DIAG. 960.2

PS 7.01 - PROPOSED SIGN ON EXISTING LAMP COLUMN

PS W22, PS W23 - WAYFINDING FOR SB AND NB ON EXISTING SIGN POSTS



DIAG. 967

PS 7.02 - PROPOSED SIGN FACE DIRECTING NORTHBOUND ALONG THE APPROACH

CONTRAFLOW CYCLING ON THE APPROACH

PS W17- PROPOSED SIGN FACE TO DIRECT CYCLISTS NORTH ALONG THE APPROACH

PS W18 - WAYFINDING TO DIRECT SOUTHBOUND CYCLISTS WISHING TO CROSS THE A40 OVER THE SHARED BRIDGE

WALL HEIGHT ABOVE FOOTWAY ON A40 AT WESTERN TIE-IN TO BE MAINTAINED THROUGH TO END OF WALL AT EAST (13 BRICKS HIGH)

9.53

REDUCED HEIGHT (13 BRICKS HIGH) ON EASTERN SIDE TO IMPROVE VISIBILITY

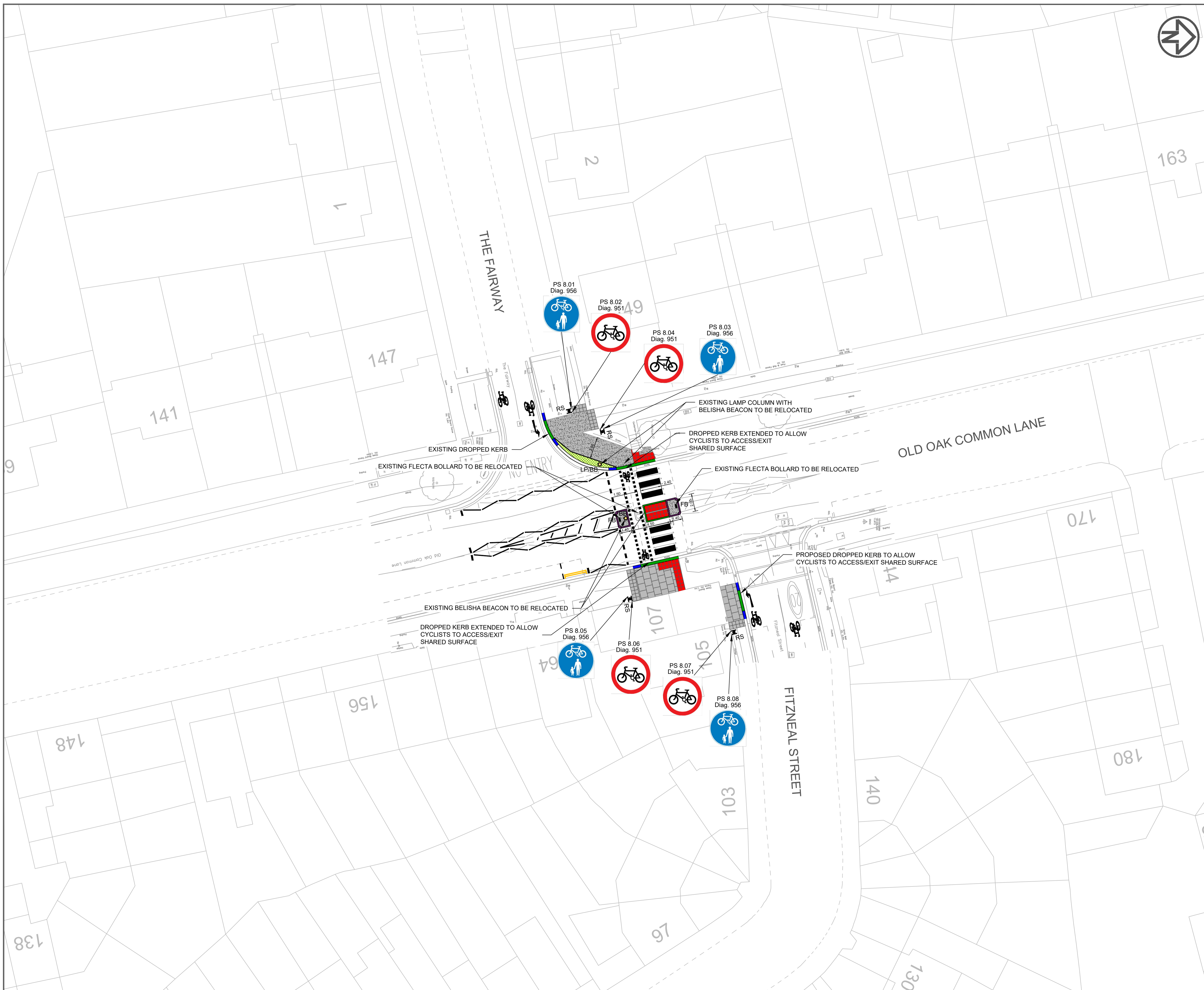
WESTERN AVENUE



- NOTES**
- THIS DRAWING SHALL BE READ IN CONJUNCTION WITH ALL METIS CONSULTANTS LTD DRAWINGS, AND OTHER RELEVANT ARCHITECT'S, ENGINEER'S AND LANDSCAPE ARCHITECT'S DRAWINGS AND SPECIFICATIONS.
 - ALL DIMENSIONS SHOWN ARE IN METERS UNLESS OTHERWISE STATED.
 - DO NOT SCALE FROM THIS DRAWING.
 - LAYOUTS ARE A COMBINATION OF BOTH TOPOGRAPHICAL SURVEY AND ORDNANCE SURVEY. CLARIFICATION AND DISCREPANCIES TO BE BROUGHT TO THE ATTENTION OF THE SITE ENGINEER.
 - ALL ROAD MARKINGS AND SIGNS TO BE IN ACCORDANCE WITH THE TRAFFIC SIGNS REGULATIONS AND GENERAL DIRECTIONS (TSRGD) 2016 AND TRAFFIC SIGNS MANUAL 2018 AS PER THE SIGN SCHEDULE TO BE READ IN CONJUNCTION WITH THIS DRAWING.
 - ALL SIGNS TO HAVE A VERTICAL CLEARANCE OF 2.4m FROM FOOTWAY SURFACE AND A HORIZONTAL CLEARANCE OF 0.45m FROM THE EDGE OF CARRIAGEWAY.
 - REFER TO "EAST ACTON TO CHISWICK CYCLEWAY COVID RESPONSE MEASURES SIGN SCHEDULE" FOR FURTHER DETAILS.

- LEGEND**
- EXISTING WALL
 - EXISTING POST AND PROPOSED SIGN
 - EXISTING POST AND EXISTING SIGN

A	10.09.2020	FOR APPROVAL	DB	SB	AG
REV	REV. DATE	PURPOSE OF REVISION	DRAWN	CHKD	APPRVD
		Metis Consultants Ltd 4th Floor, Spence House 23 Sheen Road, Richmond London TW9 1BN T +44 (0)20 8948 0249 E info@metisconsultants.co.uk			
Client					
Project		EAST ACTON TO CHISWICK CYCLEWAY COVID RESPONSE MEASURES			
Drawing Title		A40 SHARED BRIDGE GENERAL ARRANGEMENT			
Drawing Status		FOR INFORMATION			
Scale		@ A1 1:300	DO NOT SCALE		
Sheet		007 of 009			
Drawing Number		20138-MET-GEN-DR-007		Rev A	
This drawing is not to be used in whole or part other than for the intended purpose and project as defined on this drawing. Refer to the contract for full terms and conditions.					



- NOTES**
1. THIS DRAWING SHALL BE READ IN CONJUNCTION WITH ALL METIS CONSULTANTS LTD DRAWINGS, AND OTHER RELEVANT ARCHITECT'S, ENGINEER'S AND LANDSCAPE ARCHITECT'S DRAWINGS AND SPECIFICATIONS.
 2. ALL DIMENSIONS SHOWN ARE IN METERS UNLESS OTHERWISE STATED.
 3. DO NOT SCALE FROM THIS DRAWING.
 4. LAYOUTS ARE A COMBINATION OF BOTH TOPOGRAPHICAL SURVEY AND ORDNANCE SURVEY. CLARIFICATION AND DISCREPANCIES TO BE BROUGHT TO THE ATTENTION OF THE SITE ENGINEER.
 5. ALL ROAD MARKINGS AND SIGNS TO BE IN ACCORDANCE WITH THE TRAFFIC SIGNS REGULATIONS AND GENERAL DIRECTIONS (TSRGD) 2016 AND TRAFFIC SIGNS MANUAL 2018 AS PER THE SIGN SCHEDULE TO BE READ IN CONJUNCTION WITH THIS DRAWING.
 6. ALL SIGNS TO HAVE A VERTICAL CLEARANCE OF 2.4m FROM FOOTWAY SURFACE AND A HORIZONTAL CLEARANCE OF 0.45m FROM THE EDGE OF CARRIAGEWAY.
 7. REFER TO "EAST ACTON TO CHISWICK CYCLEWAY COVID RESPONSE MEASURES SIGN SCHEDULE" FOR FURTHER DETAILS.
 8. SURFACE MOUNTED TACTILE PAVING SHALL BE A PLASTIC BASED PRODUCT CAPABLE OF ADHERING TO CONCRETE, NATURAL STONE, ASPHALT, METAL, WOOD AND CLAY PRODUCTS TO PROVIDE DESIRED EQUALITY ACT 2000 COMPLIANCE WITHOUT NEEDING TO DIG AND THE USE OF BEDDING MATERIALS.
 9. SURFACE MOUNTED TACTILE PAVING SHALL ACHIEVE A MINIMUM SRV OF 50.
 10. SURFACE MOUNTED TACTILE PAVING SHALL BE CORDUROY AND 400mm X 400mm.

- LEGEND**
- PROPOSED WHITE MARKINGS
 - PROPOSED YELLOW MARKINGS
 - GRANITE KERB [W: 150mm, H: 300mm]
 - GRANITE TRANSITION KERB
 - GRANITE DROPPED KERB
 - PCC FLAT TOP EDGING TYPE EF [W: 50mm, H: 200mm]
 - BLISTER TACTILE PAVING WITH TAIL - RED, SEE "LBE/1100/07" FOR FURTHER DETAILS
 - PROPOSED SURFACE MOUNTED CORDUROY TACTILE - GREY
 - FLECTABLE SURFACING, SEE "LBE/1100/06" FOR FURTHER DETAILS
 - REINSTATED PAVING SLABS, SEE "LBE/1100/07" FOR FURTHER DETAILS
 - GRASS VERGE
 - BB ○ RELOCATED BELISHA BEACON
 - LP/BB ○ RELOCATED LAMP COLUMN WITH BELISHA BEACON
 - FB ■ RELOCATED FLECTA BOLLARD
 - RS ■ PROPOSED SIGN POST AND PROPOSED SIGN FACE

A	14/09/2020	FOR REVIEW	DD	SB	AG
REV	REV. DATE	PURPOSE OF REVISION	DRAWN	CHKD	APPRVD

METIS metisconsultants.co.uk

Metis Consultants Ltd
4th Floor, Spence House
23 Sheen Road, Richmond
London TW9 1SR
T +44 (0)20 8948 0249
E info@metisconsultants.co.uk

Client: **Ealing**

Project: **EAST ACTON TO CHISWICK CYCLEWAY COVID RESPONSE MEASURES**

Drawing Title: **THE FAIRWAY/
OLD OAK COMMON LANE
GENERAL ARRANGMENT**

Drawing Status: **FOR INFORMATION**

Scale: @ A1 1:200 DO NOT SCALE

Sheet: 008 of 009

Drawing Number: **20138-MET-GEN-DR- 008** Rev: **A**

This drawing is not to be used in whole or part other than for the intended purpose and project as defined on this drawing. Refer to the contract for full terms and conditions.

