

Welcome to the Gurnell Public Consultation



Speakers

Cllr Bassam Mahfouz, Cabinet Member for Finance and Leisure

Adam Whalley, Ealing Council

Gregor Mitchell, EcoWorld International

Public consultations to date

19th
May 2016

14th
July 2016

26th
January 2017

21st
March 2018

9th
June 2016

20th
October 2016

30th & 31st
October 2017

25th & 28th
September 2019

Regionally significant public sport and leisure hub

**50m swimming pool
& separate fun pool**

**Large 100+ station
gym**

**Three large studios
with sprung floors**

**Children's indoor soft
place area**

**612 residential homes
(35% affordable)**

**Two new commercial
properties to serve the
local community**

**Low carbon energy
solution with air source
heat pumps**

**175 leisure spaces
168 residential spaces
4 coach parking spaces
Two drop-off areas
Over 1,100 cycle spaces**

Timescales

October
2019

Determination
of planning
application

Quarter 2
2020

* Opening of
new leisure
centre

Submission
of planning
application to
Ealing Council

Quarter 1
2020

* Closure of the
existing centre
and start on site

2023

** subject to planning permission being granted*

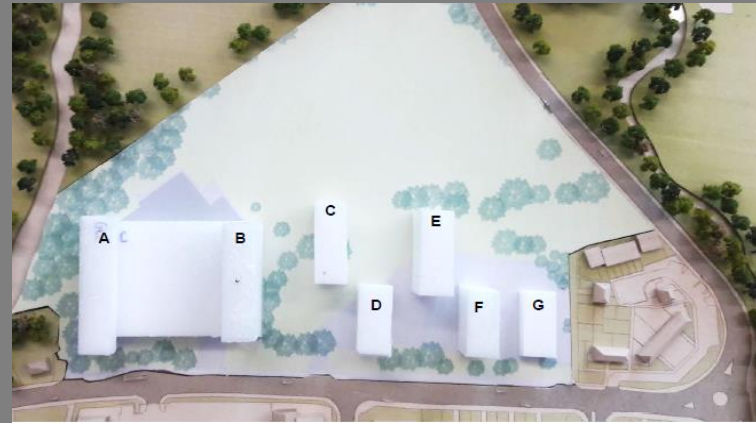
Design development

Previous consultations

October
2017



March
2018

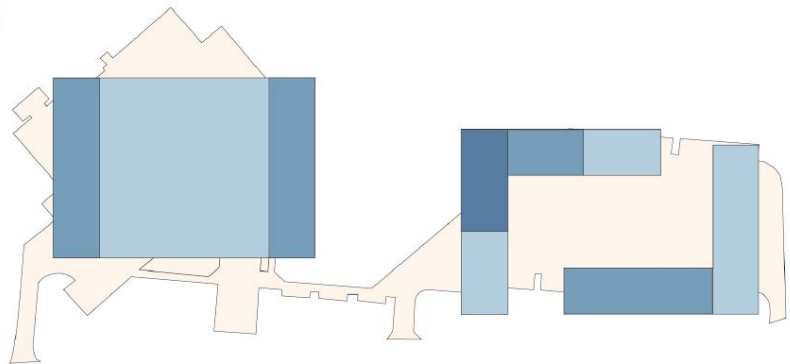




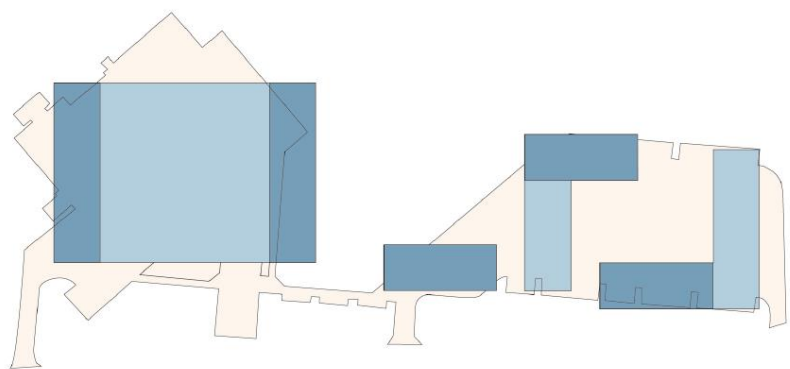
Concept brief

- Minimum impact on Metropolitan Open Land and neighbours
- Create places for people with the leisure centre at its heart.
- Enhance green ribbon through landscaped zones and outdoor spaces.
- Increased light into the open spaces by separating the buildings
- Focus on pedestrian experience, accessibility and public realm

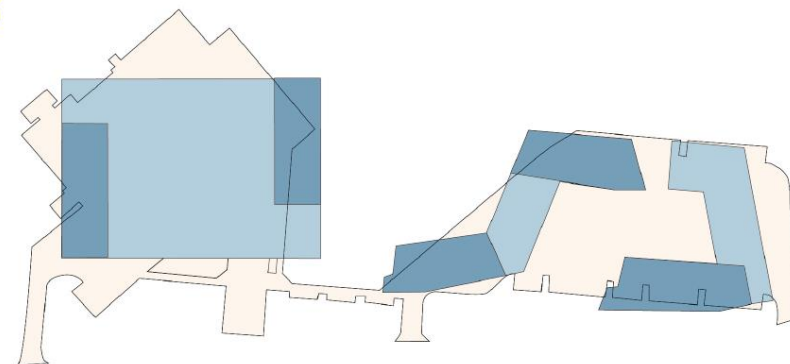
1



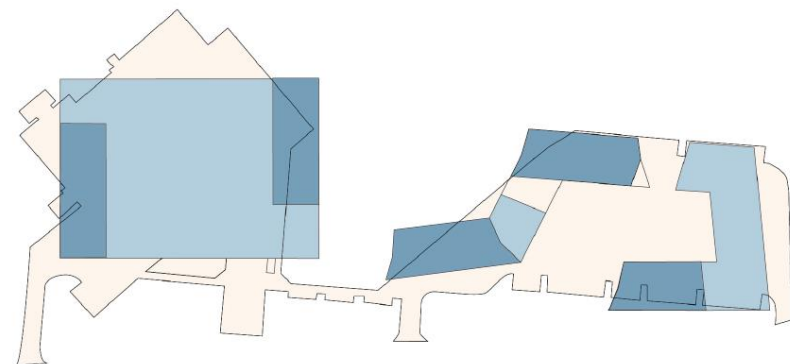
2

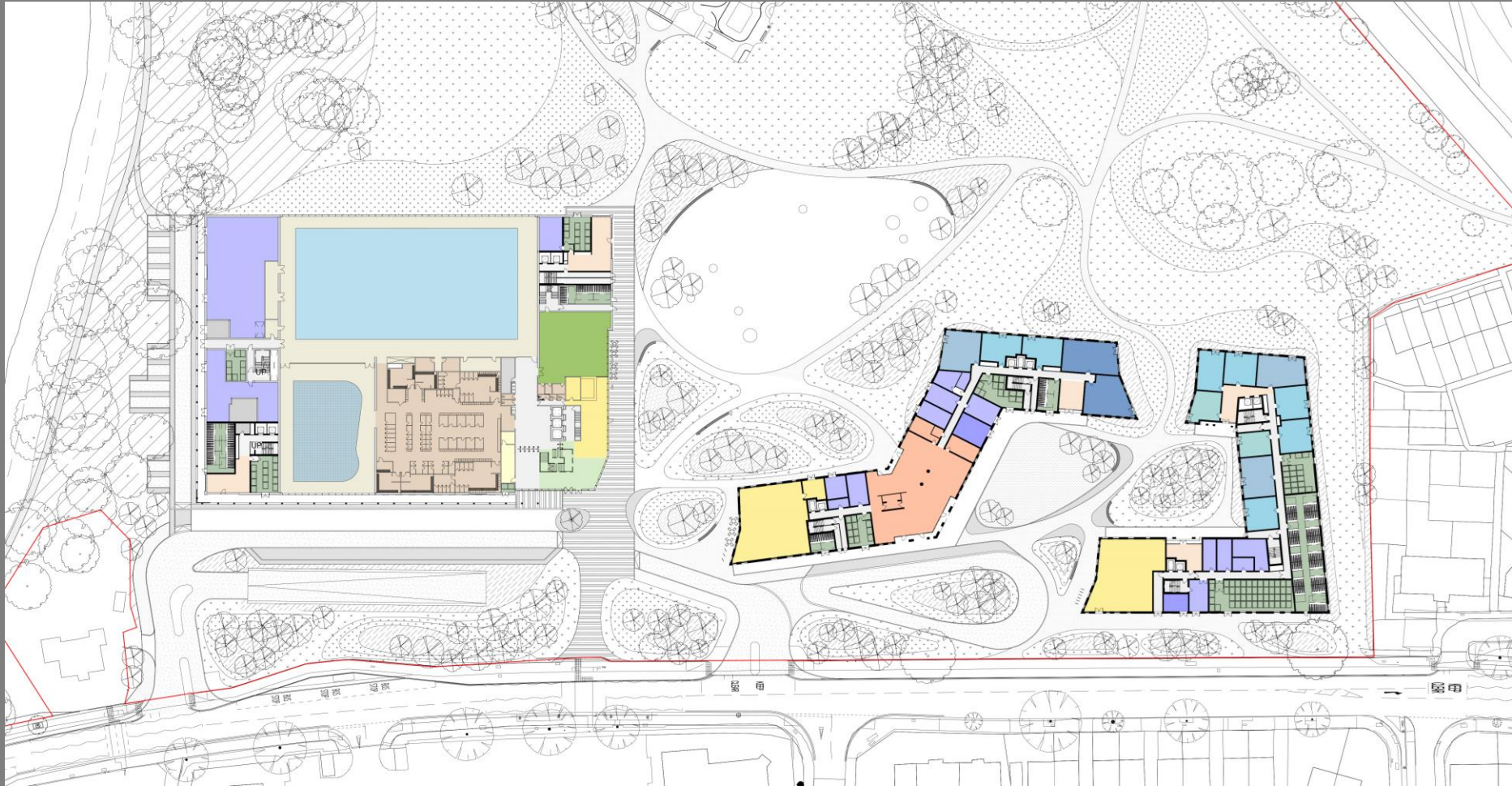


3



4





MOL comparison

Existing footprint 14,215m²



Proposed footprint 14,365m²











View looking east from the railway bridge



View looking west from Argyle Road

Leisure Centre

Existing leisure centre



Proposed leisure centre

- A 50m main pool, which has 10 lanes and is the equivalent to almost four 25m pools
- It is designed to national competition standards.
- Moveable floor and moveable booms, to enable the pool to be sub-divided and the floor raised to suit pre-school, school and other uses
- A fun pool specifically for children, with slides and water features.
- Sauna and steam rooms
- Double height reception and café facilities
- Children's indoor soft play area with party rooms
- Large 100+ station fitness gym and a further three large studios with sprung floors
- Wheelchair accessibility
- 175 leisure parking spaces, plus a drop off area and four coach parking bays

Proposed leisure centre





Park and outdoor facilities

Key:

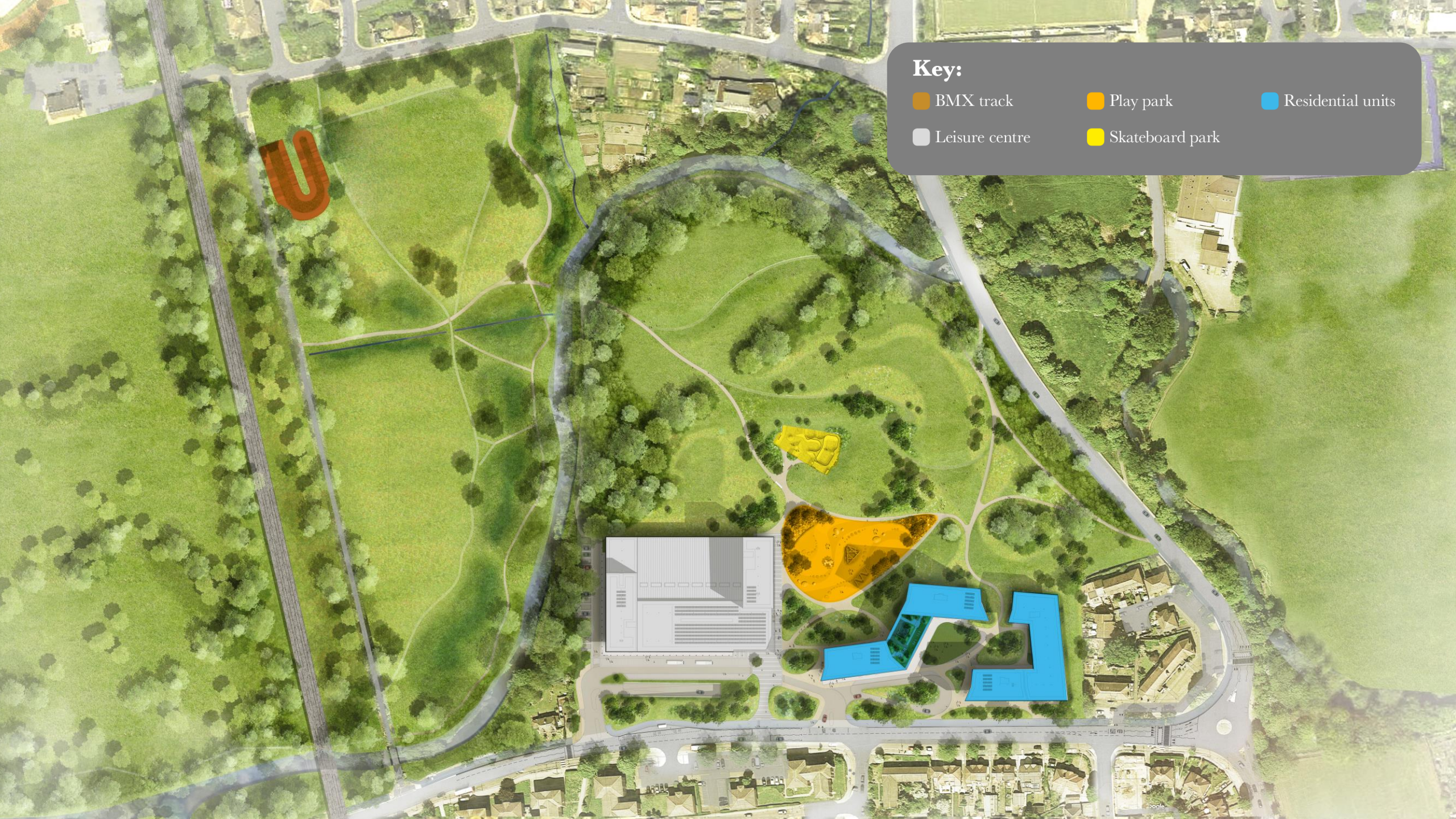
BMX track

Play park

Residential units

Leisure centre

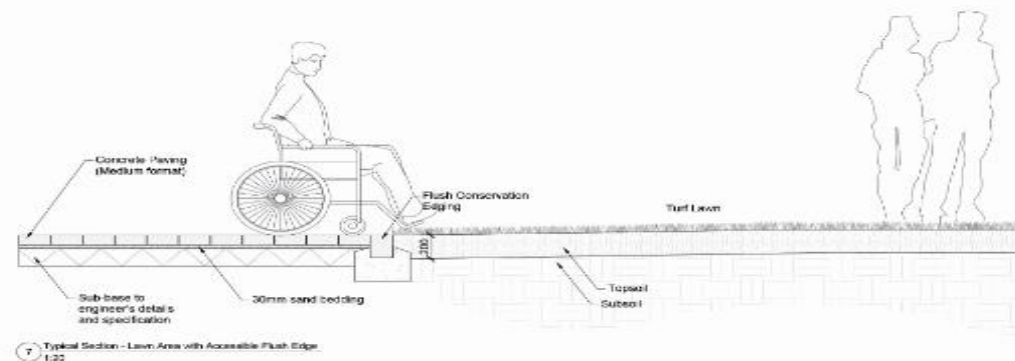
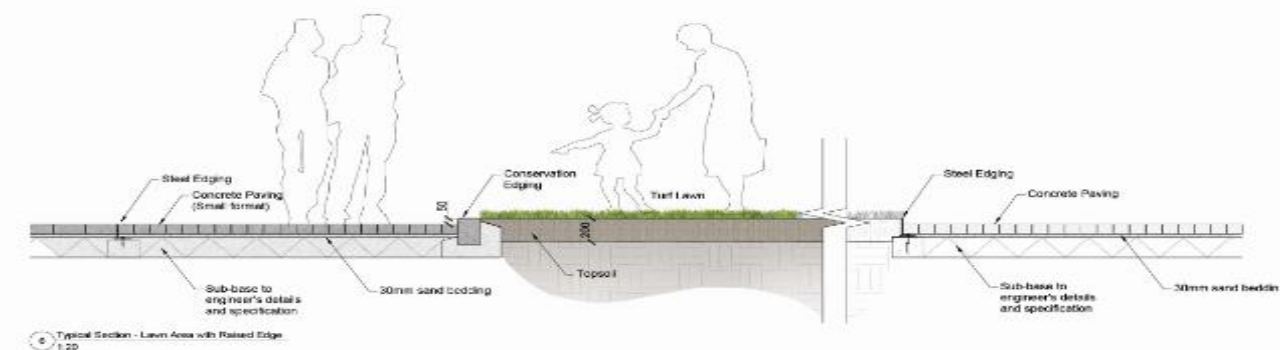
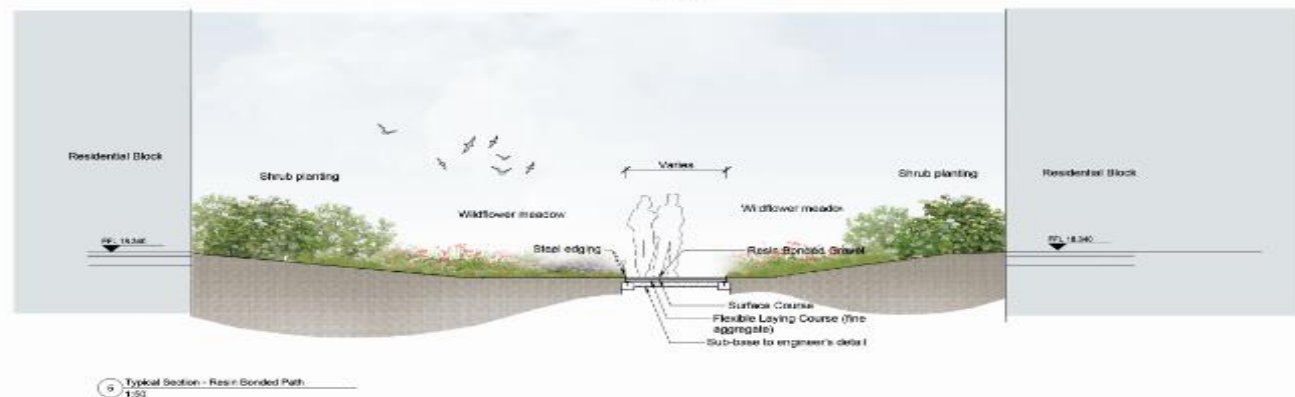
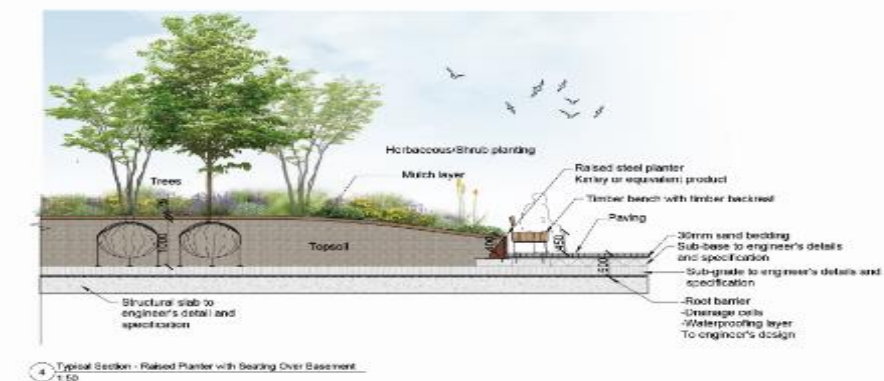
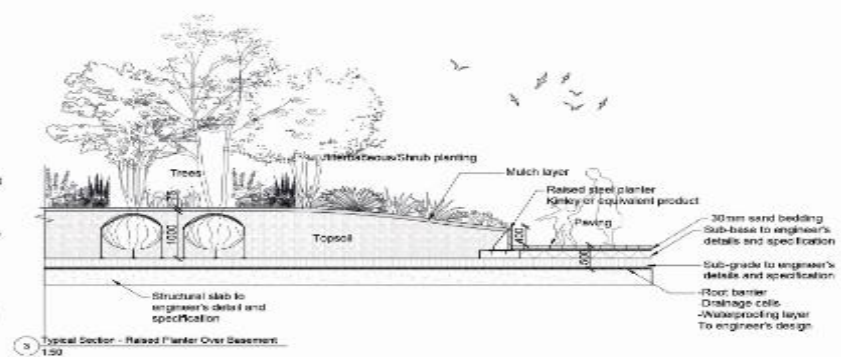
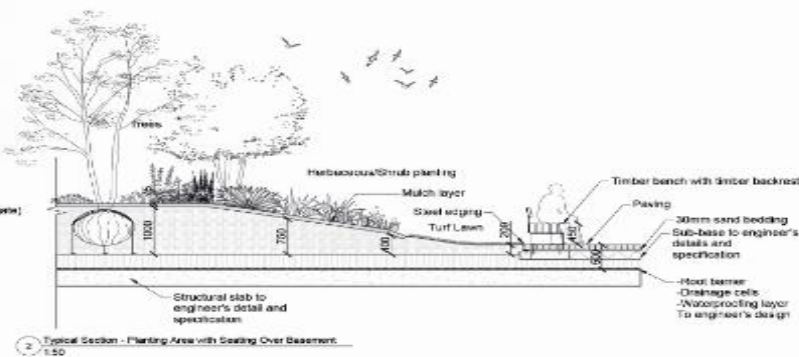
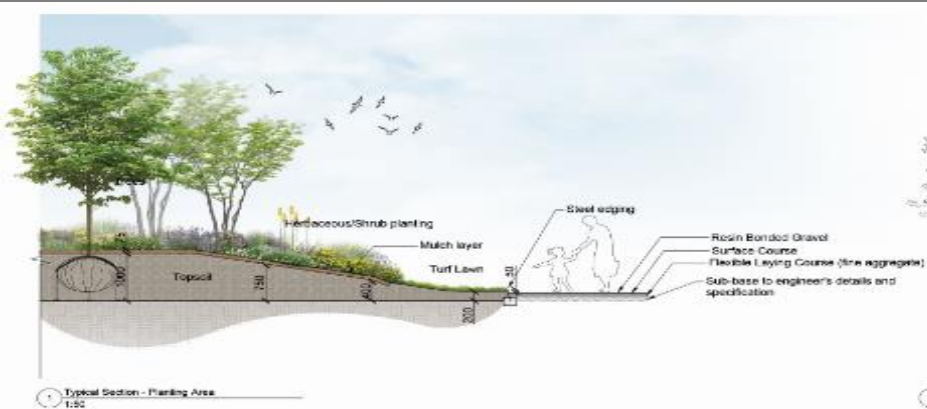
Skateboard park



Key:

- | | |
|--|---|
|  The new plaza |  Play park |
|  Courtyard garden |  Skateboard park |
|  Roof terrace |  River Brent pathway |









Residential

612 dwellings

56 x studios

277 x 1 bed

234 x 2 bed

45 x 3 bed

**35% affordable
housing by
habitable
room**

**Homes are
orientated
to maximise
views**

**All units exceed
minimum space
standards**

**Residents have access
to a communal
roof terrace and
residents' hub**





View of the the courtyard



Indicative image from another project



Indicative image from another project



Indicative image from another project



Indicative image from another project

EcoWorld

EcoWorld London in the community



Graffiti cleaning in
Canning Town



EcoWorld
Careers Day



EcoWorld London in the community



Barking Wharf Careers Fair

75 attendees and 8 jobs offered
Project will create over 100 new jobs and 15 apprenticeships for local people

Verdo-Kew Bridge

Planting day with Green Dragon Primary School
Careers Morning with Isleworth & Syon School



We would thank you for attending the Gurnell public exhibition and would welcome your feedback on the proposal.

There are many ways to provide feedback:



Fill out a feedback
form and leave it
with us



Email us: info@futureofgurnell.com



Write to: FREEPOST
MPC Consultation



Call our
Freephone
information line:
0800 148 8911