

SUSTAINABLE MODES OF TRAVEL TO SCHOOL STRATEGY

Travel to school programme report

September 2014 to July 2015

Contents

Introduction.....	1
Context.....	1
Key Successes.....	2
What the Numbers Say.....	3
Child Casualty Data Over Time.....	4
Progress against targets.....	5
2015/16 Targets.....	6
2015/16 Key Programmes of Work	
Walking.....	8
Cycling.....	9
STP Support & Highway Engineering.....	10
Road Safety.....	11
Alignment with other Strategic Strands.....	12

Ealing Council

Introduction

This interim report summarises the progress made by the London Borough of Ealing to increase safe, active and healthy travel to/from educational establishments. It sets out the targets for the forthcoming years and the associated challenges. It meets the duty under the Education and Inspections Act in relation to sustainable travel. For the purposes of the Act and this report, sustainable modes of travel are defined as...‘those that the Local Authority considers may improve the physical well-being of those using that mode (which would include health benefits derived from increased levels of physical activity), and/or the environmental well-being of all or part of their area (through, for example, reduced levels of congestion and pollution)’. Sustainable modes of travel include walking, cycling, public transport and smarter driving.

A more comprehensive review of the sustainable travel to school strategies will be outlined in the next edition of the SMOTS (autumn 2016) and this report is an interim document until then.

Context

There are 115 schools within the London Borough of Ealing with a school population of approximately 55,900 pupils [note based on 2014/15 school census and excludes some attending independent schools]. See Appendix A for a location map and list of schools.

In terms of population, recorded as 338,400 at the last census in 2011, Ealing is the third largest London borough; the ONS estimated 342,494 for mid-point 2013. The GLA estimates the 2017 population to be 347,800. In 2010 the birth rate increased 33% compared with 2002. During 2013/14 and 2014/15 there was a considerable school expansion programme to ensure places for primary school children. During 2015/16 the plans have been developed for increasing the number of places available at secondary (high) schools.

The 2014/15 National Child Measurement Programme recorded 37.8% of year 6 pupils were overweight (14.6%) or obese (23.2%). For reception pupils 20.9% were recorded as overweight or obese.

Based on 2014/15 figures, 63% of primary school children live within ½ mile of their school and a further 22% live within 1 mile. For high school students 53% live within 1 mile of their school and 37% live between 1 and 3 miles of the school. These figures suggest that active travel is suitable for the majority of Ealing pupils.

Sustainable travel to school helps meet the Ealing Corporate Objectives, the Local (Transport) Implementation Plan (LIP), the Ealing Health and Well-being Strategy and mitigate the impacts of the Education Plan. The impact of the programme can be cross referenced with Ealing’s Road Safety Plan and Cycling in Ealing report. The school travel programme is delivered in partnership with other council departments including Education, Highways, Planning, Public Health and Parking Enforcement.

The school travel programme is primarily funded via Transport for London (TfL) LIP grant, plus specific TfL funding streams such as Borough Cycling Programme, Sustrans Bike It project and ad hoc grants. In addition, when new schools or school expansions are approved, funding from the developer is secured to mitigate the highways impacts of the development. The funding is used to employ School Travel Advisors, deliver school travel behaviour change events and projects and road safety engineering. Year on year the work aims to reduce the number and length of journeys made to and from schools by car in order to reduce congestion, improve air quality and health and well being of the Ealing community.

The funding during 2014/2015 totalled £341,750 and was made up as follows:

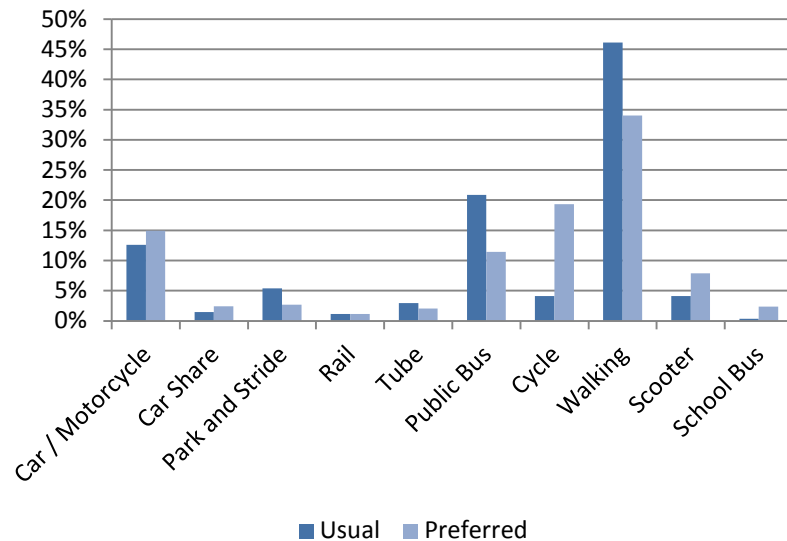
- TfL LIP £246,000
- TfL BCP £6,000
- Sustrans £34,000
- Education £8,800
- Other £46,950

Key Successes in Ealing during the 2014/2015 academic year

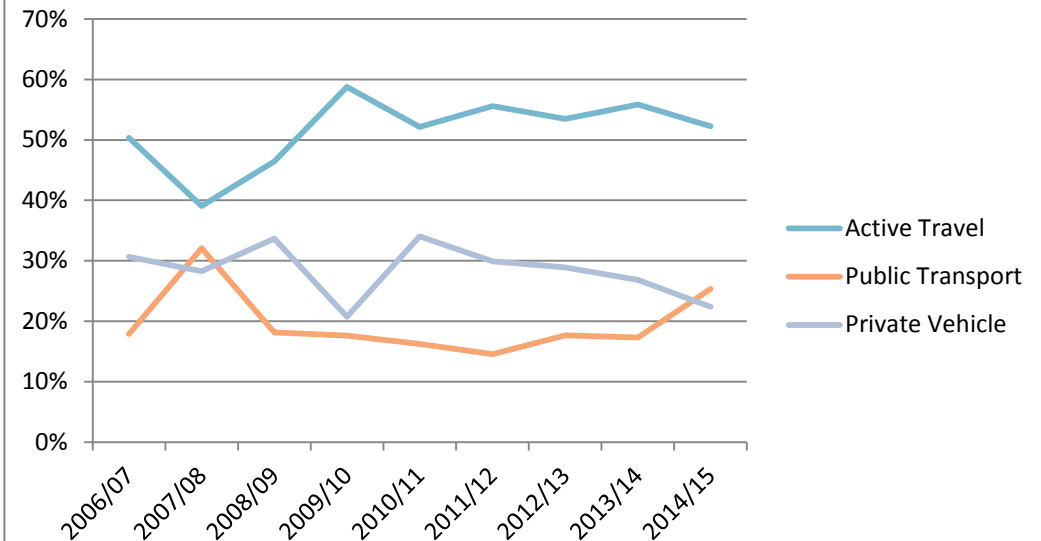
- ✓ **22.4% of trips made by staff and students to school are made by car - a five year low**
- ✓ **54% of primary school pupils walked or cycled regularly to school**
- ✓ **There were no child fatalities in 2014 due to road traffic incidents**
- ✓ **1004 pupils received Bikeability training**
- ✓ **The Ellen Wilkinson School for Girls achieved, STARS School of the Region Award 2015**
- ✓ **Teacher, Zac Newman was awarded STARS School Travel Champion of the Region, 2015**

What the Numbers Say: 2014/2015 data

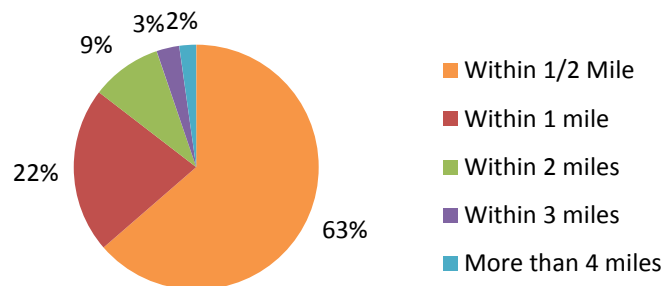
Student Mode of Travel



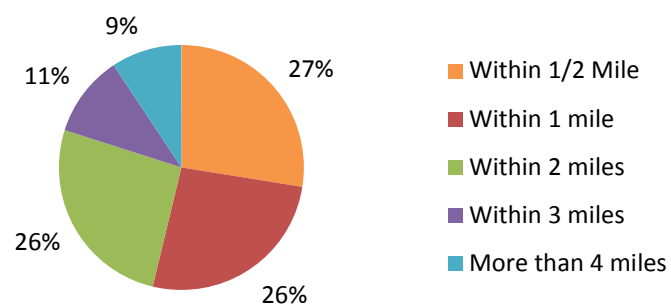
Usual Mode of Transport (%) For Staff and Pupils



Distance Primary Aged Children Live From School



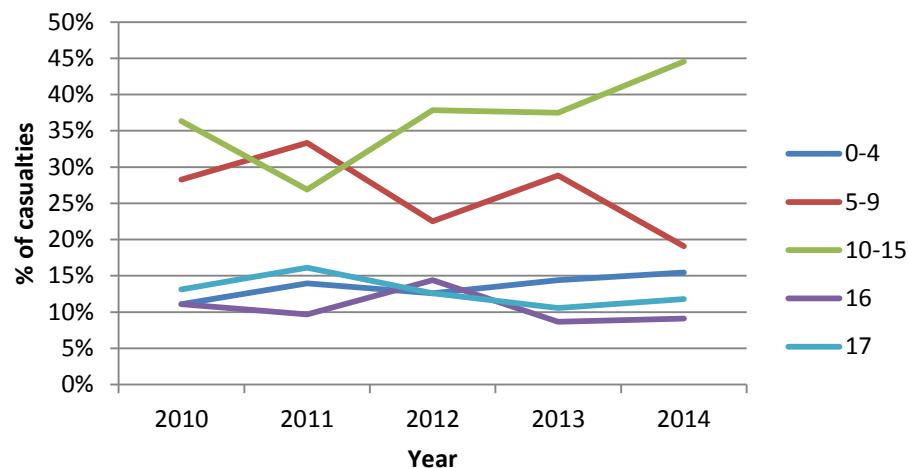
Distance Secondary Pupils Live from School



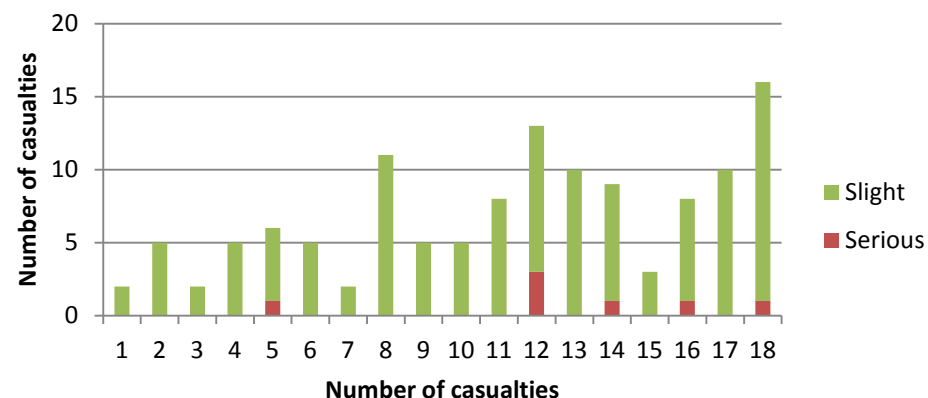
- Historic pattern shows that car use is in decline.
- Walking numbers have decreased at the same rate as the increase in scooting.
- An increase in cycling is reflective of the borough's cycling investment and combined with an increase in public transport use is reflective of wider catchment areas than previous years.

Child casualty data over time

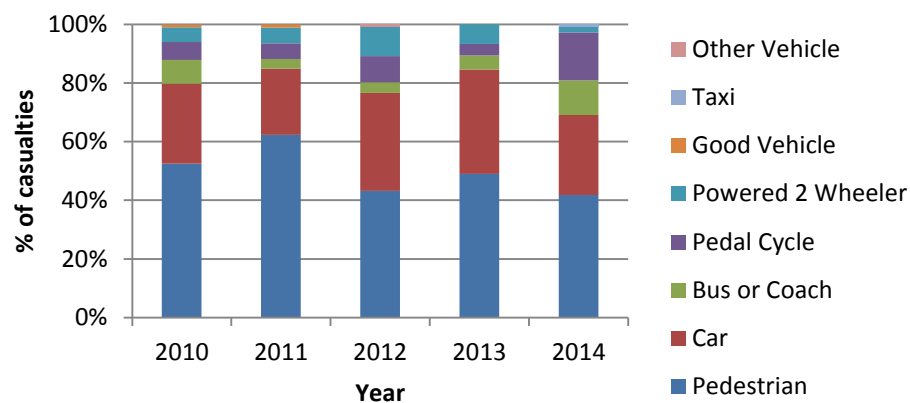
Child Casualties in Ealing by Age



Age of child casualties in 2013/14 academic year



Casualties aged 0-17 in Ealing by mode



- There were no Road Traffic Incidents (RTIs) resulting in a child fatality in Ealing in 2013/14
- In total in 2013/14 there were 7 serious injuries, which is the lowest number in 4 years.
- Child casualties are reducing in Ealing for all age groups except 10-15 year olds. Further examination of this cohort suggests year 7 and 8 students are most likely to be injured in an RTI.
- The casualties by mode graph has not been weighted. Although an increase in pedal cycle incidents is shown, there is a corresponding increase in the number of children cycling.

2013- 2015 Summary progress against targets

Academic Year	2013/14		2014/15		2015/16		2016/17	
KPI	Target	Actual	Target	Actual	Target	Actual	Target	Actual
No. schools with active travel plans	74/114 (62%)	71/114 (62%)	71/114 (62%)	44/115 (38%)	60/115 (52%)		74/115 (64%)	
Annual pupil % car mode share	16%	20%	15%	13%	12%		10%	
Annual pupil % walk & scoot mode share	48%	51%	50%	50%	52%		55%	
Annual pupil % cycle mode share	N/A	4%	4%	4%	5%		6%	
No. accredited School Travel Plans (STPs) See Appendix C	70	71	71	44	60		74	
Bronze	36	26	26	7	34		34	
Silver	26	29	30	21	10		20	
Gold	8	15	15	16	16		20	
No. school children that have completed cycle training	800	954	900	1004	1100		1100	

The reduction in 2014/15 of schools with active and accredited travel plans was due to high staff turnover in the STA team, resulting in fewer resources to support schools in preparing, finalising and submitting their plans onto STARS (TfL Sustainable Travel Accreditation System). In addition, the TfL STARS website was unavailable for a significant duration coinciding with the usual time of updating. This deterred some schools from submitting plans. Both these issues have now been resolved and it is expected that the number of accredited STPs will return to former levels over the next two years.

2015/16 Targets

Walking Target: 55% of primary pupils walking to school by 2017

Walking is the cheapest, most accessible form of transport and Ealing schools fall 6% short of the national target for primary school children. Encouraging families to walk to school has proven health benefits and therefore this will be a key aim for the coming year to promote walking to school.

Opportunities and barriers

In the borough 63% primary school pupils live within half a mile, which indicates that there is potential to raise the numbers regularly walking to school. Ealing schools are working to tackle high levels of childhood obesity and this provides an opportunity to work in partnership to increase activity levels of both children and their parents/carers.

Information contained in school travel plans indicate that the key reasons children are not walking are; travel onto work and distance away from the school. At high schools these reasons are exacerbated by students using public transport for just one or two stops. Safety is also a key reason and this may be related to the fear of crime. Ealing has a good network of footpaths and shared cycle routes and we will promote these routes for those within walking distance and park and stride for those with a longer journey.

Cycling Target: 6% of secondary school pupils cycling to school by 2017 3% increase in staff cycling to school by 2018

Surveys have indicated that 19% pupils would prefer to cycle to school. Ealing is a cycling borough and planning policy changes have increased the number of cycle parking spaces that should be part of a school, this is now 1:8 for staff members and 1:10 for pupils cycling to school.

Opportunities and barriers

The school travel plans indicate that low bike ownership, lack of opportunities or encouragement outside school mean that many children do not ride a bike. These factors impact directly onto the take up levels of Bikeability. In addition many of the bikes that children bring to the sessions are not in good working order and not road worthy. The challenge is therefore to increase the numbers of children who can ride a bike and to increase interest in cycle activities for sport and leisure where skills can be embedded.

High school take up of cycle events and cycle training is limited. This is due mainly to tight time constraints delivering the curriculum. Acton High School has identified low bike ownership as a key barrier in their school.

Car use Target: reduced to 10% by 2017

Dangerous and illegal driving behaviours around the school gate and local roads are a cause for concern for road safety. The level of congestion due to private vehicles on the school run contributes towards damaging air pollution. 85% of primary and 53% of high school pupils live within 1 mile of their school which is a reasonable walking and cycling distance. High school pupils receive free and subsidised travel on public transport. Therefore there is scope for further reductions in the number of journeys made by car.

Opportunities and barriers

The casualty figures for children and young people continue to decline overall. However, two groups remain disproportionate to the overall population. The young drivers and passengers aged 16-24 and child casualties for those aged 8 and in the age range 11-14.

Information contained in school travel plans and reports from schools indicates that poor driver behaviour outside schools is increasing and causing much concern for the safety of pupils and other pedestrians. By developing stronger links with the enforcement teams we plan to run a programme to educate drivers of the consequences of their actions. The Council's CCTV enforcement vehicle will be deployed to assist with this task, reflecting changes in enforcement law.

Encouraging parents / carers to choose the car less, particularly for short journeys, will support efforts on reducing air pollution (of which 50% is associated with road transport in London) and childhood obesity (impacting child development and increasing pressure on the NHS).

School Expansion

An increase in the numbers of pupils across the borough has increased demand on school places, resulting in the school expansion programme and development of new schools. This is now starting to impact on congestion, particularly around the schools gates. In September 2016 these expansions will begin to feed through to secondary schools and so the challenge will be to mitigate the travel impact.

Opportunities and barriers

STAs will work with developers and planners to secure funding and travel plan commitments to embed active travel behaviour from the outset and to fund delivery of highway safety and active travel engineering improvements.

There will also be a need to develop a programme addressing staff travel as a shortage of teachers and high cost of living in the borough attracts staff from further afield.

Key programme of work for 2015/16: **Walking**

Objectives

1. To engage schools with one new walking campaign
2. To investigate the feasibility of a community walking project
3. To expand the Starting School Programme from 4 to 25 schools
4. To work in collaboration with partners and schools to investigate deeper the factors that influence positive behaviour change

Activity	Target Audience	About	Success Measurement	Next Steps
Starting School Pilot (Sept –Nov)	New parents at 4 primary schools (360 families)	Each family to receive a map showing the local walking routes and an opportunity to plan their trips to school at school induction events. Reception classes to take part in a walk to school with Terri the Tiger.	Feedback from school Feedback from parents	Rolling out to 25 other schools for Sept 16. Improvements to walk to school promotion.
Walk to school Whatever the Weather competition Art competition in Oct	Primary Schools	Engagement with pupils to create art work (including poetry) to link walking with the curriculum.	Number of participants Quality of entries	Offer schools the Living Streets May 2016 walk to school scheme.
WOW – Walk Once a Week Campaign	Primary schools	The numbers of schools actively participating in this has reduced considerably overtime, with badges unused. The project has been revised to use the online Travel Tracker system instead so that the numbers can be monitored.	Quantitative data on the Travel Tracker report	Reviewing the cost benefits of running the scheme.
Youth Travel Ambassadors	Year seven students (aged 11-13)	Student led projects to encourage smarter travel. Acton High and Brentside High Schools to run campaigns to get more students walking rather than catching the bus for just one or two stops.	Hands Up survey results	Look for learning within the projects that can be scaled up.

Key programme of work for 2015/16: **Cycling**

Objectives

1. To increase the number of pupils who received bikeability training from 1004 to 1100
2. To empower school staff trained to engage pupils with cycling activities by training staff from 15 schools
3. To work in collaboration with TfL to run pilot projects

Activity	Target Audience	About	Success Measurement	Next Steps
Bikeability	Year 5 and 6 pupils	Part of a national scheme to offer cycle training to children. In year 6 pupils are most likely to have reached the motor skills required to cycle safely on the roads. By offering the training to year 5 pupils they are more likely to gain the basic skills (pedal and control) allowing them to progress to higher levels (i.e. 2 and 3) in year 6. This programme is intended to encourage cycling in later life.	Number of pupils trained. Level of training achieved.	Increase up take in primary schools and extend offer to high schools to encourage student cycling.
Bikeability Plus	Primary schools	Three pilot schemes to maintain children's interest in cycling post Bikeability training- bike mechanics club; bike bus; transition cycling to new high school.	Best practice, what were the unexpected barriers and outcomes	Review at pan London level.
Bike It Plus	One high school and five primary schools	Sustrans Bike It Officer will work intensively with Acton High and Christ the Saviour (Infant and Junior) Primary, Perivale Primary, Mayfield Primary and Berrymede Junior School. In addition the schools that were intensively supported last year will be supported	Number of events delivered Number of participants % of pupils preferring to cycle	Schools being selected for next year
Balance bikes	Early Years and Reception aged pupils	To provide school staff with the skills to get young children riding bikes through the use of play and games. Based on outcomes from the Biking Schools.	Number of teachers trained	Monitor how many children learn to ride bikes in summer term
Cycle grants	Pupils and staff at Castlebar Special School and Three Bridges Primary School	Castlebar will have four pool bikes (including electric bikes), to enable staff to cycle to other schools for outreach work and meetings within the borough. The bikes will also be available for staff to use for their commute on a try before you buy basis. Three Bridges will use the grant to providing cycle training and maintenance skills to their sports coach who will run bike clubs	Number of journeys made on the pool bikes. Certification of training and bike club sessions	Work with other schools to find opportunities for additional cycle projects.
Sportivate	Villiers High School	After school bike club, targeted at girls in particular. To get new or inexperienced students to take part in cycling.	Number of sessions completed	Research on going funding mechanism for after school cycling at high schools.
Youth Travel Ambassadors	High Schools (aged 11-13)	Student led projects to encourage smarter travel. Acton High School students to run campaign with a bike hire scheme.	Number of schools engaged	Encourage additional schools to participate and examine scope for roll out of student projects.

Key programme of work for 2015/16: **School Travel Plan Support and Highway Engineering**

Objectives

1. To increase active travel plans to 52%
2. To achieve increased take up in STARS from 44 to 60 schools
3. Introduce an agreed travel plan process for planning applications, reducing council spending.
4. To support TfL with developing improved version of STARS online.

Activity	Target Audience	About	Success Measurement	Next Steps
Support to expanding schools with their travel plan	Schools	Improved process to help schools with their travel plans at the inception stage of the expansion process. Encouraging the schools to take responsibility for the travel plan. Reducing the need for “off the shelf” travel plans produced by consultants.	Higher quality travel plan submissions. Plans submitted with planning applications Education reducing spend on consultants.	Move schools onto STARS to obtain silver or gold accreditation.
S106 / Education contributions	Highway improvements	Feasibility / handover works following on from planning approval. Ensuring school is kept informed and works are planned at convenient times (i.e. holidays)	Spend of contributions and capital / engineering improvements to locality of school site.	Review process to ensure smooth transition and timely implementation.
S106 contributions	Smarter travel behaviour	Ensure school is able to utilise funding for soft measures to reduce car use at the site.	Spend of contributions Increase or maintaining levels of active travel at the schools.	Review process to ensure smooth transition and timely implementation.
Training and Information sessions	School staff	Running a series of workshops and meetings to upskill school staff. Including, what a travel plan is, how to get a travel plan accredited, what makes successful behaviour change campaign, what might work at their school.	Number of participants in workshops. Number of meetings Number of accredited school travel plans.	Review success and learning outcomes of the training and prepare a schedule for 2016/17.
Revised support offer to schools	Schools	Introduction of universal offer to schools (see Appendix B) and smarter allocation of small grants to suit the schools' needs	Uptake of universal offer elements Implementation of grant funding.	Send out universal offer to schools in Summer term 2015/16.
Participate in TfL STARS steering group	STARS users	Supporting TfL to upgrade and redevelop the STARS online system. To improve the user experience and legibility of data captured.	Attendance at meetings Ease of use of new STARS website	Participating in consultation of accreditation criteria.

Key programme of work for 2015/16: Road Safety

Objectives

1. To pilot a follow up workshop for SDSA in two Ealing High Schools
2. To roll out the Safer Parking Promise in the spring and summer terms 2016
3. To develop closer links with enforcement colleagues in Parking and with the Metropolitan Police Safer Transport Team

Activity	Target Audience	About	Success Measurement	Next Steps
Road Safety outside schools	Drivers in the vicinity of schools at start and end of the school day	During Road Safety Week (23-27 th November 2015). Officers from the Metropolitan Safer Transport Team, Parking Services and LBOE will educate drivers on the need to obey the law and be considerate in their driving and parking.	Schools report a reduction in incidents. Parking contraventions down	Link in with the safer parking promise campaign. Make observations on site and review. Repeat twice a year and officers follow up at schools on an individual basis.
Safer parking promise	Parents and carers	Parents/carers sign up to behaving responsibly when driving and parking around the school and receive a car sticker.	Number of schools participating Number of drivers participating	Roll out to twenty schools
Pedestrian skills	Pupils in year 3 (aged 7/8)	Children are trained in groups of 5 in the immediate vicinity of their school. Training includes how to select a crossing point, how to cross the road safely and appropriate behaviour when walking	Number of children trained	Increase awareness of schools of offer and tie in to national or London road safety schemes / resources.
Go Your Own Way Show (Amelix)	Year seven students (aged 11-13)	A lively interactive show aimed at getting walk, cycle, road safety messages across to key stage 3 students. Using the medium of song, dance and competitions.	Number of pupils attending the session Pupil and staff feedback.	To hone the messaging to focus on road safety, extend the offer to additional schools.
Safe Drive Stay Alive Event	Students Aged 16-19	Aimed at reducing car / motor bike incidents and casualties among this age group, whether driver or passenger. Theatre production, performances held twice daily. Run in collaboration with Hounslow Council, Emergency services and TFL	Number of pupils attending the sessions Pupil and staff feedback.	To increase participation. To pilot a follow up programme.

How School Travel Programme aligns with other Strategic Strands

	Walking	Cycling	School Travel Plans	Engineering	Road safety
Corporate objectives	✓	✓	✓	✓	✓
SMOTS	✓	✓	✓	✓	✓
LIP	✓	✓	✓	✓	✓
Cycle strategy		✓	✓	✓	✓
Health and Wellbeing	✓	✓	✓		
Road Safety Plan	✓	✓	✓	✓	✓
Obesity Strategy	✓	✓			
Education Services	✓	✓	✓	✓	✓
School Expansion Programme			✓	✓	
Air quality	✓	✓	✓		
Parking			✓	✓	✓
School curriculum	✓	✓	✓		
Play strategy	✓	✓	✓		
Healthy schools programme	✓	✓	✓		
Leisure and parks	✓	✓			
Emergency services					✓

Appendix A: Map of Ealing Schools

Primary Schools

- Academy
- Community
- Foundation
- Voluntary Aided

- 1 Alec Reed Academy (Primary)
- 2 Allenby Primary School
- 3 Ark Priory Primary Academy
- 4 Beaconsfield Primary and Nursery School
- 5 Barnymede Infant School +
- 6 Barnymede Junior School
- 7 Blair Peach Primary School
- 8 Brentside Primary School
- 9 Christ the Saviour CE Primary School (Infant)
- 10 Christ the Saviour CE Primary School (Junior)
- 11 Clifton Primary School
- 12 Colston Primary School
- 13 Dairy Meadow Primary School
- 14 Deventwater Primary School
- 15 Dormers Wells Infant School
- 16 Dormers Wells Junior School
- 17 Doane Manor Primary School
- 18 Drayton Green Primary School
- 19 Durdans Park Primary School
- 20 East Acton Primary School
- 21 Featherstone Primary School
- 22 Fielding Primary School
- 23 Gifford Primary School
- 24 Grange Primary School
- 25 Greenwood Primary School
- 26 Hambrook Primary School
- 27 Hatheway Primary School
- 28 Havestock Primary School
- 29 Hobbayne Primary School
- 30 Holy Family Catholic Primary School
- 31 Horsendes Primary School
- 32 John Perry's Primary School
- 33 Khalsa Primary School
- 34 Lady Margaret Primary School
- 35 Little Fables Primary School
- 36 Mayfield Primary School
- 37 Montpelier Primary School
- 38 Mount Carmel Catholic Primary School
- 39 North Ealing Primary School
- 40 North Primary School
- 41 Oaklands Primary School
- 42 Oldfield Primary School
- 43 Our Lady Of The Visitation Catholic Primary School
- 44 Perivale Primary School
- 45 Peckham Hill Primary School
- 46 Ravenor Primary School
- 47 Salborne Primary School
- 48 Southfield Primary School
- 49 St Anselm's Catholic Primary School
- 50 St George's Catholic Primary School
- 51 St John's Primary School
- 52 St Joseph's Catholic Primary School
- 53 St Mark's Primary School
- 54 St Raphael's Catholic Primary School
- 55 St Vincent's Catholic Primary School
- 56 St John Fisher Catholic Primary School
- 57 Stanhope Primary School
- 58 The Edward Behnam CE Primary School
- 59 Three Bridges Primary School

- 60 Tudor Primary School
- 61 Vicar's Green Primary School
- 62 Viking Primary School
- 63 West Acton Primary School
- 64 West Trehurst Primary School
- 65 Willow Tree Primary School
- 66 Wolf Fields Primary School
- 67 Wood End Academy
- 68 Wood End Infant School
- 69 Ark Dymon Primary Academy ★
- 70 St Mary's C of E Primary School

Secondary Schools

- ◆ Academy
- ◆ Community
- ◆ Foundation
- ◆ Voluntary Aided

- 71 Acton High School
- 72 Brentside High School
- 73 Dormers Wells High School
- 74 Drayton Manor High School Academy Trust
- 75 Elthorne Park High School
- 76 Featherstone High School Academy
- 77 Greenford High School
- 78 Northolt High School
- 79 The Cardinal Wiseman Catholic School
- 80 The Ellen Wilkinson School For Girls
- 81 Twyford CE High School Academy
- 82 Villiers High School
- 83 Alec Reed Academy (High)
- 84 William Parkin CE High School
- 85 Ealing Fields High School ★

Special Schools

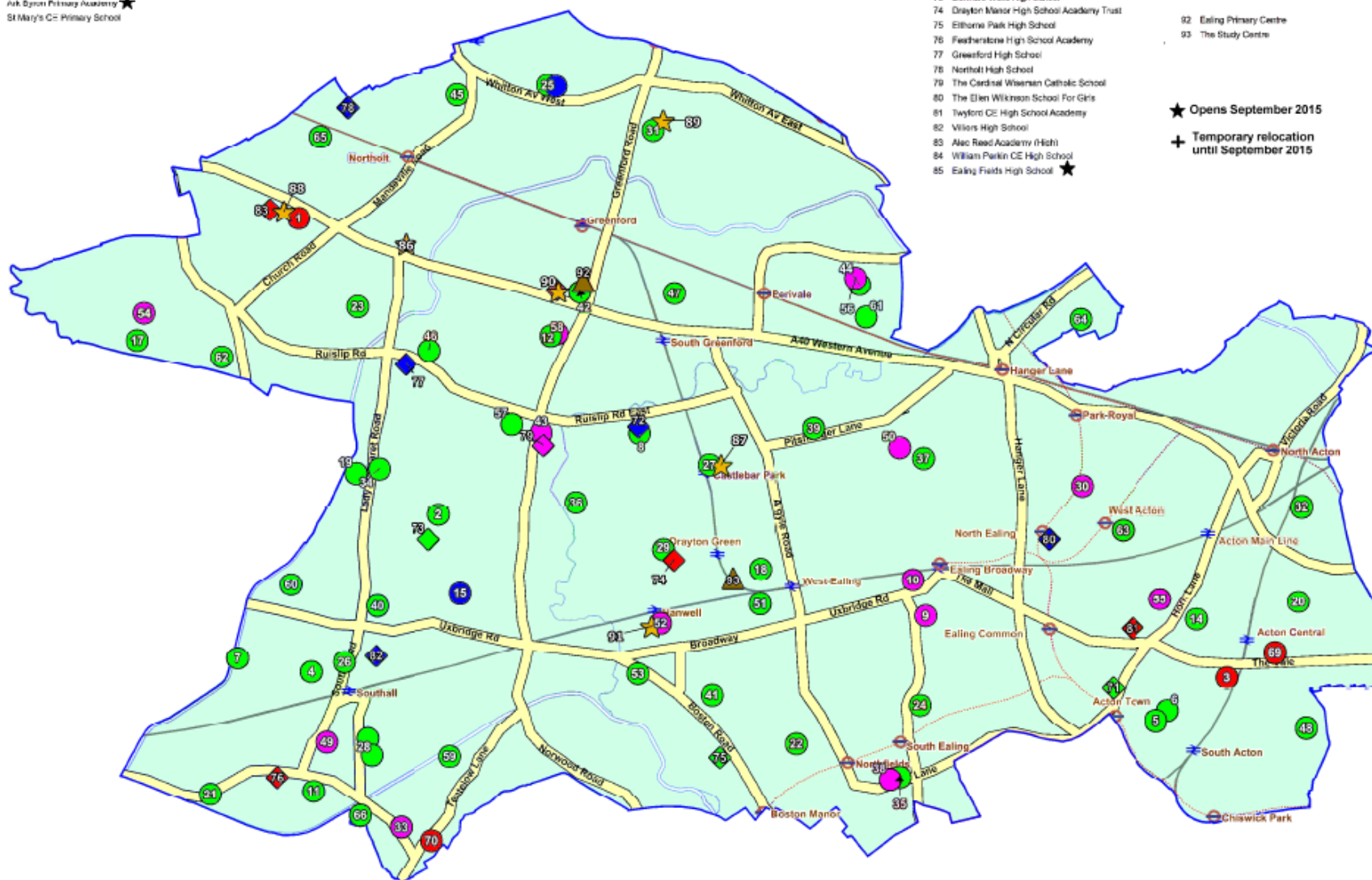
- 86 Balvise School
- 87 Castlebar School
- 88 John Chilton School
- 89 Mandeville School
- 90 Springhallow School +
- 91 St Ann's School

Study Centres

- 92 Ealing Primary Centre
- 93 The Study Centre

★ Opens September 2015

+ Temporary relocation until September 2015



General offer and conditions for all HIGH schools

- Schools without a travel plan can still apply but should meet with the adviser to set one up.
- All schools will be expected to complete the annual 'how you travel to school' student and staff survey

Scheme	Focus	cost		Tick if interested	School contact details if different to above
Review the travel plan	STP	Free	Meet with your travel plan adviser and discuss travel issues affecting your school		
Safe Drive Stay Alive for all Year 12 students (October)	Road Safety	Free	Aimed to reduce road casualties in the high risk group, ages 17-24. Target audience is all Year 12 students, half day in w/c 5 th October, spaces available, please email telkmank@ealing.gov.uk by 10 th Sept		
Go Your Own Way Theatre in Education (Nov)	Road Safety	Free	Music & dance road show featuring young people from the entertainment industry. Aimed at years 7/8/9 to promote safer walking/cycling, focuses on distractions w/c 23 rd November (reserve Jan) From Amelix Youth Projects		
The Big Pedal (March)	Cycling	Free	Cycle to school challenge for all schools in UK. Sign up and log the journeys on-line (& bike shed counts) and enter the chance to win an Ealing Prize for the school		
Free Your Feet	Walking	TBC	New walking scheme from Living Streets for High Schools to be launched in the Spring, please indicate if interested in further details when available		
Ealing Walking Week	Walking	Free	Please indicate if interested in further details when available		
STAR System	STP	Free	Go to www.tfl.gov.uk/stars to sign up to your school's on-line travel plan. Please indicate if you would like further assistance with using the system.		
STAR workshops	STP	Free	Workshops will be held throughout the year to help you get the most out of STARs and apply for Accreditation. Dates to follow.		

Targeted Projects, Specialist Support and Pilots – please indicate if you wish to be considered, unfortunately there is currently limited availability.

- Schools must have an active travel plan to participate in these projects
- All schools will be expected to complete a before and after ‘how you travel to school’ student survey

Scheme	Focus	Cost	Details	Tick if interested	Contact details if different to the above
Youth Travel Ambassadors (YTA)	STP	Free but Requires Support from member of teaching staff	Limited number of schools Student led ‘peer to peer’ projects to promote active travel, bus behaviour or road safety. Short (single term, 3 sessions) or full programme (8 sessions over the year), supported by an external specialist adviser		
Biking Schools	Cycling	Can be augmented By school	Cycle training and activities integrated into the curriculum and enrichment activities, such as after school clubs Dependant on awaited confirmation of funding bids.		
Cycle training, transition project	Cycling	Free	Pilot to deliver route planning and practice cycle rides to new school. Likely to be in summer term.		
Cycle Training years (all year)	Road Safety	Free	Bikeability Level three, can be delivered in or out of school hours in small groups. Particularly keen to deliver to students in upper school		

General offer and conditions for all PRIMARY schools

Focus & Requirements – The School Travel Plan				
<ul style="list-style-type: none"> These are available to all schools Schools without a travel plan can still apply but should meet with the adviser to set one up. All schools will be expected to complete the annual 'how you travel to school' student and staff survey 				
Scheme	Cost to school	Details	Tick if interested	Further details & school contact if different to above
Review the travel plan	Free	Meet with your travel plan adviser and discuss travel issues affecting your school		
STAR System	Free	Go to www.tfl.gov.uk/stars to sign up to your school's on-line travel plan. Please indicate if you would like further assistance with using the system.		
STAR workshops	Free	Workshops will be held throughout the year to help you get the most out of STARs and apply for Accreditation. Dates to follow.		
Junior Travel Ambassadors/ Road safety officers	Free	Please indicate how many JTA badges /kits you would like (maximum 20 per school) Resources available on the STARs system		

Focus & Requirements – Road Safety				
<ul style="list-style-type: none"> Available to all schools Schools without a travel plan can still apply but should meet with the adviser to set one up. All schools will be expected to complete the annual 'how you travel to school' student and staff survey 				
Scheme	Cost to school	Details	Tick if interested	Further details & school contact if different to above
Pedestrian skills training for YEAR 3 pupils	Free	Aimed to reduce road casualties. Roadside training in small groups, children learn how to cross the road safely. Delivered over one/two days by For 2 Feet on behalf of Ealing Council. Available throughout the year		
Road Safety & Pedestrian skills delivered by school staff	*	Looking for two schools to trial a scheme to train school staff to deliver roadside pedestrian skills education to pupils. Likely to run in the summer term *Free but requires support from teaching staff		
Cycle training for years 5 or 6	Free	Bikeability training levels 1 and 2 delivered by CTUK on behalf of Ealing Council throughout the year. CTUK will also contact school direct Please ignore if you have already confirmed your sessions.		
Parking Pledge	Free	Aimed to engage parents who park or drop off inconsiderately, this parking pledge includes a code of conduct and a car sticker. More details to follow.		

Focus & Requirements – Cycling

- Schools must have an active travel plan to participate in these projects
- All schools will be expected to complete the annual 'how you travel to school' student and staff survey
- For pilot projects schools may be asked to complete additional surveys

Scheme	Cost to school	Details	Tick if interested	Further details, contact if different to the above
The Big Pedal (18-29th April)	Free	Cycle to school challenge for all schools in UK. Sign up and log the journeys on-line (& bike shed counts) and enter the chance to win an Ealing Prize for the school		
Balance biking staff training	Free (staff time required)	Opportunity for staff to learn how to deliver balance bike skill sessions. Requires 2x45 minute day slots & x45minute after school slots on consecutive days. Dates and venue tbc		
Cycle Shelter Grants	Free	TfL grant process for pupil cycle shelters is now open until 31 st December. STARS Accreditation required.		
Year 4, Level 1 Cycle Training	Free	Bikeability level 1 training for Year 4 pupils, delivered by CTUK. Schools must also offer level 1 and 2 to years 5 and /or 6.		
School bike bus	Free	CTUK will work with your school to identify suitable pupils and routes for a led ride to school. This will be an add on to cycle training.		

Focus & Requirements – Walking

- Schools must have an active travel plan to participate in these projects
- All schools will be expected to complete the annual 'how you travel to school' student and staff survey
- For pilot projects schools may be asked to complete additional surveys

Scheme	Cost	Details	Tick if interested	Further details, contact if different to the above
Walk to School	Free	Walk to School – Whatever the Weather October Pupil competition to win vouchers and weather resources for the school. See flyer for more information.		
Terri the Tiger (Infants)	Free	Terri the Tiger mascot costume (to be worn by member of school staff) and walk to school resources. Please indicate date of preferred week (subject to demand) and number of classes taking part in Terri's walk to school		
Walk Once a Week WOW	Free	This year's theme is My Healthy Planet. Up to three topic sets of WOW badges (one per term). All schools taking part must use the on-line tracker software. Further badge sets can be paid for by the school, www.Livingstreets.org.uk or see attached flyer for more details		

In the 2015/16 academic year each school can apply for a grant of up to **£500** for your school. There is a total of £20,000 available for schools to support travel plan initiatives or activities. **Closing date for the applications is 31st October 2015**

The funding will be allocated on a first come first served basis, where the conditions and criteria are met.

Grants can be up to **£500.00** per school per year and must be used to support travel plan initiatives or to change travel behaviour towards more safe, active and environmentally friendly journeys.

The grants must be used to fulfil the following criteria:

1. Promote at least one aspect of safer and smarter travel choices (walking, cycling, scooting, safer/ greener driving, public transport, road safety)
2. To reduce congestion in the vicinity of the school

Conditions of the grant:

1. **An annual hands up survey of staff and students must be entered on the STARS online system**
2. Evaluation information on the success of the grant to be submitted to LBE by 30 June 2016
3. The decision from the School Travel team is final.
4. Where possible LBE will source the required materials or services on behalf of the school in liaison with the grant applicant. Where this is not possible arrangements can be made with the STAs.
5. Applications where the expense has already occurred will not be eligible
6. Funding will only be for the 2015/16 **financial year** and is based on available funding
7. This funding is based on the 2015/16 budget and may not be available in future years.
8. Applications with matched (including in kind) funding will be favoured.

Examples for grant (but not limited to):

- Pool bikes for students
- Frog bikes
- Balance bikes
- Pool bikes for staff
- Lockers
- Supply cover to allow staff training or workshop attendance
- Pupil led projects
- Prizes or vouchers specifically relating to behaviour change
- Staff promotions
- Joffrey Bear
- Stickers (e.g. Walk in all weathers)

Appendix C: STARS Accredited Schools

School Name	2014/15 STARS Accreditation Level
Christ the Saviour CE Primary School	Gold
Drayton Green Primary School	Gold
Hambrough Primary School	Gold
North Ealing Primary School	Gold
Oaklands Primary School	Gold
Our Lady of The Visitation Roman Catholic Primary School	Gold
Perivale Primary School	Gold
Saint Joseph Roman Catholic Primary School	Gold
Saint Raphael Roman Catholic Primary School	Gold
Saint Vincent Roman Catholic Primary School	Gold
St Benedict's School	Gold
St Gregory's Roman Catholic Primary School	Gold
The Ellen Wilkinson School for Girls	Gold
Vicar's Green Primary School	Gold
Wood End Academy	Gold
Wood End Infant School	Gold
Avenue House School	Silver
Belvue High School	Silver
Berrymede Infant School	Silver
Blair Peach Primary School	Silver
Brentside High School	Silver
Castlebar School	Silver
Derwentwater Primary School	Silver
Dormers Wells Infant School	Silver
Dormers Wells Junior School	Silver
Downe Manor Primary School	Silver
East Acton Primary School	Silver
Fielding Primary School	Silver
Gifford Primary School	Silver
Greenfields Children's Centre	Silver
Hobbayne Primary School	Silver
King Fahad Academy	Silver
Mayfield Primary School	Silver
Montpelier Primary School	Silver
Selborne Primary School	Silver
Southfield Primary School	Silver
Viking Primary School	Silver
Acorn Independent College	Bronze
Acton High School	Bronze
Clifton Primary School	Bronze
Drayton Manor High School	Bronze
Elthorne Park High School	Bronze
Oldfield Primary School	Bronze
Orchard House School	Bronze

Version Control

Version	Date	Author(s)	Revision Notes
1	03/08/2015	Katie Telkman	First draft
1.2	19/08/2015	Katie Telkman Katie Stickland	Reduce size of document using plain English
2	03/11/2015	Katie Telkman	Inclusion of 2015/16 programme
2.2	09/02/2016	Katie Telkman	Review data included
3	26/02/2016	Katie Stickland	Formatting and appendix

	NAME	TITLE	SIGNATURE	DATE
Author	Katie Telkman	Senior School Travel Advisor		
Reviewer	Tim Melhuish	Manager - Transport Projects & Policy Team		
Authoriser				