

# Pitzhanger Manor and Walpole Park

Walpole Park update  
Public meeting  
07\_01\_2012





# Landscape plan

## Landscape proposals

- Resurfaced tar & chip pathways
- Brick paving
- Existing tree
- New tree
- Regency shrub planting
- Improved boundary planting
- Mown grass
- Grass with alternative maintenance regime
- Bulb planting
- Seating

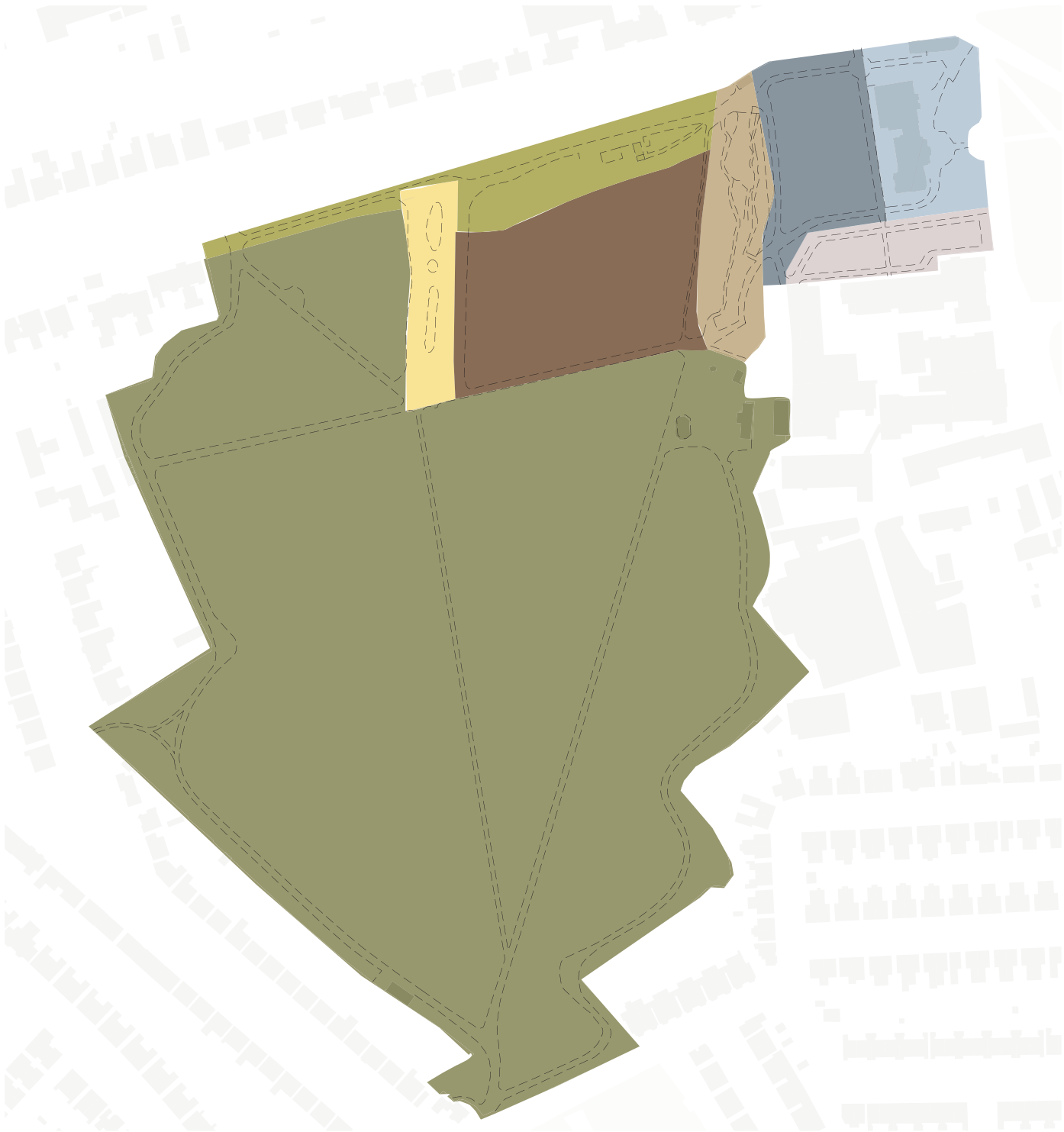
- 1. Listed Pitzhanger Manor
- 2. Listed lodge
- 3. Listed entrance archway
- 4. Existing gallery
- 5. New cafe
- 6. Outdoor cafe seating
- 7. Flower garden with wall plants, and Charles Jones & Windrush memorials
- 8. Listed Portland stone bench
- 9. Listed boundary wall
- 10. Existing low wall
- 11. New low walls
- 12. Reinstated drive
- 13. Great War memorial
- 14. Restricted access
- 15. Entrance reopened
- 16. Kitchen garden with fruit, vegetable and flowers, incl. roses, for community use

- 17. Dipping pond: relocated ornamental / wishing well
- 18. Pergola repaired and planting enhanced
- 19. Wildlife wall
- 20. Reinstated circular lawn graded towards water
- 21. Water garden with marginal planting
- 22. Listed rustic bridge
- 23. Timber bridge
- 24. Reinterpreted shrubbery walk
- 25. Fishpond
- 26. Woodland area with understorey planting
- 27. New path
- 28. Widened path
- 29. Kiosk and toilets integrated with proposed learning centre
- 30. Relocated playground
- 31. Existing shelter
- 32. Relocated Princess Diana memorial tree



Park character areas

- Forecourt
- Lawn and Flower Garden
- Walled Garden
- Water Garden
- Inner Park
- Fishpond
- Shrubbery Walk
- Wider Parkland





Landscape plan - Forecourt





## Landscape references - Forecourt



Regency planting beds



Old postcard with the entrance drive with the old cedar tree in the background



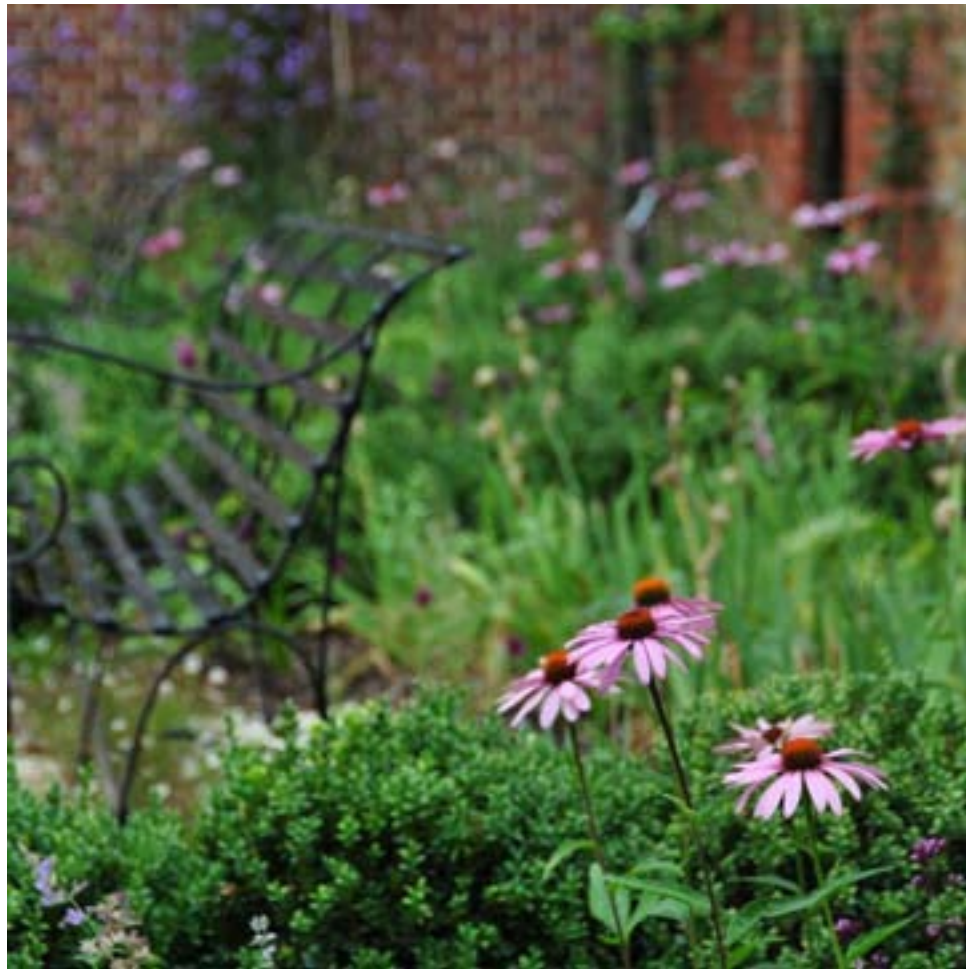


Landscape plan - Lawn and flower garden





## Landscape references - Lawn and flower garden



Perennial border



Lawn - Old postcard, circa 1910





## Landscape plan - Walled garden





Landscape references - Walled garden



Community gardens



Wall fruit



Vegetable and flower plots





Landscape plan - Water garden





Landscape references - Water garden



Marginal planting



Timber bridge

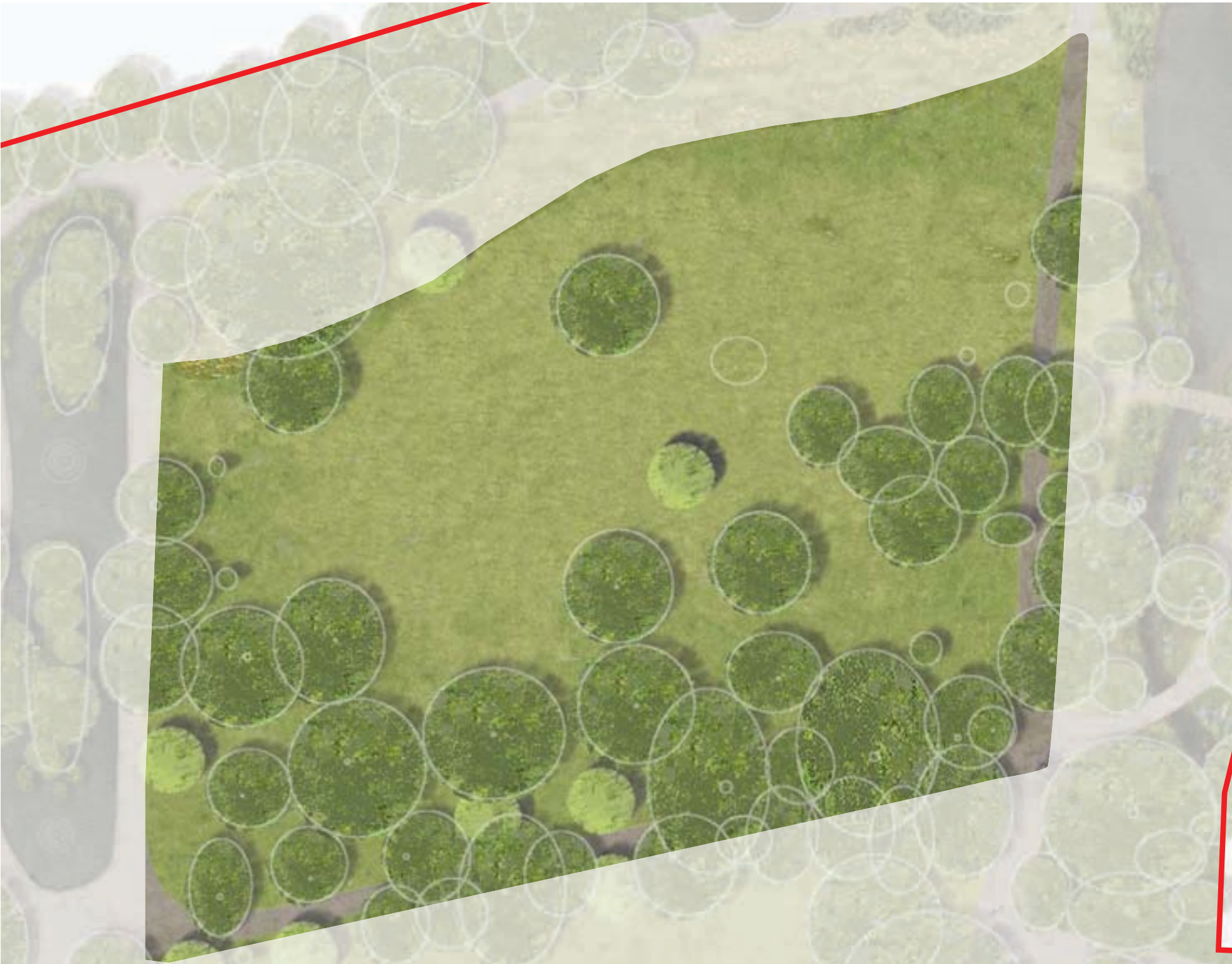


Marginal planting





Landscape plan - Inner park





## Landscape references - Inner park



Informal viewpoint



Specimen parkland trees, 1901





Landscape plan - Fishpond





## Landscape references - Fishpond



Boating



The fishpond - Old postcard, early 20th century





Landscape plan - Shrubbery walk





## Landscape references - Shrubbery walk



Brighton Pavillion



The shrubbery walk - Old postcard, 1905





Landscape plan - Wider parkland





Landscape references - Wider parkland



Alternative grass management



Bulb planting drifts



Picnic





## Landscape references - Wider parkland



Birdbox



Bluebells



Long grass regime





## Key dates

Winter 2012	Public meeting to give project update and present plans for learning and park facilities
Winter / spring 2012	Planning application submitted
Spring 2012	Stage E completion
Summer 2012	Tender
Autumn 2012	Works start on site



# Pitzhanger Manor

## Heritage Grant

Resubmitted on 19th December 2011

Round one decision in April 2012

- restore Pitzhanger Manor
- reinstate the conservatory
- improve the gallery
- provide new cafe and visitor facilities
- create an accessible high quality visitor experience with an exciting programme of learning and activities





Rick Yard existing plan before demolition of former animal centre



Fence - now demolished



Fence - now demolished

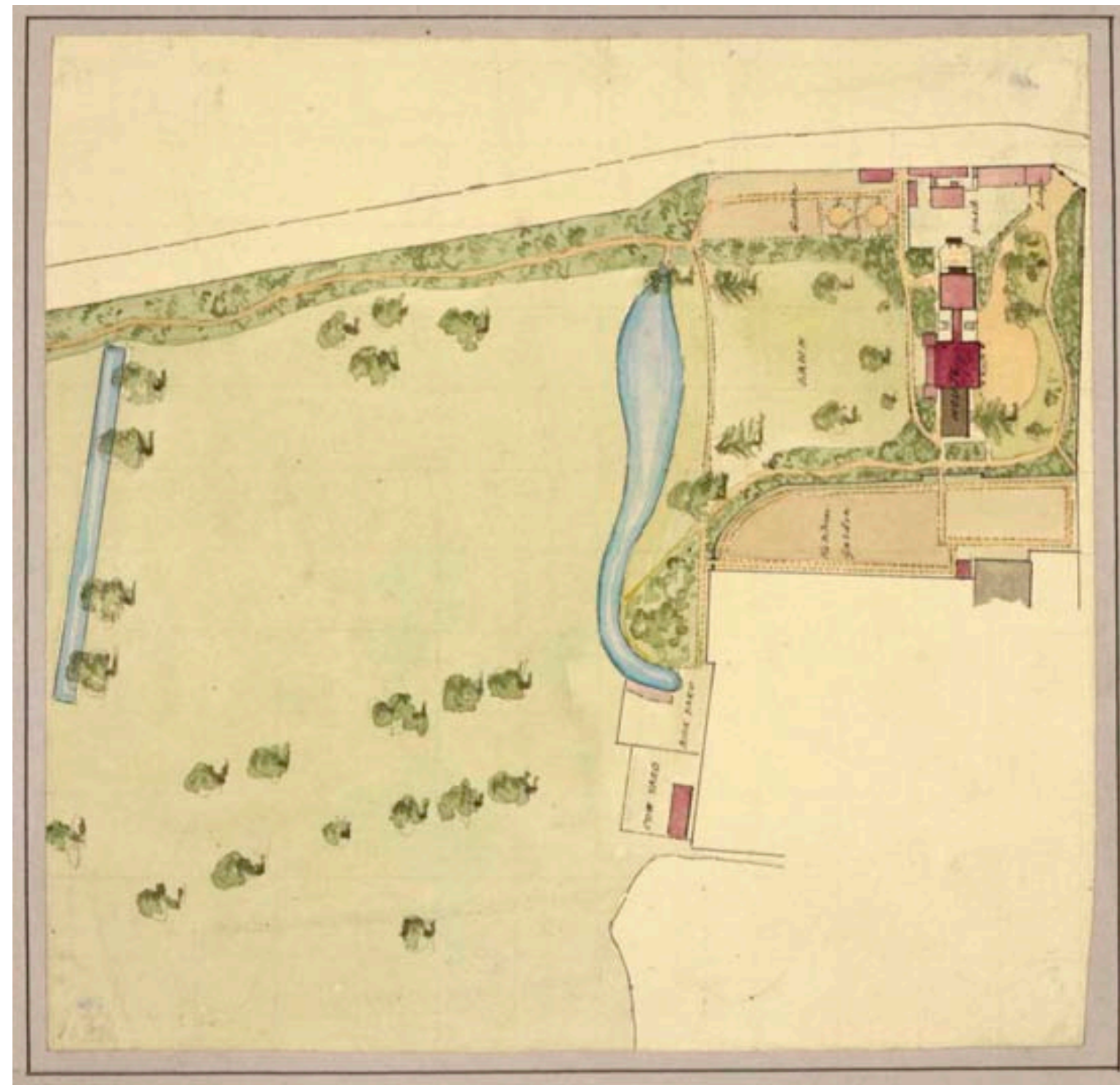
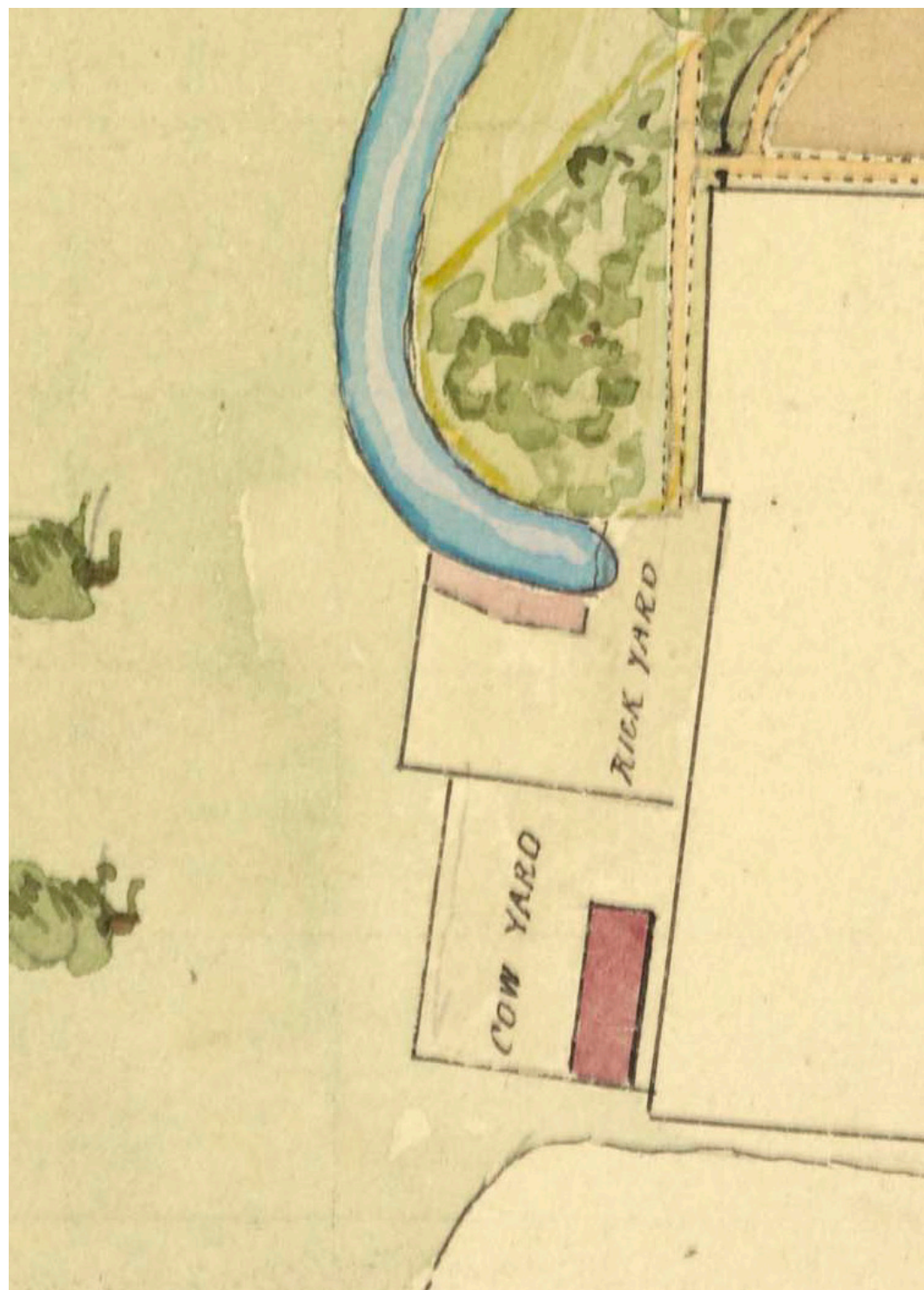


Existing buildings and yard





## Rick Yard historic plan





## Rick Yard existing photographs





## Rick Yard existing photographs

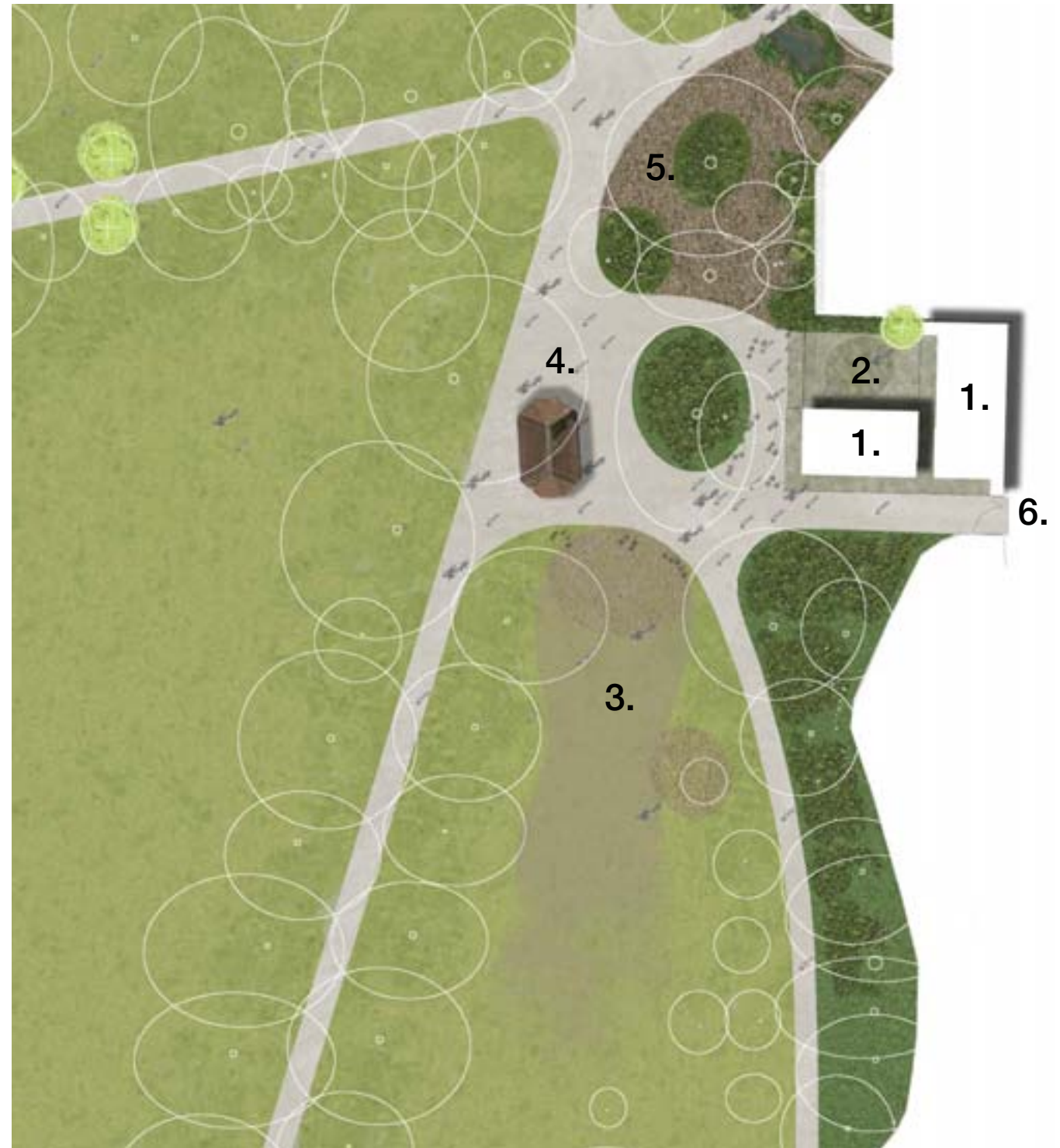




## Rick Yard landscape context plan

### Landscape proposals

1. New buildings
2. Yard
3. Relocated playground
4. Existing shelter
5. Woodland natural play
6. Post Office Lane entrance





## Rick Yard plan

1. Park entrance gates
2. Office
3. Staff and volunteer space
4. Classroom / activity space
5. Storage wall
6. Furniture store
7. Materials store
8. WCs
9. Disabled WC and baby change
10. Park's mess room
11. Staff WC
12. Public WCs
13. Tool store
14. Tool store
15. Kiosk
16. Boot wash
17. Kiosk seating
18. Outdoor courtyard
19. Fire pit and seating





## Rick Yard classroom / courtyard activities



Insect hotels



Big Arts activities



Potting up



## Rick Yard classroom / courtyard activities



Story-telling



Young people's groups



Outdoor games



## Rick Yard south elevation





## Rick Yard west elevation





## Rick Yard exterior



Glazed wall



Timber cladding



Green roof



## Rick Yard interior



Polished concrete floor



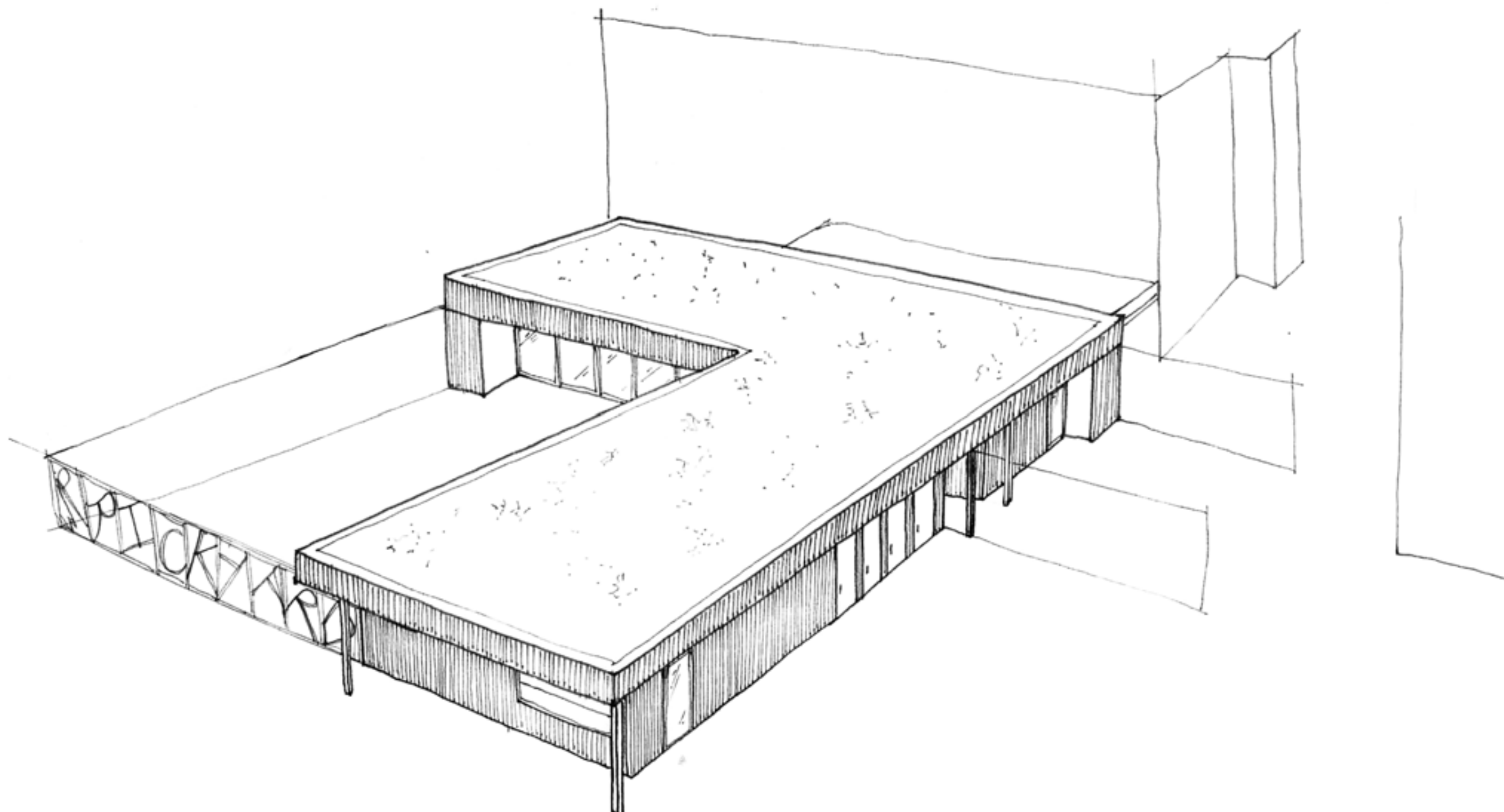
Timber shelving / storage



Activity space



## Rick Yard gate studies

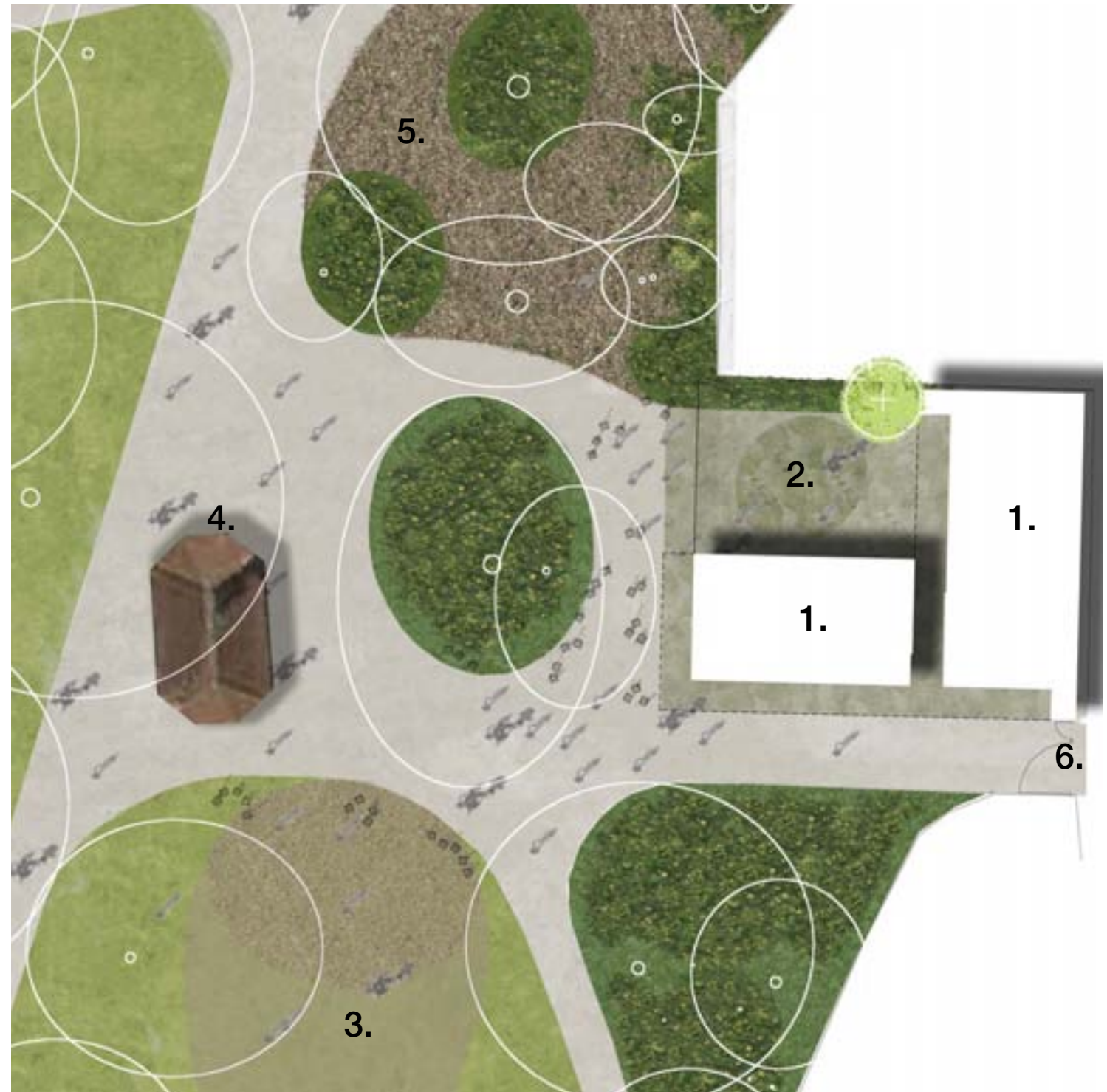




## Rick Yard landscape detail plan

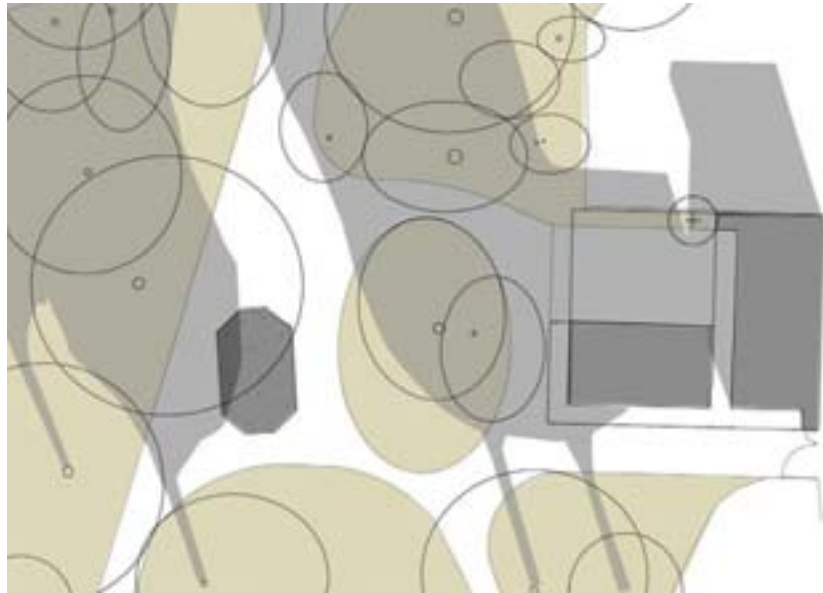
### Landscape proposals

1. New buildings
2. Yard
3. Relocated playground
4. Existing shelter
5. Woodland natural play
6. Post Office Lane entrance

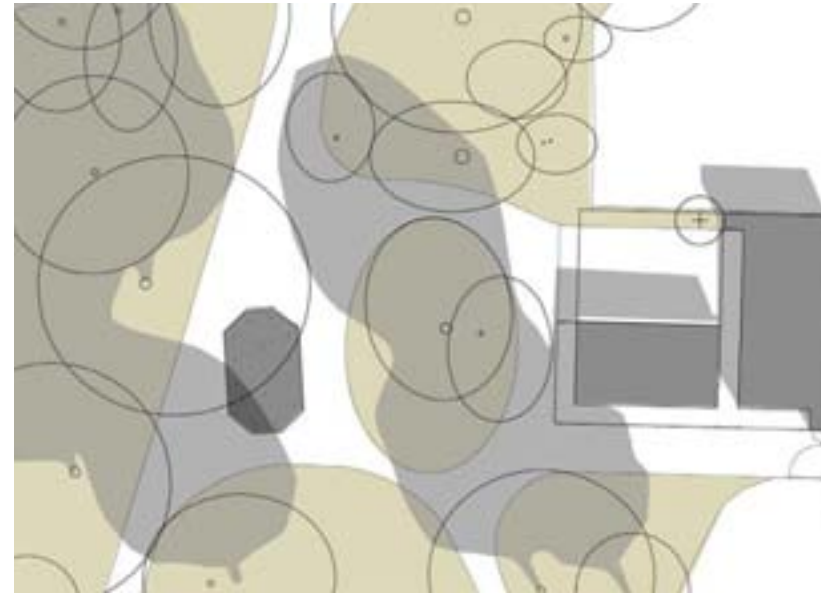




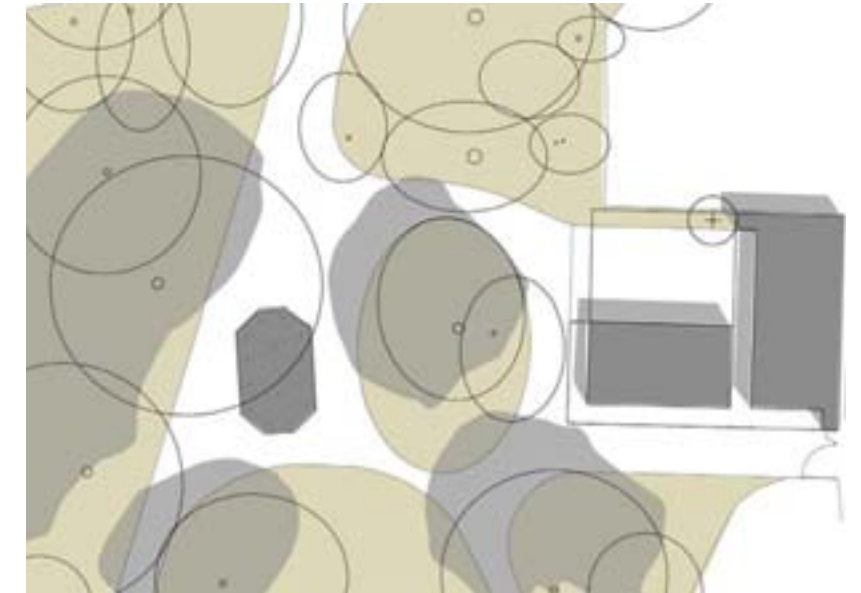
## Rick Yard sun path study



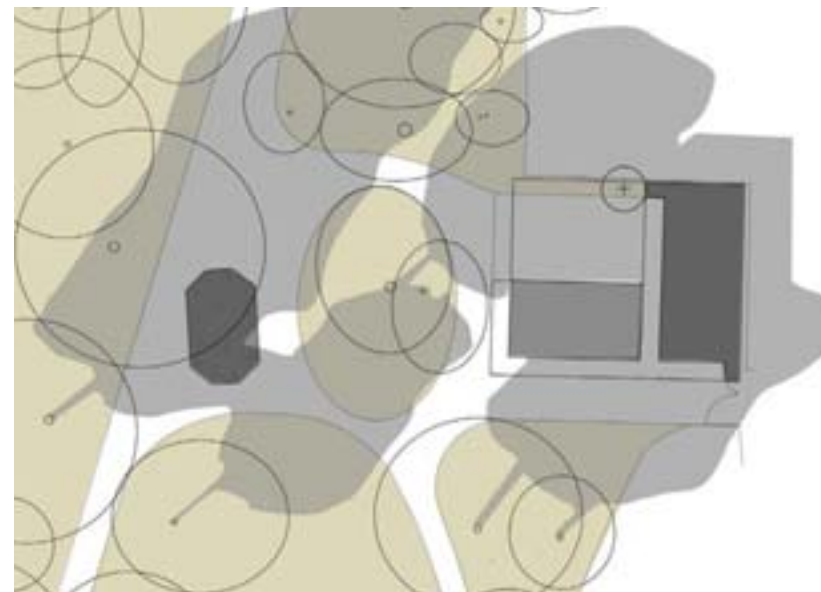
11am  
21st December



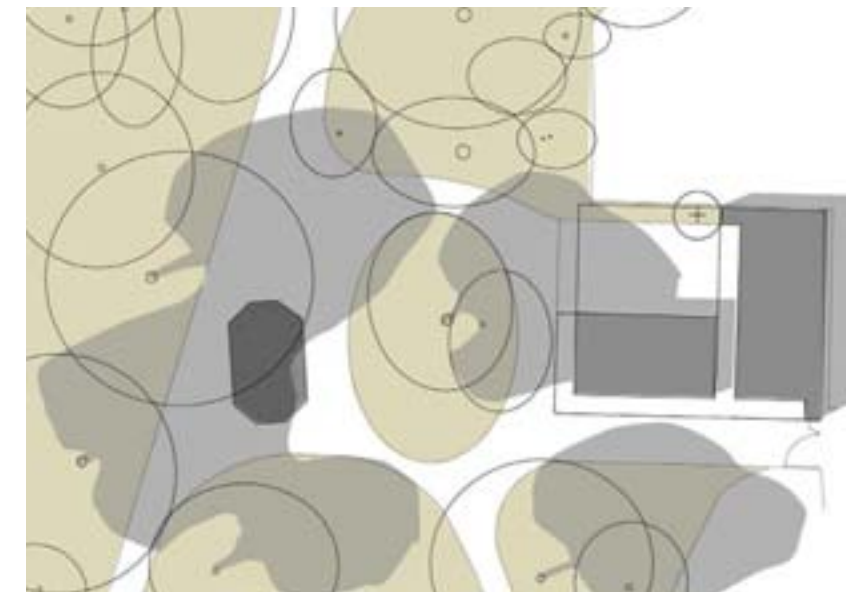
11am  
21st March / September



11am  
21st June



3pm  
21st March / September



3pm  
21st June



Rick Yard landscape section



Parkland                      Shelter                      Path                      Rick Yard                      Post Office Lane





Rick Yard landscape section



Parkland

Path

Rick Yard

Post  
Office  
Lane





Rick Yard landscape section



Woodland play    Woodland planting    Path    Relocated playground    Parkland





## Rick Yard landscape references - Soft surfaces and planting



Woodland understorey planting



Green wall



Green wall climbers



## Rick Yard landscape references - Hard surfaces woodland



Woodland play path



Mixed surfaces



Timber surface



## Rick Yard landscape references - Furniture



Timber log seat



Loose informal outdoor seating



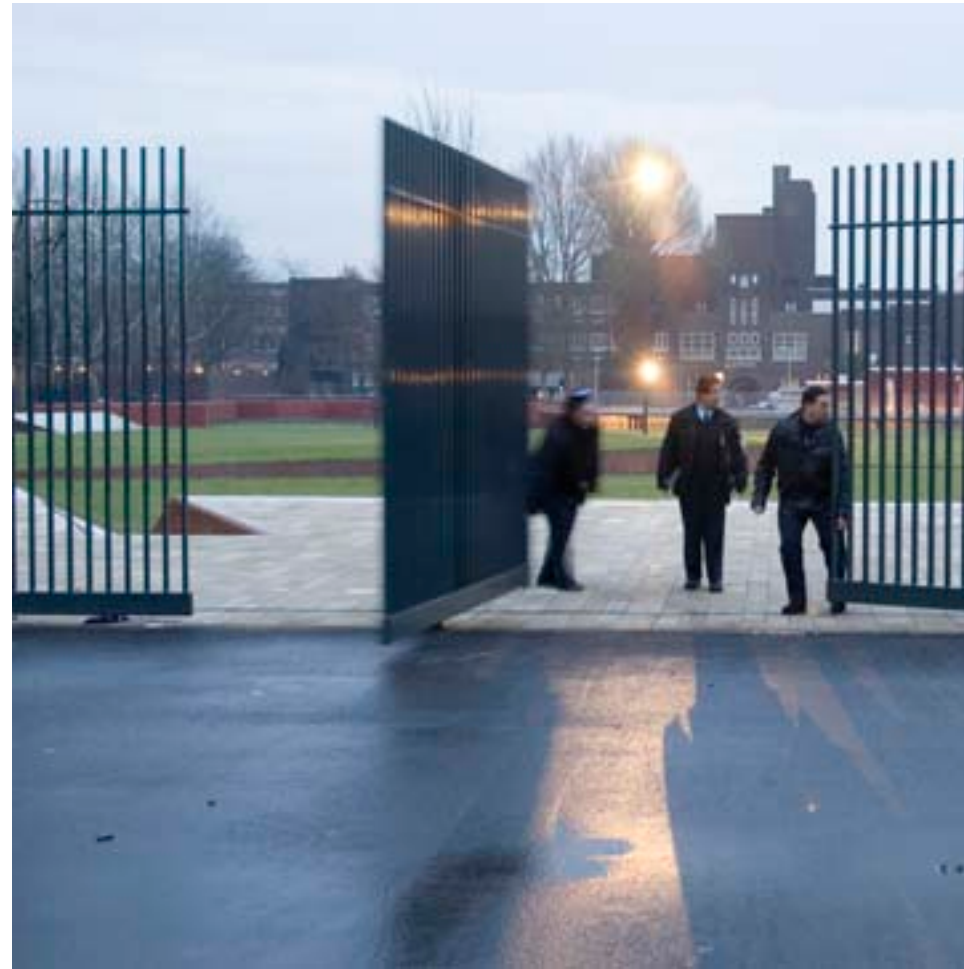
Fixed stone seating



## Rick Yard landscape references - Courtyard



Potting in the yard



Yard boundary fence and gates



Yard boundary



# Pitzhanger Manor and Walpole Park

keep in touch with:

**Walpole Friends**

<http://www.walpolefriends.org/>

or

**Ealing Council**

[www.ealing.gov.uk/pmgwalpole](http://www.ealing.gov.uk/pmgwalpole)

